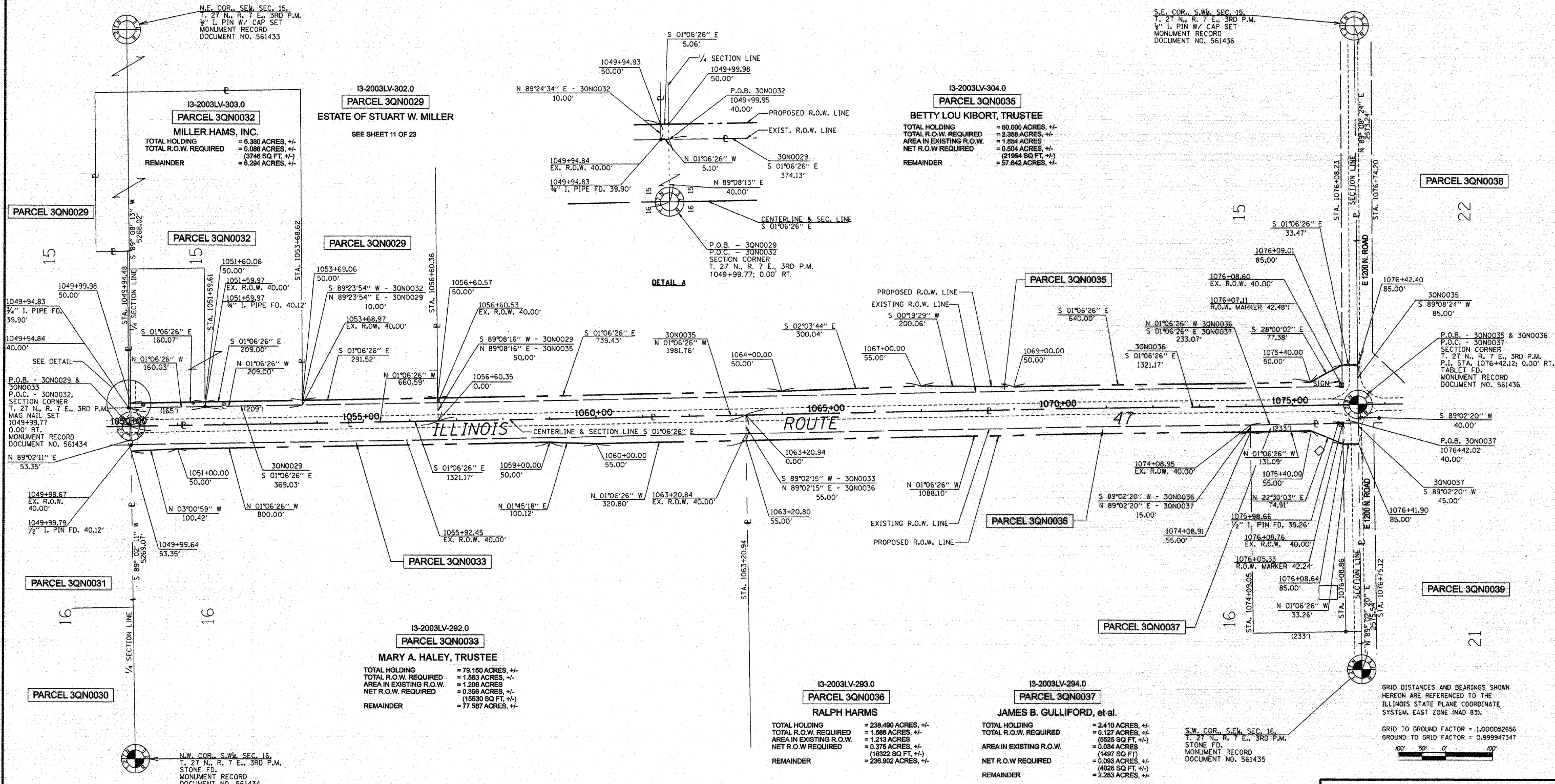


S.W. 1/4, SEC. 15, T. 27 N., R. 7 E., 3RD P.M.



N.E. COR., S.W. SEC. 15,
T. 27 N., R. 7 E., 3RD P.M.
1/4" I. PIN W/ CAP SET
MONUMENT RECORD
DOCUMENT NO. 561433

S.E. COR., S.W. SEC. 15,
T. 27 N., R. 7 E., 3RD P.M.
1/4" I. PIN W/ CAP SET
MONUMENT RECORD
DOCUMENT NO. 561436

13-2003LV-303.0
PARCEL 3QN0032
MILLER HAMS, INC.
TOTAL HOLDING = 6.380 ACRES, +/-
TOTAL R.O.W. REQUIRED = 0.086 ACRES, +/-
(3746 SQ FT, +/-)
REMAINDER = 6.294 ACRES, +/-

13-2003LV-302.0
PARCEL 3QN0029
ESTATE OF STUART W. MILLER
SEE SHEET 11 OF 23

13-2003LV-304.0
PARCEL 3QN0035
BETTY LOU KIBORT, TRUSTEE
TOTAL HOLDING = 80.008 ACRES, +/-
TOTAL R.O.W. REQUIRED = 2.386 ACRES, +/-
AREA IN EXISTING R.O.W. = 1.864 ACRES
NET R.O.W. REQUIRED = 0.504 ACRES, +/-
(21954 SQ FT, +/-)
REMAINDER = 57.842 ACRES, +/-

13-2003LV-292.0
PARCEL 3QN0033
MARY A. HALEY, TRUSTEE
TOTAL HOLDING = 79.150 ACRES, +/-
TOTAL R.O.W. REQUIRED = 1.563 ACRES, +/-
AREA IN EXISTING R.O.W. = 1.208 ACRES
NET R.O.W. REQUIRED = 0.355 ACRES, +/-
(15530 SQ FT, +/-)
REMAINDER = 77.587 ACRES, +/-

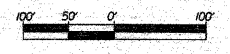
13-2003LV-293.0
PARCEL 3QN0036
RALPH HARMS
TOTAL HOLDING = 238.490 ACRES, +/-
TOTAL R.O.W. REQUIRED = 1.588 ACRES, +/-
AREA IN EXISTING R.O.W. = 1.213 ACRES
NET R.O.W. REQUIRED = 0.375 ACRES, +/-
(16322 SQ FT, +/-)
REMAINDER = 236.902 ACRES, +/-

13-2003LV-294.0
PARCEL 3QN0037
JAMES B. GULLIFORD, et al.
TOTAL HOLDING = 2.410 ACRES, +/-
TOTAL R.O.W. REQUIRED = 0.127 ACRES, +/-
(5525 SQ FT, +/-)
AREA IN EXISTING R.O.W. = 0.034 ACRES
(1497 SQ FT)
NET R.O.W. REQUIRED = 0.093 ACRES, +/-
(4028 SQ FT, +/-)
REMAINDER = 2.283 ACRES, +/-

S.W. COR., S.W. SEC. 16,
T. 27 N., R. 7 E., 3RD P.M.
STONE FD.
MONUMENT RECORD
DOCUMENT NO. 561435

GRID DISTANCES AND BEARINGS SHOWN
HEREON ARE REFERENCED TO THE
ILLINOIS STATE PLANE COORDINATE
SYSTEM, EAST ZONE (NAD 83).

GRID TO GROUND FACTOR = 1.000052656
GROUND TO GRID FACTOR = 0.999947347



I, MICHAEL E. RAPIER, HEREBY CERTIFY THAT I AM A LICENSED PROFESSIONAL LAND SURVEYOR OF THE STATE OF ILLINOIS, THAT THE SURVEY OF MAP 323 (IL ROUTE 47) WAS MADE BY MICHAEL E. RAPIER SURVEYING, INC. UNDER MY DIRECTION, AND THAT THIS PLAT IS A CORRECT REPRESENTATION OF SAID SURVEY TO THE BEST OF MY KNOWLEDGE AND BELIEF, THAT ALL MONUMENTS AND MARKS ARE OF THE CHARACTER AND OCCUPY THE POSITION SHOWN THEREON AND ARE SUFFICIENT TO ENABLE THE SURVEY TO BE RETRACED.



THIS PROFESSIONAL SERVICE CONFORMS TO THE CURRENT ILLINOIS MINIMUM STANDARDS FOR A BOUNDARY SURVEY
MICHAEL E. RAPIER
8-29-2006
ILLINOIS PROFESSIONAL LAND SURVEYOR NO. 2917
EXPIRES NOV. 30, 2006

S.E. 1/4, SEC. 16, T. 27 N., R. 7 E., 3RD P.M.

RIGHT OF WAY PLANS

ROUTE: F.A.P. 326 (IL ROUTE 47)
SECTION: (123,123X)RS-3, (124)RS-5 & (123)BR-3
PROJECT:
COUNTY: LIVINGSTON
JOB NO.: R-93-003-01
STA. 1049+99.77 TO STA. 1076+42.12
SCALE 1" = 100'

SHEET NO. 12 OF 23