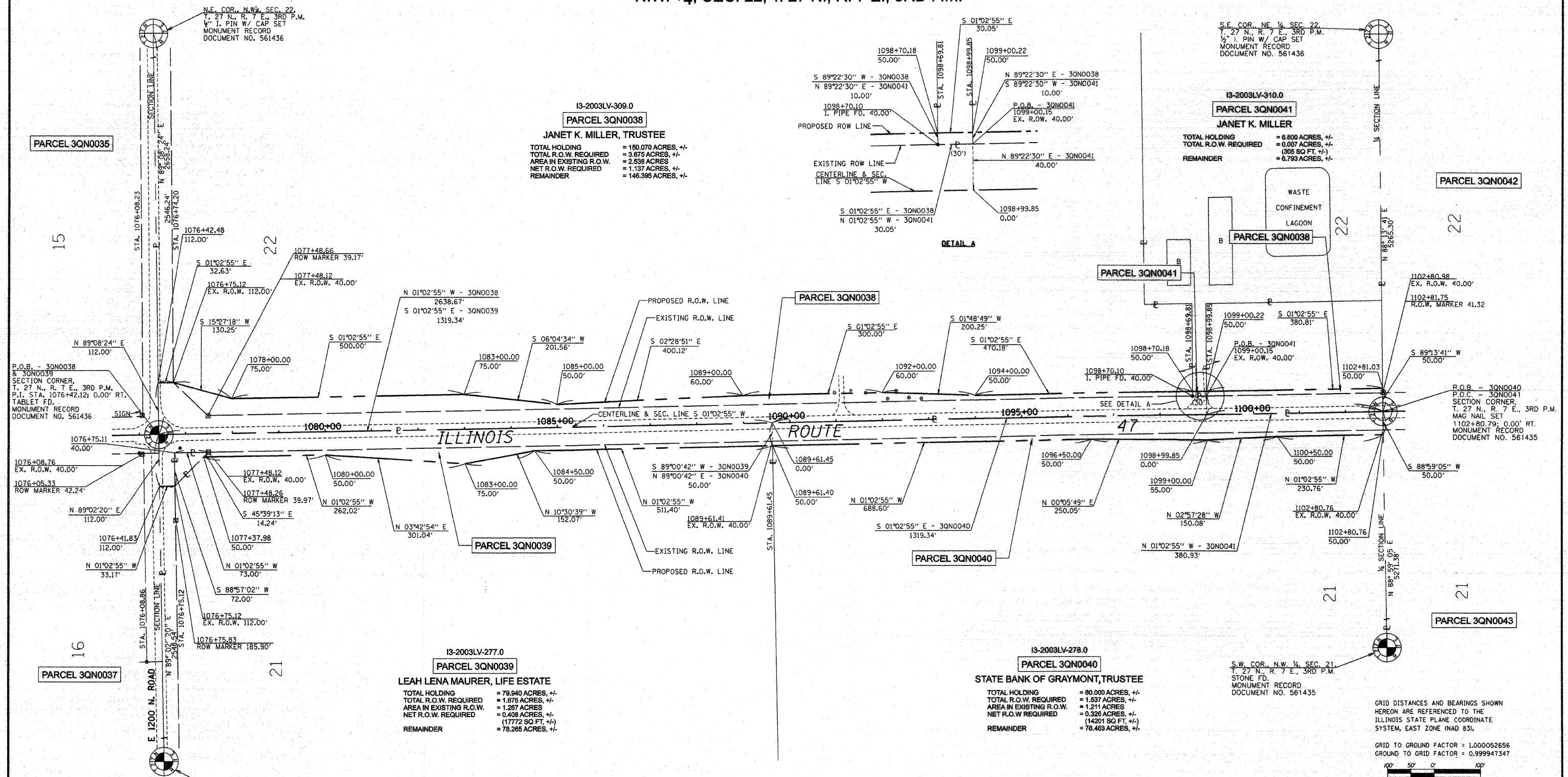


N.W. 1/4, SEC. 22, T. 27 N., R. 7 E., 3RD P.M.



13-2003LV-309.0
PARCEL 3QN0038
JANET K. MILLER, TRUSTEE
 TOTAL HOLDING = 150.070 ACRES, +/-
 TOTAL R.O.W. REQUIRED = 3.675 ACRES, +/-
 AREA IN EXISTING R.O.W. = 2.538 ACRES
 NET R.O.W. REQUIRED = 1.137 ACRES, +/-
 REMAINDER = 146.395 ACRES, +/-

13-2003LV-310.0
PARCEL 3QN0041
JANET K. MILLER
 TOTAL HOLDING = 8.800 ACRES, +/-
 TOTAL R.O.W. REQUIRED = 0.007 ACRES, +/-
 REMAINDER = 8.793 ACRES, +/-

13-2003LV-277.0
PARCEL 3QN0039
LEAH LENA MAURER, LIFE ESTATE
 TOTAL HOLDING = 79.940 ACRES, +/-
 TOTAL R.O.W. REQUIRED = 1.875 ACRES, +/-
 AREA IN EXISTING R.O.W. = 1.287 ACRES
 NET R.O.W. REQUIRED = 0.408 ACRES, +/-
 (17772 SQ FT, +/-)
 REMAINDER = 78.265 ACRES, +/-

13-2003LV-278.0
PARCEL 3QN0040
STATE BANK OF GRAYMONT, TRUSTEE
 TOTAL HOLDING = 80.000 ACRES, +/-
 TOTAL R.O.W. REQUIRED = 1.537 ACRES, +/-
 AREA IN EXISTING R.O.W. = 1.211 ACRES
 NET R.O.W. REQUIRED = 0.326 ACRES, +/-
 (14201 SQ FT, +/-)
 REMAINDER = 78.463 ACRES, +/-

S.W. COR., N.W. 1/4 SEC. 21,
 T. 27 N., R. 7 E., 3RD P.M.
 STONE FD.
 MONUMENT RECORD
 DOCUMENT NO. 561435

GRID DISTANCES AND BEARINGS SHOWN
 HEREON ARE REFERENCED TO THE
 ILLINOIS STATE PLANE COORDINATE
 SYSTEM, EAST ZONE (NAD 83).

GRID TO GROUND FACTOR = 1.000052656
 GROUND TO GRID FACTOR = 0.999947347

RIGHT OF WAY PLANS

ROUTE: F.A.P. 326 (IL ROUTE 47)
 SECTION: (123,123)RS-3, (124)RS-5 & (123)BR-3
 PROJECT:
 COUNTY: LIVINGSTON
 JOB NO.: R-93-003-01
 STA. 1076+42.12 TO STA. 1102+80.79
 SCALE 1" = 100'

SHEET NO. 13 OF 23

I, MICHAEL E. RAPIER, HEREBY CERTIFY THAT I AM A LICENSED PROFESSIONAL LAND SURVEYOR OF THE STATE OF ILLINOIS, THAT THE SURVEY OF FAP 326 (IL ROUTE 47) WAS MADE BY MICHAEL E. RAPIER SURVEYING, INC. UNDER MY DIRECTION, AND THAT THIS PLAT IS A CORRECT REPRESENTATION OF SAID SURVEY TO THE BEST OF MY KNOWLEDGE AND BELIEF, THAT ALL MONUMENTS AND MARKS ARE OF THE CHARACTER AND OCCUPY THE POSITION SHOWN THEREON AND ARE SUFFICIENT TO ENABLE THE SURVEY TO BE RETRACED.

THIS PROFESSIONAL SERVICE CONFORMS TO THE CURRENT ILLINOIS MINIMUM STANDARDS FOR A BOUNDARY SURVEY
 8-29-2006
 ILLINOIS PROFESSIONAL LAND SURVEYOR NO. 2917
 EXPIRES: NOV. 30, 2008



N.E. 1/4, SEC. 21, T. 27 N., R. 7 E., 3RD P.M.