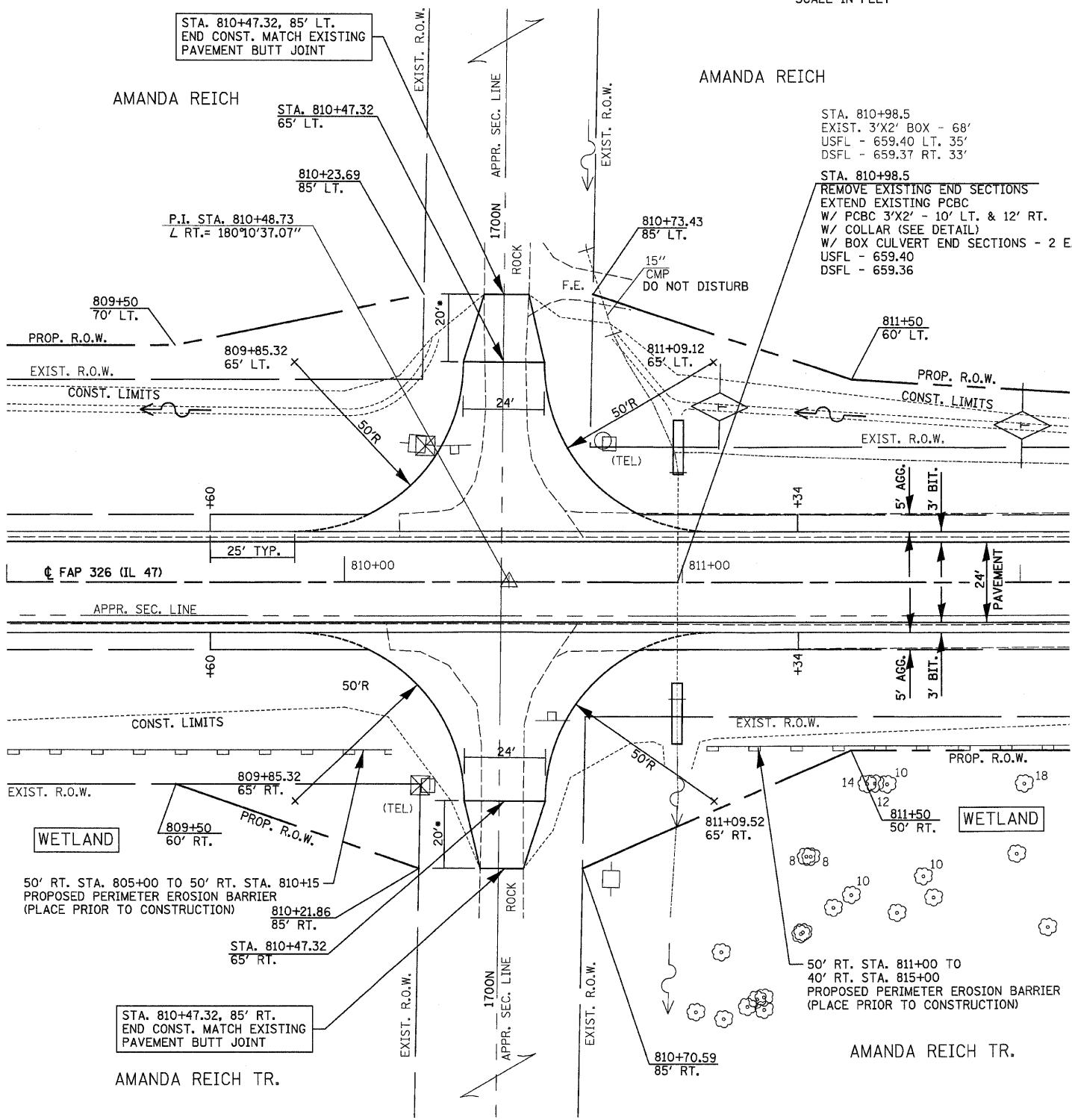
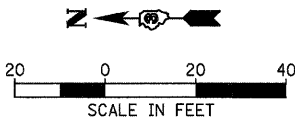


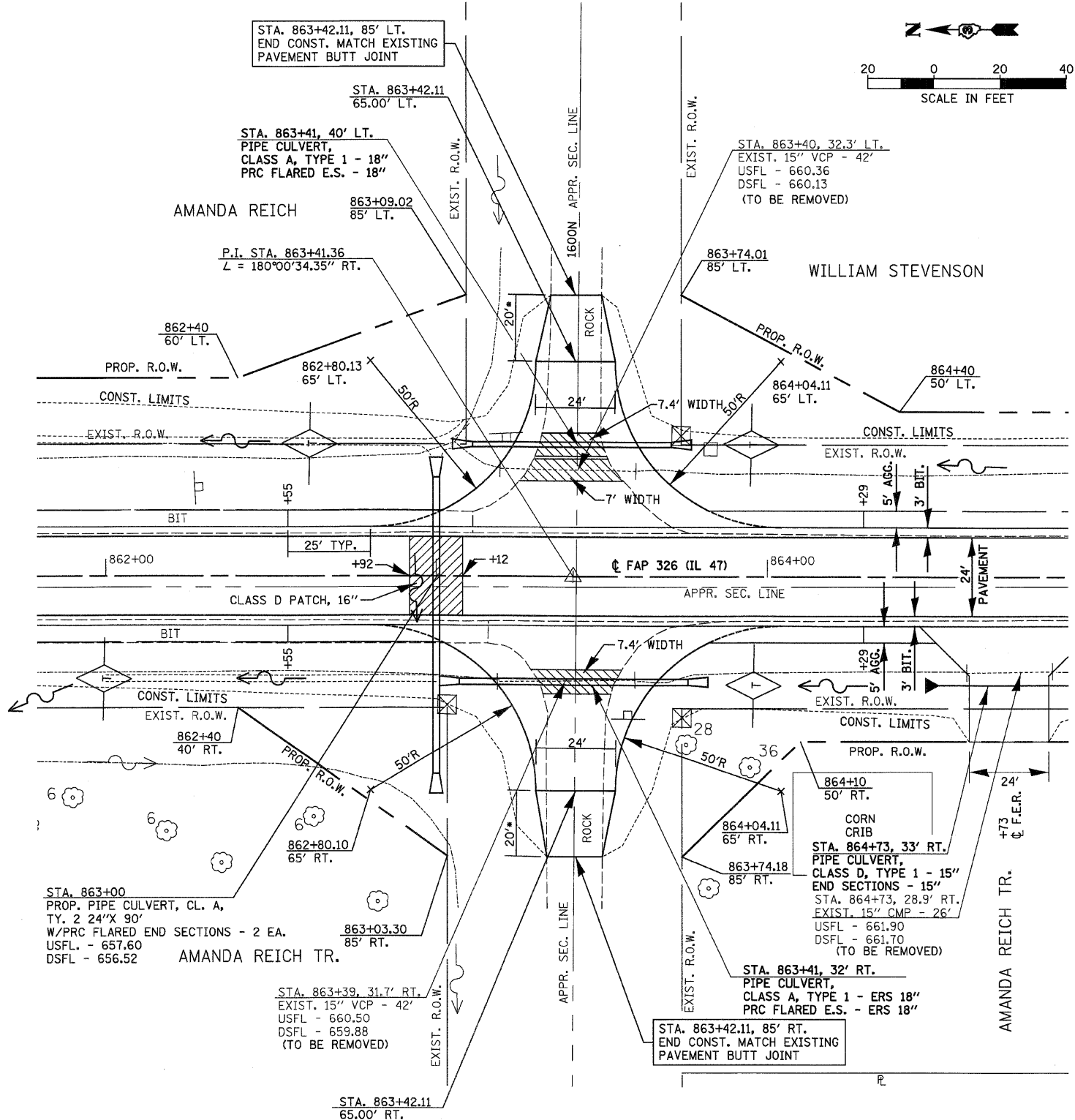
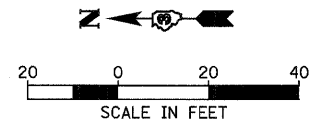
F.A.P. RTE.	SECTION	COUNTY	TOTAL SHEETS	SHEET NO.
326	*	LIVINGSTON	354	118
STA. TO STA.				
FED. ROAD DIST. NO. ILLINOIS FED. AID PROJECT				
*(123,123)RS-3,(124)RS-5,(123)BR-3				



STA. 810+47.32  
FAP RTE. 326 (IL. RTE. 47) &  
1700 N ROAD  
INTERSECTION DETAILS

• SEE SIDEROAD DETAILS

- CLASS D PATCHES, 6 INCH OR AGGREGATE BASE CSE., TY. A 8" (SEE SIDEROAD DETAIL)
- CLASS D PATCHES, 16 INCH



STA. 863+42.11  
FAP RTE. 326 (IL. RTE. 47) &  
1600 N ROAD  
INTERSECTION DETAILS

REVISIONS	
NAME	DATE

ILLINOIS DEPARTMENT OF TRANSPORTATION  
**INTERSECTION DETAILS**  
FAP 326 (IL RTE. 47) &  
1700 N & 1600 N

SCALE: VERT. \_\_\_\_\_  
HORIZ. \_\_\_\_\_  
DATE \_\_\_\_\_ DRAWN BY \_\_\_\_\_  
CHECKED BY \_\_\_\_\_