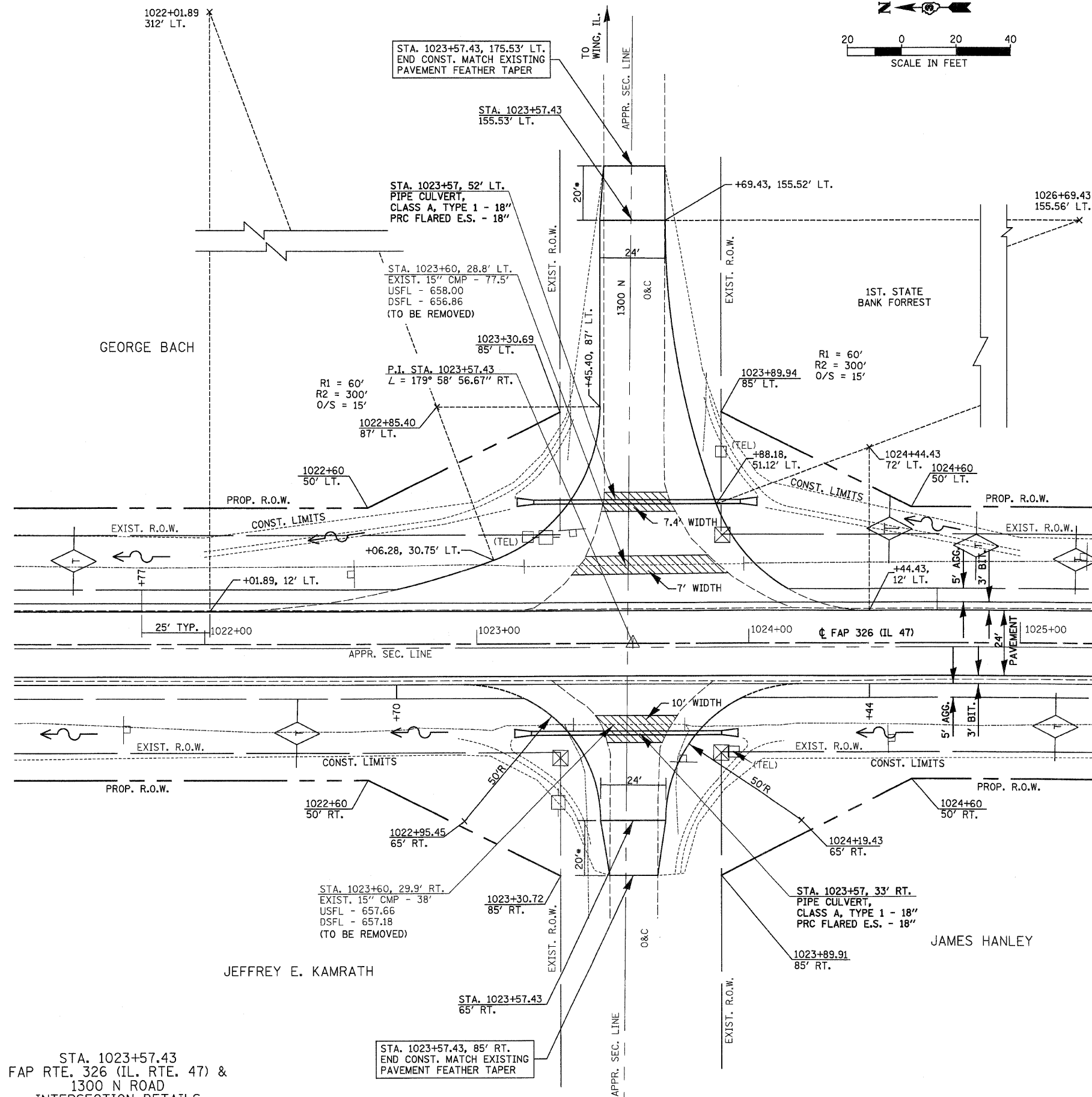
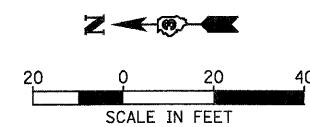


F.A.P. RTE.	SECTION	COUNTY	TOTAL SHEETS	SHEET NO.
326		LIVINGSTON	354	120
STA. TO STA.		FED. AID PROJECT		
		*(123,123)RS-3,(124)RS-5,(123)BR-3		

CLASS D PATCHES, 6 INCH OR AGGREGATE BASE CSE., TY. A 8" (SEE SIDEROAD DETAIL)



STA. 1023+57.43
FAP RTE. 326 (IL. RTE. 47) &
1300 N ROAD
INTERSECTION DETAILS

STA. 1023+57.43, 85' RT.
END CONST. MATCH EXISTING
PAVEMENT FEATHER TAPER

REVISIONS	
NAME	DATE

ILLINOIS DEPARTMENT OF TRANSPORTATION

INTERSECTION DETAILS
FAP 326 (IL RTE. 47) & 1300 N

SCALE: VERT. _____
HORIZ. _____
DATE _____
DRAWN BY _____
CHECKED BY _____

* SEE SIDEROAD DETAILS