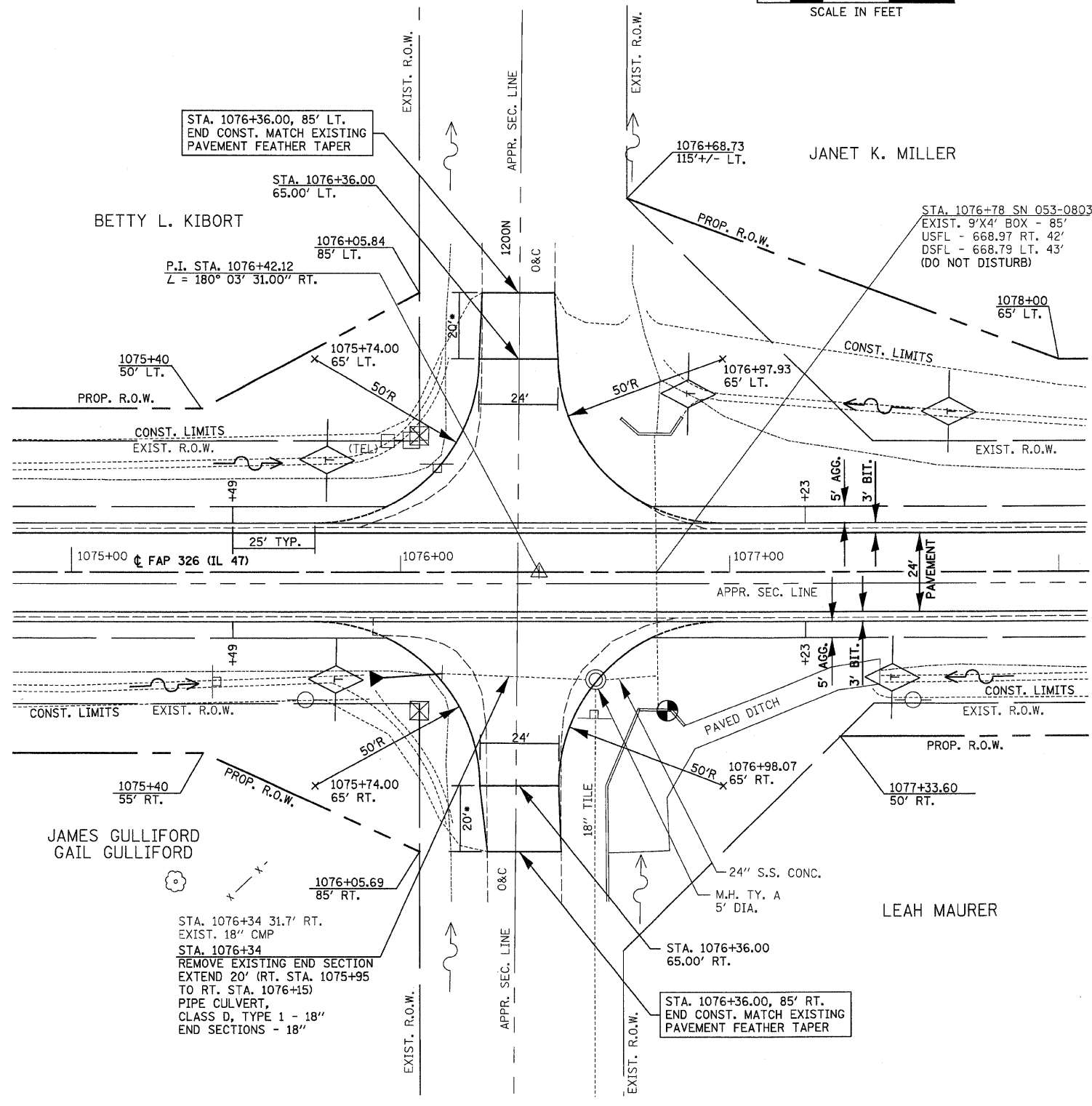
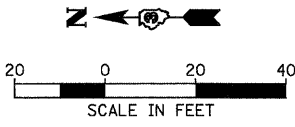


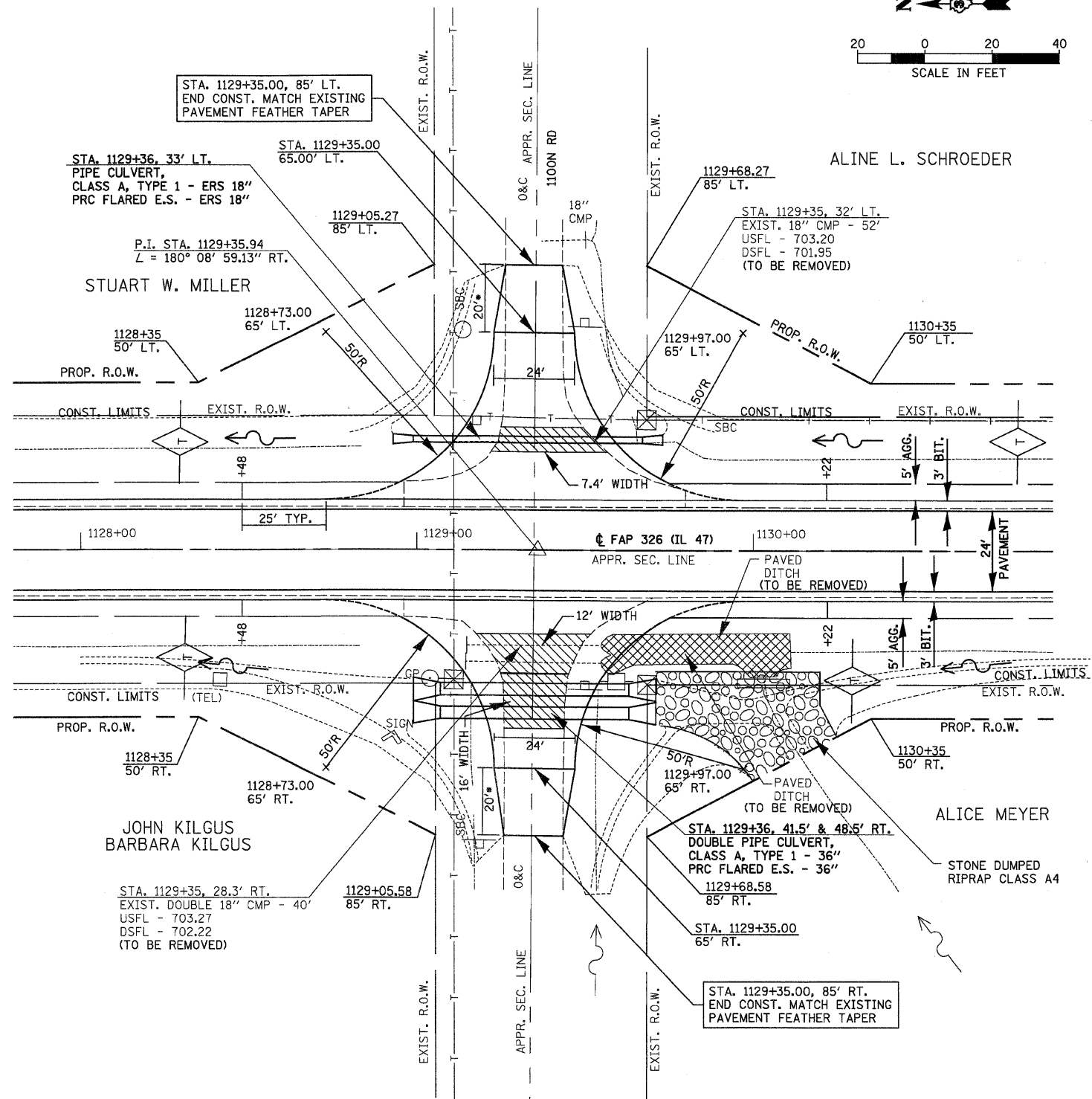
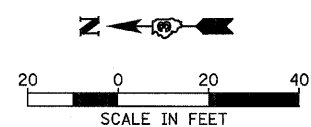
F.A.P. RTE.	SECTION	COUNTY	TOTAL SHEETS	SHEET NO.
326		LIVINGSTON	354	121
STA.		TO STA.		
FED. ROAD DIST. NO.		ILLINOIS FED. AID PROJECT		
		*(123)IRS-3,(124)RS-5,(123)BR-3		



STA. 1076+36.00
FAP RTE. 326 (IL. RTE. 47) &
1200 N ROAD
INTERSECTION DETAILS

* SEE SIDEROAD DETAILS

CLASS D PATCHES, 6 INCH OR
AGGREGATE BASE CSE., TY. A 8"
(SEE SIDEROAD DETAIL)



STA. 1129+35.00
FAP RTE. 326 (IL. RTE. 47) &
1100 N ROAD
INTERSECTION DETAILS

REVISIONS	
NAME	DATE

ILLINOIS DEPARTMENT OF TRANSPORTATION
INTERSECTION DETAILS
FAP 326 (IL RTE. 47) &
1200 N & 1100 N

SCALE: VERT. _____
HORIZ. _____
DATE _____ DRAWN BY _____
CHECKED BY _____