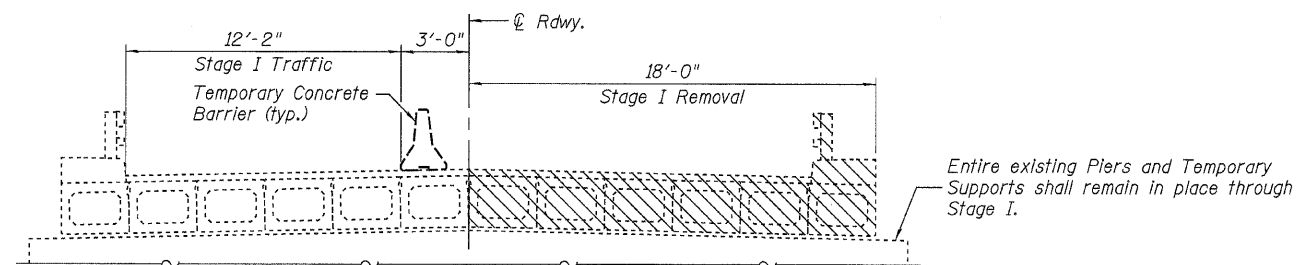


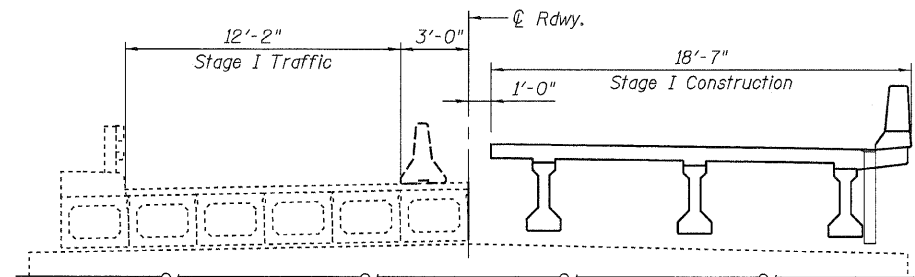
STATE OF ILLINOIS
DEPARTMENT OF TRANSPORTATION

SHEET 2
OF 18

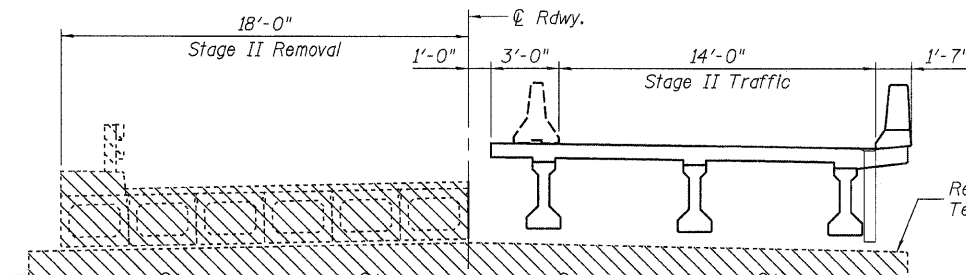
F.A.P. RTE.	SECTION	COUNTY	TOTAL SHEETS	SHEET NO.
326	(123)BR-3	LIVINGSTON	354	124
FED. ROAD DIST. NO.	ILLINOIS	FED. AID PROJECT	CONTRACT NO. 66601	



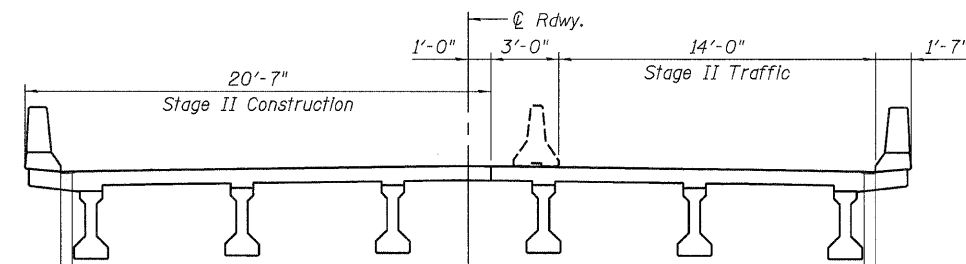
STAGE I REMOVAL
(Looking South)



STAGE I CONSTRUCTION
(Looking South)

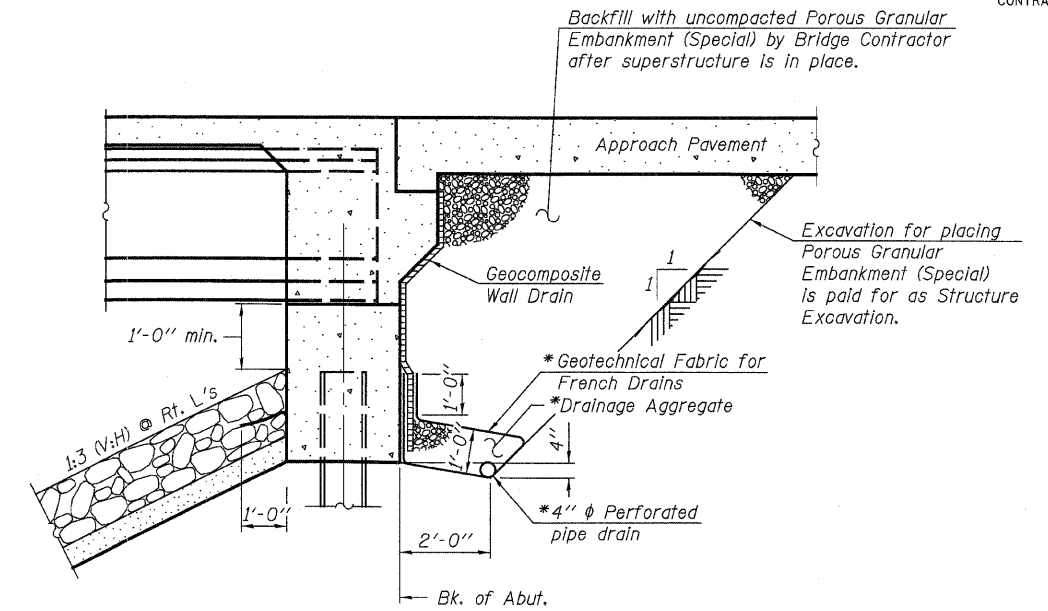


STAGE II REMOVAL
(Looking South)



STAGE II CONSTRUCTION
(Looking South)

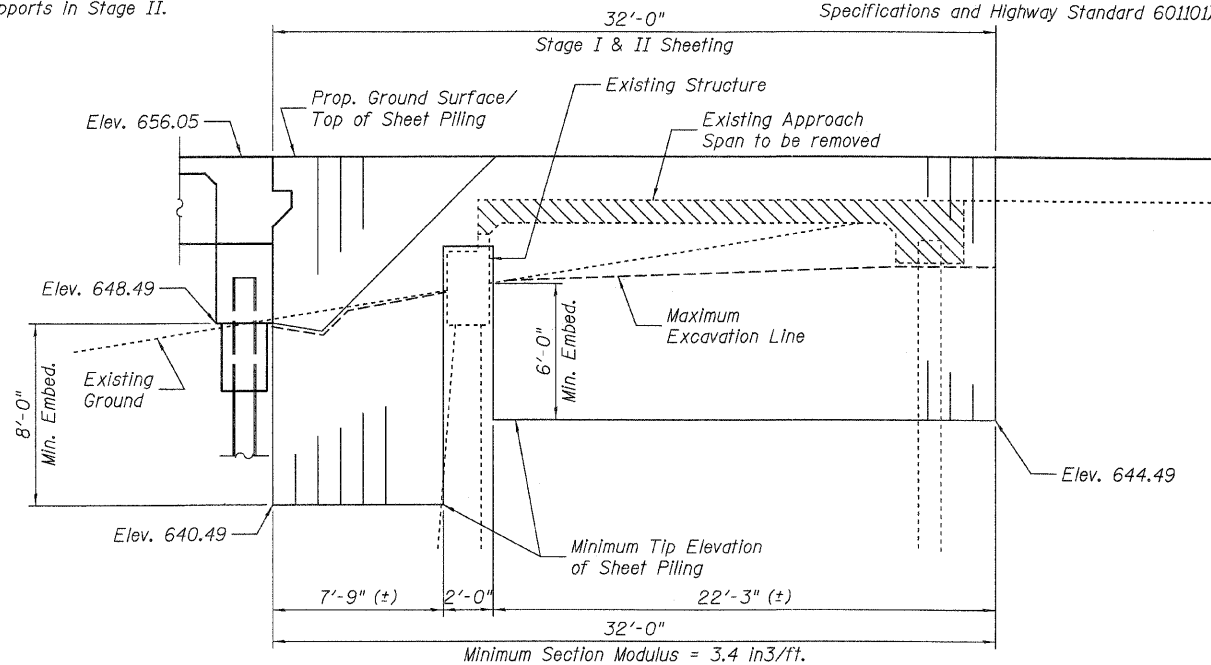
NOTES:
Hatched area indicates Removal of Existing Structures.
Removal of existing railing and wearing surface is included with Removal of Existing Structures.
For quantity and location of Temporary Concrete Barrier, see Roadway Plans.



SECTION THRU INTEGRAL ABUTMENT
(Horiz. dlm. @ Rt. L's)

* Included in the cost of Pipe Underdrains for Structures.

Note:
All drainage system components shall extend to 2'-0" from the end of each wingwall except an outlet pipe shall extend until intersecting with the side slopes. The pipes shall drain into concrete headwalls. (See Article 601.05 of the Standard Specifications and Highway Standard 60110D).



SOUTH ABUTMENT
(North Abutment similar)

TEMPORARY SHEET PILING DETAILS
(Slopes and horizontal dimensions are measured parallel to C.Rdwy.)

If the Contractor chooses to alter the temporary cantilevered sheet piling design requirements shown on plans, a design submittal including plan details and calculations will be required for review and acceptance by the Engineer.

STAGE CONSTRUCTION DETAILS
ILLINOIS 47 OVER
NORTH FORK VERMILION RIVER
FAP ROUTE 326 SECTION (123)BR-3
LIVINGSTON COUNTY
STATION 949+25.00
STRUCTURE NO. 053-0179

JD Johnson, Depp & Quisenberry
CONSULTING ENGINEERS
Springfield, Illinois

DESIGNED: CDB	DRAWN: P. Ray
CHECKED: DCD	CHECKED: CDB/DCD

FILE: J:\JDD\1036 IL47 Livingston PH2\VermillionRiver\02stagecons1r.dgn

USER: DCD

DATE: 11/29/2007 10:48:50