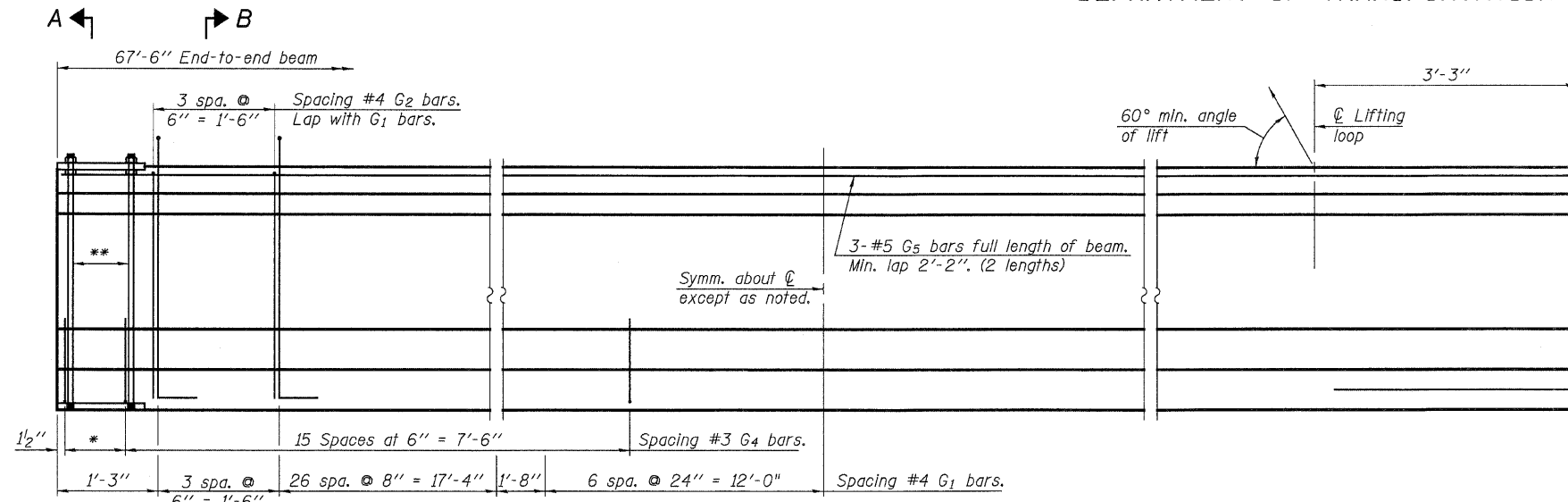


STATE OF ILLINOIS  
DEPARTMENT OF TRANSPORTATION

SHEET 10  
OF 18

F.A.P. RTE.	SECTION	COUNTY	TOTAL SHEETS	SHEET NO.
326	(123)BR-3	LIVINGSTON	354	132
FED. ROAD DIST. NO.	ILLINOIS	FED. AID PROJECT	CONTRACT NO. 66601	

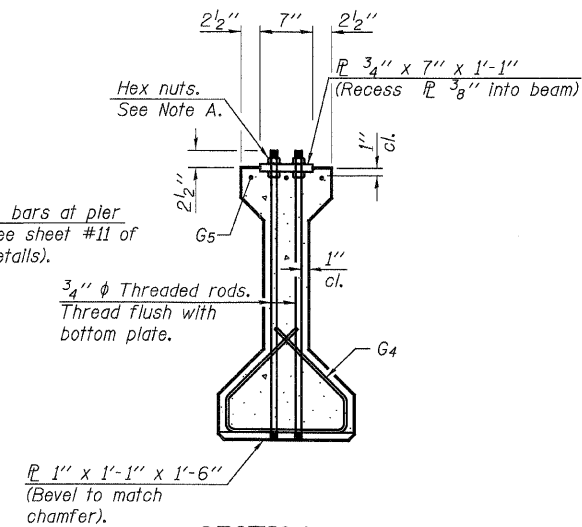


**ELEVATION OF BEAM**  
(Showing reinforcement & dimensions)

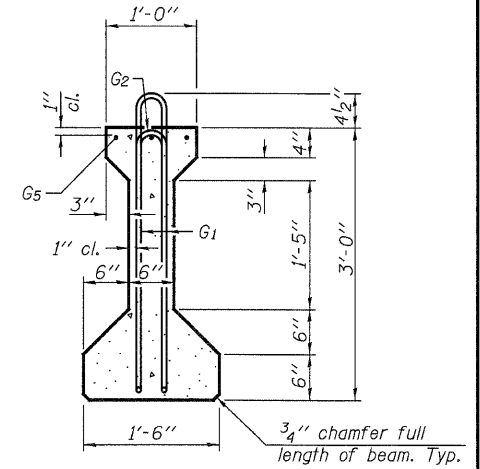
\* 5 spaces at 3" = 9".  
\*\* 4-3/4"  $\phi$  threaded dowel rods at 3" cts., each face.

Note A:  
Hex nuts (top and bottom) with lock washers (top). Only tighten sufficiently to compress lock washers.

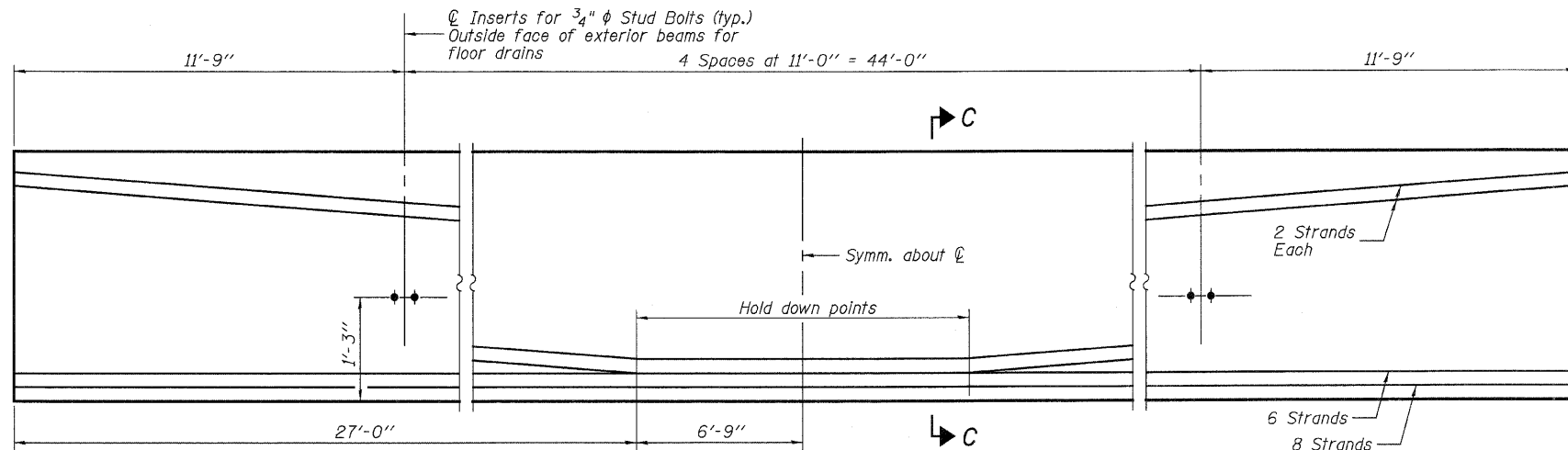
2-#8 G6 bars at pier only. (See sheet #11 of 18 for details).



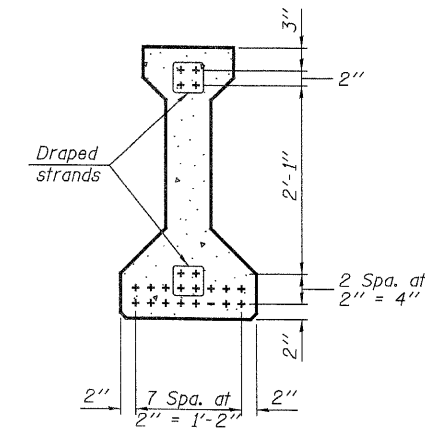
**SECTION A-A**



**SECTION B-B**



**ELEVATION OF BEAM**  
(Showing prestressing steel)



**SECTION C-C**

**\*\*\* BAR LIST  
ONE BEAM ONLY**

Bar	No.	Size	Length	Shape
G1	73	#4	7'-5"	∩L
G2	8	#4	5'-8"	∩
G4	38	#3	4'-1"	∩
G5	6	#5	34'-8"	—
G6	4	#8	3'-9"	U

\*\*\* For information only

Notes:  
See sheet #11 of 18 for additional details and Bill of Material.  
Required release strength,  $f'_{ci}$ , shall be 5,000 psi.

**36" PPC I-BEAM - SPAN 2**  
ILLINOIS 47 OVER  
NORTH FORK VERMILION RIVER  
FAP ROUTE 326 SECTION (123)BR-3  
LIVINGSTON COUNTY  
STATION 949+25.00  
STRUCTURE NO. 053-0179

**JD Johnson, Depp & Quisenberry**  
CONSULTING ENGINEERS  
Springfield, Illinois

DESIGNED: CDB	DRAWN: P. Ray
CHECKED: DCD	CHECKED: CDB/DCD

PI-4-36

7-15-05 (with 12-21-06 Revisions)

FILE: J:\JDD\101036 IL47 Livingston Pr2\1-VermilionRiver\0beam-2.dgn

USER: DCD

DATE: 11/29/2007 10:49:23