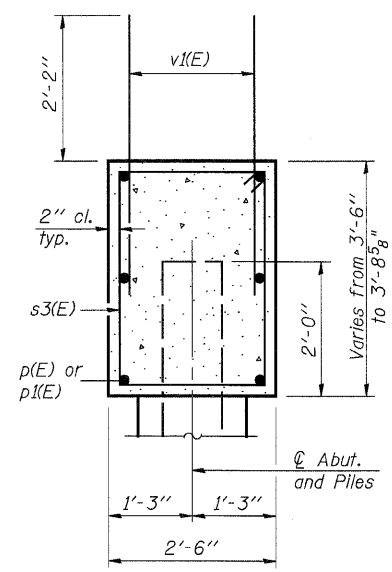
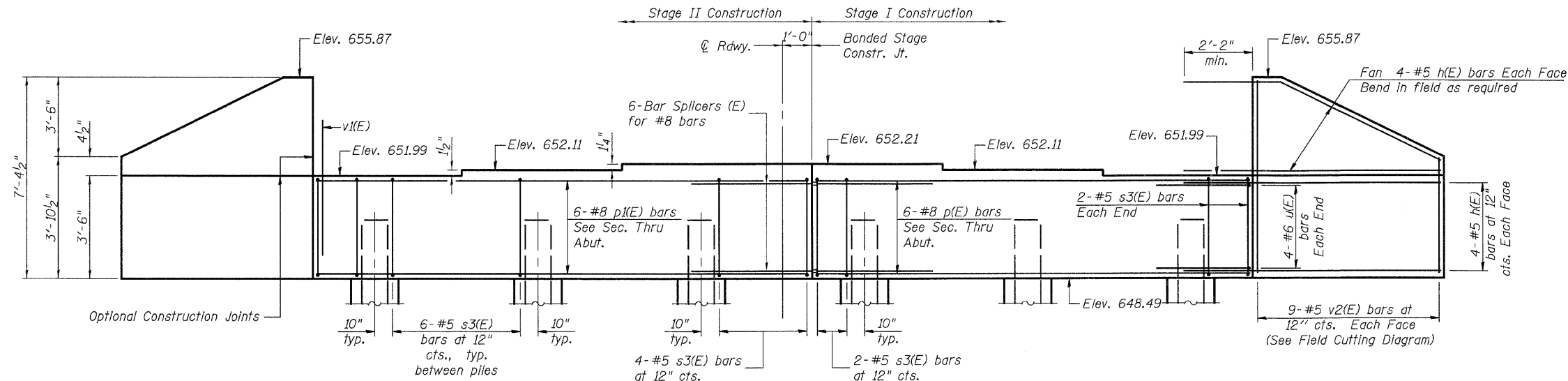


STATE OF ILLINOIS
DEPARTMENT OF TRANSPORTATION

SHEET 13
OF 18

F.A.P. RTE.	SECTION	COUNTY	TOTAL SHEETS	SHEET NO.
326	(123)BR-3	LIVINGSTON	354	135
FED. ROAD DIST. NO.	ILLINOIS	FED. AID PROJECT	CONTRACT NO. 66601	

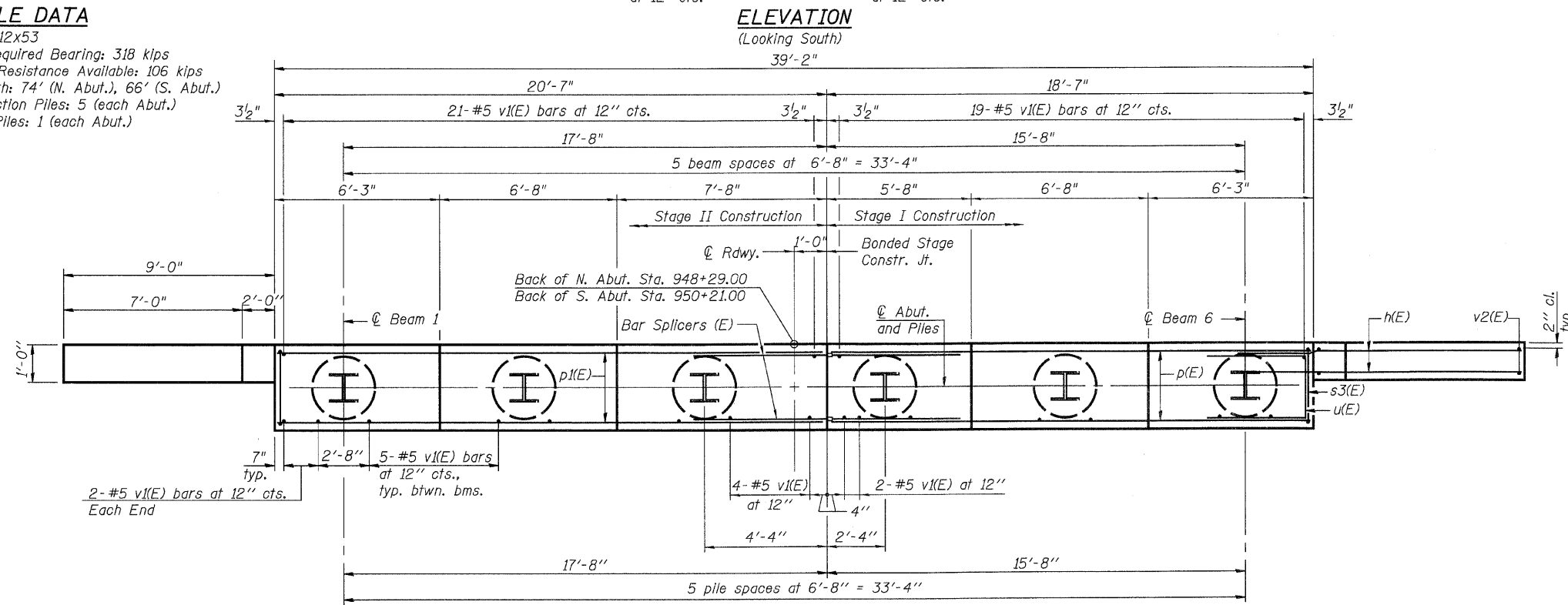
Notes: Four steps monolithically with cap.
Reinforcement bars designated (E)
shall be epoxy coated.



SEC. THRU ABUT.

PILE DATA

Type: HP 12x53
Nominal Required Bearing: 318 kips
Allowable Resistance Available: 106 kips
Est. Length: 74' (N. Abut.), 66' (S. Abut.)
No. Production Piles: 5 (each Abut.)
No. Test Piles: 1 (each Abut.)

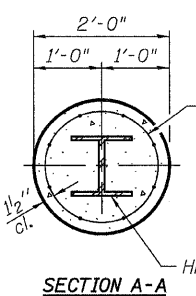


PLAN AT SOUTH ABUTMENT
(North Abutment Mirror Image)

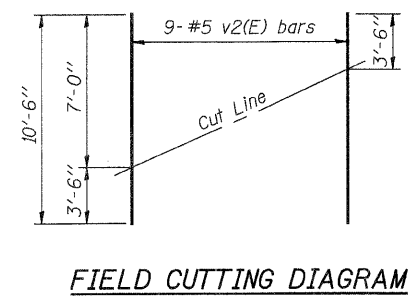
BILL OF MATERIAL

Bar	No.	Size	Length	Shape	
h(E)	32	#5	11'-0"	—	
p(E)	6	#8	18'-3"	—	
p(E)	6	#8	20'-3"	—	
s3(E)	34	#5	11'-8"	□	
u(E)	8	#6	7'-6"	□	
v(E)	70	#5	4'-4"	—	
v2(E)	18	#5	10'-6"	—	
Concrete Structures				Cu. Yd.	17.2
Reinforcement Bars, Epoxy Coated				Pound	2010
Structure Excavation				Cu. Yd.	13
Furnishing Steel Piles HP12x53				Foot	370 N. Abut. 330 S. Abut.
Driving Piles				Foot	370 N. Abut. 330 S. Abut.
Test Pile Steel HP12x53				Each	1 N. Abut. 1 S. Abut.

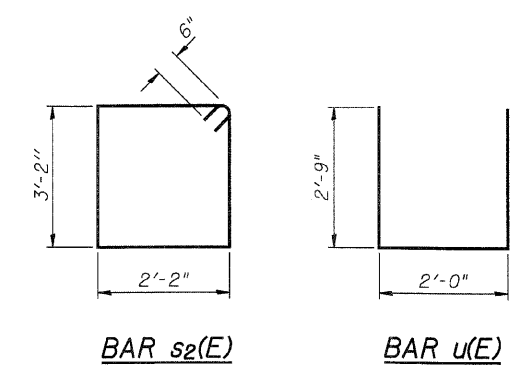
Bill of Material for 1 Abutment only, except as noted.



PILE ENCASEMENT DETAIL



FIELD CUTTING DIAGRAM
Order v2(E) full length. Cut as shown and use remainder of bars in opposite face.



BAR s2(E)

BAR u(E)

JD Johnson, Depp & Quisenberry
CONSULTING ENGINEERS
Springfield, Illinois

DESIGNED: CDB	DRAWN: P. Ray
CHECKED: DCD	CHECKED: CDB/DCD

AI-0 10-22-04

FILE: J:\DDA\10136_IL47_Livingston_P12\VermillionRiver\NAbutment.dgn USER: DCD DATE: 11/29/2007 10:49:33

NORTH AND SOUTH ABUTMENTS
ILLINOIS 47 OVER
NORTH FORK VERMILION RIVER
FAP ROUTE 326 SECTION (123)BR-3
LIVINGSTON COUNTY
STATION 949+25.00
STRUCTURE NO. 053-0179