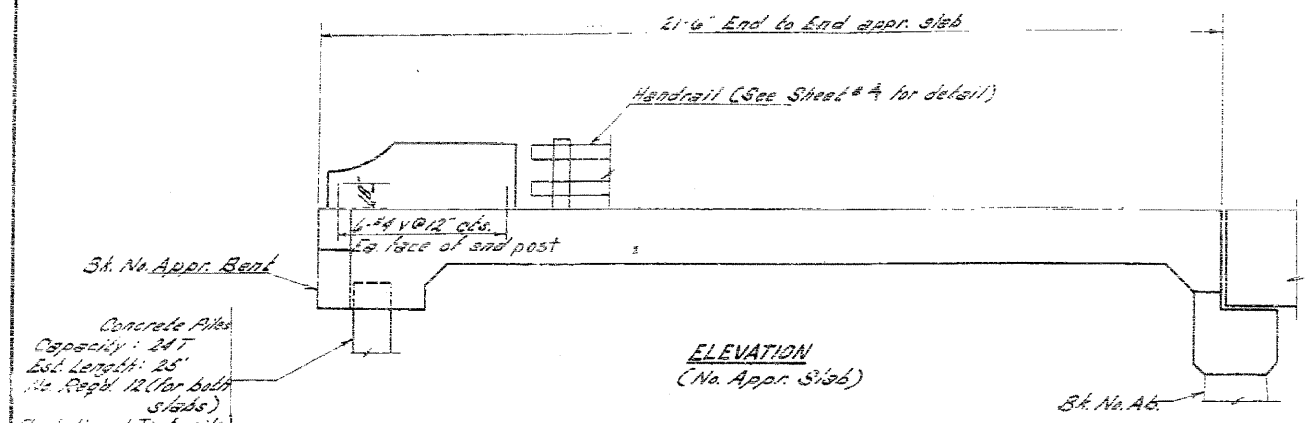


STATE OF ILLINOIS
 DEPARTMENT OF PUBLIC WORKS & BUILDINGS
 DIVISION OF HIGHWAYS

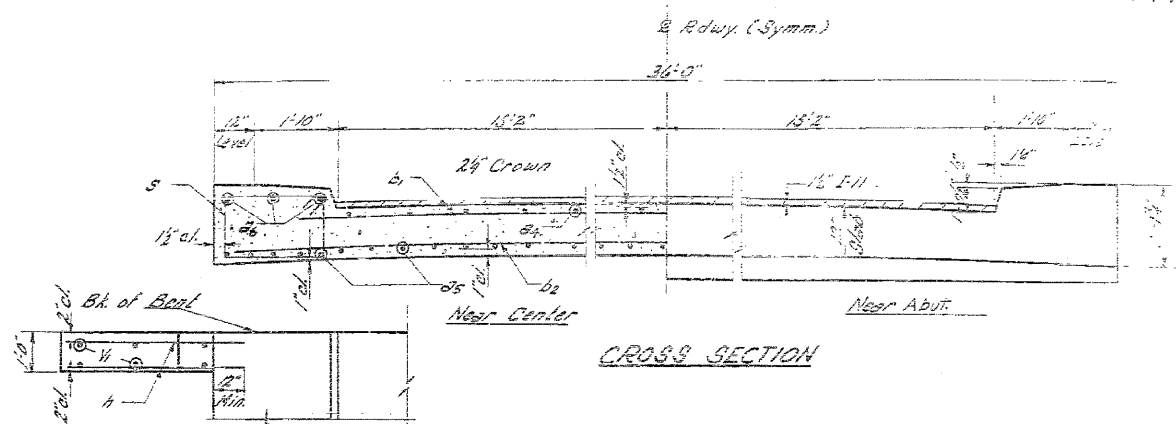
EXISTING SN. 053-0050 AS-BUILT
 PLANS FOR INFORMATION ONLY
 STRUCTURE TO BE REMOVED

DATE	BY	REVISION

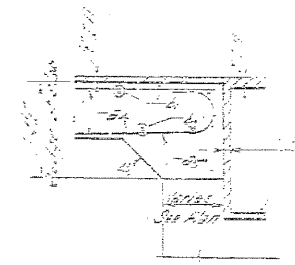


ELEVATION
 (No. Appr. Slab)

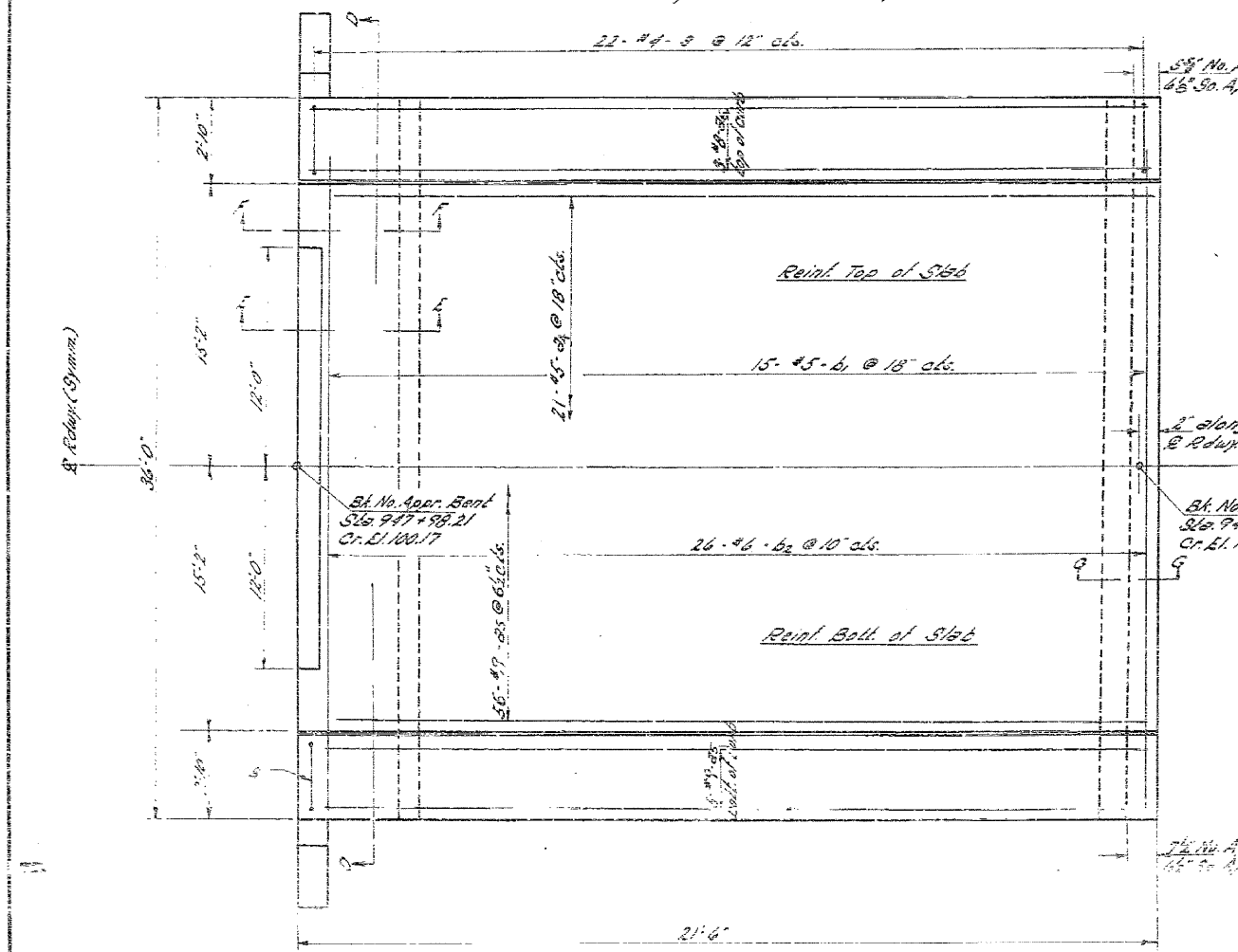
Note: So. Appr. Slab is similar except as otherwise specified.



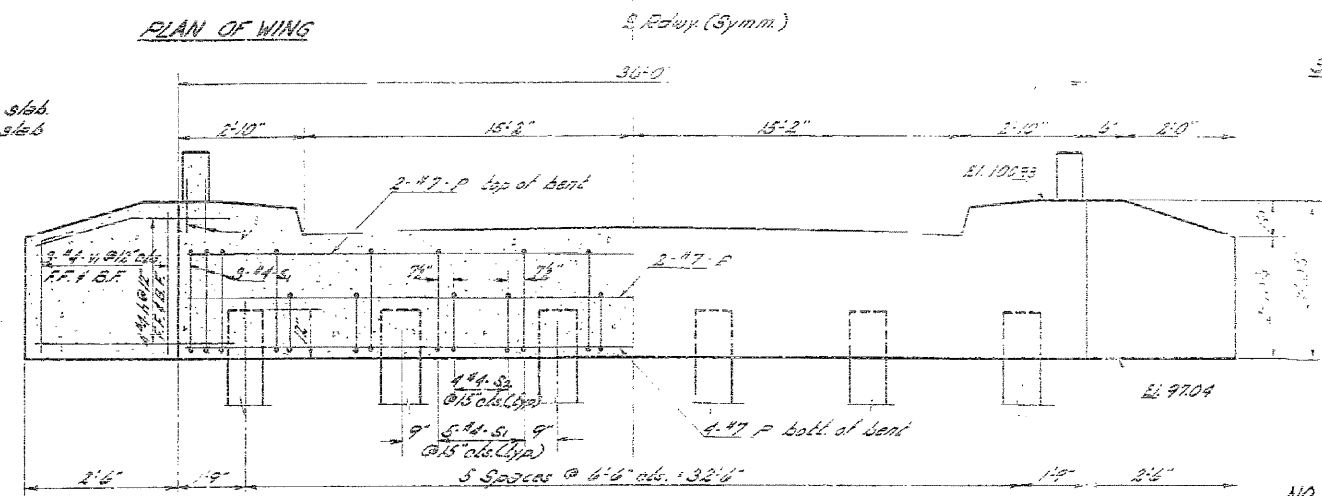
CROSS SECTION



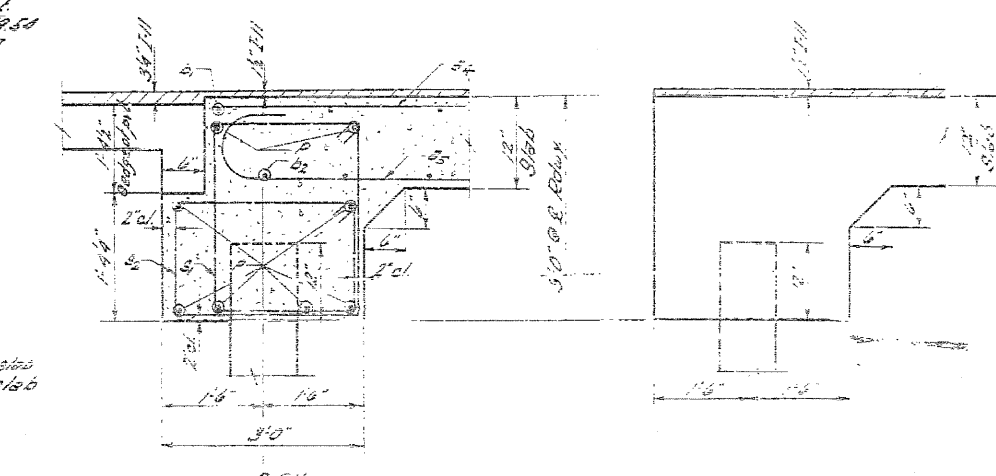
SECTION G-G



PLAN
 (No. Appr. Slab)



SECTION D-D



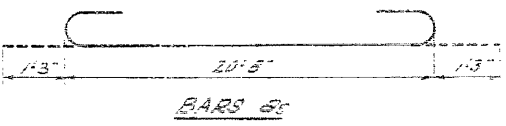
SECTION E-E

SECTION F-F

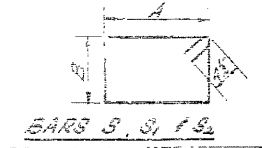
NO. 1 SO. APPR. SLABS
 BILL OF MATERIALS

Bar	No.	Size	Length	Notes
8a	42	1"	20'-8"	
8b	132	#9	23'-2"	
8c	12	#8	21'-3"	
8d	30	#5	32'-4"	
8e	52	#6	35'-0"	
8f	32	#4	3'-4"	
8g	12	#7	35'-0"	
8h	88	#4	9'-0"	
8i	40	#4	9'-4"	
8j	25	#4	2'-10"	
8k	24	#4	3'-6"	
Clear. of concrete = 2" (at all ends)				
Reinforcement bars L30, L35, L40				
Concrete Piles 120 FT. 25'				
Class A excavation 200 cu. yd.				
Notes: 210-568				
Red Pile (Crown) 200' 200'				
8	3	#4	9'-0"	
8	3	#4	9'-0"	
8	3	#4	9'-0"	

DESIGNED: *[Signature]*
 CHECKED: *[Signature]*
 DRAWN: *[Signature]*
 CHECKED: H.R.
 EXAMINED: *[Signature]*
 PASSED: *[Signature]*
 APPROVED: *[Signature]*



BAR 8c



BAR 8i, 8j, 8k

Bar	A	B
8	2'-6"	1'-0"
8i	2'-3"	2'-4"
8j	2'-3"	1'-0"

TABLE OF A & B DIMENSIONS

NORTH & SOUTH
 APPROACH SLABS
 NORTH FORK VERMILLION RIVER
 S.B.T. R. 49 SEC. 123 BP-1
 LIVINGSTON COUNTY
 STA. 949 + 25