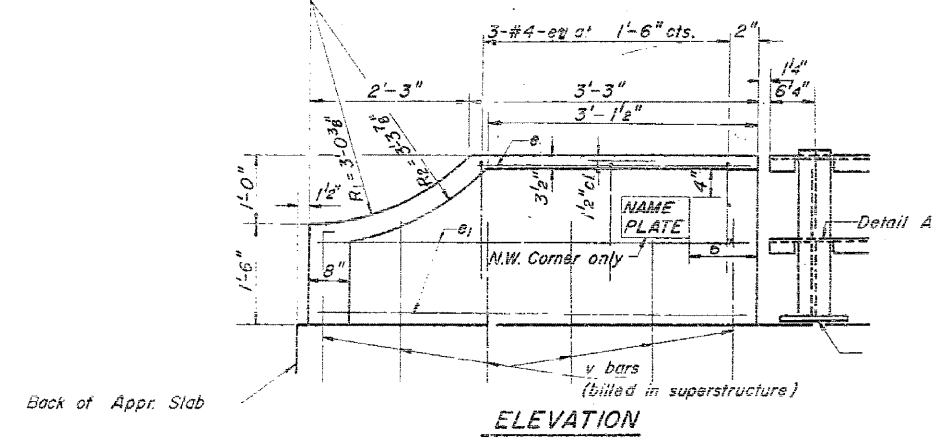
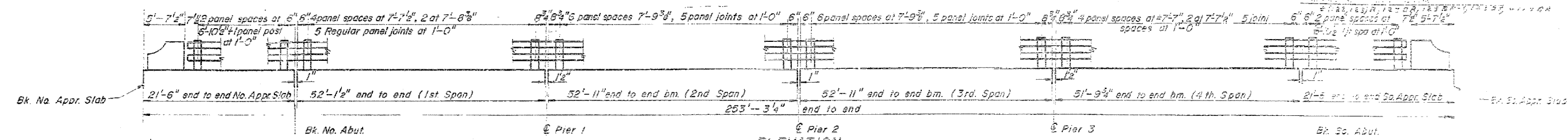
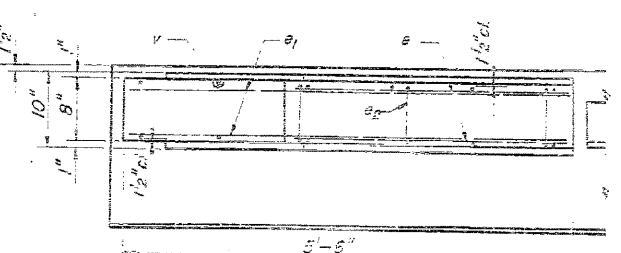


STATE OF ILLINOIS
DEPARTMENT OF PUBLIC WORKS & BUILDINGS
DIVISION OF HIGHWAYS

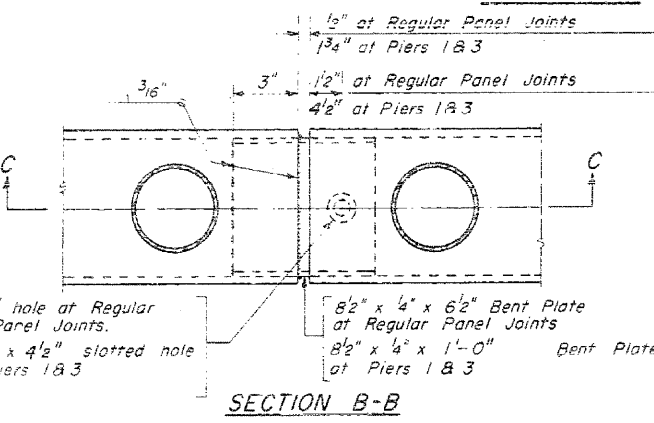
EXISTING SN. 053-0050 AS-BUILT
PLANS-FOR INFORMATION ONLY
STRUCTURE TO BE REMOVED



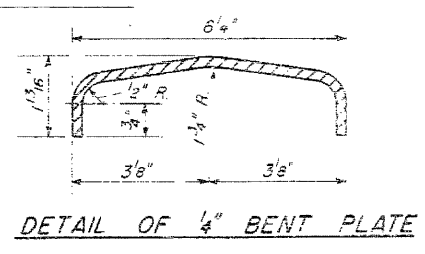
ELEVATION
(East Side Rail looking from inside)
(West Side Rail looking from outside)



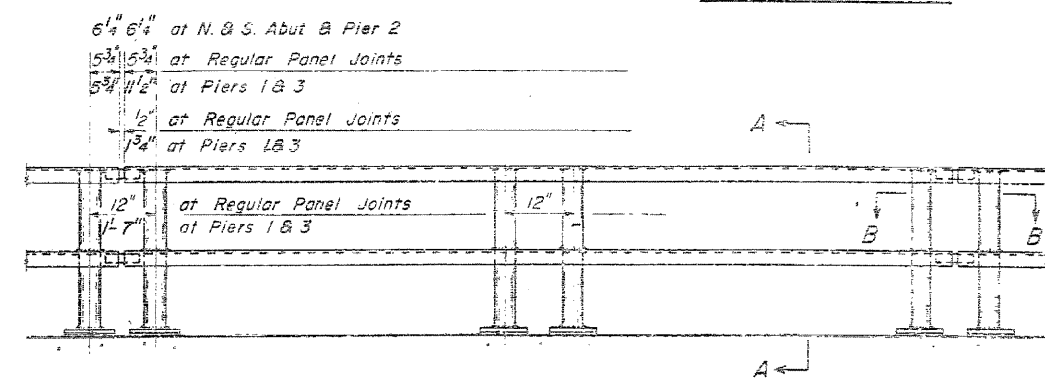
PLAN-END POST



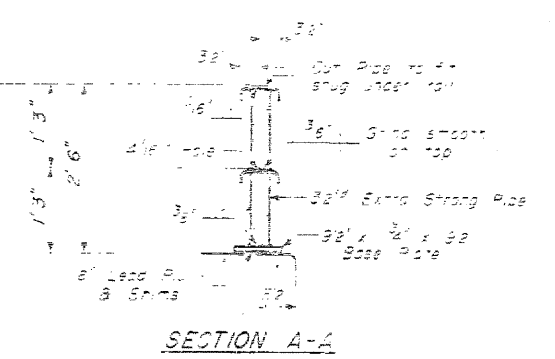
SECTION B-B



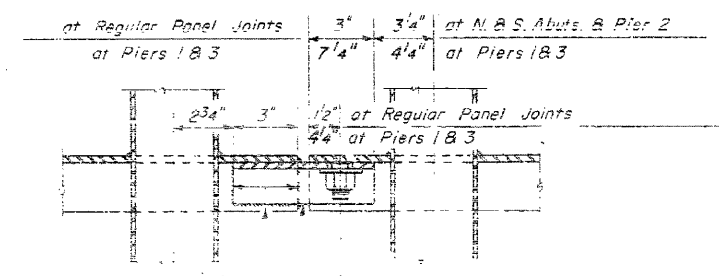
DETAIL OF 1/4" BENT PLATE



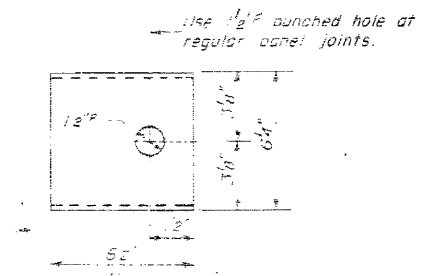
ELEVATION TYPICAL PANEL



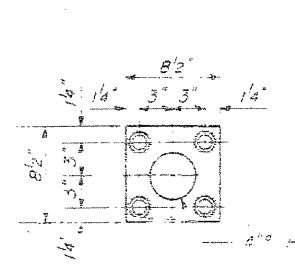
SECTION A-A



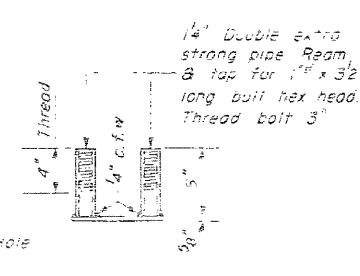
SECTION C-C



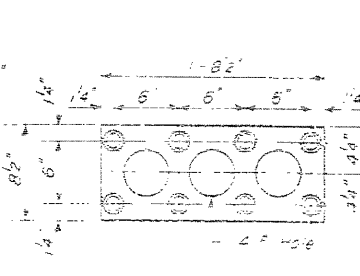
PLAN A



ANCHOR DEVICE



END VIEW



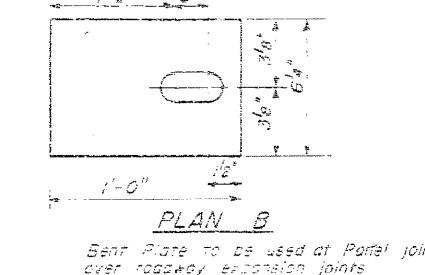
ANCHOR DEVICE

GENERAL NOTES

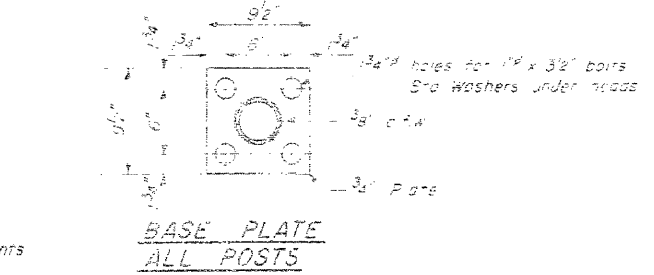
1. All bolts and nuts shall be 304 stainless steel and shall be galvanized when used in contact with concrete.
2. Project 11-2-61 and 2-6-61 shall be used for all steel work.

BILL OF MATERIALS	
ITEM	QUANTITY
STEEL	1.50
REINFORCEMENT BARS	1.00
HANDRAIL CONCRETE	1.5

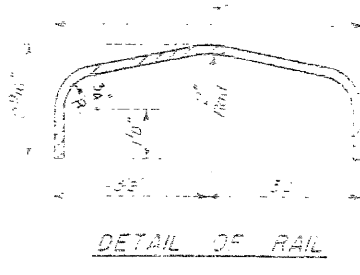
HANDRAIL DETAILS
S.B.I. RT. 42 - SEC. 123 BR-1
LIVINGSTON COUNTY
STATION 949+25



PLAN B



BASE PLATE ALL POSTS



DETAIL OF RAIL

DESIGNED	EXAMINED
CHECKED	PAIRED
DRAWN <i>W. A. Gausman</i>	APPROVED
CHECKED	