

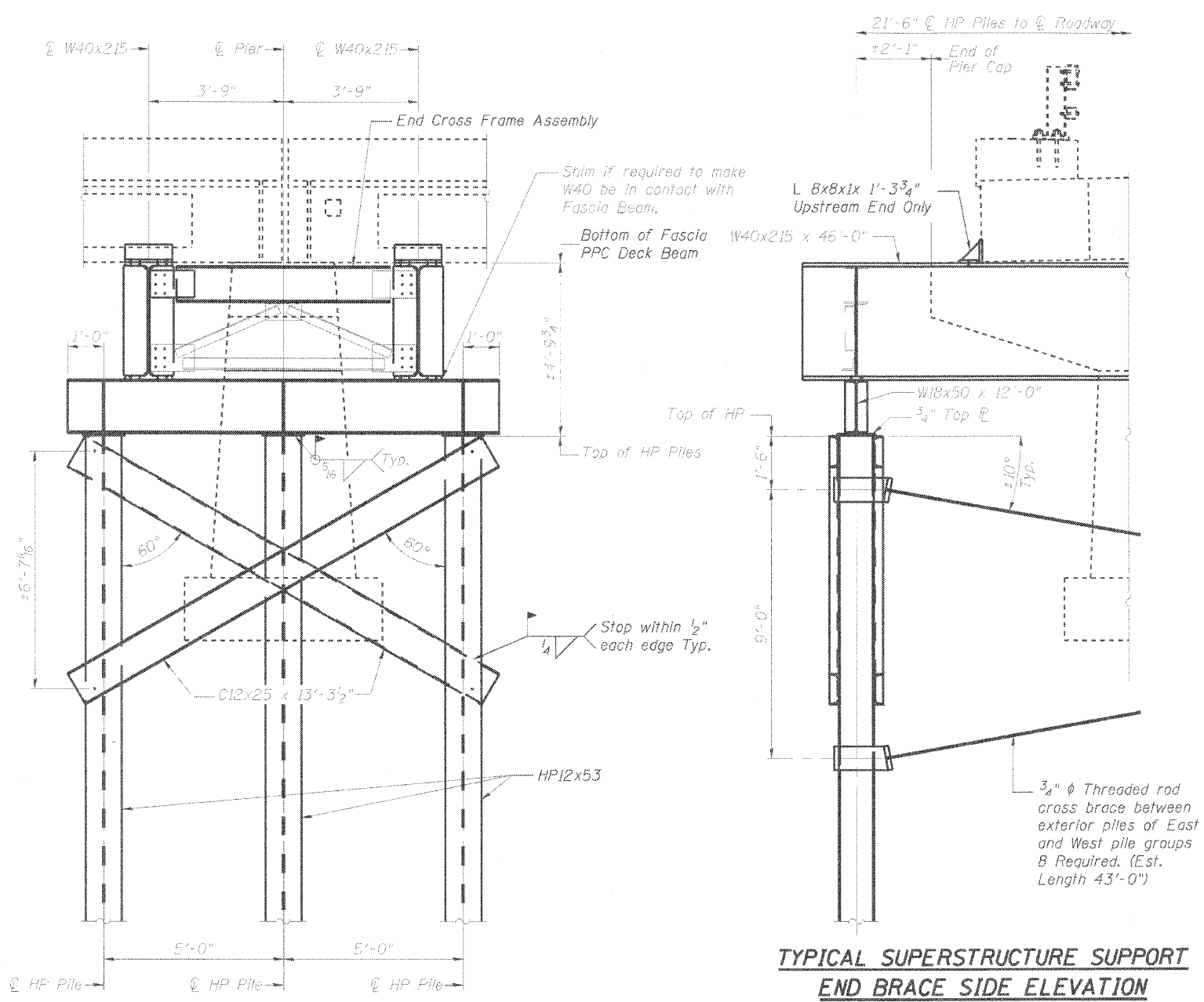
STATE OF ILLINOIS  
DEPARTMENT OF TRANSPORTATION

EXISTING SN. 053-0050 EMERGENCY  
REPAIR PLANS - FOR INFORMATION ONLY -  
STRUCTURE TO BE REMOVED

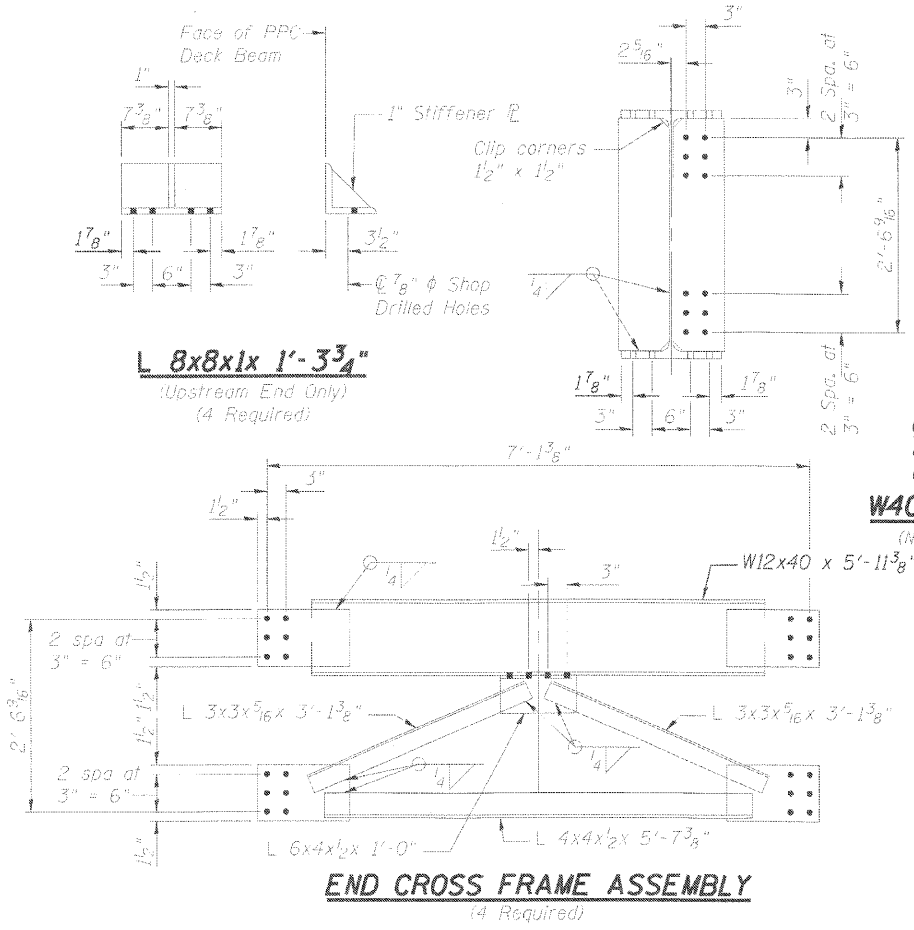
ROUTE NO.	SECTION	COUNTY	TOTAL SHEETS	SHEET NO.
		Livingston	354	151
FED. ROAD DIST. NO. 7		ILLINOIS	FED. AID PROJECT	

SHEET NO. 4  
4 SHEETS

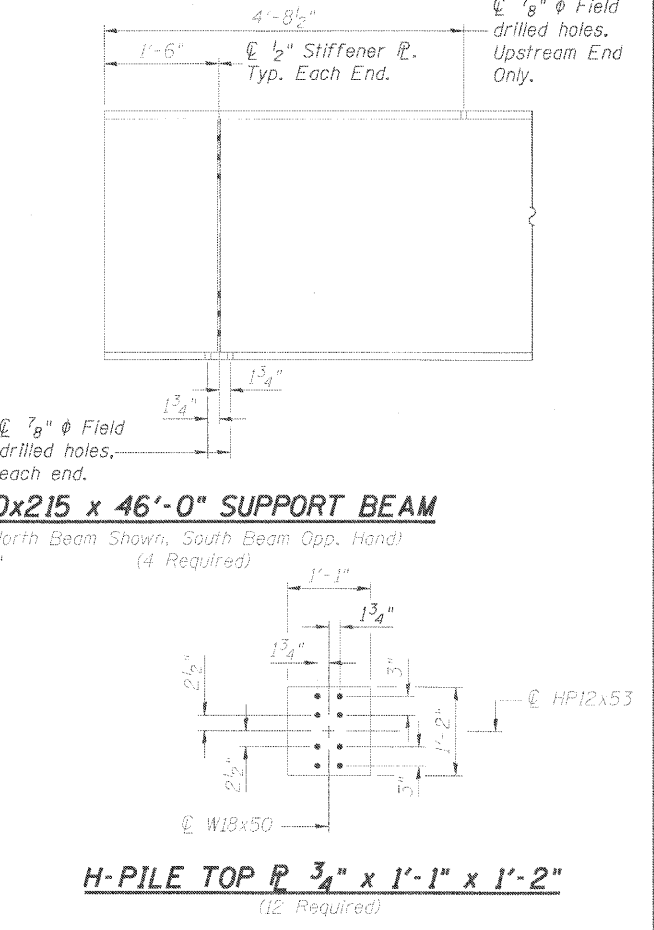
All holes shall be shop drilled unless otherwise noted.



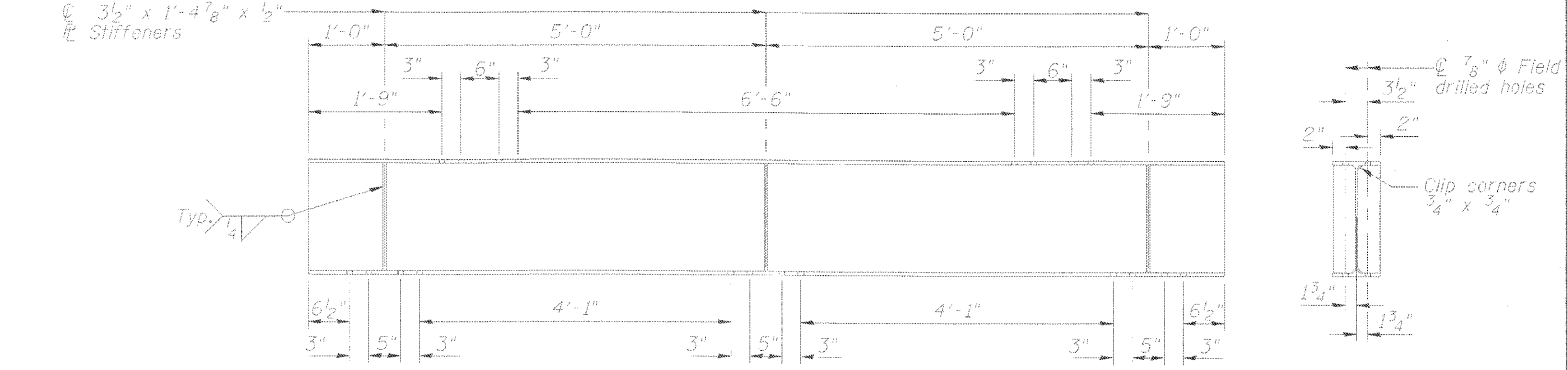
**TYPICAL SUPERSTRUCTURE SUPPORT  
END BRACE SIDE ELEVATION**



**END CROSS FRAME ASSEMBLY  
(4 Required)**



**W40x215 x 46'-0" SUPPORT BEAM  
(North Beam Shown, South Beam Opp. Hand)  
(4 Required)**

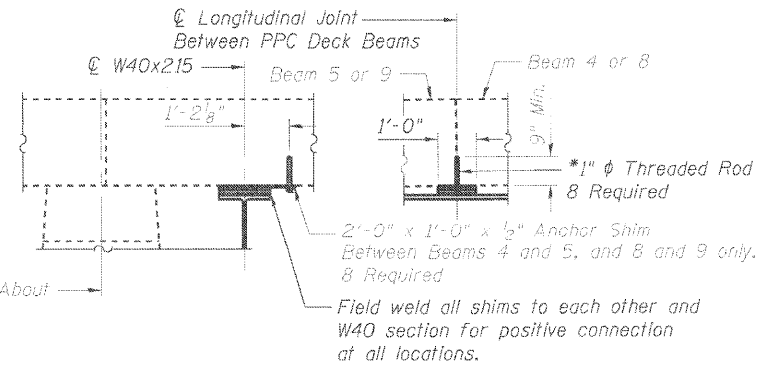


**CROSS BEAM W18x50 x 12'-0"  
(4 Required)**

**TYPICAL SUPERSTRUCTURE SUPPORT  
END BRACE END ELEVATION**

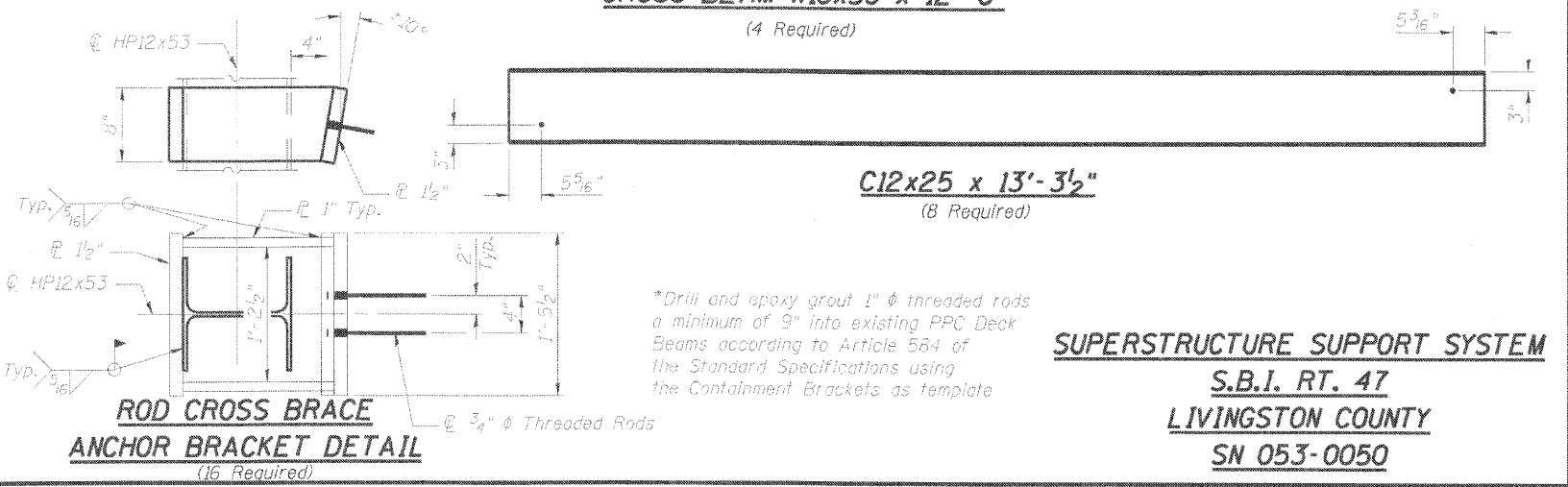
**PILE DATA**

Type: Steel H-Piles (HP12x53 min)  
Design Capacity: 70T  
Required Capacity: 150T  
Est. Length: 100'-0"  
No. Required: 12



**TYPICAL ANCHOR SHIM AND SHIM DETAIL**

Contractor to provide shims, at all longitudinal beam joints, in the dimensions of 1'-4" x 1'-0", for the required thickness between the W40x215 and the bottom of the PPC Deck Beams. Shims to be centered on all longitudinal joints. Thickness varies from 0" at the fascia beam to ±3/2" at the Roadway.



**ROD CROSS BRACE  
ANCHOR BRACKET DETAIL  
(16 Required)**

\*Drill and epoxy grout 1" threaded rods a minimum of 9" into existing PPC Deck Beams according to Article 584 of the Standard Specifications using the Containment Brackets as template

**SUPERSTRUCTURE SUPPORT SYSTEM**

S.B.I. RT. 47  
LIVINGSTON COUNTY  
SN 053-0050

DESIGNED	J.S.B.
CHECKED	A.T.H.
DRAWN	Drew Christopher
CHECKED	J.S.B., A.T.H.

October 1, 2004	
EXAMINED	John A. Morris ENGINEER OF STRUCTURAL SERVICES
PASSED	Ralph E. Anderson ENGINEER OF BRIDGES AND STRUCTURES