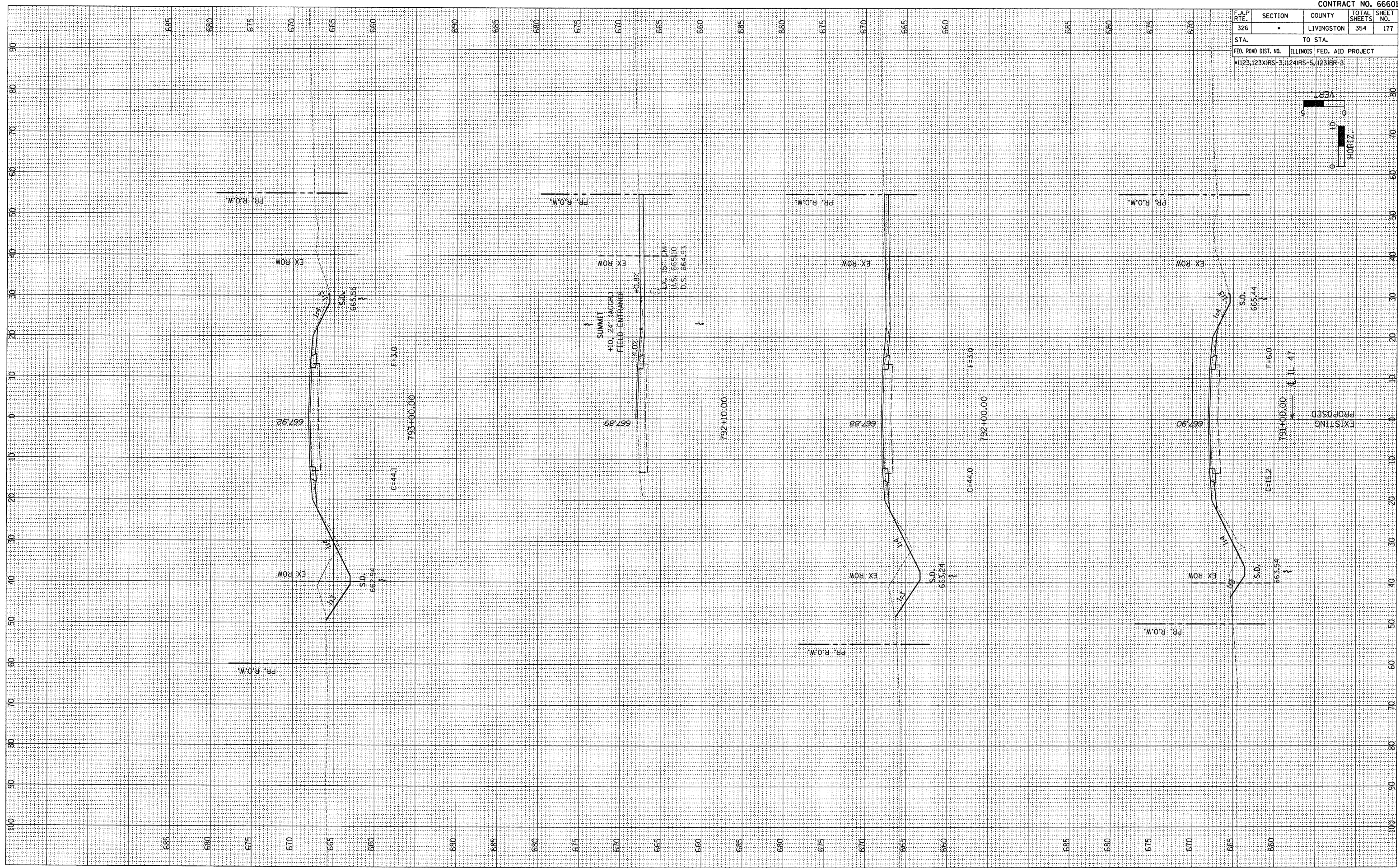
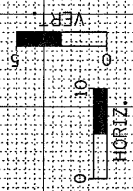


F.A.P. RTE. 326	SECTION •	COUNTY LIVINGSTON	TOTAL SHEETS 354	SHEET NO. 177
STA.		TO STA.		
FED. ROAD DIST. NO.		ILLINOIS FED. AID PROJECT		
•1123,123XRS-3,124RS-5,123BR-3				



FINAL SURVEY	BY	DATE
SURVEYED		
NOTED		
PLOTTED		
TEMPLE		
AREAS		
CHECKED		

ORIGINAL SURVEY	BY	DATE
CLERKED		
PLOTTED		
TEMPLE		
AREAS		
CHECKED		