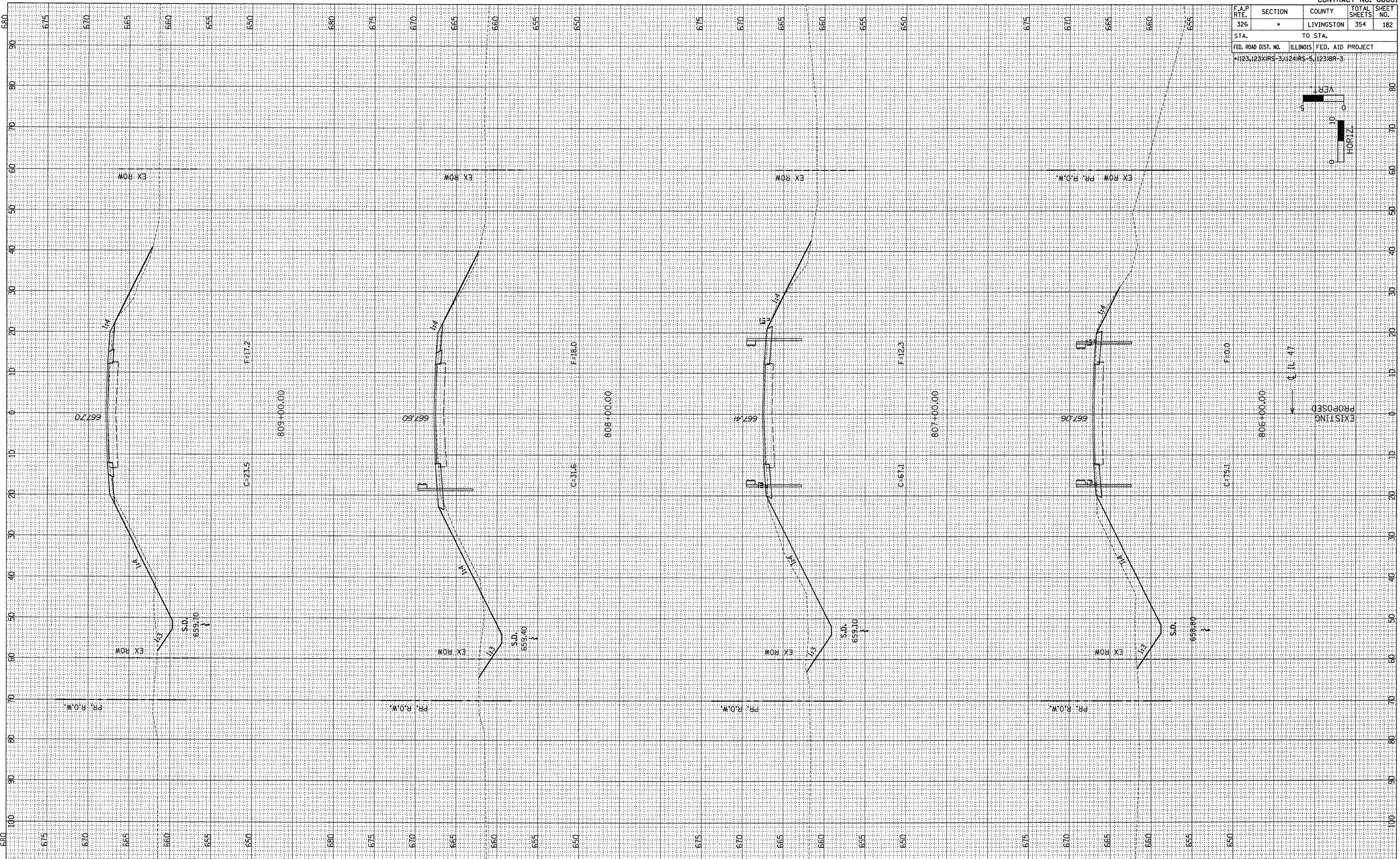
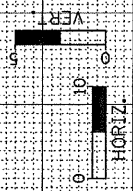


F.A.P. RTE. 326	SECTION •	COUNTY LIVINGSTON	TOTAL SHEETS 354	SHEET NO. 182
STA.		TO STA.		
FED. ROAD DIST. NO.		ILLINOIS FED. AID PROJECT		
1123.123XIRS-3		1124RS-5, 123BR-3		



FINAL SURVEY	DATE	BY
REVISIONS		
NOTED		
PLOTTED		
TEMPLATE		
AREAS		
CHECKED		

ORIGINAL SURVEY	DATE	BY
REVISIONS		
NOTED		
PLOTTED		
TEMPLATE		
AREAS		
CHECKED		