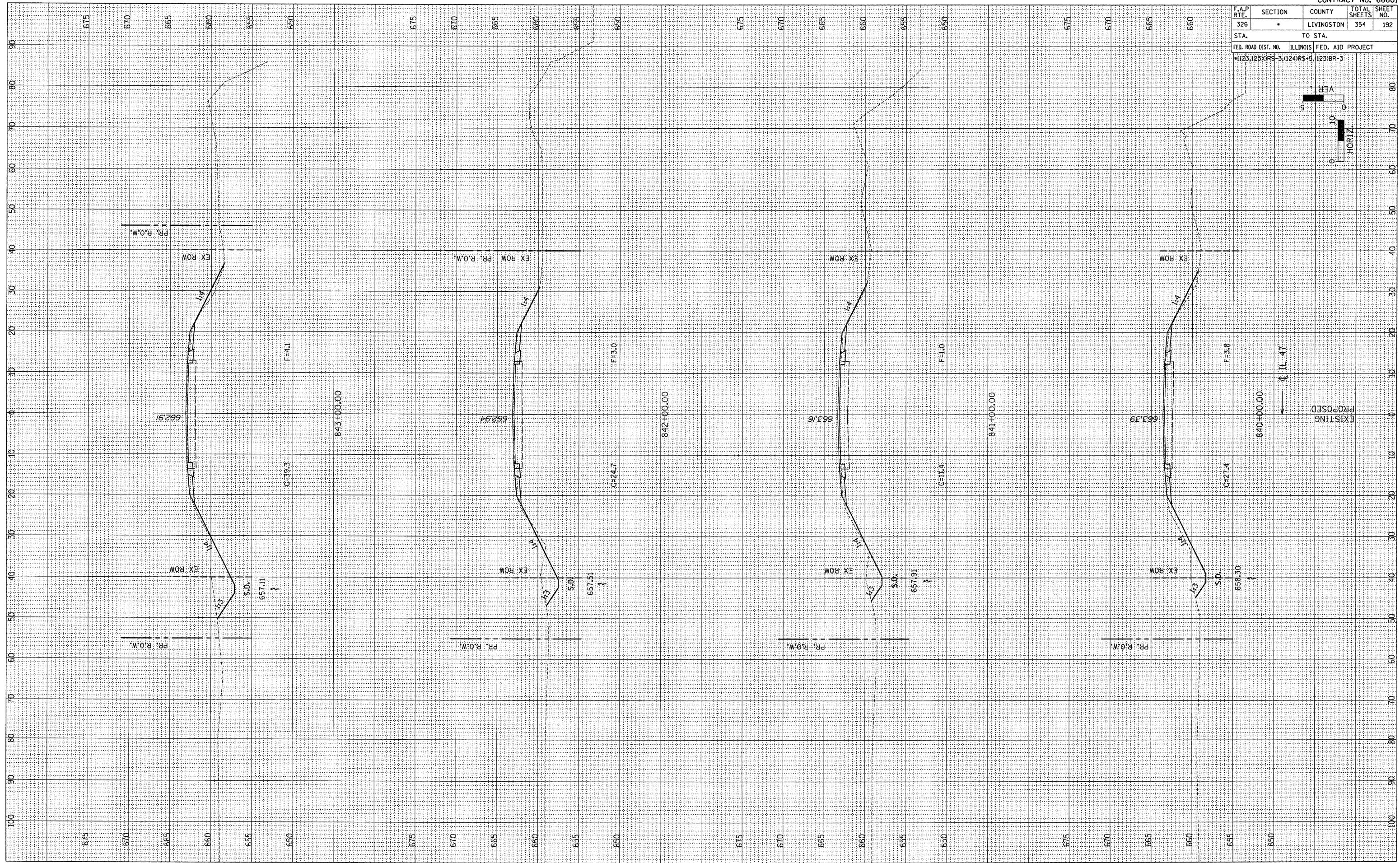
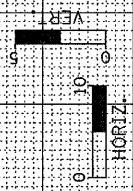


F.A.P. RTE. 326	SECTION •	COUNTY LIVINGSTON	TOTAL SHEETS 354	SHEET NO. 192
STA.		TO STA.		
FED. ROAD DIST. NO.		ILLINOIS FED. AID PROJECT		
1123123XIRS-3(124)RS-5		11231BR-3		



EXISTING

PROPOSED

FINAL SURVEY	BY	DATE
REVIEWED		
NOTE BOOK		
AREAS CHECKED		
AREAS CHECKED		

ORIGINAL SURVEY	BY	DATE
REVIEWED		
NOTE BOOK		
AREAS CHECKED		
AREAS CHECKED		