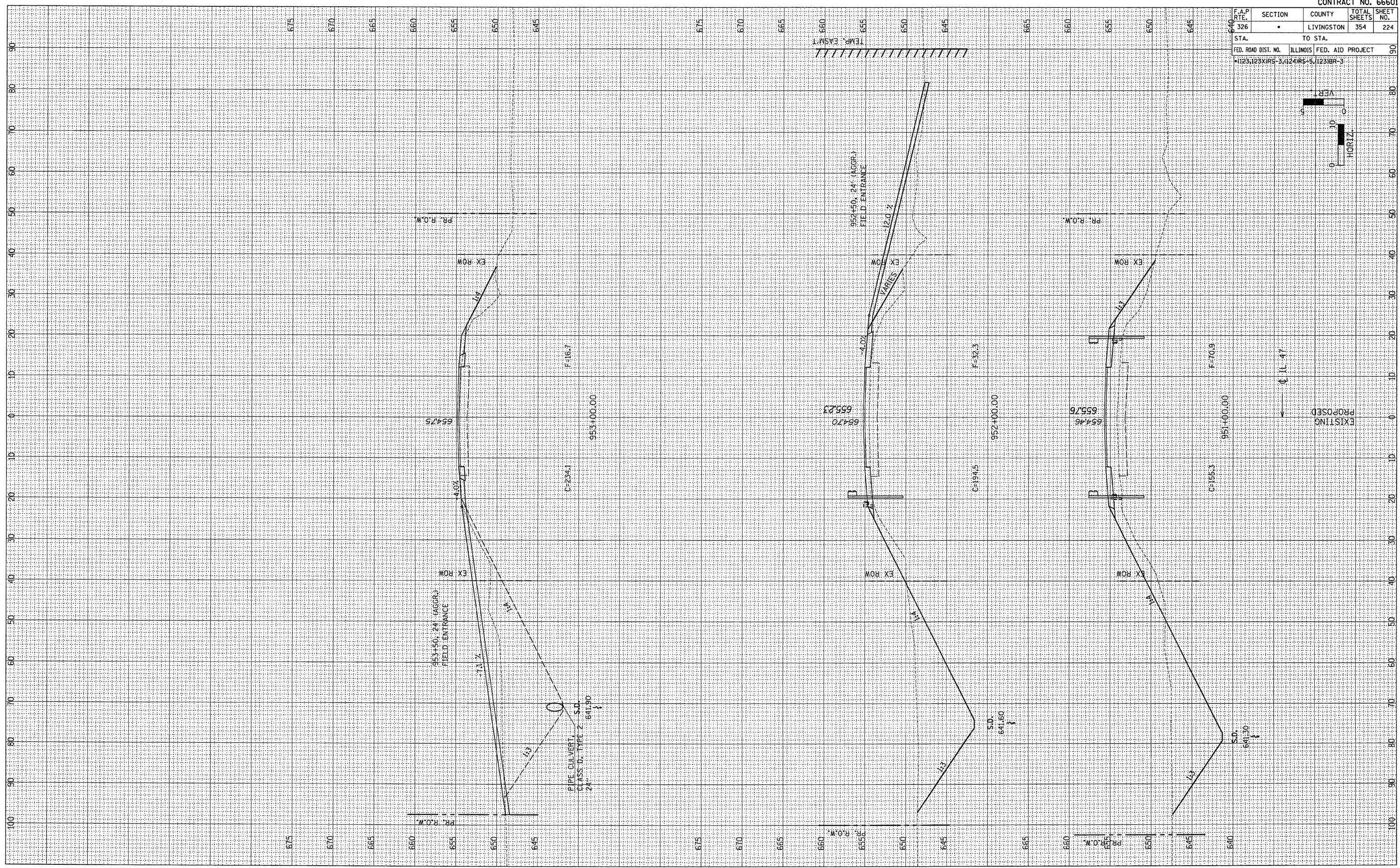
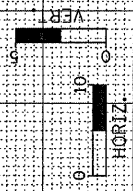


F.A.P. RITE.	SECTION	COUNTY	TOTAL SHEETS	SHEET NO.
326	*	LIVINGSTON	354	224
STA.		TO STA.		
FED. ROAD DIST. NO.		ILLINOIS FED. AID PROJECT		
•123123X1RS-3,1241RS-5,1231BR-3				



EXISTING
PROPOSED

11.47

F=70.9

951+00.00

C=155.3

655.76

PR. R.O.W.

952+00.00

C=194.5

F=32.3

655.23

952+50.24 (AGGR.)
FIELD ENTRANCE

EX ROW

EX ROW

4.0%

654.70

B

EX ROW

EX ROW

11.4

11.3

S.D. 641.60

PR. R.O.W.

953+00.00

C=234.1

F=16.7

654.75

PR. R.O.W.

EX ROW

EX ROW

4.0%

654.75

A

EX ROW

EX ROW

11.3

11.4

S.D. 641.90

PR. R.O.W.

951+50.24 (AGGR.)
FIELD ENTRANCE

EX ROW

EX ROW

11.3

11.4

PR. R.O.W.

PIPE CULVERT
CLASS 'D', TYPE 2,
24"

S.D. 641.90

S.D. 641.60

FINAL SURVEY	BY	DATE
REVISIONS		
PLOTTED		
TEMPLATE		
NOTE BOOK		
AREAS CHECKED		
NO.		

ORIGINAL SURVEY	BY	DATE
REVISIONS		
PLOTTED		
TEMPLATE		
NOTE BOOK		
AREAS CHECKED		
NO.		