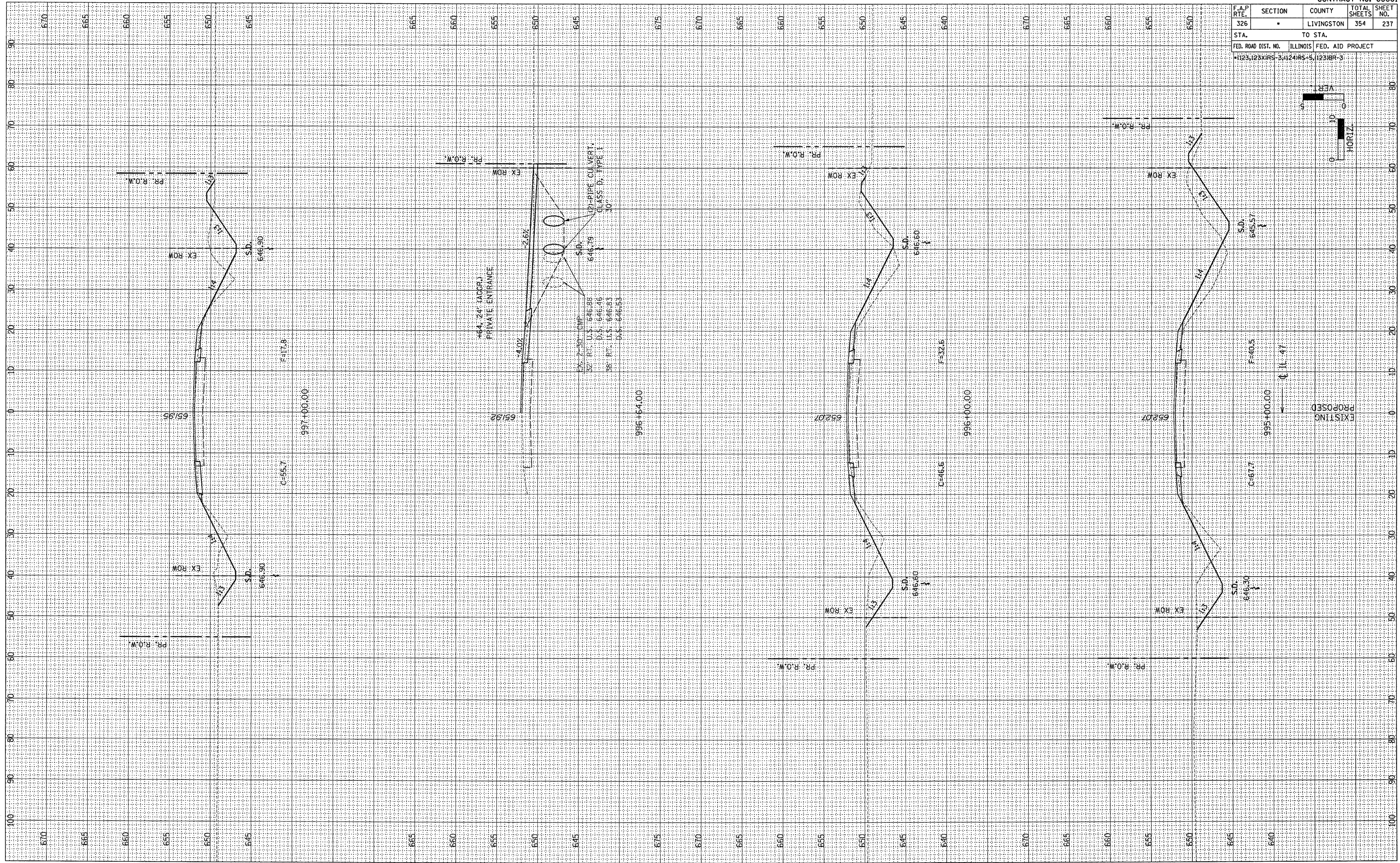
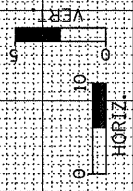


F.A.P. RTE. 326	SECTION •	COUNTY LIVINGSTON	TOTAL SHEETS 354	SHEET NO. 237
STA.		TO STA.		
FED. ROAD DIST. NO.		ILLINOIS		FED. AID PROJECT
•1123,123XIRS-3,4,24IRS-5,123IBR-3				



EXISTING PROPOSED

FINAL SURVEY	BY	DATE
REVISIONS		
PLOTTED		
TEMPLATE		
AREAS		
CHECKED		

ORIGINAL SURVEY	BY	DATE
REVISIONS		
PLOTTED		
TEMPLATE		
AREAS		
CHECKED		