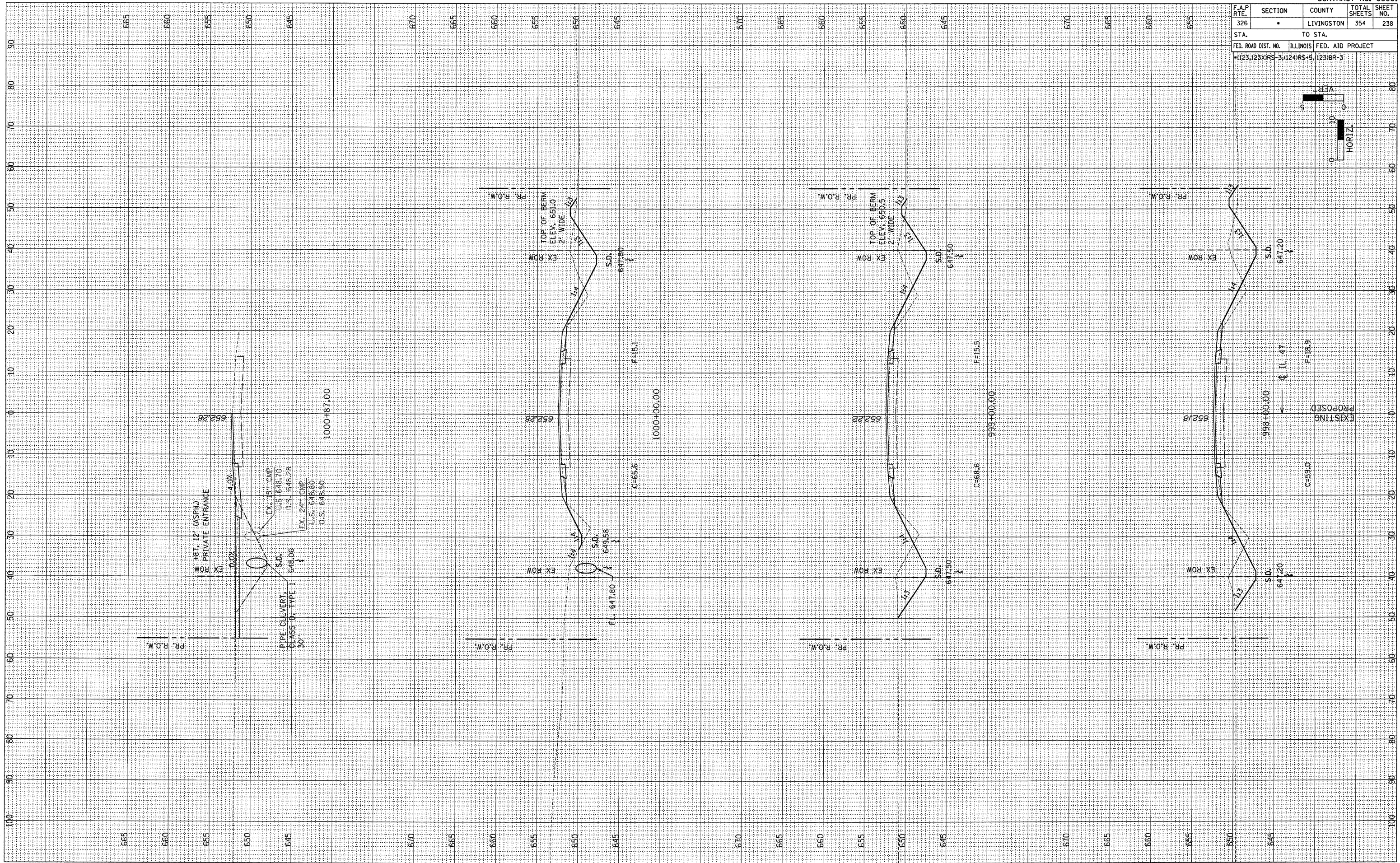
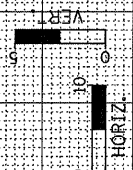


F.A.P. RTE. 326	SECTION •	COUNTY LIVINGSTON	TOTAL SHEETS 354	SHEET NO. 238
STA. TO STA.		FED. ROAD DIST. NO. ILLINOIS FED. AID PROJECT		
		1123123XIRS-3+124IRS-5, 1231BR-3		



FINAL SURVEY	REVISIONS	BY	DATE
NO.	NO.		
NOTE BOOK	PLOTTED		
AREAS CHECKED	TEMPLATE		
	AREAS CHECKED		

ORIGINAL SURVEY	REVISIONS	BY	DATE
NO.	NO.		
NOTE BOOK	PLOTTED		
AREAS CHECKED	TEMPLATE		
	AREAS CHECKED		