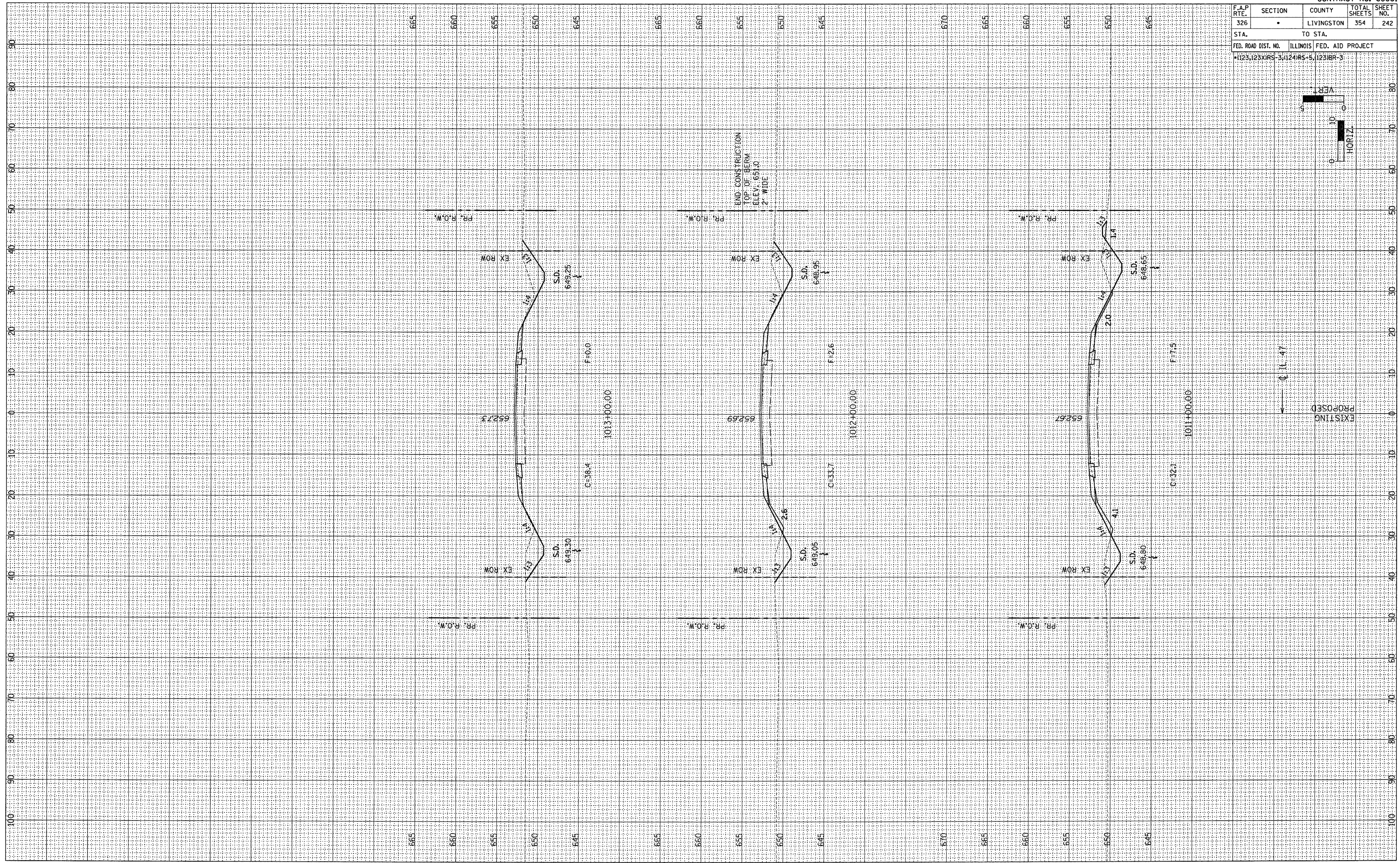


F.A.P. RTE. 326	SECTION •	COUNTY LIVINGSTON	TOTAL SHEETS 354	SHEET NO. 242
STA. TO STA.		FED. ROAD DIST. NO. ILLINOIS FED. AID PROJECT		
		•1123,123XIRS-3;124IRS-5;123IBR-3		



ORIGINAL SURVEY	DATE
BY	
REVIEWED	
PLOTTED	
TEMPLATE	
AREAS	
CHECKED	
NO.	

ORIGINAL SURVEY	DATE
BY	
REVIEWED	
PLOTTED	
TEMPLATE	
AREAS	
CHECKED	
NO.	