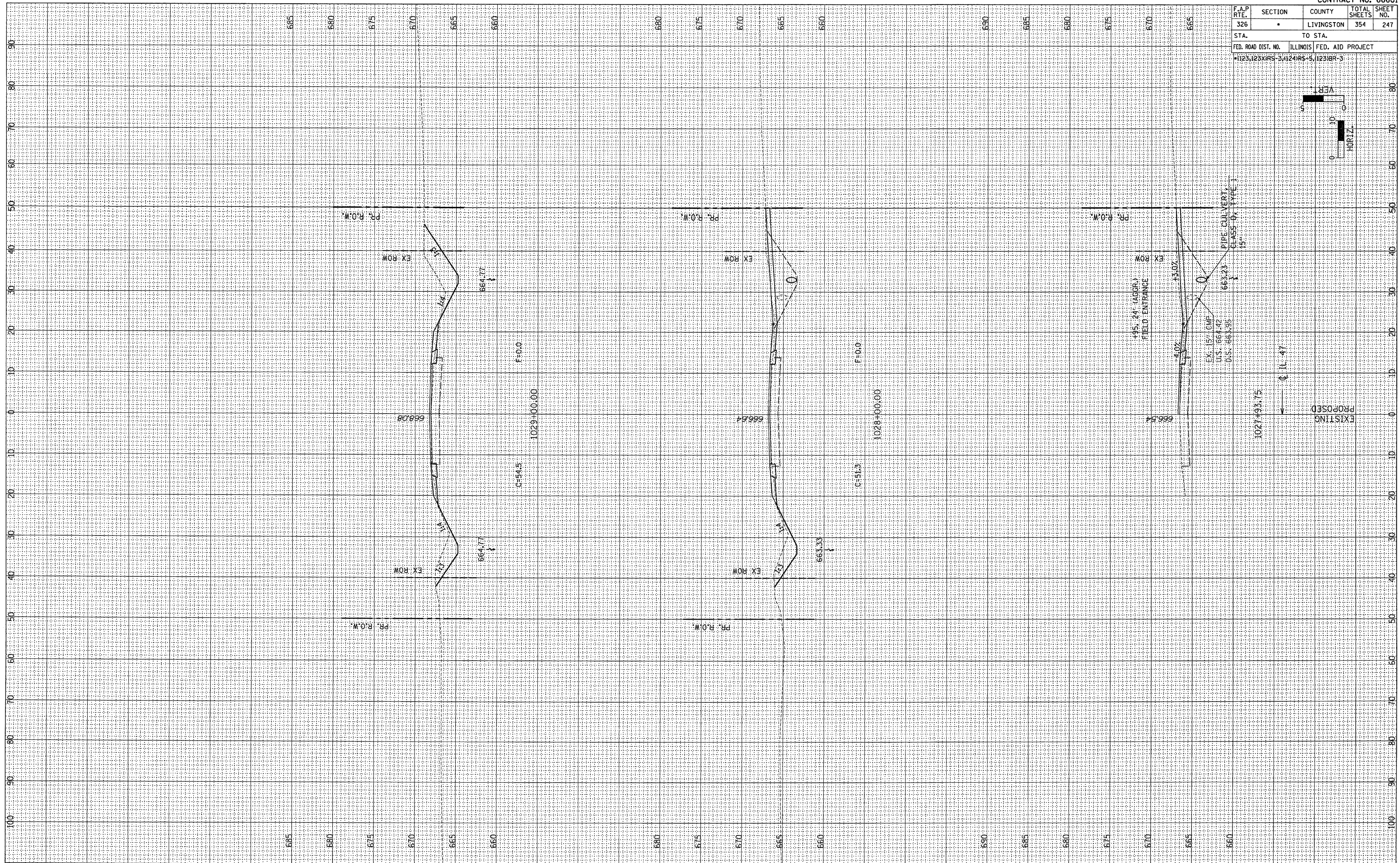
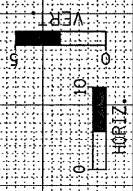


F.A.P. RTE. 326	SECTION •	COUNTY LIVINGSTON	TOTAL SHEETS 354	SHEET NO. 247
STA.		TO STA.		
FED. ROAD DIST. NO.		ILLINOIS	FED. AID PROJECT	
1123123XIRS-3,4124RS-5,1231BR-3				



FINAL SURVEY	CHECKED	BY	DATE
NOTE BOOK	PLOTTED		
AREAS	TEMPLATE		
CHECKED	AREAS		

ORIGINAL SURVEY	EXAMINED	BY	DATE
NOTE BOOK	PLOTTED		
AREAS	TEMPLATE		
CHECKED	AREAS		