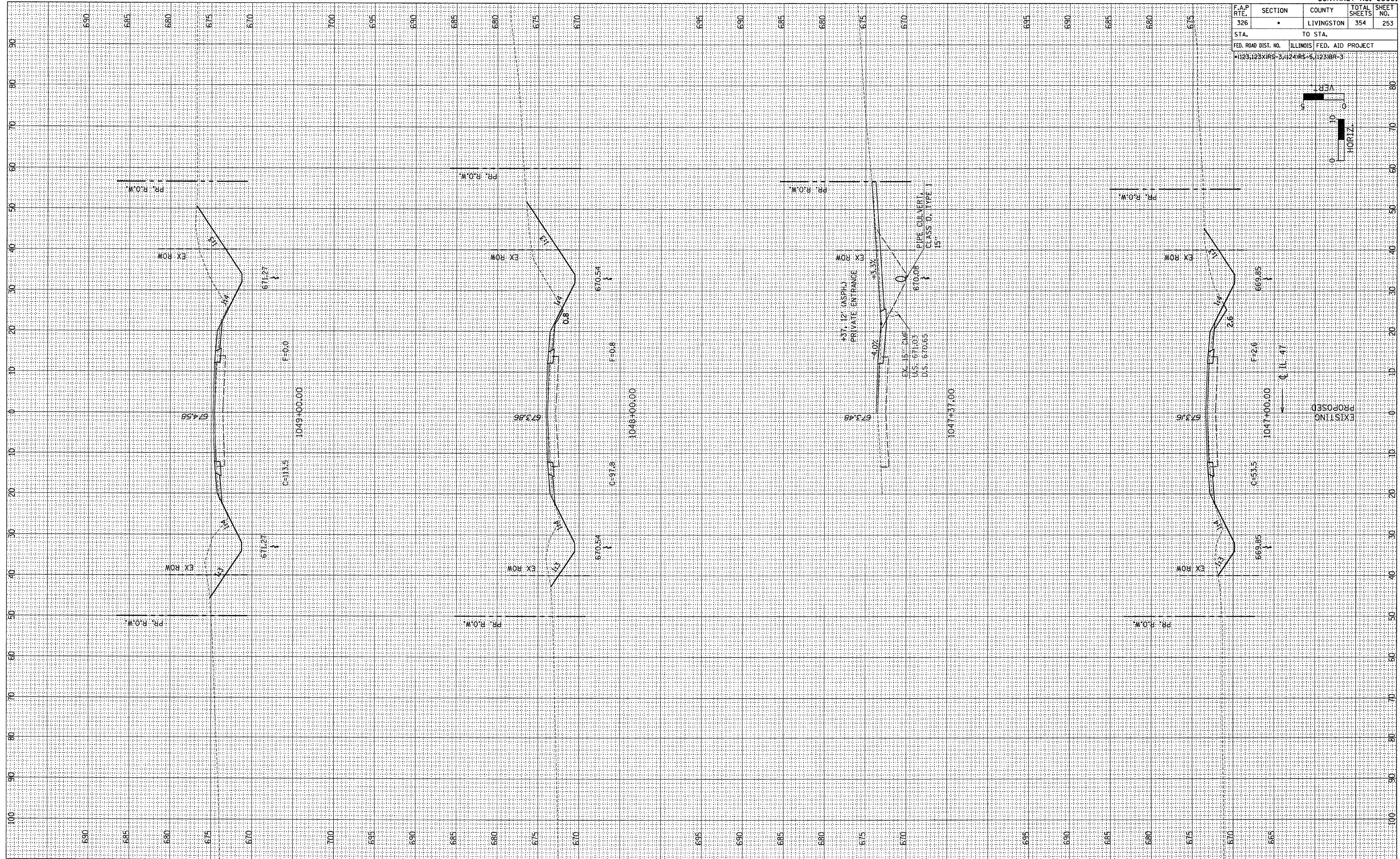
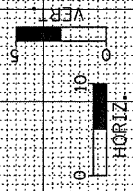


F.A.P. RTE. 326	SECTION *	COUNTY LIVINGSTON	TOTAL SHEETS 354	SHEET NO. 253
STA. TO STA.		ILLINOIS FED. AID PROJECT		
FED. ROAD DIST. NO. 123125XIRS-3, 124RS-5, 1231BR-3				



EXISTING  
PROPOSED

FINAL SURVEY	DATE
BY	
NO.	
NO.	
NO.	

ORIGINAL SURVEY	DATE
BY	
NO.	
NO.	
NO.	