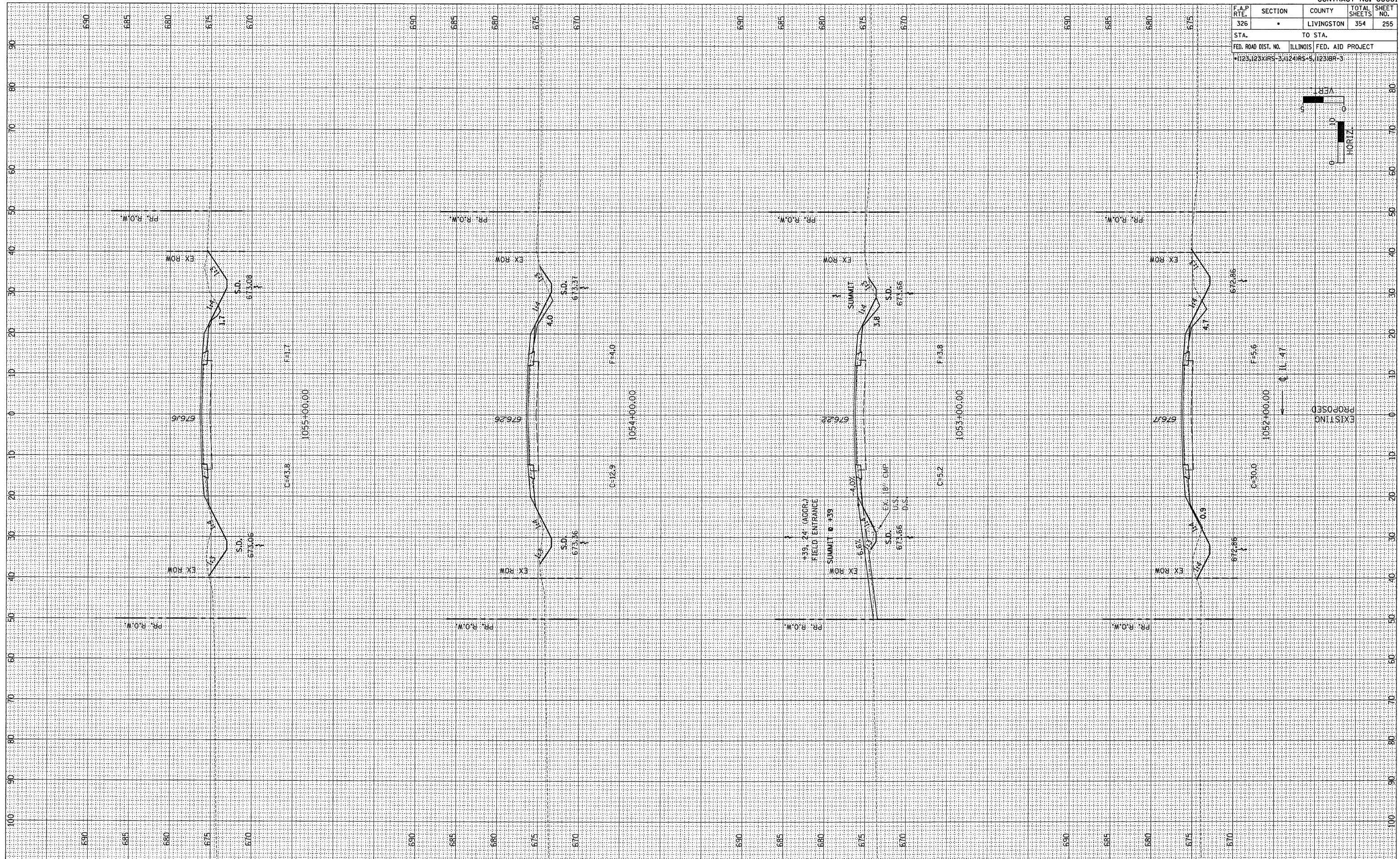
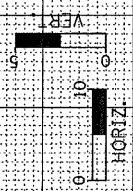


F.A.P. RTE. 326	SECTION •	COUNTY LIVINGSTON	TOTAL SHEETS 354	SHEET NO. 255
STA.		TO STA.		
FED. ROAD DIST. NO.		ILLINOIS		FED. AID PROJECT
1123,123XRS-3,4,24RS-5,123BR-3				



FINAL SURVEY	BY	DATE
CHECKED		
PLOTTED		
TEMPLATE		
NOTE BOOK		
AREAS		
CHECKED		

ORIGINAL SURVEY	BY	DATE
CHECKED		
PLOTTED		
TEMPLATE		
NOTE BOOK		
AREAS		
CHECKED		