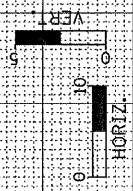
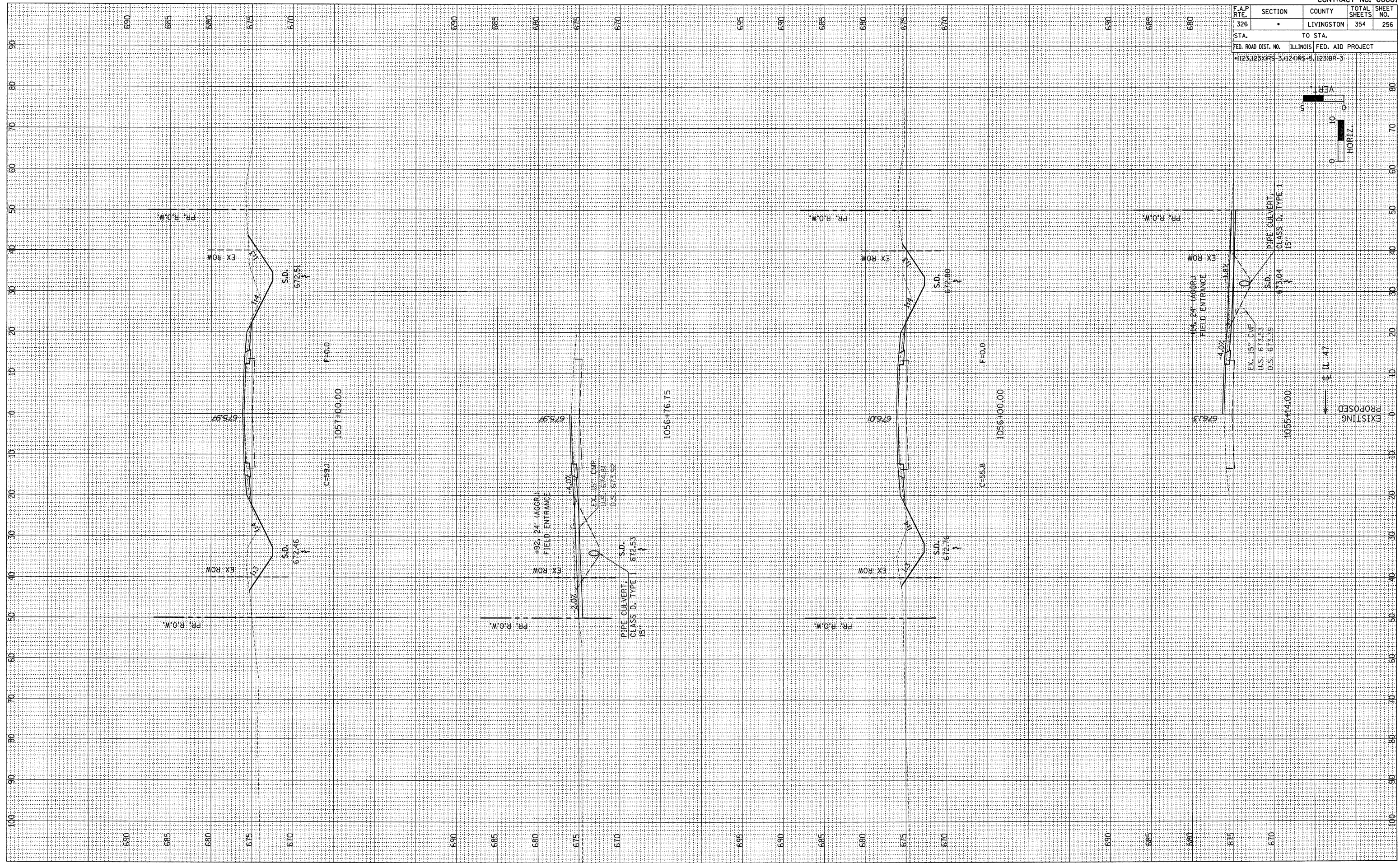


F.A.P. RTE. 326	SECTION •	COUNTY LIVINGSTON	TOTAL SHEETS 354	SHEET NO. 256
STA. TO STA.		FED. ROAD DIST. NO. ILLINOIS FED. AID PROJECT		
		•1123,123XIRS-3,124IRS-5,123IBR-3		



EXISTING  
PROPOSED

IL 47

FINAL SURVEY	BY	DATE
REVISIONS		
NOTED		
PLOTTED		
TEMPLATE		
AREAS		
CHECKED		
NO.		

ORIGINAL SURVEY	BY	DATE
REVISIONS		
NOTED		
PLOTTED		
TEMPLATE		
AREAS		
CHECKED		
NO.		