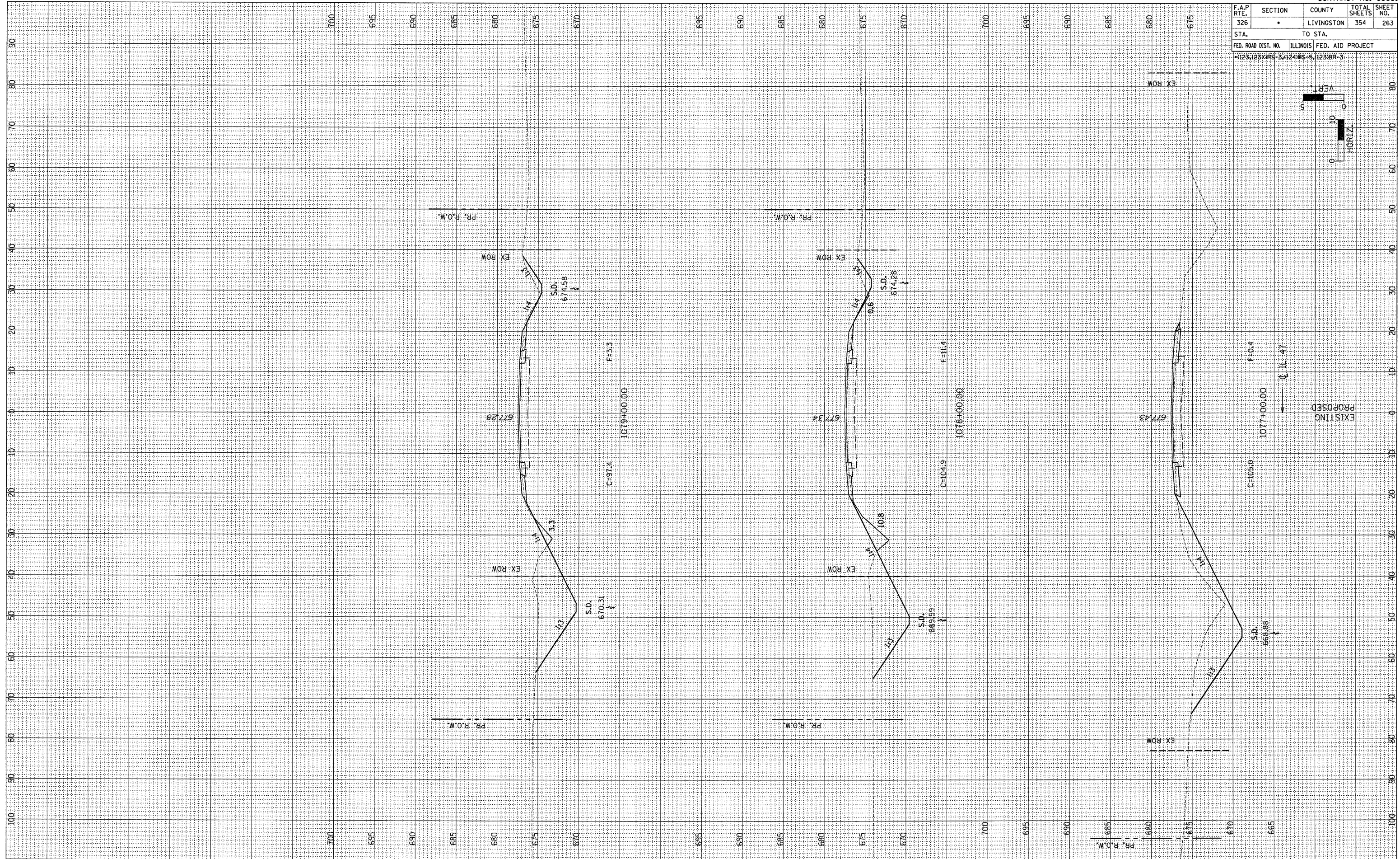
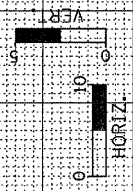


F.A.P. R.T.E. 326	SECTION •	COUNTY LIVINGSTON	TOTAL SHEETS 354	SHEET NO. 263
STA.		TO STA.		
FED. ROAD DIST. NO.		ILLINOIS FED. AID PROJECT		
•1123125X1RS-3		•11241RS-5, 11231BR-3		



FINAL SURVEY	BY	DATE
REVISIONS		
PLOTTED		
NOTE BOOK		
AREAS		
AREAS CHECKED		

ORIGINAL SURVEY	BY	DATE
REVISIONS		
PLOTTED		
NOTE BOOK		
AREAS		
AREAS CHECKED		