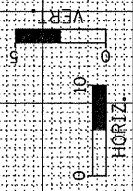
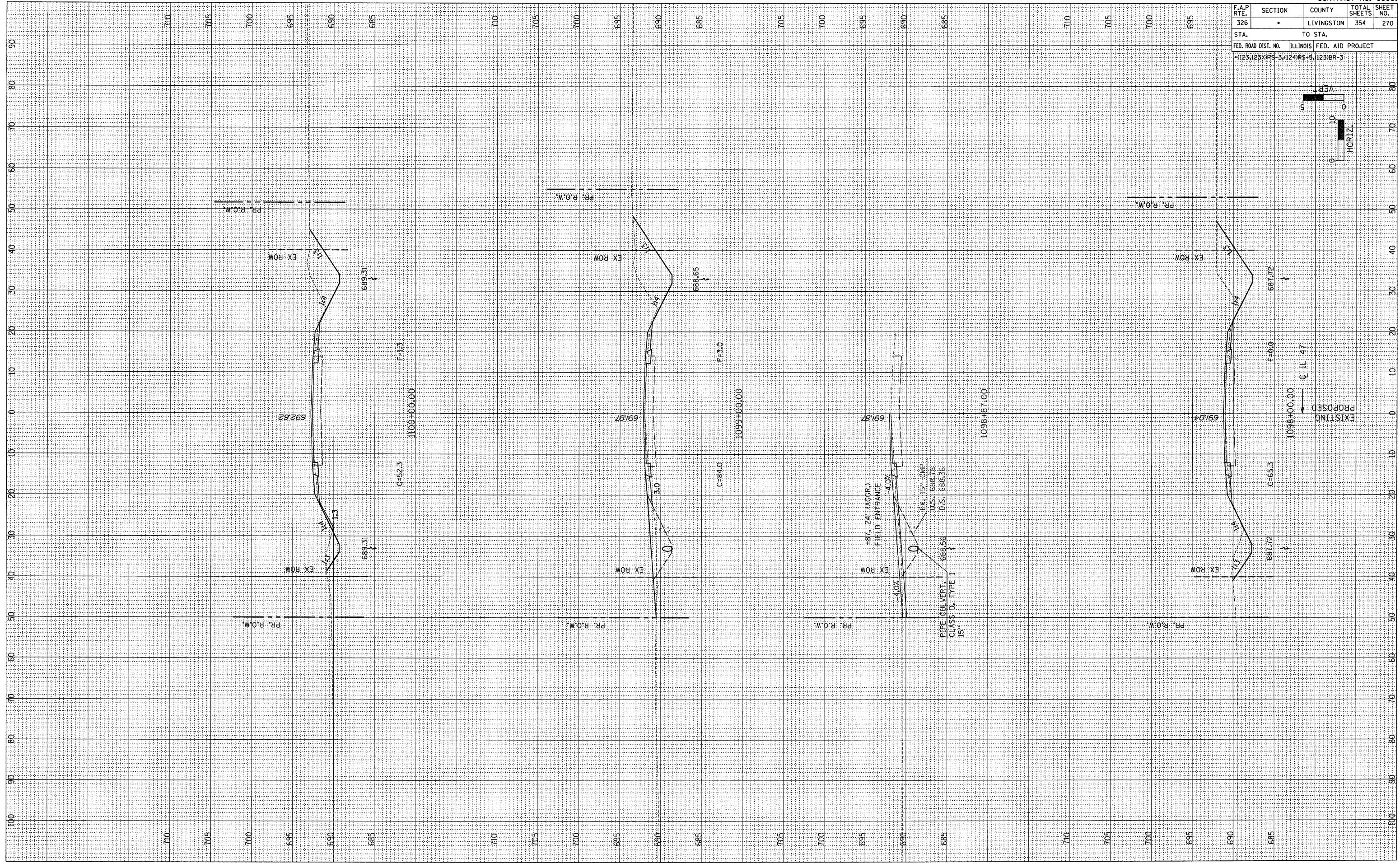


F.A.P. RTE. 326	SECTION •	COUNTY LIVINGSTON	TOTAL SHEETS 354	SHEET NO. 270
STA. TO STA.		FED. ROAD DIST. NO. ILLINOIS FED. AID PROJECT		
•123123XIRS-3;124IRS-5;123IBR-3				



EXISTING
PROPOSED
1098+00.00
C=65.3
F=0.0
687.72
687.72

FINAL SURVEY	DATE
REVISIONS	BY
NOTED	
PLOTTED	
TEMPLATE	
AREAS	
CHECKED	
NO.	

ORIGINAL SURVEY	DATE
REVISIONS	BY
NOTED	
PLOTTED	
TEMPLATE	
AREAS	
CHECKED	
NO.	