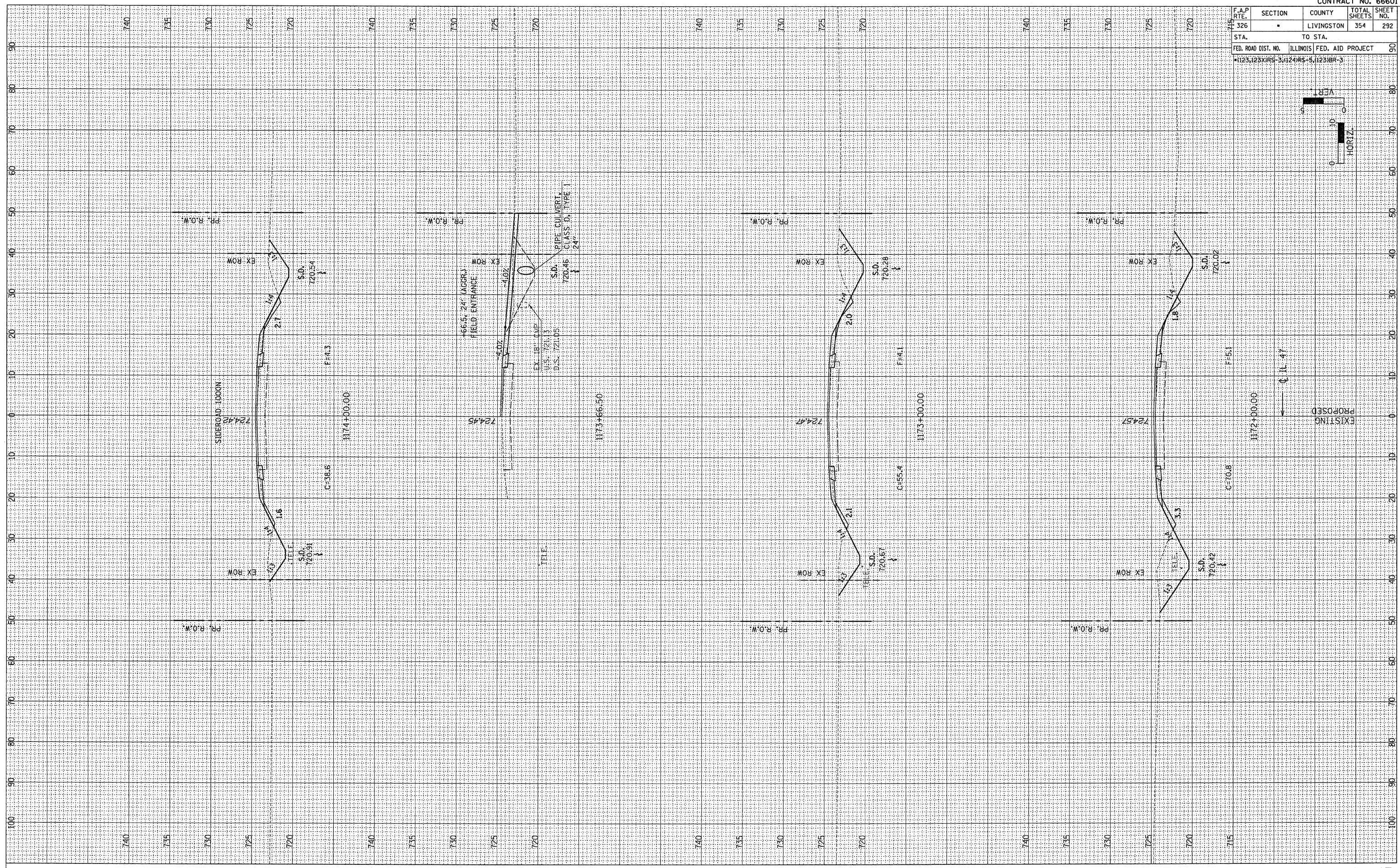
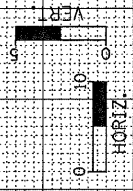


F.A.P. RTE.	SECTION	COUNTY	TOTAL SHEETS	SHEET NO.
326	*	LIVINGSTON	354	292
STA. 715		TO STA. 720		
FED. ROAD DIST. NO.		ILLINOIS	FED. AID PROJECT	
*1123,123XIR5-3,(124)R5-5,(123)BR-3				



FINAL SURVEY	DATE
BY	
REVISIONS	
NO.	
AREAS CHECKED	
AREAS CHECKED	

ORIGINAL SURVEY	DATE
BY	
REVISIONS	
NO.	
AREAS CHECKED	
AREAS CHECKED	