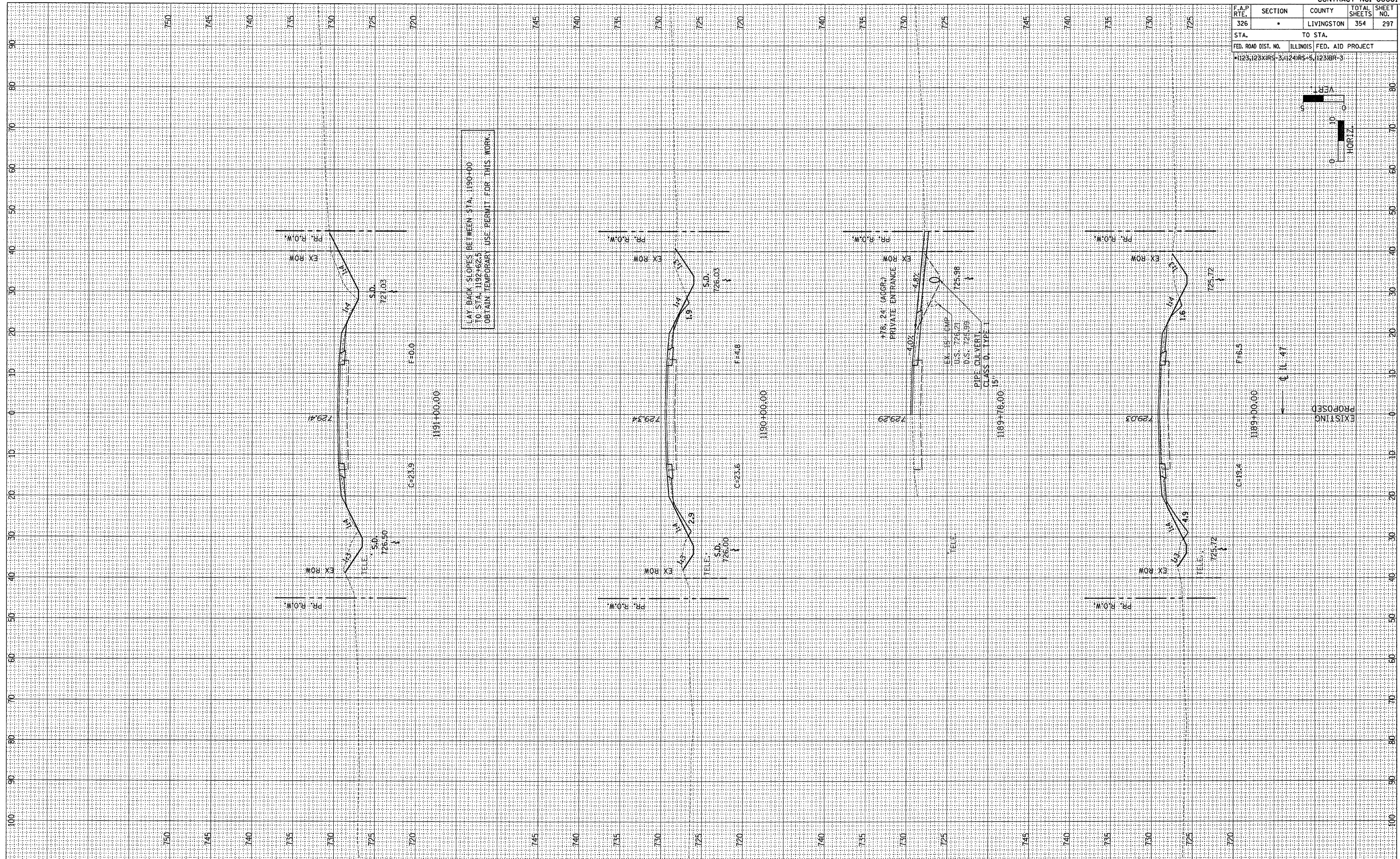
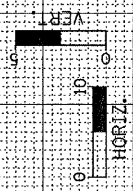


F.A.P. RTE. 326	SECTION •	COUNTY LIVINGSTON	TOTAL SHEETS 354	SHEET NO. 297
STA.		TO STA.		
FED. ROAD DIST. NO.		ILLINOIS FED. AID PROJECT		
•1123128XIRS-3, 4, 24, 45-5, 1231BR-3				



LAY BACK SLOPES BETWEEN STA. 1190+00
TO STA. 1192+62.5
OBTAIN TEMPORARY USE PERMIT FOR THIS WORK

EXISTING
PROPOSED

FINAL SURVEY	BY	DATE
SUBMITTED		
NOTE BOOK		
AREAS CHECKED		
NO.		

ORIGINAL SURVEY	BY	DATE
REVISIONS		
NOTE BOOK		
AREAS CHECKED		
NO.		