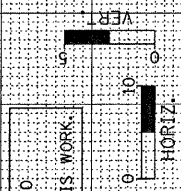
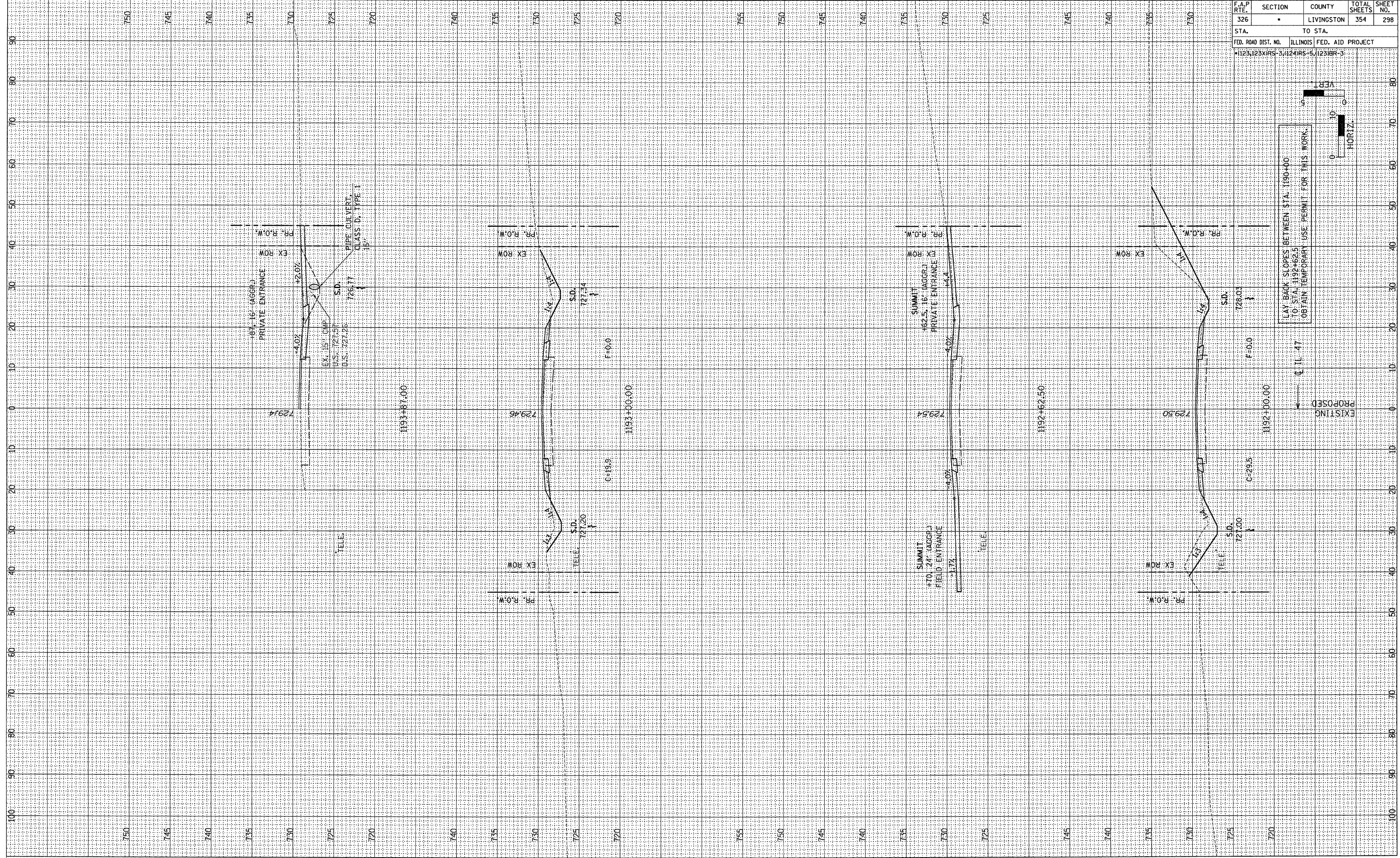


F.A.P. RTE. 326	SECTION •	COUNTY LIVINGSTON	TOTAL SHEETS 354	SHEET NO. 298
STA. TO STA.		FED. ROAD DIST. NO. ILLINOIS FED. AID PROJECT		
•1123+123XIRS-3, 1124+IRS-5, 1123+IR-3				



LAY BACK SLOPES BETWEEN STA. 1190+00 TO STA. 1192+62.5 OBTAIN TEMPORARY USE PERMIT FOR THIS WORK.

PROPOSED
EXISTING

C.L. 47

FINAL SURVEY	BY	DATE
SURVED		
TEMPLATE		
AREAS CHECKED		

ORIGINAL SURVEY	BY	DATE
PLOTTED		
TEMPLATE		
AREAS CHECKED		