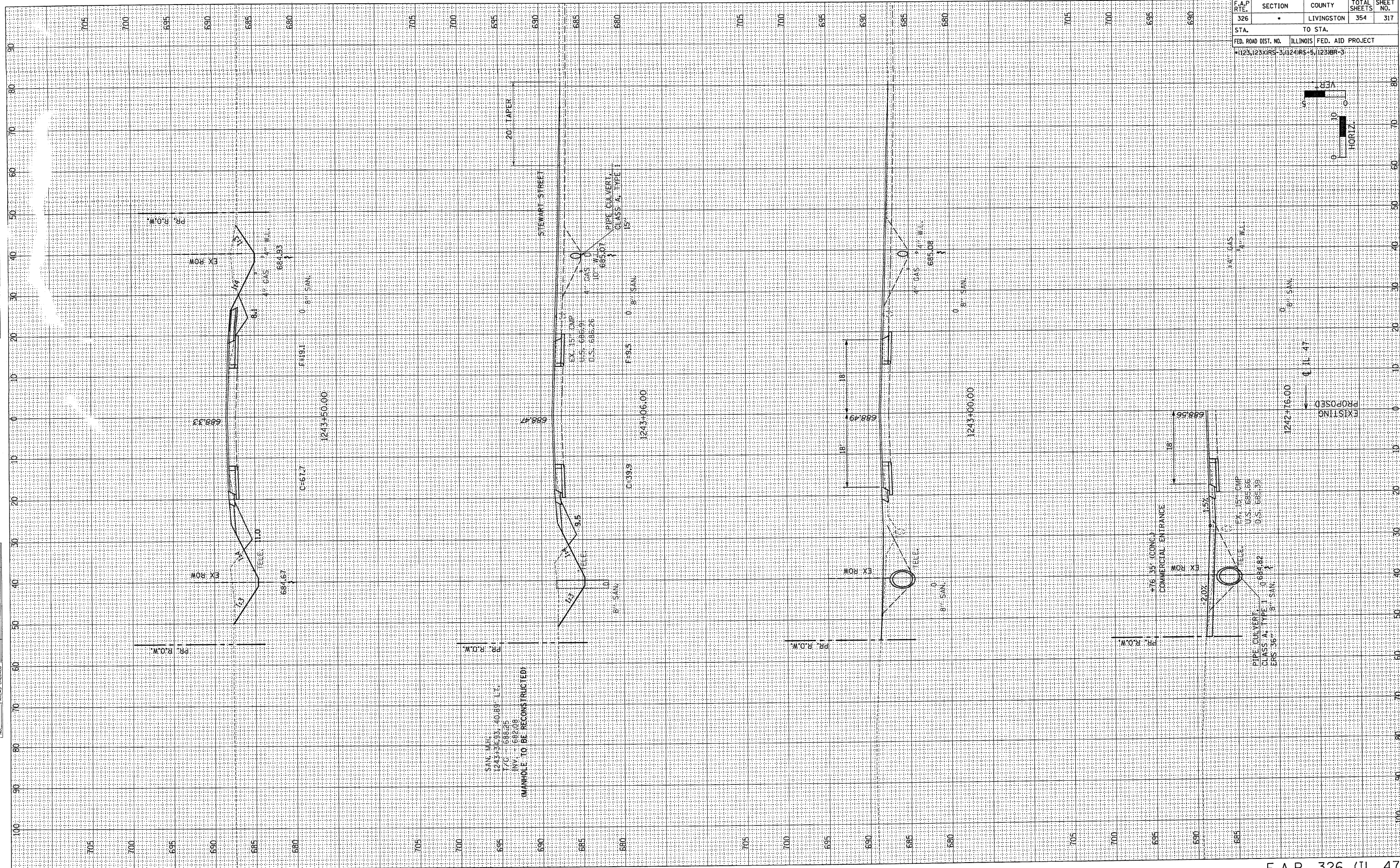


F.A.P. RTE.	SECTION	COUNTY	TOTAL SHEETS	SHEET NO.
326	-	LIVINGSTON	354	317
STA.		TO STA.		
FED. ROAD DIST. NO.		ILLINOIS FED. AID PROJECT		
*123,123XRS-3,(124)RS-5,(123)BR-3				

FIN.	DATE
SURVEY	
NOTE BO.	
NO.	

BY	DATE
ST. EYED	
FLOTTED	
REPLATE	
NOTE BOOK	
AREAS CHECKED	
NO.	



SAN. MAN.
 1243+50.33, 40.89' L.T.
 7'6\"/>

(MANHOLE TO BE RECONSTRUCTED)

