



Illinois Department of Transportation

2300 South Dirksen Parkway / Springfield, Illinois / 62764

February 29, 2008

SUBJECT: FAP Route 786 (IL 170)
Project BRF-0786 (008)
Section (109)BR
LaSalle County
Contract No. 66607
Item No. 1X, March 7, 2008 Letting
Addendum A

NOTICE TO PROSPECTIVE BIDDERS:

Attached is an addendum to the plans or proposal. This addendum involves revised and/or added material.

1. Revised page 3, 7 and 8 of the Schedule of Prices.
2. Revised page iii of the Table of Contents to the Special Provisions.
3. Added pages 124 – 172 to the Special Provisions.
4. Revised sheets 1, 3, 4, 202, 231, 271 – 273 and 289 of the Plans.
5. Added sheet 234A to the Plans.

Prime contractors must utilize the enclosed material when preparing their bid and must include any Schedule of Prices changes in their bidding proposal.

Bidders using computer-generated bids are cautioned to reflect any and all Schedule of Prices changes, if involved, into their computer programs.

Very truly yours,

Eric E. Harm
Interim Bureau Chief
Bureau of Design and Environment

A handwritten signature in cursive script, reading "Ted B. Walschleger P.E." with a small "P.E." to the right.

By: Ted B. Walschleger, P. E.
Engineer of Project Management

cc: George F. Ryan, Region 2, District 3; Roger Driskell; R. E. Anderson;
Estimates

TBW:RS:jc

ILLINOIS DEPARTMENT OF TRANSPORTATION
SCHEDULE OF PRICES
CONTRACT
NUMBER -

66607

State Job # - C-93-003-06
PPS NBR - 3-77400-100
County Name - LASALLE- -
Code - 99 - -
District - 3 - -
Section Number - (109)BR

Project Number
BRF-0786/008/

Route
FAP 786

Item Number	Pay Item Description	Unit of Measure	Quantity	x	Unit Price	=	Total Price
20700110	POROUS GRAN EMBANK	TON	78.000				
* 20700400	POROUS GRAN EMB SPEC	CU YD	389.000				
20800150	TRENCH BACKFILL	CU YD	1,038.000				
21001000	GEOTECH FAB F/GR STAB	SQ YD	18,568.000				
21101505	TOPSOIL EXC & PLAC	CU YD	2,560.000				
21101615	TOPSOIL F & P 4	SQ YD	46,719.000				
25000100	SEEDING CL 1	ACRE	0.800				
25000210	SEEDING CL 2A	ACRE	4.000				
25000300	SEEDING CL 3	ACRE	1.200				
25000312	SEEDING CL 4A	ACRE	7.900				
25000322	SEEDING CL 5A	ACRE	7.900				
25000400	NITROGEN FERT NUTR	POUND	1,976.000				
25000500	PHOSPHORUS FERT NUTR	POUND	1,976.000				
25000600	POTASSIUM FERT NUTR	POUND	1,976.000				
25100115	MULCH METHOD 2	ACRE	8.500				
* REVISED : FEBRUARY 27, 2008							

ILLINOIS DEPARTMENT OF TRANSPORTATION
 SCHEDULE OF PRICES
 CONTRACT
 NUMBER -

66607

State Job # - C-93-003-06
 PPS NBR - 3-77400-100
 County Name - LASALLE- -
 Code - 99 - -
 District - 3 - -
 Section Number - (109)BR

Project Number
 BRF-0786/008/

Route
 FAP 786

Item Number	Pay Item Description	Unit of Measure	Quantity	x	Unit Price	=	Total Price
50102400	CONC REM	CU YD	0.200				
50105220	PIPE CULVERT REMOV	FOOT	95.000				
50157300	PROTECTIVE SHIELD	SQ YD	482.000				
50200100	STRUCTURE EXCAVATION	CU YD	1,910.000				
50200300	COFFERDAM EXCAVATION	CU YD	1,195.000				
50200400	ROCK EXC STRUCT	CU YD	288.000				
50200800	COFFERDAM PIER 3	EACH	1.000				
50200900	COFFERDAM PIER 4	EACH	1.000				
50300225	CONC STRUCT	CU YD	3,278.000				
* 50300255	CONC SUP-STR	CU YD	3,069.000				
50300260	BR DECK GROOVING	SQ YD	5,761.000				
* 50300280	CONCRETE ENCASEMENT	CU YD	8.000				
50300300	PROTECTIVE COAT	SQ YD	7,539.000				
50500105	F & E STRUCT STEEL	L SUM	1.000				
50500505	STUD SHEAR CONNECTORS	EACH	16,731.000				
			* REVISED : FEBRUARY 27, 2008				

ILLINOIS DEPARTMENT OF TRANSPORTATION
 SCHEDULE OF PRICES
 CONTRACT
 NUMBER -

66607

State Job # - C-93-003-06
 PPS NBR - 3-77400-100
 County Name - LASALLE- -
 Code - 99 - -
 District - 3 - -
 Section Number - (109)BR

Project Number
 BRF-0786/008/

Route
 FAP 786

Item Number	Pay Item Description	Unit of Measure	Quantity	x	Unit Price	=	Total Price
50501140	STRUCT STEEL REPAIR	L SUM	1.000				
50800105	REINFORCEMENT BARS	POUND	53,680.000				
* 50800205	REINF BARS, EPOXY CTD	POUND	956,990.000				
50800515	BAR SPLICERS	EACH	84.000				
50901720	BICYCLE RAILING	FOOT	1,732.000				
50901750	PARAPET RAILING	FOOT	1,762.000				
51100100	SLOPE WALL 4	SQ YD	475.000				
51201700	FUR STL PILE HP12X74	FOOT	5,108.000				
51202305	DRIVING PILES	FOOT	5,108.000				
* 51203700	TEST PILE ST HP12X74	EACH	9.000				
51204650	PILE SHOES	EACH	150.000				
51500100	NAME PLATES	EACH	1.000				
51604000	DRILLED SHAFT IN ROCK	CU YD	230.000				
52000110	PREF JT STRIP SEAL	FOOT	139.000				
52000212	FINGER PLT EXP JT 4	FOOT	38.000				
* REVISED : FEBRUARY 27, 2008							

SEEDING (BDE)	95
SELF-CONSOLIDATING CONCRETE FOR CAST-IN-PLACE CONSTRUCTION (BDE).....	97
SELF-CONSOLIDATING CONCRETE FOR PRECAST PRODUCTS (BDE).....	101
SILT FILTER FENCE (BDE)	102
STEEL PLATE BEAM GUARDRAIL (BDE)	102
STONE GRADATION TESTING (BDE).....	102
SUBCONTRACTOR MOBILIZATION PAYMENTS (BDE)	103
TEMPORARY EROSION CONTROL (BDE)	103
THERMOPLASTIC PAVEMENT MARKINGS (BDE)	104
TRAINING SPECIAL PROVISIONS	105
VARIABLY SPACED TINING (BDE).....	107
WATER BLASTER WITH VACUUM RECOVERY (BDE).....	108
WORKING DAYS (BDE)	108
BITUMINOUS MATERIALS COST ADJUSTMENTS (BDE) (RETURN FORM WITH BID).....	109
STEEL COST ADJUSTMENT (BDE) (RETURN FORM WITH BID)	112
STORM WATER POLLUTION PREVENTION PLAN.....	116
SLIPFORM PARAPET	124
REMOVAL OF EXISTING STRUCTURES	128
COAST GUARD	129
404 PERMIT APPLICATION	137

Revised 02/29/2008

SLIPFORM PARAPET
Effective: June 1, 2007

The following shall be added to the end of Article 503.16(b) of the Standard Specifications.

(3) Slipforming parapets. Unless otherwise prohibited on the plans or when conduit is longitudinally embedded in the parapet(s), at the option of the Contractor, concrete parapets on bridge decks may be constructed by slipforming in lieu of the conventional forming methods. The slipform machine shall have automatic horizontal and vertical grade control and be approved by the Engineer.

The concrete mix design may combine two or more coarse aggregate sizes, consisting of CA-7, CA-11, CA-13, CA-14, and CA-16, provided a CA-7 or CA-11 is included in the blend in a proportion approved by the Engineer.

The slipform machine speed shall not exceed 3 ft (0.9 m) per minute. Any section of parapet placed with the slipform machine moving in excess of the maximum allowed speed will be rejected. Any time the speed of the machine drops below 0.5 ft (150 mm) per minute will be considered a stoppage of the slipforming operation, portions of parapet placed with three or more intermittent stoppages within any 15 ft (4.6 m) length will be rejected. The contractor shall schedule concrete delivery to maintain a uniform delivery rate of concrete into the slipform machine. If delivery of concrete from the truck into the slipforming machine is interrupted by more than 15 minutes, the portion of the wall within the limits of the slipform machine will be rejected. Any portion of the parapet where the slipforming operation is interrupted or stopped within the 15 minute window may be subject to coring to verify acceptance.

If the Contractor elects to slipform, the parapet cross-sectional area and reinforcement bar clearances shall be revised according to the detail for the Concrete Parapet Slipforming Option.

The Contractor may propose supplemental reinforcement stiffening details subject to the approval of the Engineer.

The use of cast-in-place anchorage devices for attaching appurtenances and/or railings to the parapets will not be allowed in conjunction with slipforming of parapets. Alternates means for making these attachments shall be as detailed on the plans or as approved by the Engineer.

All reinforcement bar intersections within the parapet cross section shall be 100 percent tied to maintain rigidity during concrete placement. At pre-planned sawcut joints in the parapet, Glass Fiber Reinforced Polymer (GFRP) reinforcement shall be used to maintain the rigidity of the reinforcement cage across the proposed joints as detail for the Concrete Parapet Slipforming Option.

Glass Fiber Reinforced Polymer (GFRP) reinforcement shall be subject to approval by the Engineer. Other non-ferrous reinforcement may be proposed for use but shall be subject to approval by the Engineer.

The contractor may use additional stiffening reinforcement bars to prevent movement of the reinforcement cage subject to approval by the Engineer. Clearances for these bars shall be the same as shown for the required bars and these bars shall be epoxy coated. If the additional reinforcement is used, it shall be at no additional cost to the Department.

For projects with plan details specifying parapet joints spaced greater than 20 ft (6 m) apart, additional sawcut joints, spaced between 10 ft (3 m) and 20 ft (6 m), shall be placed as directed by the Engineer. The horizontal reinforcement extending through the proposed joints shall be precut to provide a minimum of 4 in. (100 mm) gap, centered over the joint, between rebar ends. The ends of the reinforcement shall be repaired according to Article 508.05.

After the slipform machine has been set to proper grade and prior to concrete placement, the clearance between the slipform machine inside faces and reinforcement bars shall be checked during a dry run by the Contractor in the presence of the Engineer. The dry run shall not begin until the entire reinforcing cage has been tied and the Engineer has verified and approved the placement and tying of the reinforcing bars. Any reinforcement bars found to be out of place by more than ½ in. (13 mm), or any dimensions between bars differing from the plans by more than ½ in. (13 mm) shall be re-tied to the plan dimensions.

During the dry run and in the presence of the Engineer, the Contractor shall check the clearance of the reinforcement bars from the inside faces of the slipform mold. In all locations, the Contractor shall ensure the reinforcement bars have the minimum cover distance shown on the plans. This dry run check shall be made for the full distance that is anticipated to be placed in the subsequent pour. Reinforcement bars found to have less than the minimum clearance shall be adjusted and the dry run will be performed again, at least in any locations that have been readjusted.

For parapets adjacent to the watertable, the contractor shall, for the duration of the construction and curing of the parapet, provide and maintain an inspection platform along the back face of the parapet. The inspection platform shall be rigidly attached to the bridge superstructure and be of such design to allow ready movement of inspection personnel along the entire length of the bridge.

The aluminum cracker plates as detailed in the plans shall be securely tied in place and shall be coated or otherwise treated to minimize their potential reaction with wet concrete. In lieu of chamfer strips at horizontal and vertical edges, radii may be used. Prior to slipforming, the Contractor shall verify proper operation of the vibrators using a mechanical measuring device subject to approval by the Engineer.

The top portion of the joint shall be sawcut as shown in Detail for the Concrete Parapet Slipforming Option. Sawing of the joints shall commence as soon as the concrete has hardened sufficiently to permit sawing without excessive raveling. All joints shall be sawed to the full thickness before uncontrolled shrinkage cracking takes place but no later than 8 hours after concrete placement. The sawcut shall be approximately 3/8 in. (10 mm) wide and shall be performed with a power circular concrete saw. The joints shall be sealed with an approved polyurethane sealant, conforming to ASTM C 920, Type S, Grade NS, Class 25, Use T, to a minimum depth of 1/2 in. (12 mm), with surface preparation and installation according to the manufacturer's written instructions. Cork, hemp or other compressible material may be used as a backer. The sawcut will not require chamfered edges.

Ends of the parapet shall be formed and the forms securely braced. When slipforming of parapets with cross sectional discontinuities such as light standards, junction boxes or other embedded appurtenances except for name plates, is allowed, the parapet shall be formed for a minimum distance of 4 ft (1.2 m) on each side of the discontinuity.

For acceptance and rejection purposes a parapet section shall be defined as the length of parapet between adjacent vertical parapet joints.

The maximum variance of actual to proposed longitudinal alignment shall not exceed $\pm 3/4$ in. (20 mm) with no more than 1/4 inch in 10 ft (6 mm in 3 m). Notwithstanding this tolerance, abrupt variance in actual alignment of 1/2 inch in 10 ft (13 mm in 3 m) will be cause for rejection of the parapet section.

In addition, all surfaces shall be checked with a 10 ft (3 m) straight edge furnished and used by the Contractor as the concrete is extruded from the slipform mold. Continued variations in the barrier surface exceeding 1/4 inch in 10 ft (6 mm in 3 m) will not be permitted and remedial action shall immediately be taken to correct the problem.

The use of equipment or methods which result in dimensions outside the tolerance limits shall be discontinued. Parapet sections having dimensions outside the tolerance limits will be rejected.

Any visible indication that less than specified cover of concrete over the reinforcing bars has been obtained, or of any cracking, tearing or honeycombing of the plastic concrete, or any location showing diagonal or horizontal cracking will be cause for rejection of the parapet section in which they are found.

The vertical surfaces at the base of the barrier within 3 in. (75 mm) of the deck surface shall be trowelled true after passage of the slipform machine. Any deformations or bulges remaining after the initial set shall be removed by grinding after the concrete has hardened. Hand finishing of minor sporadic surface defects may be allowed at the discretion of the Engineer.

After the parapet has been finished and within 30 minutes of discharge from the slipform paving machine, the parapet surface shall be sealed with a linseed oil emulsion curing compound according to Articles 1022.01(d). The sealer shall be applied with a mechanical sprayer according to Article 1101.09(b). Two separate applications, applied at least 1 minute apart, each at the rate of 1 gallon / 250 sq ft (0.16 L / sq m) will be required. At locations where the coating is discontinuous or where pin holes show or where the coating is damaged, an additional coating of curing compound shall be applied at the above specified rate.

Slipformed parapets shall be cured according to either Article 1020.13(a)(3) or Article 1020.13(a)(5). For either method, a soaker hose shall be placed on the top surface of the parapet, and the curing material kept wet with a continuous supply of water for the entire curing period. The cotton mats or burlap covering shall be held in place with brackets or other method approved by the Engineer.

A maximum of three random 4 in. (100 mm) diameter cores per 100 ft (30 m) of parapet shall be taken as directed by the Engineer, but no less than three random cores shall be taken for each parapet pour. Separate parapets poured on the same date shall be considered separate pours. Random cores will not be measured for payment.

The Engineer will mark additional locations for cores where, in the sole opinion of the Engineer, the quality of the slipformed parapet is suspect.

Any cores showing voids of any size adjacent to the reinforcement bars, or showing voids not adjacent to reinforcement bars of 1/4 square inch (160 square millimeters) in area or more, or showing signs of segregation, or showing signs of cracking shall be considered failures and the parapet section from which it was taken will be rejected.

Rejected parapet sections shall be removed and replaced for the full depth cross-section of the parapet. The minimum length of parapet removed and replaced shall be 3 ft (1 m). Additional cores may be required to determine the longitudinal extent of removal and replacement if it can not be determined and agreed upon by other means (i.e. visual, sounding, non-destructive testing, etc.).

Any parapet section with more than one half of its length rejected or with remaining segments less than 10 ft (3 m) in length shall be removed and replaced in its entirety.

If reinforcement bars are damaged during the removal and replacement, additional removal and replacement shall be done, as necessary, to ensure minimum splice length of replacement bars. Any damage to epoxy coating of bars shall be repaired according to Article 508.05.

All core holes will be filled with a non-shrink grout meeting the requirements of Section 1024.

Basis of Payment. When the contractor, at his/her option, constructs the parapet using slipforming methods, no adjustment in the quantities for Concrete Superstructures and Reinforcement Bars, Epoxy Coated to accommodate this option will be allowed. Compensation under the contract bid items for Concrete Superstructures and Reinforcement Bars, Epoxy Coated shall cover the cost of all work required for the construction of the parapet and for any additional costs of work or materials associated with slipforming methods.

REMOVAL OF EXISTING STRUCTURES

REMOVAL OF EXISTING STRUCTURES

Description. This work shall be performed in accordance with Section 501 of the Standard Specifications and as modified herein. All work, including any temporary works for dewatering such as cofferdams if required, shall be included in the cost of REMOVAL OF EXISTING STRUCTURES.

Included in this work shall be the removal of the existing approach slabs and the thirteen span bridge consisting of five steel simple spans to the north of four through-truss spans and then four steel simple spans to the south of the through truss spans. The bridge roadway width is approximately 23'-11" wide and the structure is approximately 1510'-4" long. The substructure consists of pile bent abutments with the north and south approach spans being supported by pile bents with cast-in-place pile caps on pre-cast concrete piles. The through-truss spans are supported by tapered concrete columns rising from a solid stem base supported by a spread footing founded on the sandstone rock.

The two existing through-truss river piers (denoted on the existing plans as piers 2 and 3) will be removed to the top of the spread footing and the remaining piers and abutments will be demolished to 24 inches below the mudline of the overbanks of the river.

Concrete, steel materials and other appurtenances removed from any part of the existing structure shall be disposed of offsite, in accordance with Article 202.03 of the Standard Specifications.

Method of Measurement. This work shall be measured in accordance with Section 501 of the Standard Specifications.

Basis of Payment. This work shall be paid for at the contract unit price per each for REMOVAL OF EXISTING STRUCTURES at the location designated on the plans.

COAST GUARD



Commander
Eighth Coast Guard District

1222 Spruce Street
St. Louis, MO 63103-2832
Staff Symbol: dwb
Phone: (314)269-2380
Fax: (314)269-2737
Email: peter.j.sambor@uscg.mil

16591.1/252.71 ILWW
14 Feb 2008

MEMORANDUM

From: Roger K. Wiebusch
CGD EIGHT (dwb)

Reply to: P. Sambor
Attn of: 314-269-2380

To: d *After Acting 2/20/08*
Thru: (1) dw *in Shore, SAOT 2/15/08*
(2) dcs *After*

Subj: PERMIT APPLICATION FOR PROPOSED SENECA BRIDGE REPLACEMENT,
ACROSS THE ILLINOIS WATERWAY, MILE 252.71, NEAR SENECA, LASALLE
COUNTY, ILLINOIS, P(04-08-08)

1. The Illinois Department of Transportation has submitted for approval of the Commandant, U.S. Coast Guard the location and plans for a fixed highway bridge across the Illinois Waterway, mile 252.71, near Seneca, La Salle County, Illinois. The proposed bridge will replace the existing bridge. No alternate bridge designs are proposed.
2. The Illinois Waterway is a navigable waterway of the United States in its entirety, from the headwaters of the Chicago River near Lake Michigan to its mouth where it empties into the Upper Mississippi River at Grafton, Illinois.
3. The Federal Highway Administration (FHWA) is the lead federal agency for satisfying requirements of the National Environmental Policy Act and other federal environmental control laws. FHWA approved a Categorical Exclusion for the project on October 29, 2007. The Coast Guard approved a Categorical Exclusion for the project on January 15, 2008.
4. Coast Guard Public Notice No. D8-DWB-777 was issued on October 31, 2007. Adjacent property owners were notified. A USFWS letter commented that no significant adverse effects on fish and wildlife are expected to result from the proposed activity and USFWS had no objection to the issuance of the Permit.
5. The permit, if issued, should contain the special conditions listed in Part VI of the Findings of Fact.
6. The proposed bridge will provide for the reasonable needs of present and prospective navigation with no significant impacts on the environment.

Subj: PERMIT APPLICATION FOR PROPOSED SENECA BRIDGE REPLACEMENT, ACROSS THE ILLINOIS WATERWAY, MILE 252.71, NEAR SENECA, LASALLE COUNTY, ILLINOIS, P(04-08-08) 16591.1/252.71 ILWW
14 Feb 2008

7. The signature of the District Commander or Acting District Commander is required at the end of the Permit for the location and plan sheets 1, 2, 3 and 4 (of 4) dated March 20, 2007.

8. Expeditious handling is requested.

#

- Enclosures:
- (1) USCG Permit (04-08-08)
 - (2) Permit Drawings: sheets 1, 2, 3 and 4 (of 4) dtd 20 Mar 2007
 - (3) Permit Application dtd 4 Jun 2007
 - (4) Permit for existing bridge issued by Secretary of War on 15 Apr 1932
 - (5) Water Quality Certification and EPA notification
 - a. IL Dept. of Environmental Protection WQC dtd 17 Dec 2007
 - b. EPA Region 5 notification ltr dtd 28 Jan 2008
 - (6) Findings of Fact dtd 28 Jan 2008
 - (7) Environmental documents
 - (a) FHWA CE Determination dated 29 Oct 2007
 - (b) USCG CE Determination dtd 15 Jan 2008
 - (c) Section 106 Concurrence dtd 27 May 2004
 - (8) Public Notice (D8-DWB-777) dtd 31 Oct 2007, w/ mailing list
 - (9) Local Notice to Mariners 45-07 dtd 7 Nov 2007
 - (10) Other correspondence
 - (a) Pier placement letter to IDOT & Contractor dtd 17 Jul 2003
 - (b) Navigation clearance letter to Marine Industry dtd 17 Jul 2003
 - (c) Marine Industry navigational input dtd 17 Oct, 2003
 - (d) Navigational clearance letter to IDOT dtd 13 Nov 2003
 - (e) USACE/USCG NAVD correspondence dtd 14 Jun 2007
 - (f) Permit Application acknowledgement letter to IDOT dtd 18 Jul 2007
 - (g) Request for additional information letter to IDOT dtd 27 Jul 2007
 - (h) Repeat request for additional information to IDOT dtd 12 Sep 2007
 - (i) Follow-up information request (providing further clarification and documentation examples) letter to IDOT dtd 5 Oct 2007
 - (j) Teleconference meeting minutes dtd 10 Oct 2007
 - (k) IDOT/USCG/FHWA meeting minutes dtd 23 Oct 2007
 - (l) End of Public Notice/ WQC request letter to IDOT dtd 3 Dec 2007
 - (m) USFWS Public Notice response letter dtd 10 Jan 2008
 - (n) Illinois Waterway commerce statistics



BRIDGE PERMIT

04-08-08

WHEREAS by Title V of an act of Congress approved August 2, 1946, entitled "General Bridge Act of 1946," as amended (33 U.S.C. 525-533), the consent of Congress was granted for the construction, maintenance and operation of bridges and approaches thereto over the navigable waters of the United States;

AND WHEREAS the Secretary of Homeland Security has delegated the authority of Section 502(b) of that act to the Commandant, U. S. Coast Guard by Department of Homeland Security Delegation Number: 0170.1;

AND WHEREAS before construction is commenced, the Commandant must approve the location and plans of any such bridge and may impose any specific conditions relating to the construction, maintenance and operation of the structure deemed necessary in the interest of public navigation, such conditions to have the force of law;

AND WHEREAS the Commandant of the Coast Guard has further delegated to the District Commanders, by Section 1.01-60(b) of Title 33, Code of Federal Regulations, authority to issue permits for the construction, reconstruction, or alteration of bridges across navigable waters of the United States;

AND WHEREAS the - **STATE OF ILLINOIS** - has submitted for approval the location and plans of a bridge to be constructed across the Illinois Waterway near Seneca Township, Illinois;

NOW THEREFORE, This is to certify that the location and plans dated 20 March 2007 are hereby approved by the Commander, Eighth Coast Guard District, subject to the following conditions:

1. No deviation from the approved plans may be made either before or after completion of the structure unless the modification of said plans has previously been submitted to and received the approval of the District Commander.
2. The construction of falsework, cofferdams or other obstructions, if required, and the scheme for constructing the bridge shall be in accordance with plans submitted to and approved by the District Commander prior to construction of the bridge. All work shall be so conducted that the free navigation of the waterway is not unreasonably interfered with and the present navigable depths are not impaired. Timely notice of any and all events that may affect navigation shall be given to the District Commander during construction of the bridge. The channel or channels

Continuation Sheet Bridge across the Illinois Waterway,
near Seneca, Illinois

BRIDGE PERMIT

04-08-08

through the structure shall be promptly cleared of all obstructions placed therein or caused by the construction of the bridge to the satisfaction of the District Commander, when in the judgment of the District Commander the construction work has reached a point where such action should be taken, but in no case later than 90 days after the bridge has been opened to traffic.

3. Issuance of this permit does not relieve the permittee of the obligation or responsibility for compliance with the provisions of any other law or regulation as may be under the jurisdiction of any federal, state or local authority having cognizance of any aspect of the location, construction or maintenance of said bridge.

4. A bridge fendering system shall be installed and maintained in good condition by and at the expense of the owner of the bridge when so required by the District Commander. Said installation and maintenance shall be for the safety of navigation and be in accordance with plans submitted to and approved by the District Commander prior to its construction.

5. Clearance gauges shall be installed and maintained in a good and legible condition by and at the expense of the owner of the bridge when so required by the District Commander. The type of gauges and the locations in which they are to be installed will be submitted to the District Commander for approval.

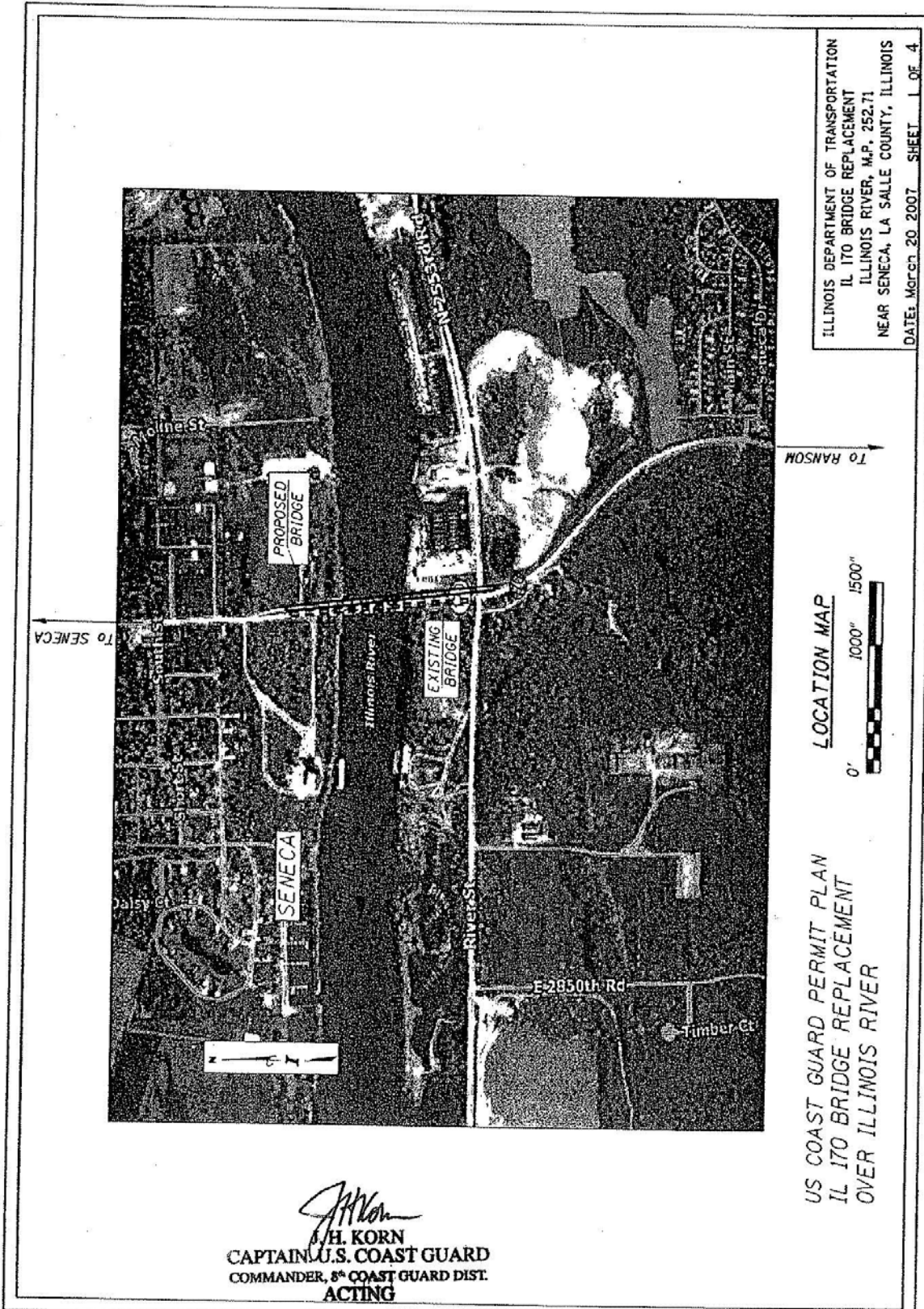
6. All parts of the existing to-be-replaced, Seneca Bridge across the Illinois Waterway, mile 252.7, not utilized in the new bridge which are located within the waterway shall be removed to an elevation of 461.00 feet m.s.l., a minimum of three feet below the natural bottom of the waterway. All other parts shall be removed down to or below the natural ground line. The waterway shall be cleared to the satisfaction of the District Commander. A period of 90 days subsequent to the opening to traffic of the new bridge, mile 252.71, will be allowed for such removal and clearance. The proposed method and schedule for removal of the existing bridge shall be submitted to the District Commander for approval prior to commencing such removal.

7. When the proposed bridge is no longer used for transportation purposes, it shall be removed in its entirety or to an elevation deemed appropriate by the District Commander and the waterway cleared to the satisfaction of the District Commander. Such removal and clearance shall be completed by and at the expense of the owner of the bridge upon due notice from the District Commander.

8. The approval hereby granted shall cease and be null and void unless construction of the bridge is commenced within three years and completed within five years after the date of this permit.

 2/20/08

J. H. KORN
CAPTAIN, U.S. COAST GUARD
COMMANDER, 8th COAST GUARD DIST.
ACTING

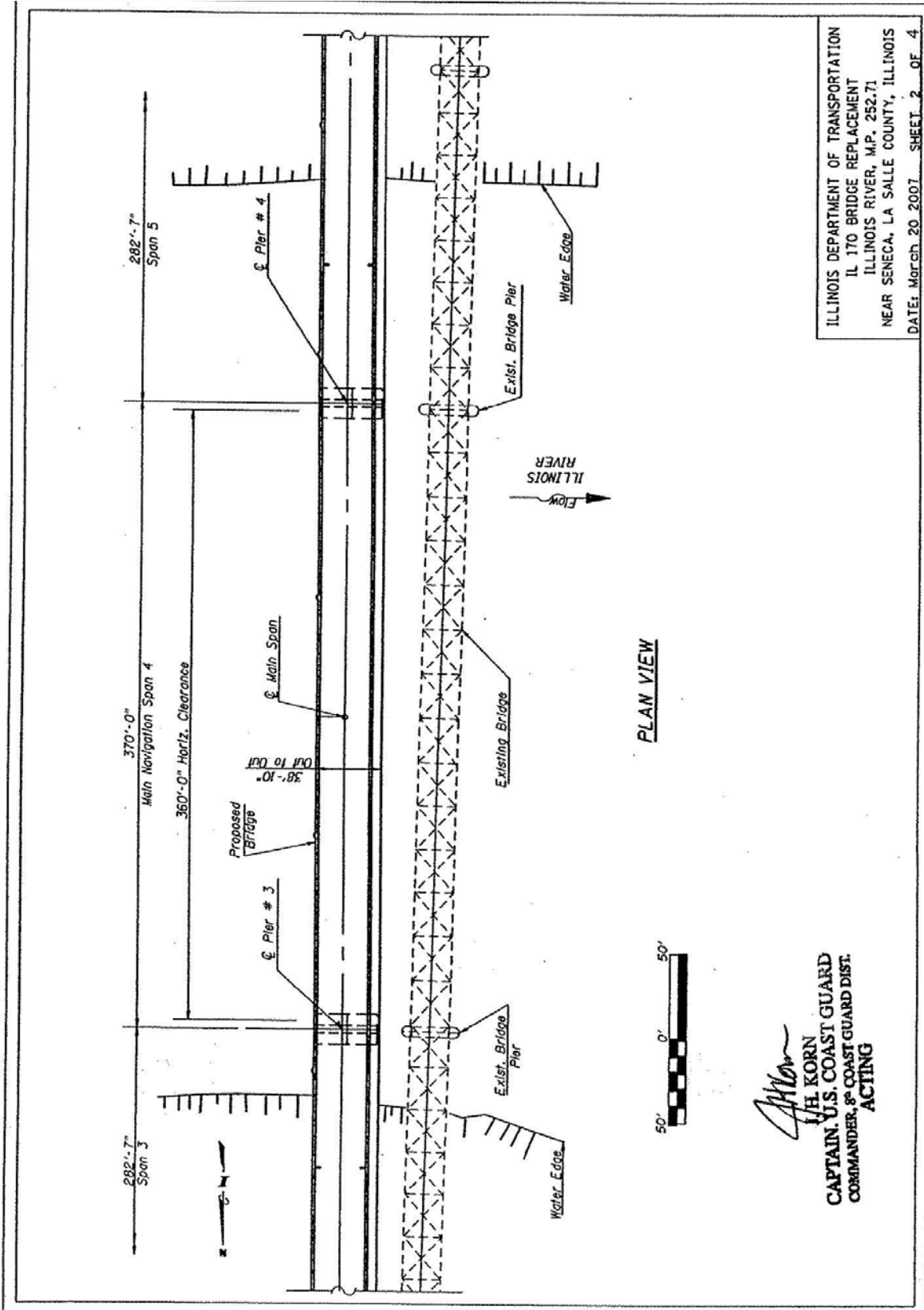


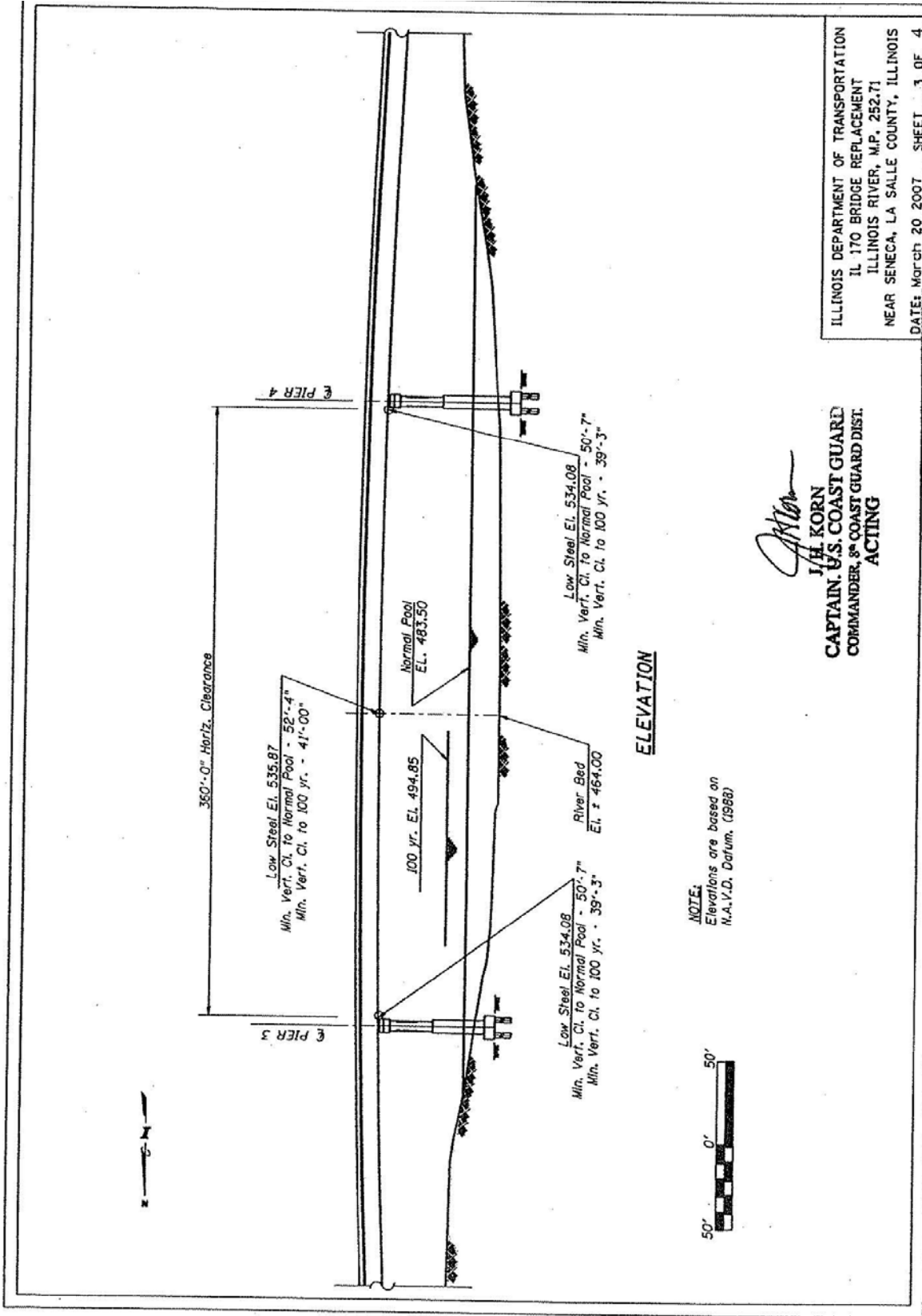
ILLINOIS DEPARTMENT OF TRANSPORTATION
 IL 170 BRIDGE REPLACEMENT
 ILLINOIS RIVER, M.P. 252.71
 NEAR SENECA, LA SALLE COUNTY, ILLINOIS
 DATE: Mar. 20, 2007 SHEET 1 OF 4

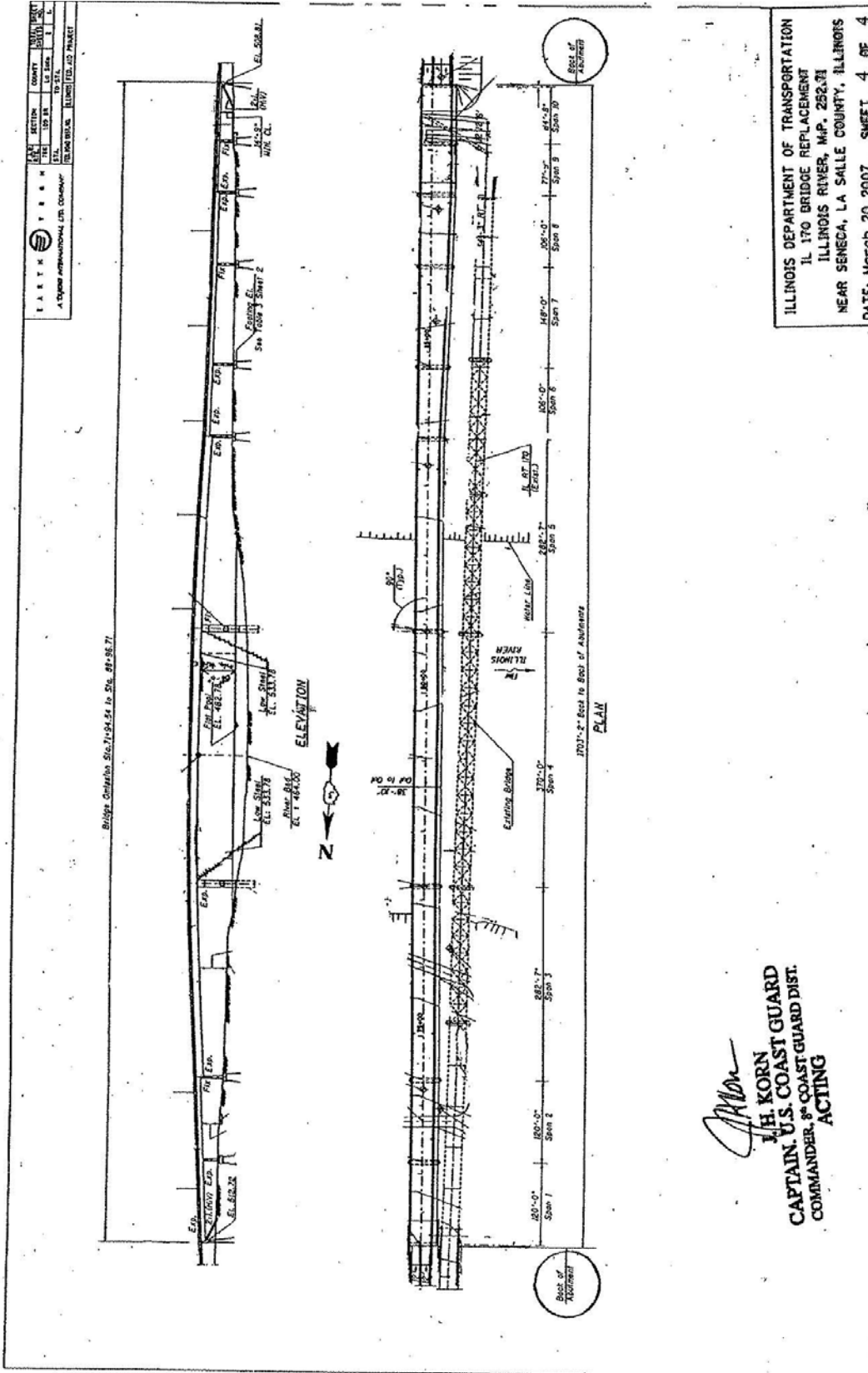
LOCATION MAP
 0' 1000' 1500'

US COAST GUARD PERMIT PLAN
 IL 170 BRIDGE REPLACEMENT
 OVER ILLINOIS RIVER

JH Korn
 H. KORN
 CAPTAIN U.S. COAST GUARD
 COMMANDER, 8th COAST GUARD DIST.
 ACTING







DATE	DESCRIPTION	BY	CHECKED
10/10/07	REVISED
10/10/07	REVISED
10/10/07	REVISED
10/10/07	REVISED

ILLINOIS DEPARTMENT OF TRANSPORTATION
 IL 170 BRIDGE REPLACEMENT
 ILLINOIS RIVER, MP. 252.81
 NEAR SENECA, LA SALLE COUNTY, ILLINOIS
 DATE: March 20, 2007 SHEET 4 OF 4

J. H. Korn
J. H. KORN
CAPTAIN, U.S. COAST GUARD
COMMANDER, 8th COAST GUARD DIST.
ACTING

...WORK BY 050-324518;1.00 07/29/2005 3:37:59 PM

404 PERMIT APPLICATION



Illinois Department of Transportation **COPY**

Division of Highways / Region 2 / District 3
700 East Norris Drive / Ottawa, Illinois / 61350-0697
Telephone 815/434-6131

May 1, 2007

Mr. Dan Johnson, P.E., Chief, Regulatory Division
U.S. Army Corps of Engineers, Rock Island
Attn: OD-P
Clock Tower Building
P.O. Box 2004
Rock Island, IL 61204-2004

FAP Route 786 (IL Route 170)
Section (109) BR
LaSalle County
SN 050-0070 (exist.) / 050-0246 (prop.)
IL 170 over Illinois River

Dear Mr. Johnson:

The Illinois Department of Transportation, District 3 has scheduled a letting on January 18, 2008 for construction bids to remove and replace Seneca Bridge, SN 050-0070 with SN 050-0246, which carries IL Route 170 in Seneca, LaSalle County over the Illinois River at River Mile 252.7 with a drainage area of approximately 8,259 square miles.

Temporary instream works consisting of one or a combination of any of the following methods will be in place to facilitate removal and replacement of the existing structure at the option of the contractor, namely: cofferdams; causeways consisting of clean coarse aggregates and/or barges to serve as work platforms. (See attached sketch plan).

All instream activities will be accomplished in a good workmanship manner with a minimum stream disturbance as much as possible. All temporary instream works will be removed from the stream channel and taken to an upland site upon completion of the project.

The project will also involve the relocation of DuPont Rd., which is located south of the existing bridge. The relocated DuPont Rd. will be in close proximity to a wetland area. Protective measures will be in place to protect the wetland and avoid any impacts during construction. (See attached Wetland Determination and Impacts Evaluation).

We are seeking Department of the Army approval. If you have any question or need additional information, please contact Mr. Steve Ferguson, District Bridge & Hydraulics Engineer, at (815) 434-8964 or at the above-listed address.

Sincerely,

George F. Ryan, P.E.
Deputy Director of Highways,
Region Two Engineer

By: Rick Powell, P.E.
District Studies and Plans Engineer

RY:ct



Illinois Department of Transportation

Division of Highways / Region 2 / District 3
700 East Norris Drive / Ottawa, Illinois / 61350-0697
Telephone 815/434-6131

FILE COPY

May 1, 2007

Mr. Bruce Yurdin
Manager, Bureau of Water Section #15
Watershed Management Section
Illinois Environmental Protection Agency
1021 North Grand Ave. East, P.O. Box 19276
Springfield, IL 62794-9276

FAP Route 786 (IL Route 170)
Section (109) BR
LaSalle County
SN 050-0070 (exist.) / 050-0246 (prop.)
IL 170 over Illinois River

Dear Mr. Yurdin:

The Illinois Department of Transportation, District 3 has scheduled a letting on January 18, 2008 for construction bids to remove and replace Seneca Bridge, SN 050-0070 with SN 050-0246, which carries IL Route 170 in Seneca, LaSalle County over the Illinois River with a drainage area of approximately 8,259 square miles.

Temporary instream works consisting of one or a combination of any of the following methods will be in place to facilitate removal and replacement of the existing structure at the option of the contractor, namely: cofferdams; causeways consisting of clean coarse aggregates and/or barges to serve as work platforms. (See attached sketch plan).

All instream activities will be accomplished in a good workmanship manner with a minimum stream disturbance as much as possible. All temporary instream works will be removed from the stream channel and taken to an upland site upon completion of the project.

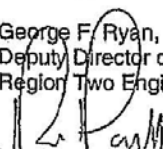
The project will also involve the relocation of DuPont Rd., which is located south of the existing bridge. The relocated DuPont Rd. will be in close proximity to a wetland area. Protective measures will be in place to protect the wetland and avoid any impacts during construction. (See attached Wetland Determination and Impacts Evaluation).

We are seeking Illinois Environmental Protection Agency water quality certification or waiver for this project. We have applied for a nationwide 404 permit from the U.S. Army Corps of Engineers.

If you have any question or need additional information, please contact Mr. Steve Ferguson, District Bridge & Hydraulics Engineer, at (815) 434-8964 or at the above-listed address.

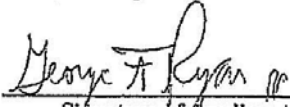
Sincerely,

George F. Ryan, P.E.
Deputy Director of Highways,
Region Two Engineer

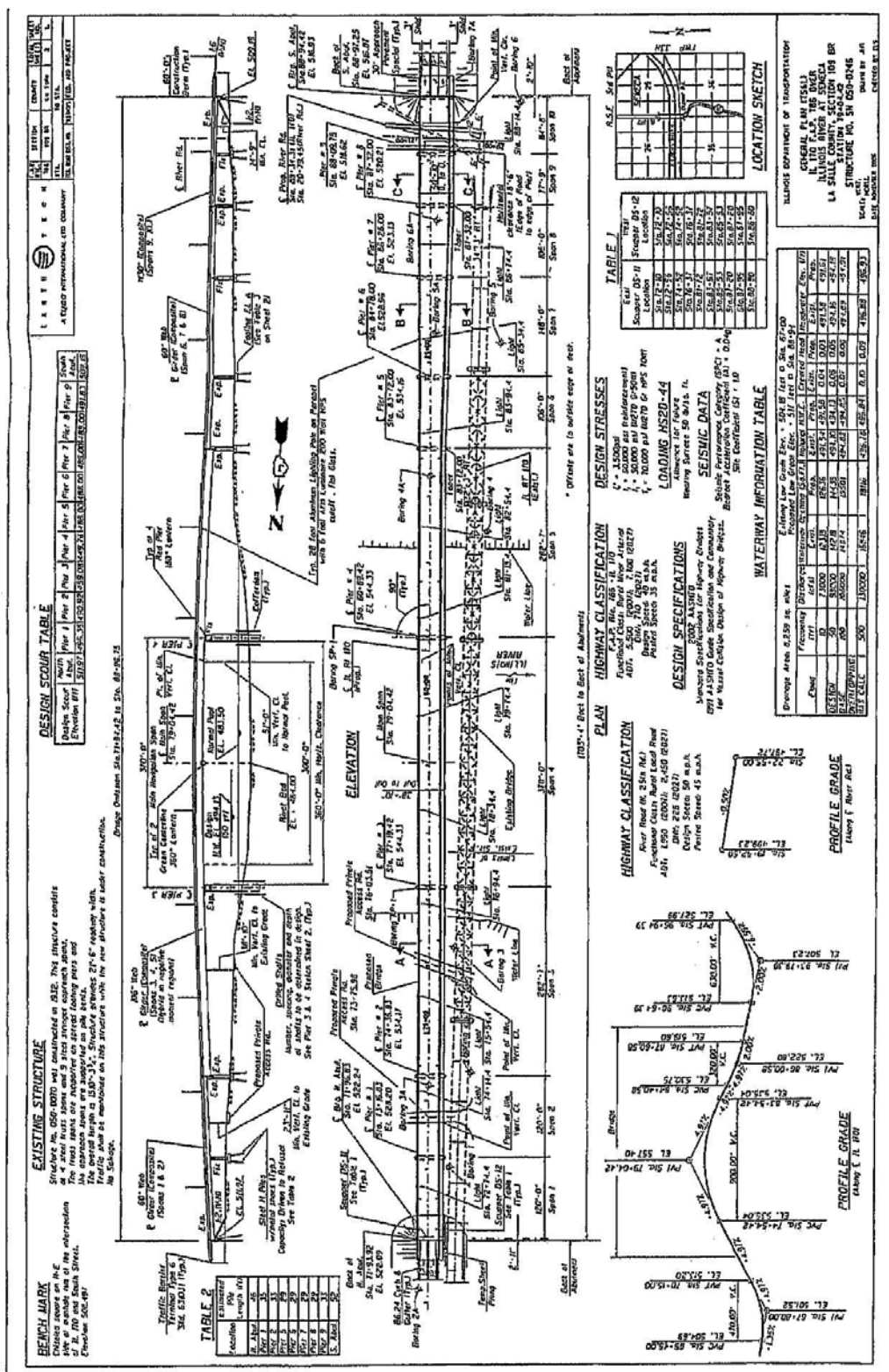

By: Rick Powell, P.E.
District Studies and Plans Engineer

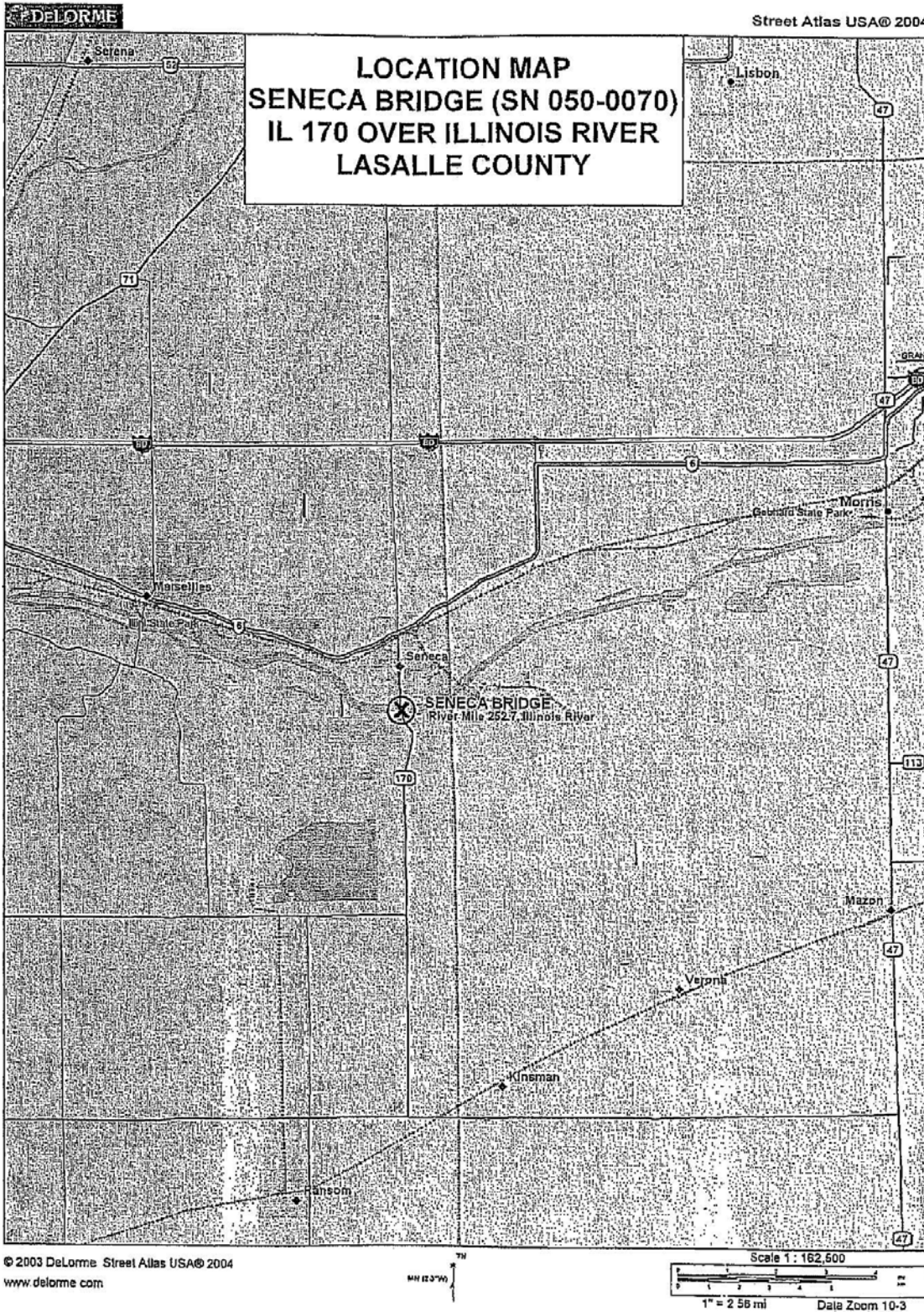
RY:ct

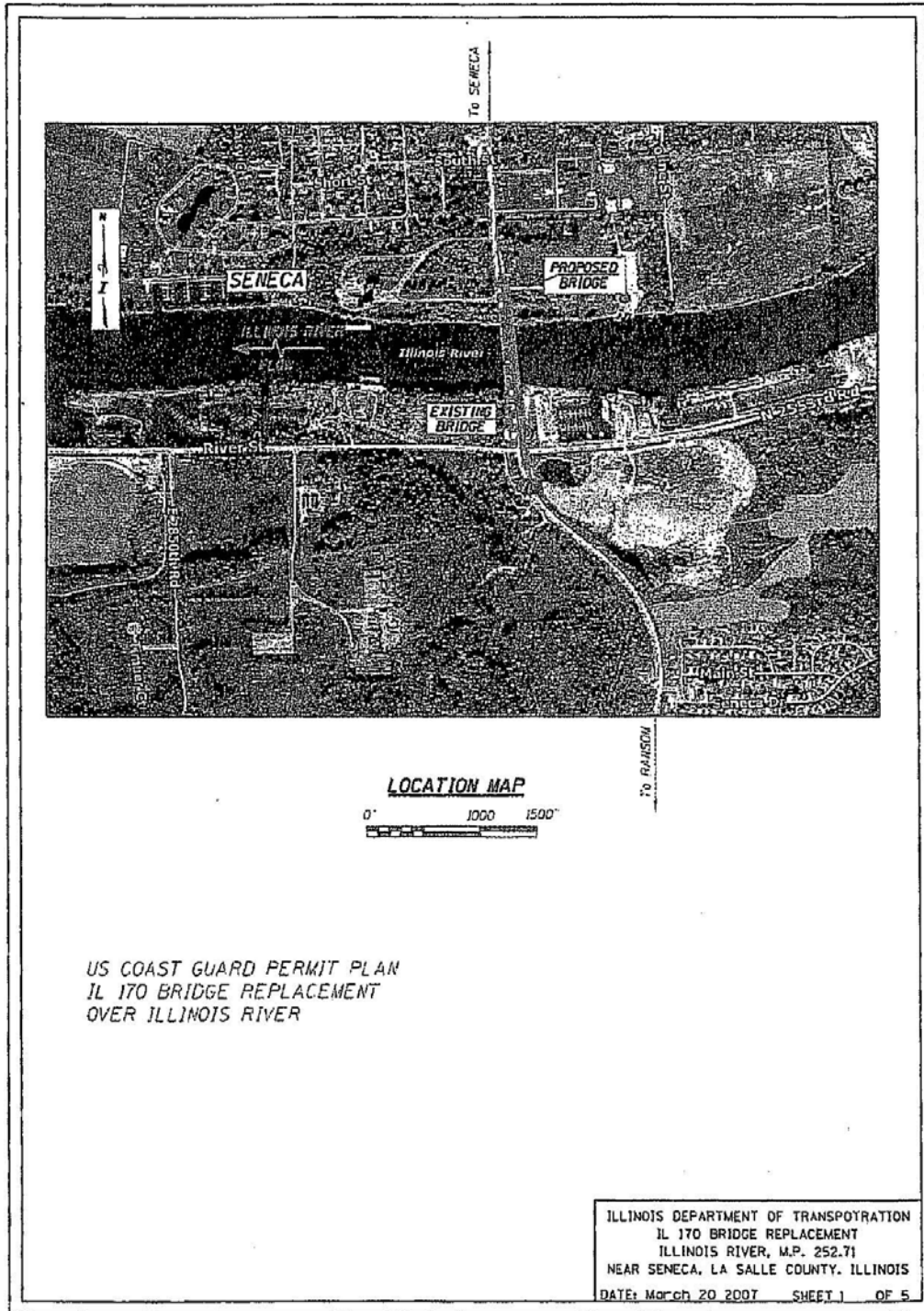
JOINT APPLICATION FORM

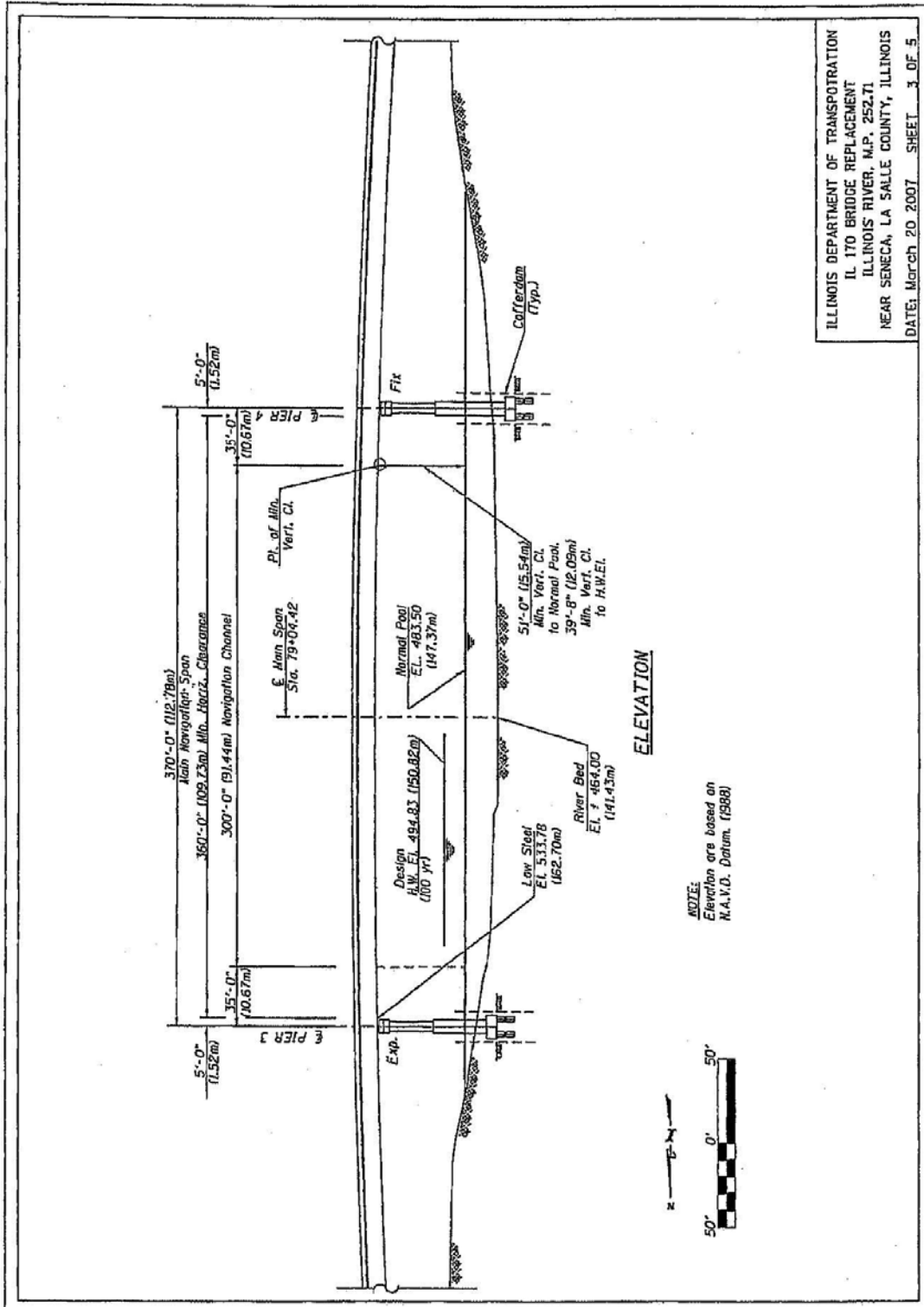
1. Jt. Application No. (To Be Assigned By Agency)		2. 1 May 2007 Day Month Year		3. For Agency Use Only	
4. Name & Address of Applicant Illinois Department of Transportation Division of Highways – District 3 700 East Norris Drive Ottawa, IL 61350			5. Name, Address & Title of Authorized Agent George F. Ryan, P.E. – Region 2 Engineer Illinois Department of Transportation 700 E. Norris Drive Ottawa, IL 61350		
6. Describe in detail the proposed activity, its purpose, and intended use. If additional space is needed, attach additional support information to each agency application. The proposed activity will consist of the removal and replacement of Seneca Bridge, SN 050-0070 with SN 050-0246, which carries IL Route 170 in Seneca, LaSalle County over the Illinois River at River Mile 252.7 with a drainage area of approximately 8,259 sq. mi. Temporary instream works consisting of one or a combination of any of the following methods at the option of the contractor will be in place to facilitate removal and replacement of the existing structure, namely: cofferdams; causeways consisting of clean coarse aggregates and/or barges to serve as work platforms. (See attached sketch plan). All instream activities will be accomplished in a good workmanship manner with minimum stream disturbance as much as possible. All temporary instream works will be removed from the stream channel and taken to an upland site upon completion of the project. The project will also involve the relocation of DuPont Rd. south of the existing bridge. The relocated DuPont Rd. will be in close proximity to a wetland area. Protective measures will be in place to protect the wetland and avoid any impacts during construction. (See attached Wetland Determination & Impacts Evaluation).					
7. Name, address, and telephone number of all adjoining and potentially affected property owners, including the owner of subject property if different from applicant. All work will take place on property belonging to the state of Illinois.					
8. Location of Activity Address: IL Route 170			Legal Description:		
Street, Road, or Other Descriptive Location Seneca			SW 25 33N 5E 3 rd 1/4 Sec. Twp. Rge. PM		
In or Near City or Town LaSalle Illinois			Tax Assessor's Description (If Known) Map No. Subdiv. No. Lot No.		
County LaSalle		State Illinois	Zip Code		Name of Waterway at Location of the Activity Illinois River
9. Date Activity is to Commence April, 2008			Date Activity to be Completed April, 2010		
10. Is any portion of the activity for which authorization is sought now complete? <input type="checkbox"/> Yes <input checked="" type="checkbox"/> No If answer is "Yes", give reasons in the remark section. Month and year activity was completed _____ Indicate the existing work on drawings.					
11. List all approvals or certifications required by other federal, interstate, or local agencies for any structures, construction, discharges, deposits, or other activities in this application. If the form is being used for concurrent application to the Corps of Engineers, Illinois Department of Transportation, and Illinois Environmental Protection Agency, these agencies need not be listed. <u>Issuing Agency</u> <u>Type Approval</u> <u>Identification No.</u> <u>Date of Application</u> <u>Date of Approval</u> Concurrent Application					
12. Has any agency denied approval for the activity described herein or for any activity directly related to the activity described herein? <input type="checkbox"/> Yes <input checked="" type="checkbox"/> No (If "Yes", explain in remarks.)					
13. Remarks Discharge will consist of clean material. Any excavated material will be taken to an upland site.					
14. Application is hereby made for authorization of the activities described herein. I certify that I am familiar with the information contained in the application and to the best of my knowledge and belief; such information is true, complete, and accurate. I further certify that I possess the authority to undertake the proposed activities.					
					 Signature of Applicant or Authorized Agent

bhu/ldol3

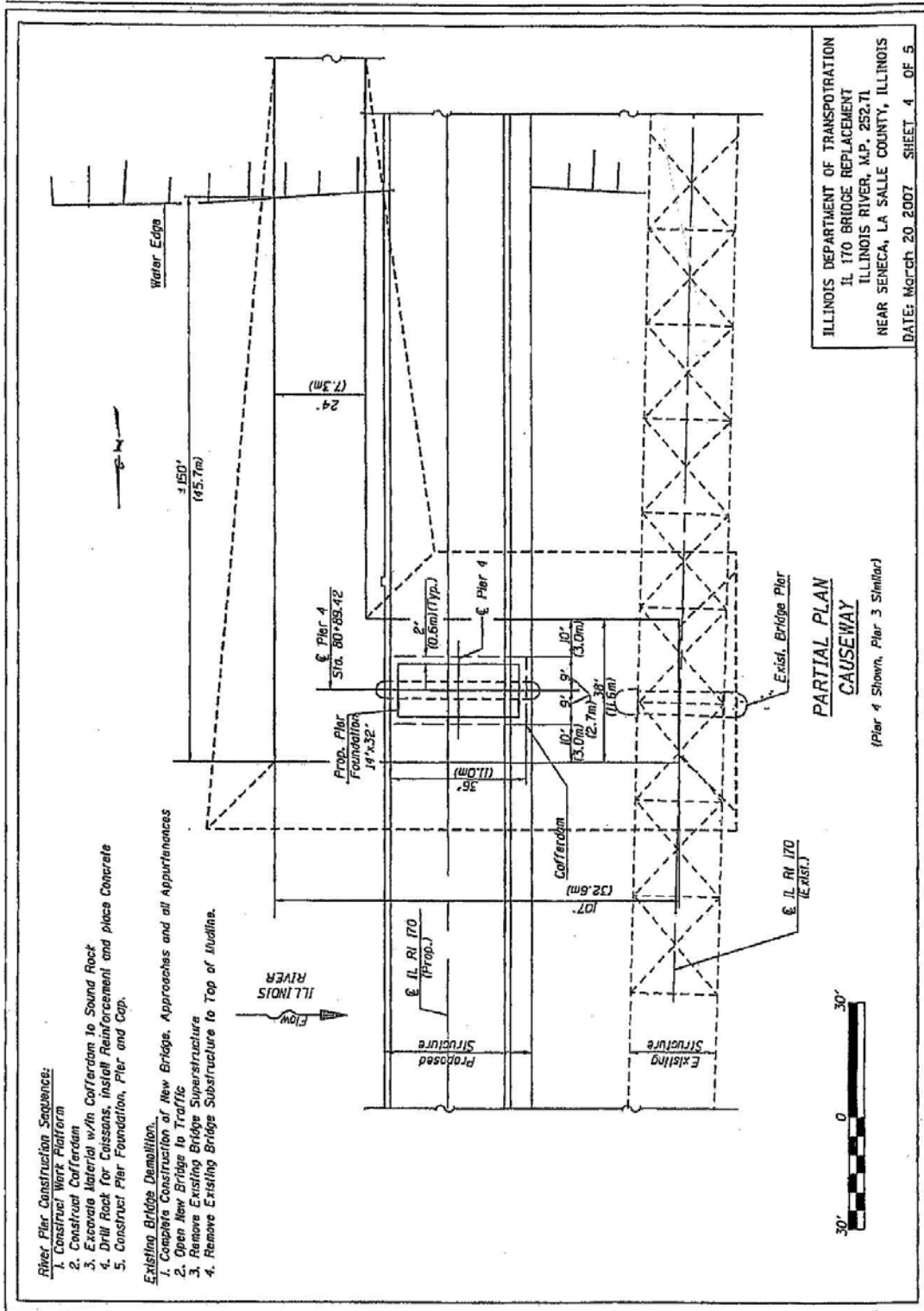


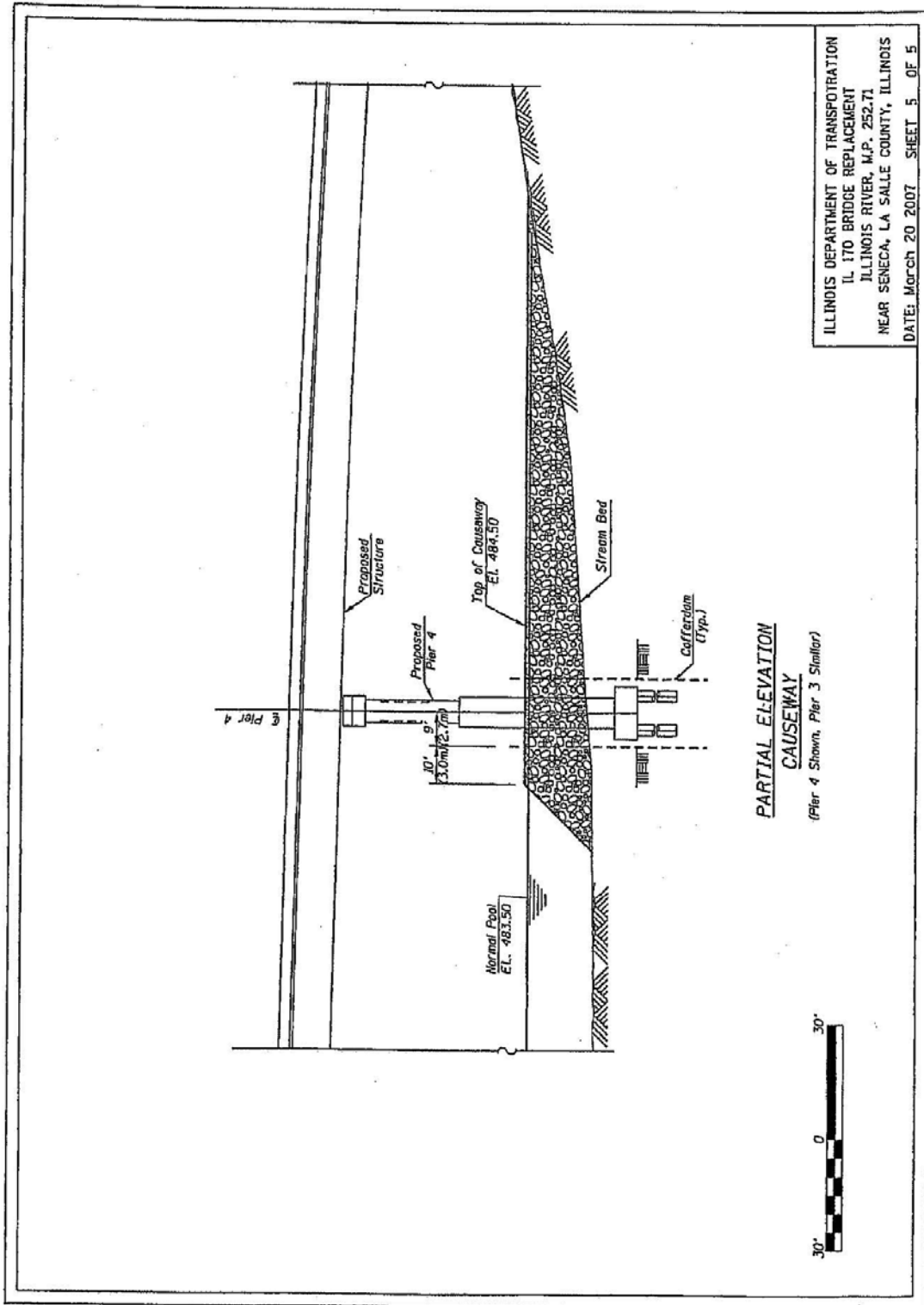


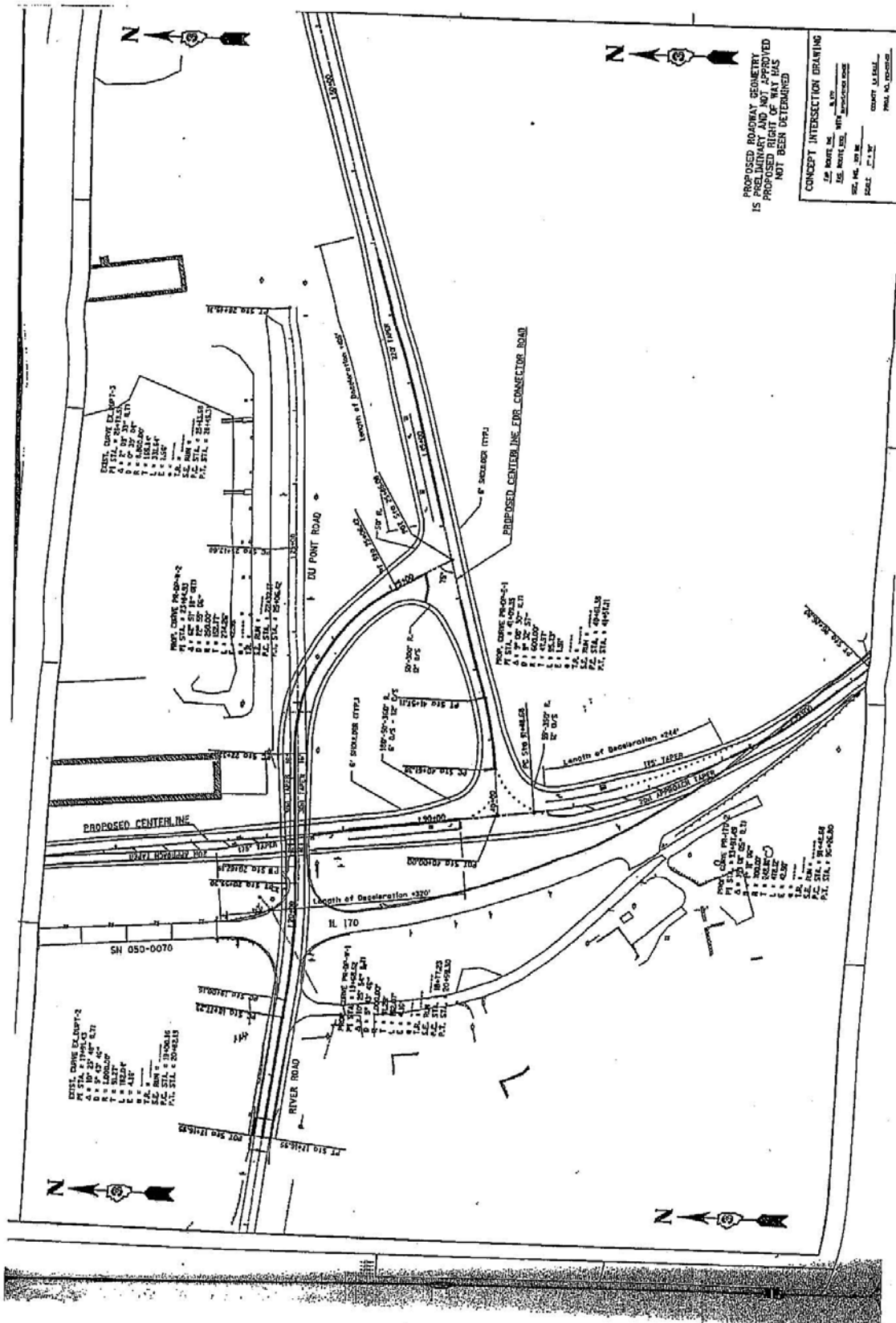




ILLINOIS DEPARTMENT OF TRANSPORTATION
 IL 170 BRIDGE REPLACEMENT
 ILLINOIS RIVER, M.P. 252.71
 NEAR SENECA, LA SALLE COUNTY, ILLINOIS
 DATE: March 20, 2007 SHEET 3 OF 5







FAP 786 (IL 170) Right of Way impacts

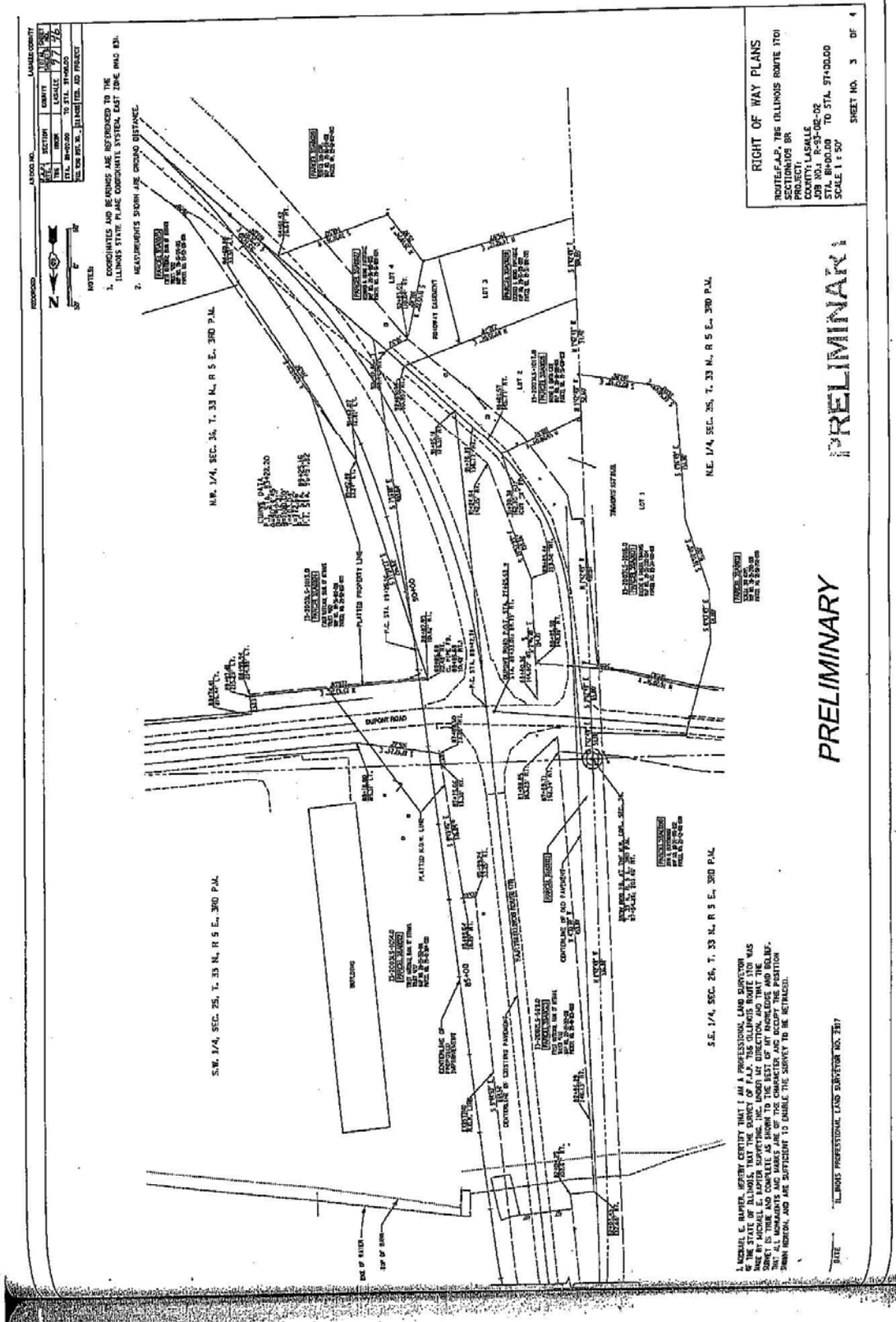
Tax Identification Number	Property Owner	Roadway Station	Proposed Right of Way, Sq. Feet	Proposed Temporary Easement, Sq. Feet	Other Impacts
MAP No. 20-25-151-008	Thomas N. & Bonnie E. Peterson P.O. Box 994 Seneca, Il 61360	59+00 LT	0	0	NO
MAP No. 20-26-283-007	Thomas N. & Bonnie E. Peterson P.O. Box 994 Seneca, Il 61360	59+00 RT	0	0	NO
MAP No. 20-26-284-001	Thomas N. & Bonnie E. Peterson P.O. Box 994 Seneca, Il 61360	60+00 RT	0	0	NO
MAP No. 20-25-151-009	Harland Sr. & Mary Hector(Trustee) P.O. Box 110, 400 S. Main St. Seneca, Ill 61360	61+25 LT	0	0.	NO
MAP No. 20-25-301-001	Harland Sr. & Mary Hector(Trustee) P.O. Box 110, 400 S. Main St. Seneca, Ill 61360	62+25 LT	0	0	NO
MAP No. 20-26-284-004	Benchmark Bank 1 N. Constitution Drive Aurora, Il 60506	61+00 RT	0	0	NO
MAP No. 20-26-430-009	Robert W. Howard 640 N. LaSalle Road Seneca, Il 61360	62+75 RT	0	0	NO
MAP No. 20-26-430-009	Robert W. Howard 640 N. LaSalle Road Seneca, Il 61360	63+50 RT	0	0	NO
MAP No. 20-26-430-005	Jerry & Mary Steinhour 353 Richards Seneca, Il 61360	64+80 RT	0	1075	NO
MAP No. 20-26-430-006	Patricia K. Stevens P.O. Box 408 Seneca, Il 61360	65+85 RT	0	1075	NO
MAP No. 20-26-430-007	Timothy C. & Deanna McGeorge 439 S. Main Street Seneca, Il 61360	66+75 RT	0	1075	NO

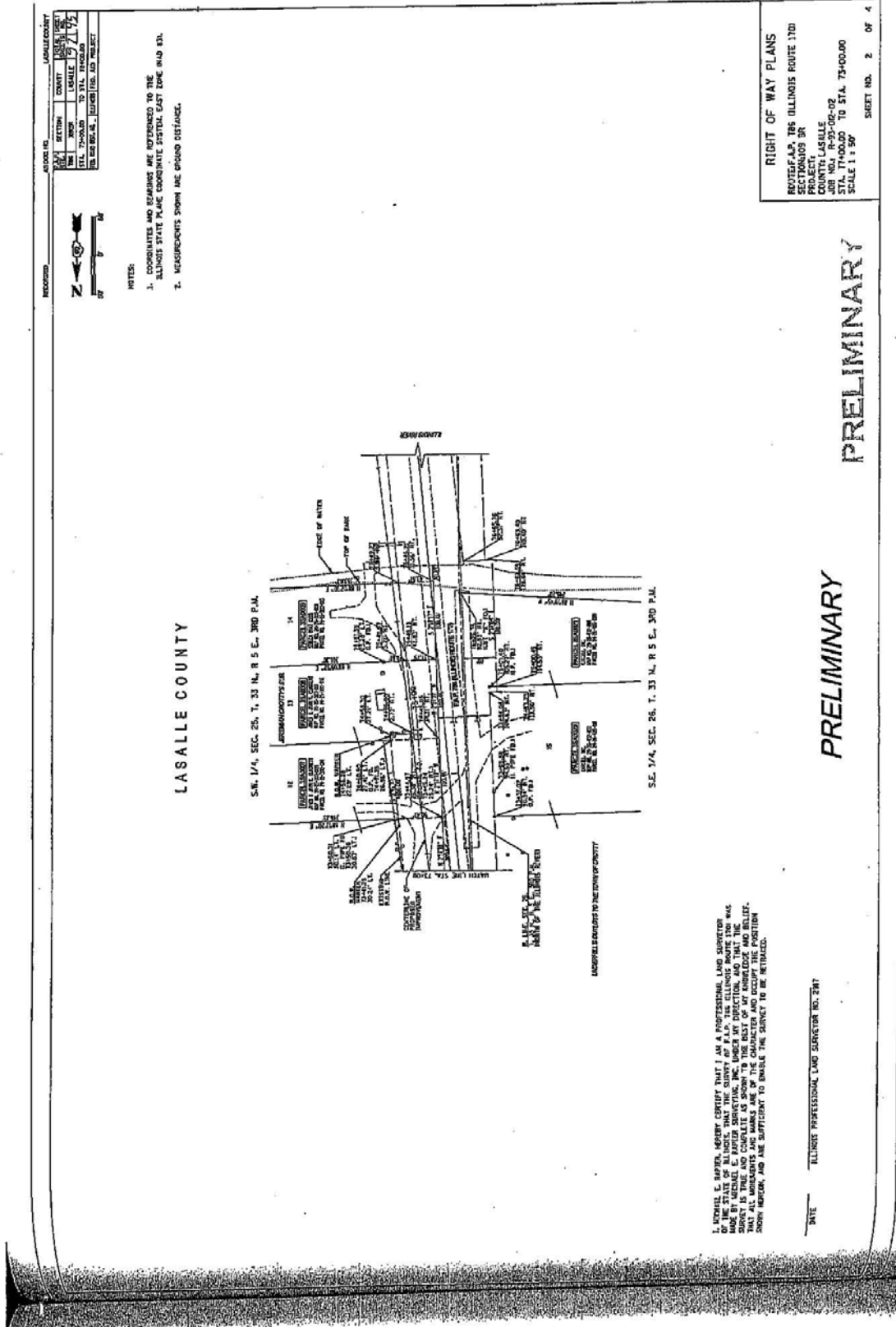
FAP 786 (IL 170) Right of Way impacts

Tax Identification Number	Property Owner	Roadway Station	Proposed Right of Way, Sq. Feet	Proposed Temporary Easement, Sq. Feet	Other Impacts
MAP No. 20-25-304-001	Seneca Community Consolidated/Grade School District #170 174 Oak Street Seneca, IL 61360	66+50 LT	0	2420	NO
MAP No. 20-26-430-008	Ronald T. & Sally Sheedy 449 S. Main Street Seneca, IL 61360	67+87 RT	0	1075	NO
MAP No. 20-25-302-001	James E. & Joan K. Claggett 2534 N. ILL 170 Seneca, IL 61360	66+90 LT	11944		TREE REMOVAL
MAP No. 20-26-432-002	Cargill, INC P.O. Box 5625 Minneapolis, MN 55440	69+15 RT	8241	12450	TREE REMOVAL
MAP No. 20-26-432-002	Cargill, INC P.O. Box 5625 Minneapolis, MN 55440	70+35 RT	8267	0	NO
MAP No. 20-25-302-002	James E. & Joan K. Claggett 2534 N. ILL 170 Seneca, IL 61360	70+97 LT 71+97 LT	14086	0	TREE REMOVAL
MAP No. 20-26-432-0020	Cargill, INC P.O. Box 5625 Minneapolis, MN 55440	72+50 RT	8250	0	NO
MAP No. 20-25-302-009	James E. & Joan K. Claggett 2534 N. ILL 170 Seneca, IL 61360	72+95 LT 73+95 LT	245	2728	REPLACE DRWY
MAP No. 20-25-303-011	James E. & Joan K. Claggett 2534 N. ILL 170 Seneca, IL 61360	74+95 LT	3285	3025	YES
MAP No. 20-25-303-008	Seneca Boat Club 174 Oak Street Seneca, IL 61360	75+95	3754	3830	YES
MAP No. 20-25-352-001	First Nat'l Bank of Ottawa Trust #692 P.O. Box 657 Ottawa, IL 61350	85+00 LT 91+00 LT 95+00 LT	39878 172835 1660	32180	YES

FAP 786 (IL 170) Right of Way impacts

Tax Identification Number	Property Owner	Roadway Station	Proposed Right of Way, Sq. Feet	Proposed Temporary Easement, Sq. Feet	Other Impacts
MAP No. 20-36-101-001	Wayne & Edith Cade 2485 E. 29 th Road Seneca, Ill 61360	92+00 RT	0	0	NO
MAP No. 20-35-200-004	Eugene & Sandra Timmons 2489 N. ILL Rte 170 Seneca, Il 61360	90+00 RT	0	0	NO
MAP No. 20-35-200-008	Seneca 380 Corp. 1805 High Grove Lane Ste 101 Naperville, Il 60540	17+00 RT River Rd.	0	0	NO





RIGHT OF WAY PLANS
 ROUTE 66A, IRR ILLINOIS ROUTE 170
 SECTION 109 BR
 PROJECT
 JOB NO. R-97-02-02
 STA. 17400.00 TO STA. 73400.00
 SCALE 1" = 50'

PRELIMINARY
 PRELIMINARY
 PRELIMINARY

I, MICHAEL E. BAYNE, HEREBY CERTIFY THAT I AM A PROFESSIONAL LAND SURVEYOR OF THE STATE OF ILLINOIS, THAT THE SURVEY OF PLAT, THE ILLINOIS ROUTE 170 WAS MADE BY MICHAEL E. BAYNE SURVEYING, INC. UNDER MY DIRECTION, AND THAT THE SURVEY WAS MADE IN ACCORDANCE WITH THE ILLINOIS SURVEYING ACT AND BELIEVE THAT ALL INSTRUMENTS AND MARKS ARE OF THE CHARACTER AND OCCUR AT THE POINTS SHOWN HEREON, AND ARE SUFFICIENT TO ENABLE THE SURVEY TO BE RETRACED.

DATE _____ ILLINOIS PROFESSIONAL LAND SURVEYOR NO. 287

SHEET NO. 2 OF 4

copy to Mr. Ruffensperger Dist. 3
7-20-2004



Illinois Department of Transportation

Memorandum

To: John P. Kos Attn: Thomas R. Sancken
From: Michael L. Hine By: Thomas C. Brooks
Subject: Biological Resources Review *Thomas C. Brooks*
Date: July 15, 2004

IL 170 (FAP 786)
Section (109)BR
SN 050-0070 over the Illinois River at Seneca
Job No. P-93-057-02 (Seq. #11564)
LaSalle County

Introduction

The proposed project involves removal and replacement of existing structure over the Illinois River on new alignment. Approximately 12.4 acres of additional right of way will be required.

The proposed project is being processed as a Categorical Exclusion. Based on the information your office has provided regarding the scope of work, a discussion of relevant biological resources is provided.

Endangered and Threatened Species

The U.S. Fish and Wildlife Service North Central Region "Red Book" lists the Indiana bat (*Myotis sodalis*), bald eagle (*Haliaeetus leucocephalus*), decurrent false aster (*Boltonia decurrens*) and leafy prairie clover (*Dalea foliosa*) as occurring in LaSalle County. There is no suitable habitat for these species in the project area.

The Illinois Endangered Species Protection Board lists a number of species as occurring in LaSalle and adjacent counties. This office has concluded that there is no suitable habitat for any of these species in the project area. The Illinois Department of Natural Resources Natural Heritage Database has no records of listed species, natural areas or nature preserves at the project site however, the limits of the Illinois River Natural Area begins one mile downstream (IDNR Agency Action Report dated November 5, 2003). To protect the river and the listed species that occur there, strict erosion control measures should be implemented.

Wetlands

The National Wetland Inventory Map (Seneca Quadrangle) depicts wetlands in the project area. The project was sent for field survey. Attached is a copy of the Wetland Report and aerial photograph. The results of the survey indicate the presence of one jurisdictional wetland within the project area (Site 2).

John P. Kos
July 15, 2004
Page 2

This project is being coordinated with US Fish and Wildlife Service because there is a potential for greater than 0.5 acre wetland impact. If DuPont Road is relocated as proposed, it will impact Site 2. Site 2 comprises approximately 0.7 acre and occurs in the project corridor. The amount of impact is not determined at this time.

Please fill out the Wetland Impact Evaluation Form (WIE Tab in the Wetland Form of the Project Monitoring Database) and submit the form to this office.

Streams

The project crosses the Illinois River, which is a Class I stream. Instream work involves that which is necessary to remove the existing 13-span structure. The new bridge will be constructed on new alignment in order to maintain traffic while the new bridge is being constructed. There will be approximately 2 piers in the main channel of the river for the proposed bridge with cofferdams being constructed.

Because of the construction activity in and around the stream, short-term sedimentation will occur. In accordance with Chapter 59, Section 8 of the BDE Manual, an erosion and sediment control plan will be designed incorporating measures to minimize sedimentation effects. With the implementation of the plan and the use of the Standard Specifications for erosion and sediment control, no long-term adverse impacts to the water quality and biological components of the stream will occur.

Tree Removal

Tree removal is required but the quantity is unknown at this time. Trees should be replaced in accordance with Departmental Policy D&E-18.

Coordination

By copy of this memorandum, IDNR and USFWS are being notified of this project. Their mitigation recommendations and our recommendations for further coordination will be forwarded to your office upon receipt of a response.

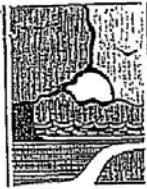
Conclusion

Project development may proceed with no additional Biological Resources Review unless (a) the scope of work is changed or otherwise different from that described to us, (b) IDNR or USFWS coordination response requires further coordination, or (c) otherwise notified by this office.

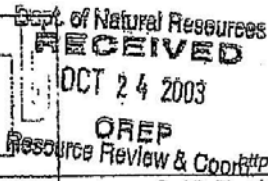
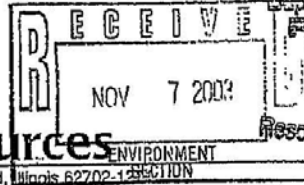
Attachments

cc: Steve Hamer (IDNR)
Richard Nelson (USFWS)

BT



Illinois
 Department of
Natural Resources
 One Natural Resources Way • Springfield, Illinois 62702-1000



<http://dnr.state.il.us>
 Rod R. Blagojevich, Governor

CONSULTATION AGENCY ACTION REPORT

(Illinois Administrative Code Title 17 Part 1075)
 Division of Resource Review and Coordination
 Stephen K. Davis, P.G., Chief

Date Submitted: October 23, 2003
 If this is a re-submittal, include previous IDNR response if available.

FOR DEPARTMENT USE ONLY
 PROJCODE: 0402011 DUE DATE: 12/05/03

Applicant: Illinois Department of Transportation Phone: (217) 785-0202
 Contact Person: Barb Traeger Fax: (217) 524-9356
 Applicant Address: Bureau of Design and Environment, Room 330 Email: _____
2300 S. Dirksen Parkway, Springfield, IL 62764

LOCATION OF PROPOSED ACTION
A MAP SHOWING LOCATION OF PROPOSED ACTION IS REQUIRED

Project Name: IL 170 (FAP 786) - Section (109)BR County: LaSalle
 Project Address (if available): _____ BDE Seq. No. 11564
 City, State, Zip: _____
 Township/Range/Section (e.g. T45N, R9E, S2): T33N, R5E, Section 25, 26, 35, 36
 Brief Description of Proposed Action: Remove and replace SN 050-0070 over the Illinois River on new alignment adjacent to the existing structure
12.4 acres additional right of way
 Projected Start Date and End Date of Proposed Action: _____

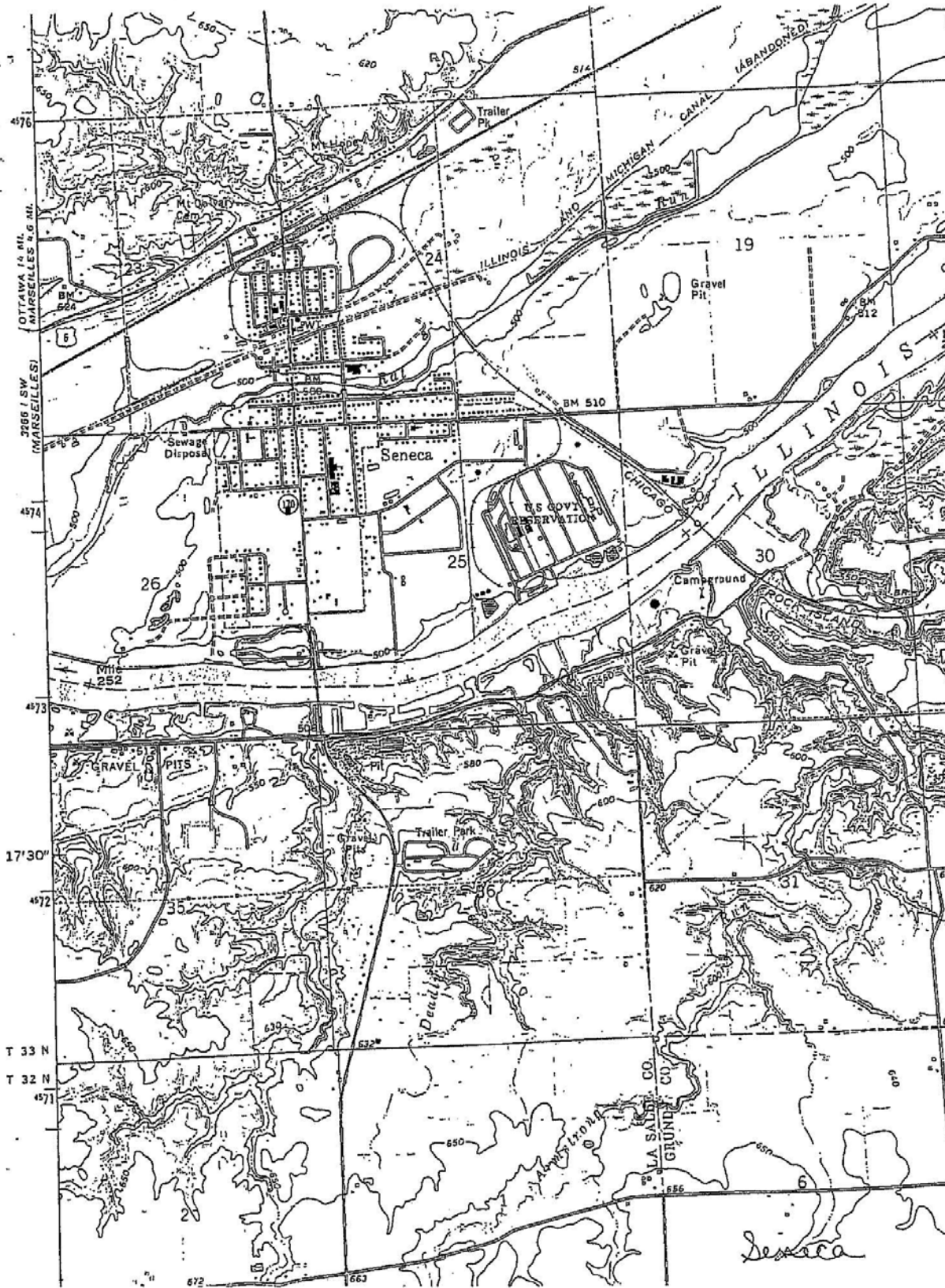
Will state funds or technical assistance support this action? Yes No] If Yes, the Interagency Wetland Policy Act may apply. Contact funding agency or this Division for details.

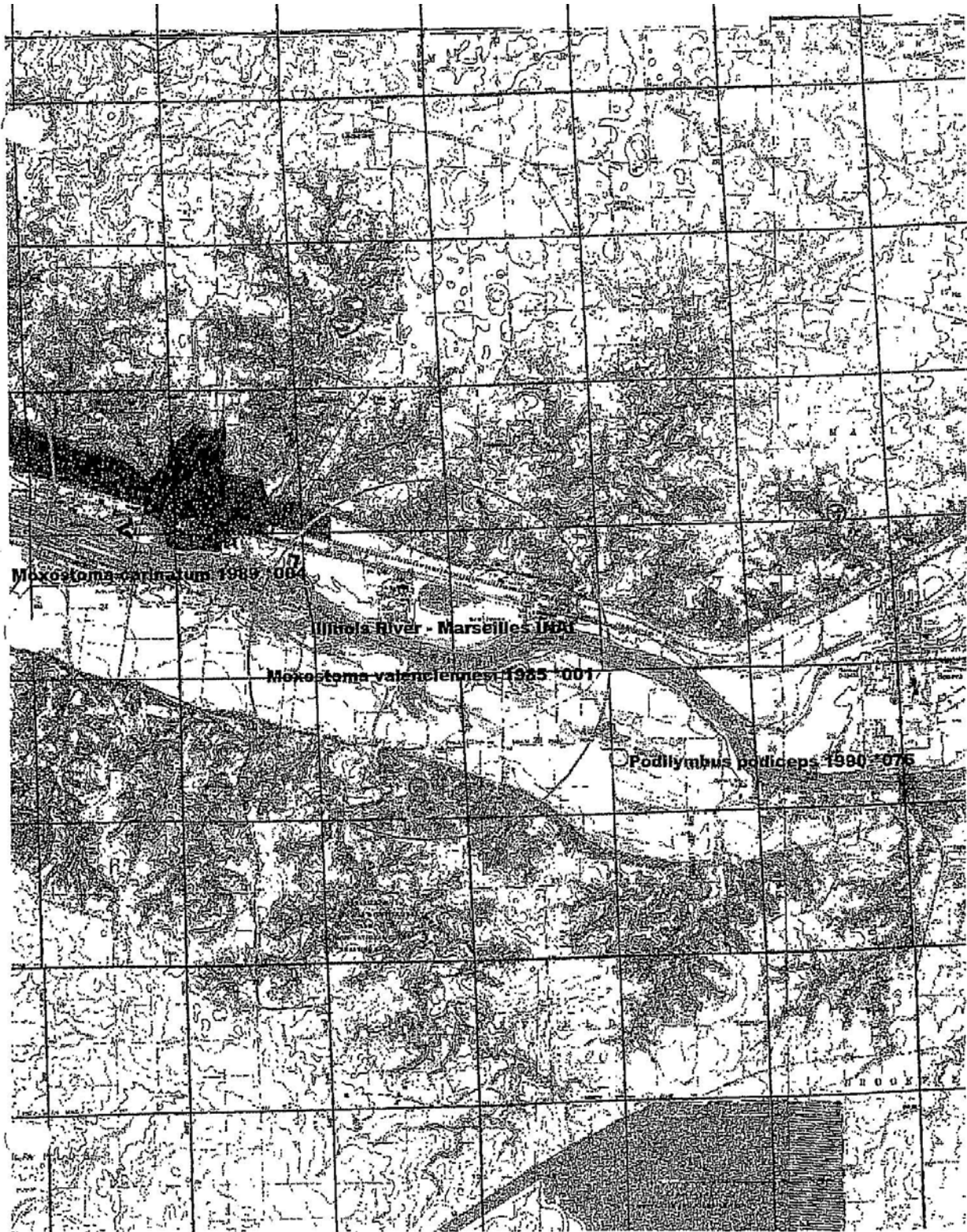
Local/State Agency with Project Jurisdiction: _____
 Contact: _____ Phone: _____
 Address: _____ Fax: _____

FOR DEPARTMENT USE ONLY

Are endangered/threatened species or Natural Areas present in the vicinity of the action? Yes No]
 Could the proposed action adversely affect the endangered/threatened species or Natural Area? Yes No]
 Is consultation terminated? Yes No]
 Comments: INAI Downstream - Stress on section
Control + debris in river.

Evaluated by: Steve Hanes
 Division of Resource Review & Coordination (217) 785-5500 Date: 11-5-03





Wetland Report For FAP 786 (IL 170), LaSalle County

Project Description:

This is a wetland survey conducted for the proposed bridge and road project FAP 786 (IL 170) in LaSalle County. The following sources were examined while surveying the project area to determine wetland locations and boundaries: United States Geological Survey topographic map and National Wetland Inventory (NWI) map (Seneca 7.5 minute quadrangle); *Soil Survey of LaSalle County, Illinois*; aerial photographs; *National List of Plant Species That Occur In Wetlands: Illinois*; the 1987 *Corps of Engineers Wetlands Delineation Manual*; and on-site vegetation, soils, topographic and hydrologic indicators. Two routine on-site wetland determinations were completed. Site 2 satisfied the three wetland criteria.

The Floristic Quality Index (FQI), developed by Swink and Wilhelm (1979) and modified by Taft, Ladd, Wilhelm, and Masters (*Erigenia*, 1997), was applied to the vegetation of each wetland. This index should not be used as a substitute for quantitative vegetation analysis in assessing plant communities, but it does provide a measure of the floristic integrity of each site. The FQI was calculated as follows: $I = R/\sqrt{N}$, where R represents the sum of the numerical ratings for all species native to Illinois recorded in the area, and N represents the number of recorded native species. The numerical rating for each species is shown in the species list for the site. The mean-rated quality also was determined by dividing the sum of numerical ratings for all native taxa by the number of recorded native taxa. FQI values of ten or less indicate low natural quality. Sites with FQI values of 20 or more (mean rated quality > 3.0) possess some evidence of native character and may be considered environmental assets.

Site 1: This floodplain forest is located 36.5 m (120 ft) west of IL 170 and north and south of and adjacent to North 25th St. Although dominant hydrophytic vegetation is present, this site lacks hydric soils and wetland hydrology. Thus, we determined that this site is not a wetland. The NWI coded this site as a PFO1Ah (diked or impounded, temporarily flooded, broad-leaved deciduous, forested, palustrine wetland). The FQI is 17.2 and the mean-rated quality is 2.7. These values are indicative of an average natural quality.

Site 2: This pond is located 207 m (680 ft) east of IL 170 and 43 m (140 ft) south of North 25th St. Based on the presence of dominant hydrophytic vegetation, hydric soils, and wetland hydrology, we determined that this site is a wetland. The NWI did not code this site as a wetland. This site functions as habitat for some aquatic species. The FQI is 5.9 and the mean-rated quality is 1.5. These values are indicative of a low natural quality. This pond comprises approximately 0.28 ha (0.7 acre) and occurs totally in the project corridor.

Watershed Data

The tributary to the Illinois River in the project area has a width of 6 m (20 ft) and for the most part was dry bottomed at the time of the field investigation. This creek consists of a sand-silt substrate. This project is located in the Illinois River -- Will Co. Line to Ottawa basin and has a USGS hydrologic unit code of 7120005.

ROUTINE ON-SITE WETLAND DETERMINATION
Site 1 (page 1 of 5)

Field Investigators: Keene, Ketzner, and Larimore Date: 21 May 2004
Job No.: P-93-057-02 Project Name: FAP 786 (IL 170)
State: Illinois County: LaSalle Applicant: IDOT District 3
Site Name: Floodplain forest
Legal Description: NE/4, NE/4, Sec. 35 and SE/4, SE/4, Sec. 26 T. 33N., R. 5E.
Location: 36.5 m (120 ft) west of IL 170 and north and south of and adjacent to
North 25th St.

Do normal environmental conditions exist at this site? Yes: X No:
Have the vegetation, soils, or hydrology been significantly disturbed? Yes: No: X

VEGETATION

Dominant Plant Species	Indicator Status	Stratum
1. <i>Acer negundo</i>	FACW-	tree
2. <i>Celtis occidentalis</i>	FAC-	tree
3. <i>Fraxinus pennsylvanica</i>	FACW	tree
4. <i>Alliaria petiolata</i>	FAC	herb
5. <i>Laportea canadensis</i>	FACW	herb
6. <i>Mertensia virginica</i>	FACW	herb

Percentage of dominant species that are OBL, FACW, FAC+, or FAC: 83%

Hydrophytic vegetation: Yes: X No:
Rationale: More than 50% of the dominants are OBL, FACW, FAC+,
or FAC.

SOILS

Series and phase: Du Page loam
On LaSalle County hydric soils list? Yes: No: X
Is the soil a histosol? Yes: No: X Histic epipedon present? Yes: No: X
Redox concentrations: Yes: No: X Redox depletions: Yes: X No:
Matrix color: 10YR 4/3 and 4/2
Other indicators: None

Hydric soils: Yes: No: X
Rationale: Du Page loam is a well drained soil that lacks hydric soil
characteristics.

ROUTINE ON-SITE WETLAND DETERMINATION
Site 1 (page 2 of 5)

Field Investigators: Keene, Ketzner, and Larimore Date: 21 May 2004
Job No.: P-93-057-02 Project Name: FAP 786 (IL 170)
State: Illinois County: LaSalle Applicant: IDOT District 3
Site Name: Floodplain forest
Legal Description: NE/4, NE/4, Sec. 35 and SE/4, SE/4, Sec. 26 T. 33N., R. 5E.
Location: 36.5 m (120 ft) west of IL 170 and north and south of and adjacent to
North 25th St.

HYDROLOGY

Inundated: Yes: No: X Depth of standing water: NA

Depth to saturated soil: > 1.3 m (50 in)

Overview of hydrological flow through the system: This site is hydrologically influenced by precipitation, sheet flow from higher areas, and occasional stream overflow. Water leaves the site via evapotranspiration, sheet flow into the adjacent creek, and groundwater recharge.

Size of watershed: approximately 21,290 km² (8,220 mi²)

Other field evidence observed: None

Wetland hydrology: Yes: No: X

Rationale: There was no field evidence indicating that this site is inundated or saturated for a sufficient duration to satisfy the wetland hydrology criterion. This creek is entrenched at least by ten feet and was mainly dry at the time of the field investigation.

DETERMINATION AND RATIONALE:

Is the site a wetland?
Rationale for decision:

Yes: No: X

Although dominant hydrophytic vegetation is present, this site lacks hydric soils and wetland hydrology. Thus, we determined that this site is not a wetland. The NWI coded this site as a PFO1Ah (diked or impounded, temporarily flooded, broad-leaved deciduous, forested, palustrine wetland).

ROUTINE ON-SITE WETLAND DETERMINATION
 Site 1 (page 3 of 5)

Field Investigators: Keene, Ketzner, and Larimore Date: 21 May 2004
 Job No.: P-93-057-02 Project Name: FAP 786 (IL 170)
 State: Illinois County: LaSalle Applicant: IDOT District 3
 Site Name: Floodplain forest
 Legal Description: NE/4, NE/4, Sec. 35 and SE/4, SE/4, Sec. 26 T. 33N., R. 5E.
 Location: 36.5 m (120 ft) west of IL 170 and north and south of and adjacent to
 North 25th St.

SPECIES LIST

Scientific name	Common name	Stratum	Wetland Indicator status	CC*
<i>Acer negundo</i>	box elder	tree, shrub	FACW-	1
<i>Alliaria petiolata</i>	garlic mustard	herb	FAC	**
<i>Allium canadense</i>	wild garlic	herb	FACU	2
<i>Apocynum sibiricum</i>	Indian hemp	herb	FAC+	2
<i>Asarum canadense</i>	Canada wild ginger	herb	UPL	5
<i>Aster simplex</i>	panicled aster	herb	FACW	3
<i>Bromus inermis</i>	awnless brome grass	herb	UPL	**
<i>Carex blanda</i>	woodland sedge	herb	FAC	2
<i>Carex gravida</i>	heavy sedge	herb	UPL	4
<i>Carex</i> sp.	sedge	herb	---	--
<i>Catalpa</i> sp.	catalpa	sapling	FACU	--
<i>Celtis occidentalis</i>	hackberry	tree, shrub	FAC-	3
<i>Cercis canadensis</i>	eastern redbud	sapling	FACU	3
<i>Circaea lutetiana</i>	enchanter's nightshade	herb	FACU	2
<i>Cornus drummondii</i>	rough-leaved dogwood	shrub	FAC	2
<i>Cryptotaenia canadensis</i>	honewort	herb	FAC	1
<i>Elymus virginicus</i>	Virginia wild rye	herb	FACW-	4
<i>Euonymus atropurpureus</i>	burning bush	shrub	FAC-	5
<i>Eupatorium rugosum</i>	white snakeroot	herb	FACU	2
<i>Fraxinus pennsylvanica</i>	green ash	tree, shrub	FACW	2
<i>Galium aparine</i>	annual bedstraw	herb	FACU	0
<i>Geum canadense</i>	white avens	herb	FAC	2
<i>Hackelia virginiana</i>	stickseed	herb	FAC-	1
<i>Impatiens capensis</i>	jewelweed	herb	FACW	2
<i>Juglans nigra</i>	black walnut	tree, shrub	FACU	4

(species list continued on following page)

ROUTINE ON-SITE WETLAND DETERMINATION
 Site 1 (page 4 of 5)

Field Investigators: Keene, Ketzner, and Larimore Date: 21 May 2004
 Job No.: P-93-057-02 Project Name: FAP 786 (IL 170)
 State: Illinois County: LaSalle Applicant: IDOT District 3
 Site Name: Floodplain forest
 Legal Description: NE/4, NE/4, Sec. 35 and SE/4, SE/4, Sec. 26 T. 33N., R. 5E.
 Location: 36.5 m (120 ft) west of IL 170 and north and south of and adjacent to
 North 25th St.

SPECIES LIST (concluded)

Scientific name	Common name	Stratum	Wetland indicator status	CC*
<i>Lactuca floridana</i>	blue lettuce	herb	FAC-	4
<i>Laportea canadensis</i>	Canada wood nettle	herb	FACW	2
<i>Lonicera tatarica</i>	Tartarian honeysuckle	shrub	FACU	**
<i>Mertensia virginica</i>	bluebells	herb	FACW	5
<i>Morus alba</i>	white mulberry	tree, shrub	FAC	**
<i>Osmorhiza longistylis</i>	anise-root	herb	FACU-	3
<i>Parthenocissus quinquefolia</i>	Virginia creeper	herb	FAC-	2
<i>Pastinaca sativa</i>	parsnip	herb	UPL	**
<i>Phytolacca americana</i>	pokeweed	herb	FAC-	1
<i>Platanus occidentalis</i>	sycamore	tree	FACW	3
<i>Polygonum scandens</i>	climbing buckwheat	herb	FAC	2
<i>Polygonum virginianum</i>	Virginia knotweed	herb	FAC	3
<i>Ribes missouriense</i>	Missouri gooseberry	herb	UPL	2
<i>Rubus occidentalis</i>	black raspberry	shrub	UPL	2
<i>Rudbeckia laciniata</i>	cutleaf coneflower	herb	FACW+	3
<i>Sambucus canadensis</i>	common elder	shrub	FACW-	2
<i>Sanicula gregaria</i>	common snakeroot	herb	FAC+	2
<i>Sicyos angulatus</i>	bur cucumber	herb	FACW-	3
<i>Smilax</i> sp.	carrión flower	herb	---	--
<i>Smilax hispida</i>	bristly greenbrier	woody vine	FAC	3
<i>Solidago canadensis</i>	Canada goldenrod	herb	FACU	1
<i>Solidago gigantea</i>	late goldenrod	herb	FACW	3
<i>Taraxacum officinale</i>	common dandelion	herb	FACU	**
<i>Toxicodendron radicans</i>	poison ivy	woody vine, herb	FAC+	1
<i>Ulmus americana</i>	American elm	sapling, shrub	FACW-	5
<i>Verbesina alternifolia</i>	wing stem	herb	FACW	4
<i>Vitis riparia</i>	riverbank grape	woody vine	FACW-	2

* Coefficient of Conservatism (Taft et al. 1997)

$$FQI = 110/\sqrt{41} = 110/6.4 = 17.2$$

** Non-native species

$$\text{Mean-rated quality} = 110/41 = 2.7$$

ROUTINE ON-SITE WETLAND DETERMINATION

Site 1 (page 5 of 5)

Field Investigators: Keene, Ketzner, and Larimore Date: 21 May 2004
Job No.: P-93-057-02 Project Name: FAP 786 (IL 170)
State: Illinois County: LaSalle Applicant: IDOT District 3
Site Name: Floodplain forest
Legal Description: NE/4, NE/4, Sec. 35 and SE/4, SE/4, Sec. 26 T. 33N., R. 5E.
Location: 36.5 m (120 ft) west of IL 170 and north and south of and adjacent to
North 25th St.

Determined by: Dennis J. Keene (soils and hydrology)
David Ketzner and Rick Larimore (vegetation and hydrology)
Illinois Natural History Survey
607 East Peabody Drive
Champaign, Illinois 61820
(217)244-0873, 244-8821, and 244-6716

ROUTINE ON-SITE WETLAND DETERMINATION
Site 2 (page 1 of 3)

Field Investigators: Keene, Ketzner, and Larimore Date: 21 May 2004
Job No.: P-93-057-02 Project Name: FAP 786 (IL 170)
State: Illinois County: LaSalle Applicant: IDOT District 3
Site Name: Pond
Legal Description: NW/4, NW/4, Sec. 36 T. 33N., R. 5E.
Location: 207 m (680 ft) east of IL 170 and 43 m (140 ft) south of North 25th St.

Do normal environmental conditions exist at this site? Yes: X No:
Have the vegetation, soils, or hydrology been significantly disturbed? Yes: No: X

VEGETATION

Dominant Plant Species	Indicator Status	Stratum
1. <i>Salix amygdaloides</i>	FACW	shrub
2. <i>Salix exigua</i>	OBL	shrub
3. <i>Phragmites australis</i>	FACW+	herb

Percentage of dominant species that are OBL, FACW, FAC+, or FAC: 100%

Hydrophytic vegetation: Yes: X No:
Rationale: More than 50% of the dominants are OBL, FACW, FAC+,
or FAC.

SOILS

Series and phase: Undetermined (excavated)

On LaSalle County hydric soils list?: Yes: No: X

Is the soil a histosol? Yes: No: X Histic epipedon present? Yes: No: X

Redox concentrations: Yes: No: Undet: X Redox depletions: Yes: No: Undet: X

Matrix color: NA

Other hydric soil indicators: Soil is saturated.

Hydric soils: Yes: X No:
Rationale: This site was excavated and now serves as a pond. This soil is
ponded for a long duration or a very long duration during the
growing season. This characteristic is evidence of a hydric
soil.

ROUTINE ON-SITE WETLAND DETERMINATION
Site 2 (page 2 of 3)

Field Investigators: Keene, Ketzner, and Larimore Date: 21 May 2004
Job No.: P-93-057-02 Project Name: FAP 786 (IL 170)
State: Illinois County: LaSalle Applicant: IDOT District 3
Site Name: Pond
Legal Description: NW/4, NW/4, Sec. 36 T. 33N., R. 5E.
Location: 207 m (680 ft) east of IL 170 and 43 m (140 ft) south of North 25th St.

HYDROLOGY

Inundated: Yes: X No: Depth of standing water: < 2 m (6 ft)
Depth to saturated soil: At surface
Overview of hydrological flow through the system: This site is hydrologically influenced by precipitation and sheet flow from higher surrounding areas. Water leaves the site via evaporation and evapotranspiration.
Size of watershed: < 2.59 km² (1 mi²)
Other field evidence observed: None

Wetland hydrology: Yes: X No:

Rationale: Field evidence indicates that this site is inundated or saturated for a sufficient duration to satisfy the wetland hydrology criterion.

DETERMINATION AND RATIONALE:

Is the site a wetland? Yes: X No:
Rationale for decision: Based on the presence of dominant hydrophytic vegetation, hydric soils, and wetland hydrology, we determined that this site is a wetland. The NWI did not code this site as a wetland.

ROUTINE ON-SITE WETLAND DETERMINATION

Site 2 (page 3 of 3)

Field Investigators: Keene, Ketzner, and Larimore Date: 21 May 2004
 Job No.: P-93-057-02 Project Name: FAP 786 (IL 170)
 State: Illinois County: LaSalle Applicant: IDOT District 3
 Site Name: Pond
 Legal Description: NW/4, NW/4, Sec. 36 T. 33N., R. 5E.
 Location: 207 m (680 ft) east of IL 170 and 43 m (140 ft) south of North 25th St.

SPECIES LIST

Scientific name	Common name	Stratum	Wetland indicator status	CC*
<i>Ambrosia artemisiifolia</i>	bitterweed	herb	FACU	0
<i>Ambrosia trifida</i>	giant ragweed	herb	FAC+	0
<i>Conyza canadensis</i>	horseweed	herb	FAC-	0
<i>Equisetum arvense</i>	common horsetail	herb	FAC	0
<i>Euthamia graminifolia</i>	grassleaf goldenrod	herb	FACW-	3
<i>Leersia oryzoides</i>	rice cutgrass	herb	OBL	3
<i>Phragmites australis</i>	common red reed	herb	FACW+	1
<i>Polygonum lapathifolium</i>	curttop lady's thumb	herb	FACW+	0
<i>Polygonum</i> sp.	knotweed	herb	---	--
<i>Populus deltoides</i>	eastern cottonwood	herb	FAC+	2
<i>Ranunculus sceleratus</i>	cursed crowfoot	herb	OBL	3
<i>Rorippa islandica</i>	marsh yellow cress	herb	OBL	4
<i>Rumex altissimus</i>	pale dock	herb	FACW-	2
<i>Rumex crispus</i>	curly dock	herb	FAC+	**
<i>Salix amygdaloides</i>	peach-leaved willow	shrub	FACW	4
<i>Salix exigua</i>	sandbar willow	shrub	OBL	1
<i>Xanthlum strumarium</i>	cocklebur	herb	FAC	0

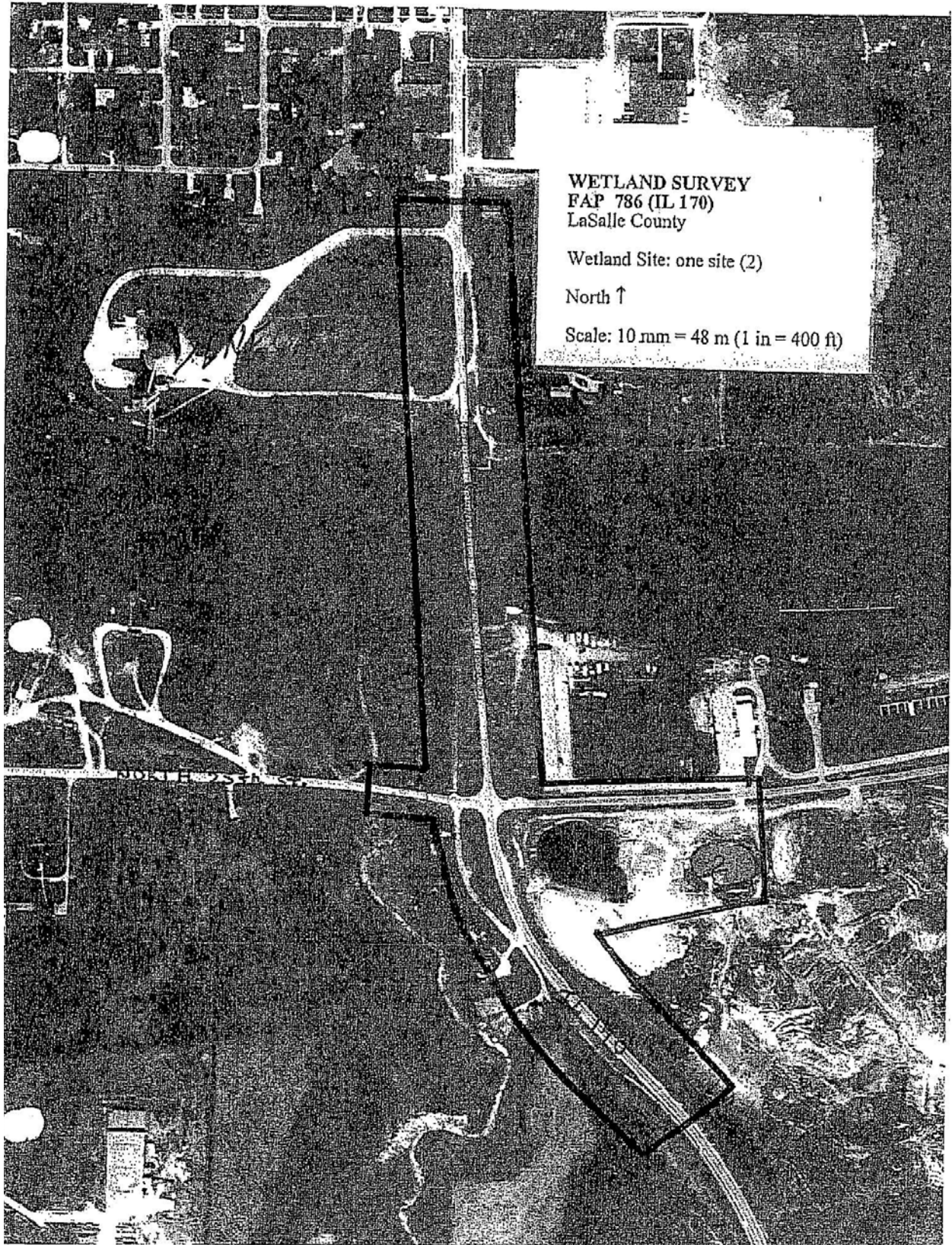
* Coefficient of Conservatism (Taft et al. 1997)

** Non-native species.

$$FQI = 23/\sqrt{15} = 23/3.9 = 5.9$$

$$\text{Mean-rated quality} = 23/15 = 1.5$$

Determined by: Dennis J. Keene (soils and hydrology)
 David Ketzner and Rick Larimore (vegetation and hydrology)
 Illinois Natural History Survey
 607 East Peabody Drive
 Champaign, Illinois 61820
 (217) 244-0873, 244-8821, and 244-6716



Wetlands

FILE COPY

Submittal Date: 10/14/2003 Sequence No: 11564
 District: 3 Requesting Agency: DOH Project No:
 Contract #: Job No.: P-93-057-02
 Counties: LaSalle
 Route: FAP 786 Marked: IL 170
 Street: DuPont Road Section: (109)BR
 Municipality(ies): Seneca Project Length: 1.1265 km 0.7 miles
 From/To (At): S N. 050-0070 carrying IL 170 over the Illinois River at Seneca
 Quadrangle: Seneca Township-Range-Section: T33N, R5E, Sec.26,25,35,36
 Anticipated Design Approval: 02/01/2005 Cleared for Design Approval: 04/19/2005
 Cleared for Letting: 04/19/2005 Mitigation:

Wetland Impacts Evaluation

Submittal Date: 04/15/2005
 Does the project have wetland effects? No Type:
 Summarize briefly why there are no practicable alternatives to the use of the wetland(s):
 Wetland mitigation is being proposed: Reviewed

Memo Date: 04/19/2005 Memo By: Barb Traeger
 Memo: Based on the information provided, it has been determined that the project will not have wetland impacts. The plans will indicate that fencing will be placed to ensure that construction activities do not encroach upon the wetland. The project is cleared for construction.
 Memo Date: 04/15/2005 Memo By: Roger F. Rynke
 Memo: The existing wetland site (pond) is located approximately 155 feet South of the centerline of DuPont Road. DuPont Road will be relocated South, and IL 179 will be relocated East of the existing alignment. The wetland pond will be located approximately 63 feet from the centerline of the relocated DuPont Road, and approximately 13 feet from the proposed right of way limits. An erosion control and high visibility fence will be placed prior to the construction of the relocated DuPont Road from Station 145±00 to Station 148±00 to protect the existing wetland pond. No permanent or temporary impacts will occur to the wetland pond.

Wetland Impacts and Mitigation Required