



F.A.P. RTE.	SECTION	COUNTY	TOTAL SHEETS	SHEET NO.
786	(109) BR	LASALLE	351	23
STA.		TO STA.		
FED. ROAD DIST. NO.		ILLINOIS FED. AID PROJECT		

PROPOSED PAVEMENT MARKING

LOCATION	THERMOPLASTIC					LETTERS & SYMBOLS (SQ. FT.)	POLYUREA, TYPE 2					LETTERS & SYMBOLS (SQ. FT.)
	MARKING LINE						MARKING LINE					
	4" (FEET)	6" (FEET)	8" (FEET)	12" (FEET)	24" (FEET)		4" (FEET)	6" (FEET)	8" (FEET)	12" (FEET)	24" (FEET)	
IL-170												
62+31.19 to 71+64.42											1954.3	
71+64.42 to 76+00.00											1742.5	
76+00 to 86+00											4456.6	
86+00 to 89+26.75									39.3		1320.0	19.1 73.4
86+00 to 99+09.49											4889.8	329.2 162.0 62.4
87+32 to 89+07												43.8
River Road												
17+11.28 to 25+52	1567.92											
Dupont Road												
140+83.64 to 149+00	2960.8				28.8							
149+00 to 155+08.33	2216.9											
TOTALS:	6745.6	0.0	0.0	0.0	28.8	0	14363.1	0.0	392.1	274.6	0	62.4

TEMPORARY PAVEMENT MARKING SCHEDULE

	MARKING LINE 4" (FEET)	MARKING LINE 24" (FEET)
STAGE I - PHASE 1	10200	0
STAGE I - PHASE 2	9789	0
STAGE 2 - PHASE 1	24035	50
STAGE 2 - PHASE 2	7333	50
STAGE 3	9273	0
TOTALS:	60630	100

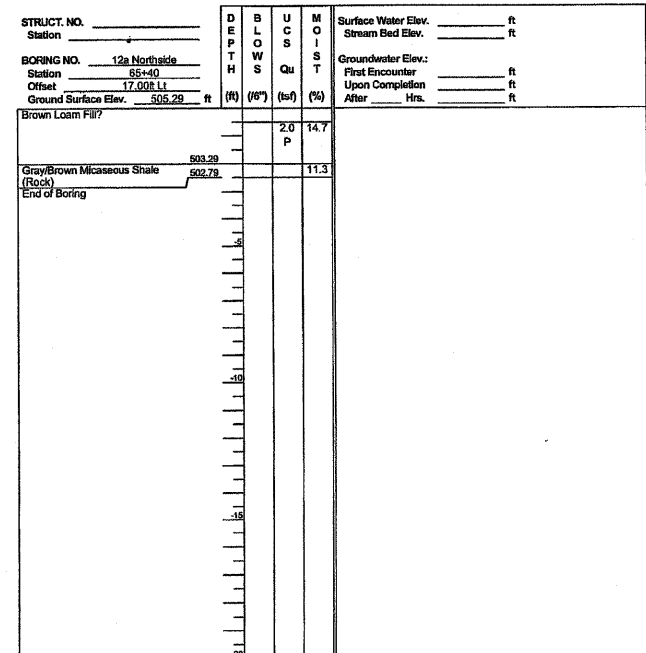
ROCK EXCAVATION FOR STRUCTURES

LOCATION	STATION TO	STATION	ROCK EXCAVATION FOR STRUCTURES CU YD
	65+00.00	TO 67+00.00	186
	67+00.00	TO 71+20.00	102
TOTAL			288



SOIL BORING LOG

ROUTE IL 170 DESCRIPTION North Line Boring LOGGED BY LM-IDOT
 SECTION BRIDGE OVER ILLINOIS RIVER LOCATION SW 1/4, SEC. 25, TWP. 33N, R1NG. 5E, 3rd PM
 COUNTY LASALLE DRILLING METHOD Hammer Type



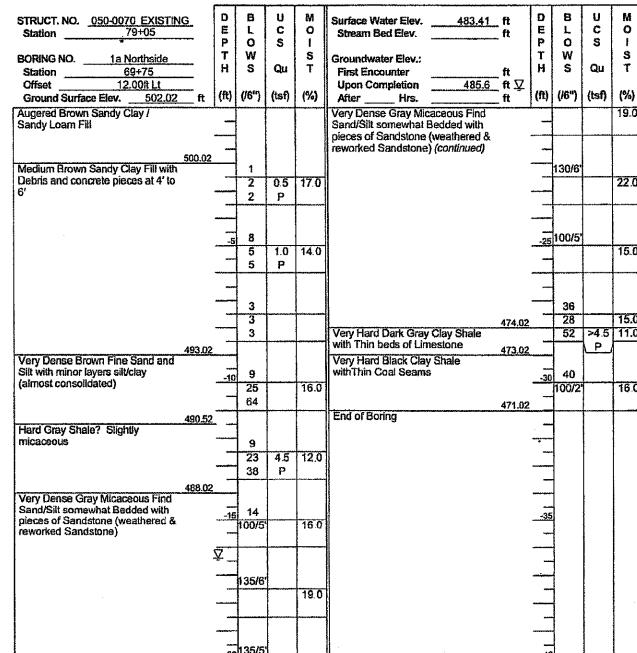
The Unconfined Compressive Strength (UCS) Failure Mode is indicated by (B-Bulge, S-Shear, P-Penetrometer)
 The SPT (N value) is the sum of the last two blow values in each sampling zone (ASTM D1586)

BBS, from 137 (Rev. 8-99)



SOIL BORING LOG

ROUTE IL 170 DESCRIPTION Boring for proposed bridge location LOGGED BY LM-IDOT
 SECTION BRIDGE OVER ILLINOIS RIVER LOCATION SW 1/4, SEC. 25, TWP. 33N, R1NG. 5E, 3rd PM
 COUNTY LASALLE DRILLING METHOD Hollow Stem Auger HAMMER TYPE AUTOMATIC



The Unconfined Compressive Strength (UCS) Failure Mode is indicated by (B-Bulge, S-Shear, P-Penetrometer)
 The SPT (N value) is the sum of the last two blow values in each sampling zone (ASTM D1586)

BBS, from 137 (Rev. 8-99)

REVISIONS

NO.	NAME	DATE
1001		10-30-07

ILLINOIS DEPARTMENT OF TRANSPORTATION

SCHEDULE OF QUANTITIES

SCALE: 1" = 20'
 DATE OCTOBER, 2007

DRAWN BY CJO
 CHECKED BY JCL

REVISED 10-30-07 MJ