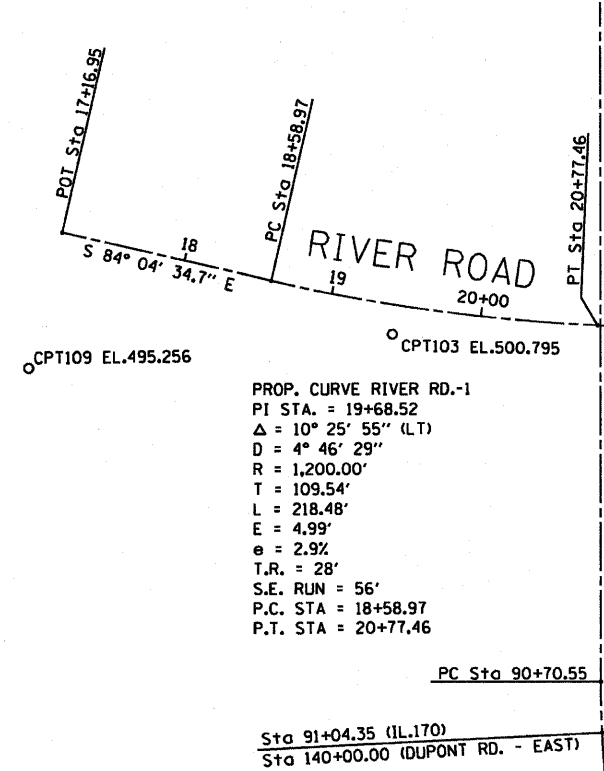




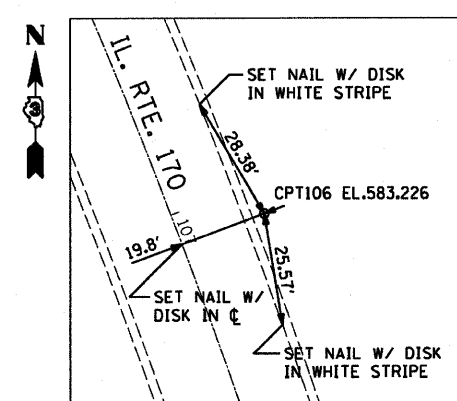
F.A.P. RTE.	SECTION	COUNTY	TOTAL SHEETS	SHEET NO.
786	(109) BR	LASALLE	351	25
STA.		TO STA.		
FED. ROAD DIST. NO.		ILLINOIS FED. AID PROJECT		

ALIGNMENT COORDINATES - DUPONT ROAD			
DUPONT RD	STATION	N	E
POB	140+00.00	86164.9965	58741.9576
PC	141+66.06	86193.5003	58905.5497
PI	142+92.77	86215.2502	59030.3790
PT	144+17.62	86272.4621	59143.4373
PC	147+47.15	86421.2514	59437.4648
PI	149+08.53	86494.1132	59581.4495
PT	150+67.97	86526.3497	59739.5674
PC	153+57.84	86584.2555	60023.5919
PI	153+89.22	86590.5242	60054.3390
PT	154+20.60	86597.3430	60084.9688

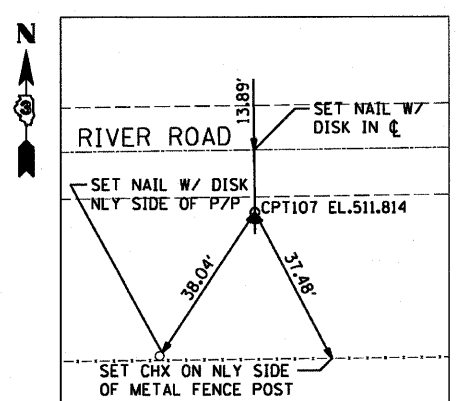
PROP. CURVE RIVER RD.-2  
 PI STA. = 24+06.29  
 $\Delta = 57^\circ 51' 18''$  (RT)  
 $D = 18^\circ 47' 08''$   
 $R = 305.00'$   
 $T = 168.56'$   
 $L = 307.98'$   
 $E = 43.48'$   
 $e = 4.0\%$   
 $T.R. = 28'$   
 $S.E. RUN = 73'$   
 $P.C. STA = 22+37.73$   
 $P.T. STA = 25+45.70$



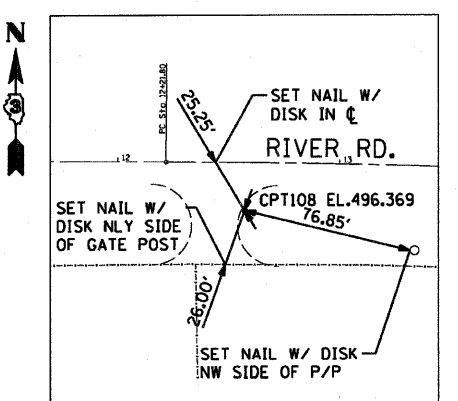
ALIGNMENT COORDINATES - RIVER ROAD			
RIVER RD	STATION	N	E
POB	17+16.95	86450.0380	58346.2740
PC	18+58.97	86435.3806	58487.5393
PI	19+68.52	86424.0751	58596.4990
PT	20+77.46	86432.6854	58705.7048
PC	22+37.73	86445.2827	58865.4796
PI	24+06.29	86458.5316	59033.5180
PT	25+45.70	86323.3022	59134.1432
POT	25+96.00	86282.9520	59164.1680



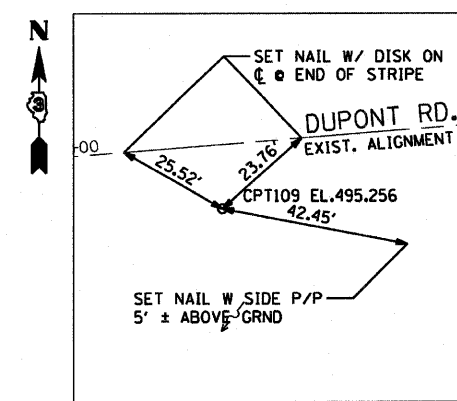
**CONTROL POINT #106**  
 SET 18" #5 REBAR WITH CAP  
 (700' ± S. OF PROJECT LIMITS)  
 N 84921.2530  
 E 59681.3310  
 ELEV. 583.226



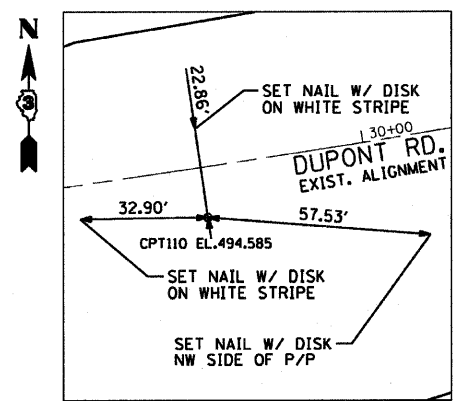
**CONTROL POINT #107**  
 SET 18" #5 REBAR WITH CAP  
 (1230' ± W. OF PROJECT LIMITS)  
 N 86457.0050  
 E 57151.5110  
 ELEV. 511.814



**CONTROL POINT #108**  
 SET 18" #5 REBAR WITH CAP  
 IN GRASS AT EDGE OF DRIVEWAY  
 (820' ± W. OF PROJECT LIMITS)  
 N 86455.5330  
 E 57887.4130  
 ELEV. 496.369



**CONTROL POINT #109**  
 SET 18" #5 REBAR WITH CAP  
 RIVER RD. STA. 24+85.07, 111.01' LT.  
 N 86450.5920  
 E 59167.5790  
 ELEV. 495.256



**CONTROL POINT #110**  
 SET 18" #5 REBAR WITH CAP  
 (NO ID)  
 STA. 149+40.61, 12.52' LT.  
 N 86496.7430  
 E 59583.7900  
 ELEV. 494.5850

10/1/2007  
 MFL  
 ESCALER  
 PROJECT

REVISIONS	
NAME	DATE

ILLINOIS DEPARTMENT OF TRANSPORTATION

**ALIGNMENT & TIES**  
**IL 170 BRIDGE REPLACEMENT AT SENECA**  
**2 OF 2**

SCALE: \_\_\_\_\_  
 DATE: OCTOBER, 2007

DRAWN BY: CJO  
 CHECKED BY: JCL