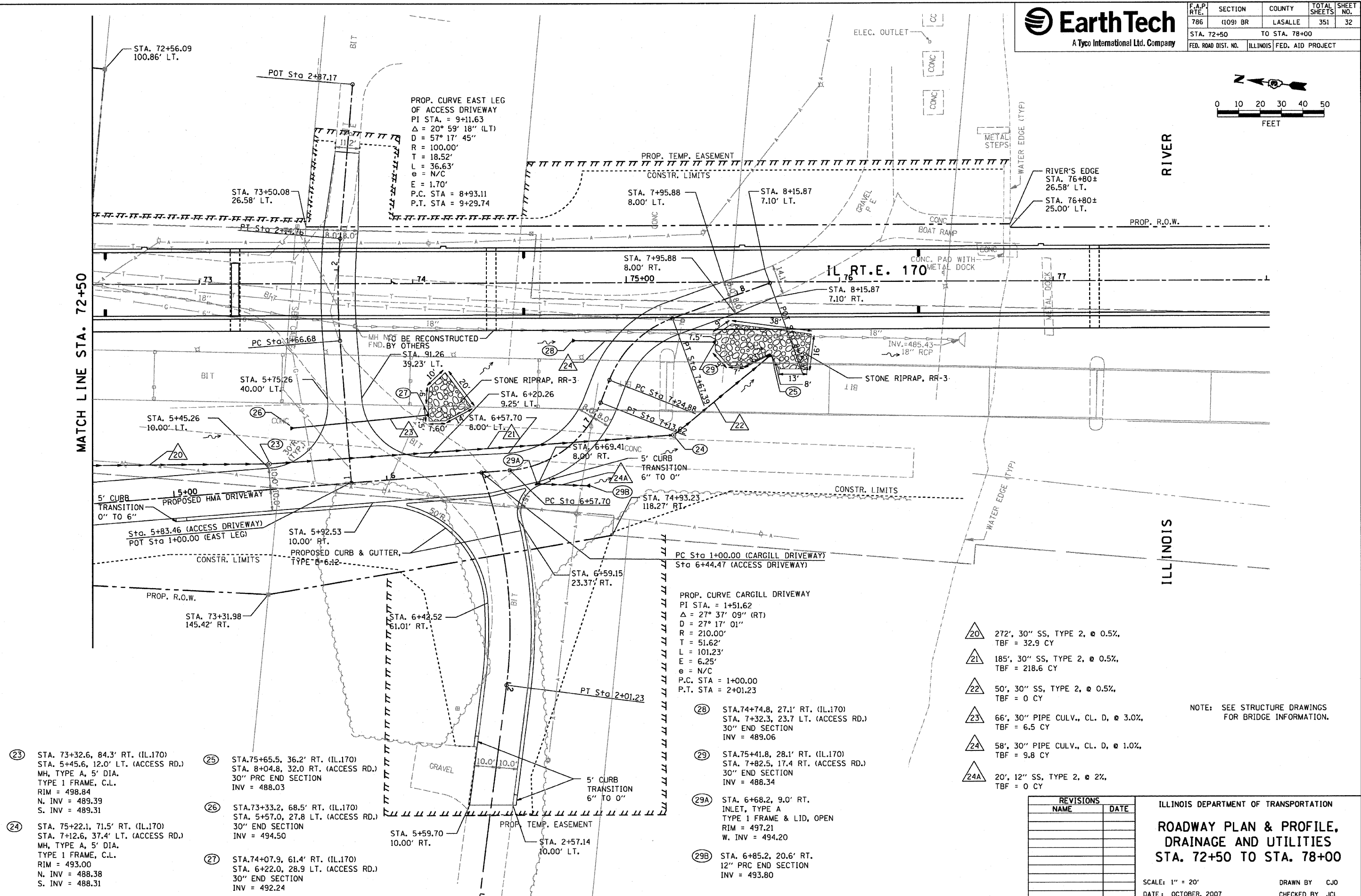
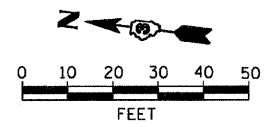




F.A.P. RTE.	SECTION	COUNTY	TOTAL SHEETS	SHEET NO.
786	(109) BR	LASALLE	351	32
STA. 72+50		TO STA. 78+00		
FED. ROAD DIST. NO.		ILLINOIS FED. AID PROJECT		



- (23) STA. 73+32.6, 84.3' RT. (IL.170)  
 STA. 5+45.6, 12.0' LT. (ACCESS RD.)  
 MH, TYPE A, 5' DIA.  
 TYPE 1 FRAME, C.L.  
 RIM = 498.84  
 N. INV = 489.39  
 S. INV = 489.31
- (24) STA. 75+22.1, 71.5' RT. (IL.170)  
 STA. 7+12.6, 37.4' LT. (ACCESS RD.)  
 MH, TYPE A, 5' DIA.  
 TYPE 1 FRAME, C.L.  
 RIM = 493.00  
 N. INV = 488.38  
 S. INV = 488.31

- (25) STA. 75+65.5, 36.2' RT. (IL.170)  
 STA. 8+04.8, 32.0 RT. (ACCESS RD.)  
 30" PRC END SECTION  
 INV = 488.03
- (26) STA. 73+33.2, 68.5' RT. (IL.170)  
 STA. 5+57.0, 27.8 LT. (ACCESS RD.)  
 30" END SECTION  
 INV = 494.50
- (27) STA. 74+07.9, 61.4' RT. (IL.170)  
 STA. 6+22.0, 28.9 LT. (ACCESS RD.)  
 30" END SECTION  
 INV = 492.24

- (28) STA. 74+74.8, 27.1' RT. (IL.170)  
 STA. 7+32.3, 23.7 LT. (ACCESS RD.)  
 30" END SECTION  
 INV = 489.06
- (29) STA. 75+41.8, 28.1' RT. (IL.170)  
 STA. 7+82.5, 17.4 RT. (ACCESS RD.)  
 30" END SECTION  
 INV = 488.34
- (29A) STA. 6+68.2, 9.0' RT.  
 INLET, TYPE A  
 TYPE 1 FRAME & LID, OPEN  
 RIM = 497.21  
 W. INV = 494.20
- (29B) STA. 6+85.2, 20.6' RT.  
 12" PRC END SECTION  
 INV = 493.80

- (20) 272', 30" SS, TYPE 2, @ 0.5%,  
 TBF = 32.9 CY
- (21) 185', 30" SS, TYPE 2, @ 0.5%,  
 TBF = 218.6 CY
- (22) 50', 30" SS, TYPE 2, @ 0.5%,  
 TBF = 0 CY
- (23) 66', 30" PIPE CULV., CL. D, @ 3.0%,  
 TBF = 6.5 CY
- (24) 58', 30" PIPE CULV., CL. D, @ 1.0%,  
 TBF = 9.8 CY
- (24A) 20', 12" SS, TYPE 2, @ 2%,  
 TBF = 0 CY

NOTE: SEE STRUCTURE DRAWINGS FOR BRIDGE INFORMATION.

REVISIONS	
NAME	DATE

ILLINOIS DEPARTMENT OF TRANSPORTATION  
**ROADWAY PLAN & PROFILE,  
 DRAINAGE AND UTILITIES  
 STA. 72+50 TO STA. 78+00**

SCALE: 1" = 20'  
 DATE: OCTOBER, 2007  
 DRAWN BY: CJO  
 CHECKED BY: JCL

DATE = 10/1/2007  
 FILE NAME = 1071170  
 PLOT SCALE = ESCALAR  
 USER NAME = PROJNET