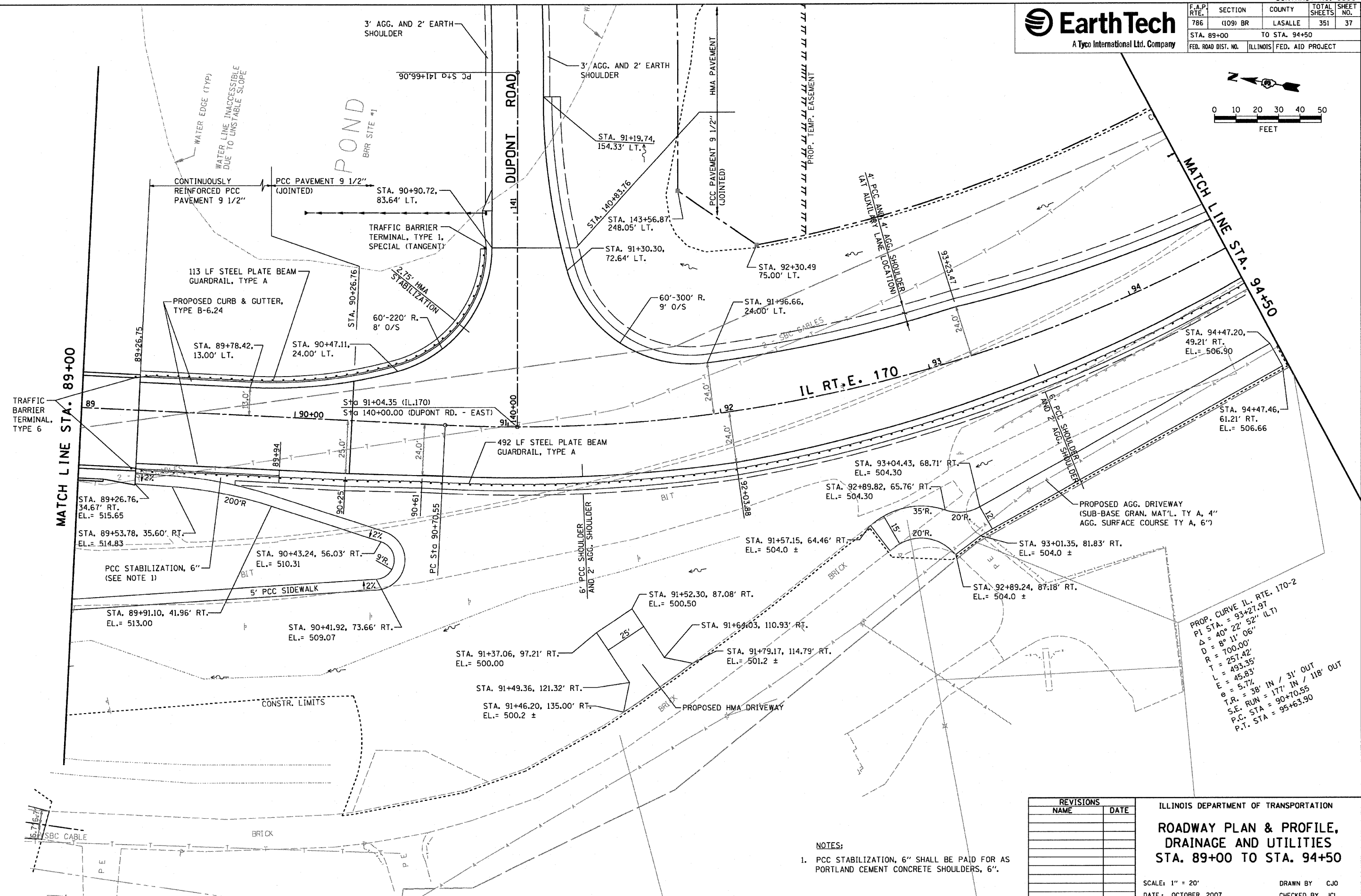
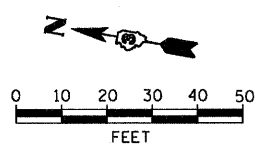




F.A.P. RTE.	SECTION	COUNTY	TOTAL SHEETS	SHEET NO.
786	(109) BR	LASALLE	351	37
STA. 89+00		TO STA. 94+50		
FED. ROAD DIST. NO.		ILLINOIS FED. AID PROJECT		



PROP. CURVE IL. RTE. 170-2
 PI STA. = 93+27.97
 $\Delta = 40^{\circ} 22' 52''$ (LT)
 $D = 8^{\circ} 11' 06''$
 $D = 700.00'$
 $R = 257.42'$
 $L = 493.35'$
 $e = 45.85'$
 $e = 5.7\%$
 $T.R. = 38' IN / 31' OUT$
 $S.E. RUN = 177' IN / 118' OUT$
 $P.C. STA = 90+70.55$
 $P.T. STA = 95+63.90$

REVISIONS	
NAME	DATE

ILLINOIS DEPARTMENT OF TRANSPORTATION
**ROADWAY PLAN & PROFILE,
 DRAINAGE AND UTILITIES
 STA. 89+00 TO STA. 94+50**

SCALE: 1" = 20'
 DATE: OCTOBER, 2007
 DRAWN BY: CJO
 CHECKED BY: JCL

- NOTES:
 1. PCC STABILIZATION, 6" SHALL BE PAID FOR AS PORTLAND CEMENT CONCRETE SHOULDERS, 6".

PLOT DATE = 10/4/2007
 PLOT SCALE = 1" = 20'
 PLOT SCALE = 1" = 20'
 USER NAME = Project