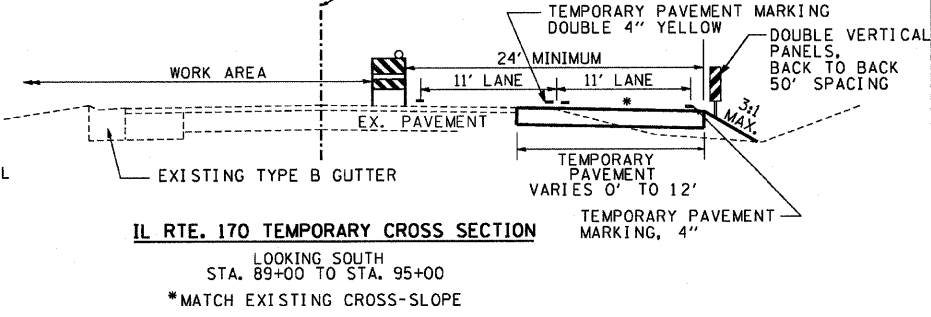
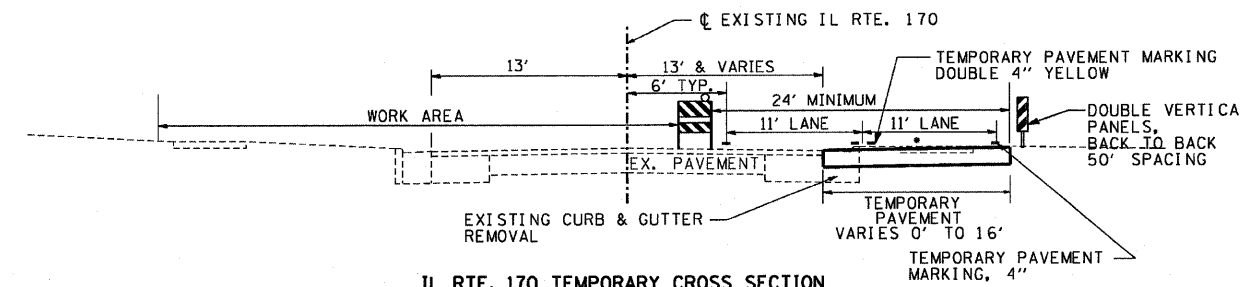
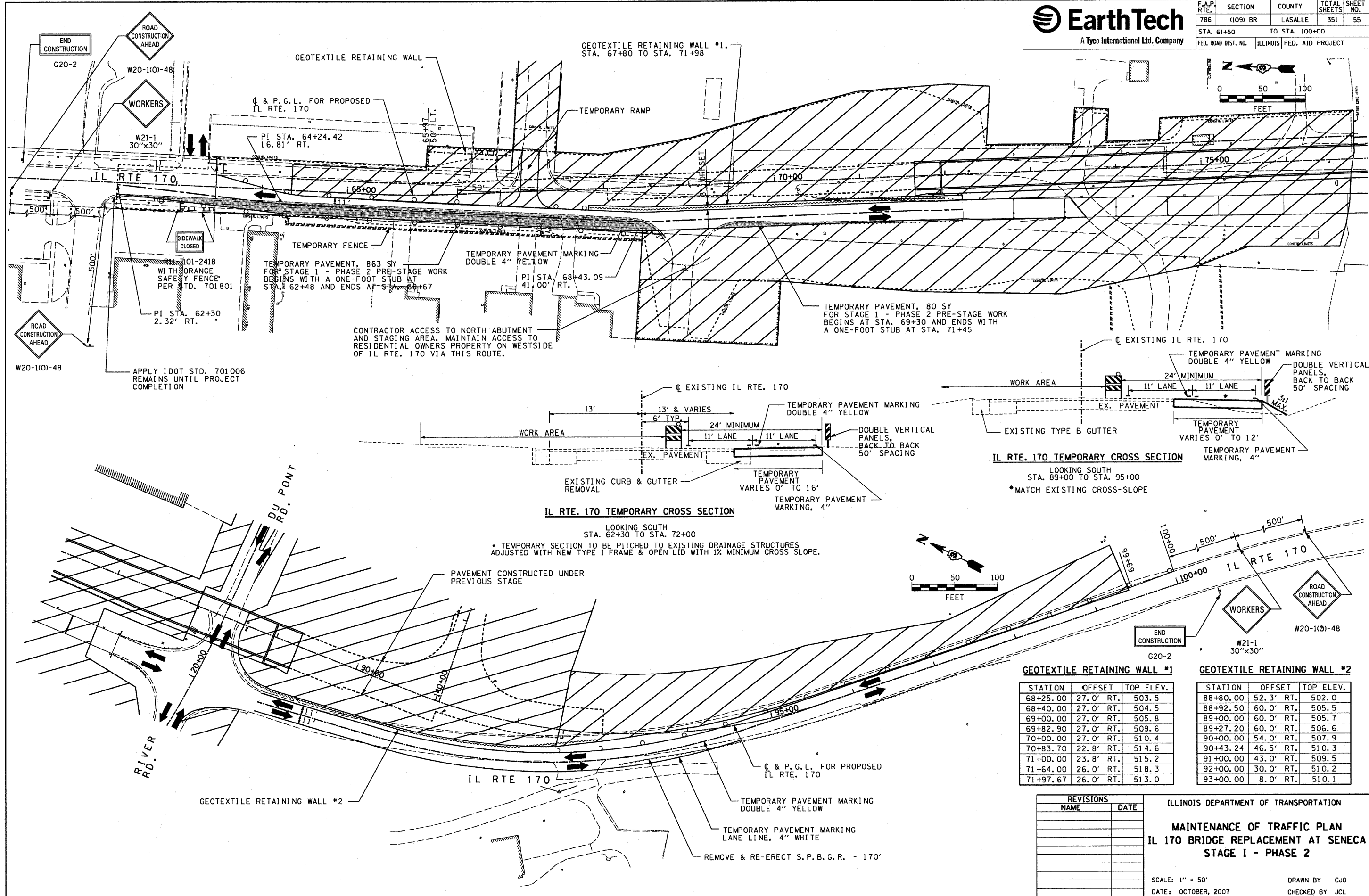




F.A.P. RTE.	SECTION	COUNTY	TOTAL SHEETS	SHEET NO.
786	(109) BR	LASALLE	351	55
STA. 61+50		TO STA. 100+00		
FED. ROAD DIST. NO.		ILLINOIS FED. AID PROJECT		



IL RTE 170 TEMPORARY CROSS SECTION
 LOOKING SOUTH
 STA. 62+30 TO STA. 72+00
 * TEMPORARY SECTION TO BE PITCHED TO EXISTING DRAINAGE STRUCTURES ADJUSTED WITH NEW TYPE I FRAME & OPEN LID WITH 1% MINIMUM CROSS SLOPE.

GEOTEXTILE RETAINING WALL #1

STATION	OFFSET	TOP ELEV.
68+25.00	27.0' RT.	503.5
68+40.00	27.0' RT.	504.5
69+00.00	27.0' RT.	505.8
69+82.90	27.0' RT.	509.6
70+00.00	27.0' RT.	510.4
70+83.70	22.8' RT.	514.6
71+00.00	23.8' RT.	515.2
71+64.00	26.0' RT.	518.3
71+97.67	26.0' RT.	513.0

GEOTEXTILE RETAINING WALL #2

STATION	OFFSET	TOP ELEV.
88+80.00	52.3' RT.	502.0
88+92.50	60.0' RT.	505.5
89+00.00	60.0' RT.	505.7
89+27.20	60.0' RT.	506.6
90+00.00	54.0' RT.	507.9
90+43.24	46.5' RT.	510.3
91+00.00	43.0' RT.	509.5
92+00.00	30.0' RT.	510.2
93+00.00	8.0' RT.	510.1

REVISIONS

NO.	NAME	DATE

ILLINOIS DEPARTMENT OF TRANSPORTATION
MAINTENANCE OF TRAFFIC PLAN
IL 170 BRIDGE REPLACEMENT AT SENECA
STAGE I - PHASE 2
 SCALE: 1" = 50'
 DATE: OCTOBER, 2007
 DRAWN BY: CJO
 CHECKED BY: JCL

PLOT DATE = 10/14/2007
 PLOT SCALE = AS SHOWN
 USER NAME = PROJECT