

STATE OF ILLINOIS
DEPARTMENT OF TRANSPORTATION

F.A.P. ROUTE NO.	SECTION	COUNTY	TOTAL SHEETS	SHEET NO.
786	109 BR	La Salle	351	193
FED. ROAD DIST. NO. 7	ILLINOIS	FED. AID PROJECT		

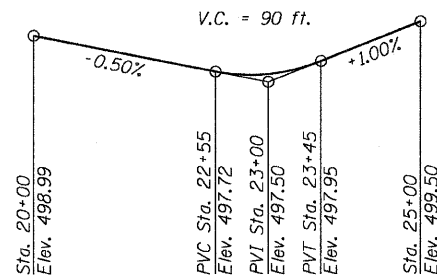
Contract #66607

GENERAL NOTES

Reinforcement bars shall conform to the requirements of ASTM A 706 Gr 60 (IL Modified). See Special Provisions.
Reinforcement bars designated (E) shall be epoxy coated.
All exposed concrete edges shall have a 3/4" chamfer, except where shown otherwise. Chamfer on vertical edges shall be continued a minimum of one foot below finished ground level.

TOTAL BILL OF MATERIAL

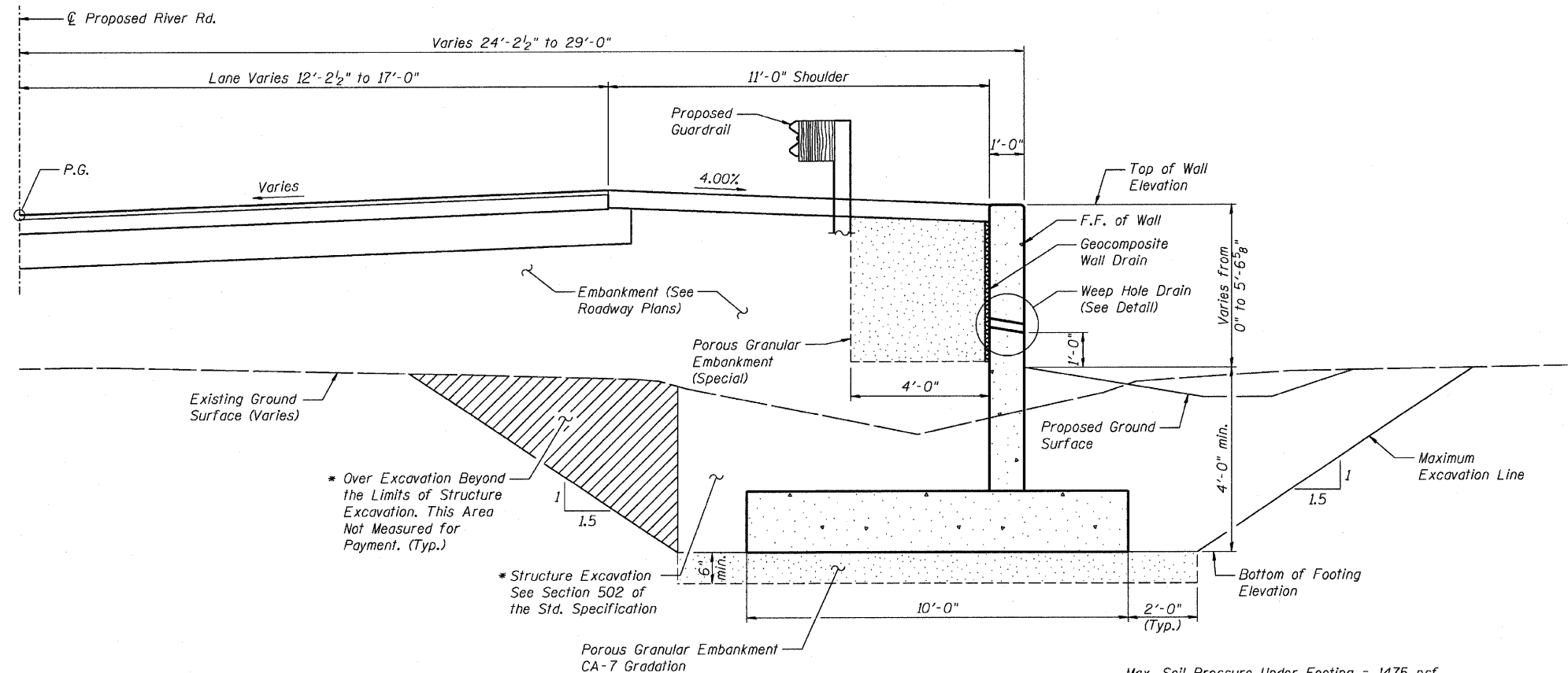
ITEM	UNIT	TOTAL
Structure Excavation	Cu. Yd.	704
Porous Granular Embankment	Cu. Yd.	78
Porous Granular Embankment (Special)	Cu. Yd.	162
Concrete Structures	Cu. Yd.	280.4
Reinforcement Bars, Epoxy Coated	Pound	16860
Geocomposite Wall Drain	Sq. Yd.	122



PROFILE GRADE
(along Proposed River Rd.)

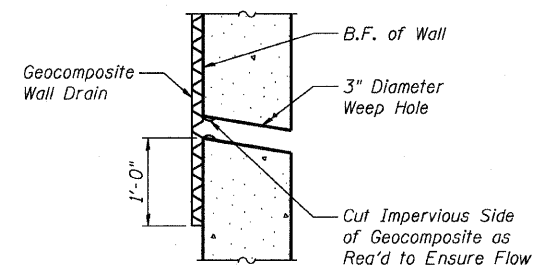
CURVE DATA

Δ = 57° 51' 18" (RT)
D = 18° 47' 08"
T = 168.56'
L = 307.98'
E = 43.48'
R = 305.00'
S.E. = See S.E. Transition Diagram
P.C. = Sta. 22+37.73
P.T. = Sta. 25+45.70
P.I. = Sta. 24+06.29

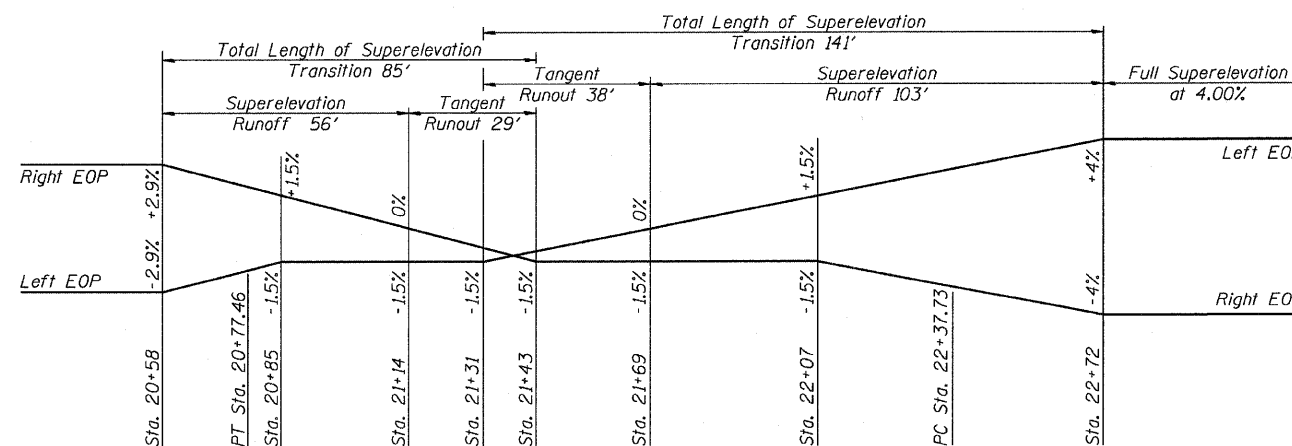


TYPICAL WALL SECTION
(Looking West)

Max. Soil Pressure Under Footing = 1475 psf



WEEP HOLE DRAIN DETAIL



SUPERELEVATION TRANSITION DIAGRAM

DESIGNED	JVR
CHECKED	DLS
DRAWN	JVR
CHECKED	DLS



GENERAL DATA
RETAINING WALL
RIVER ROAD
SECTION 109 BR
LA SALLE COUNTY