

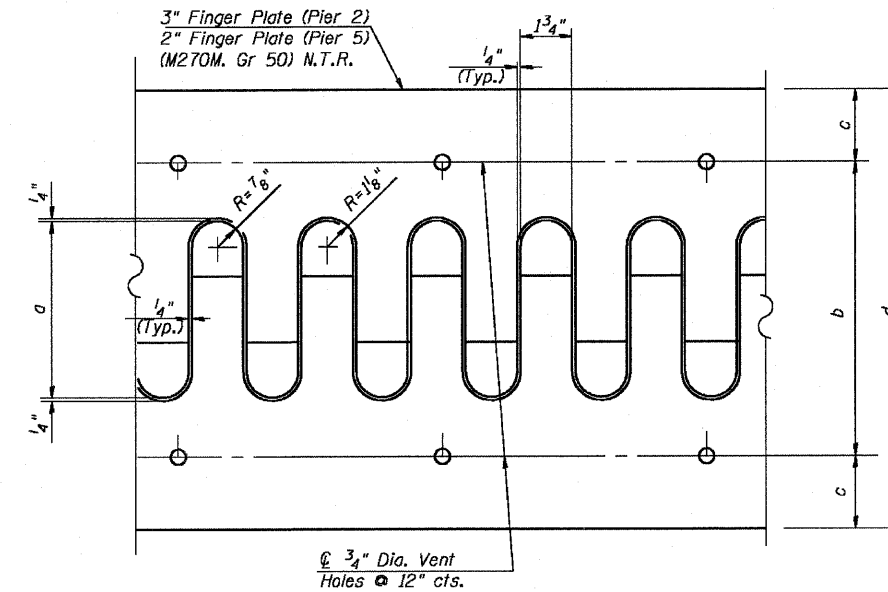
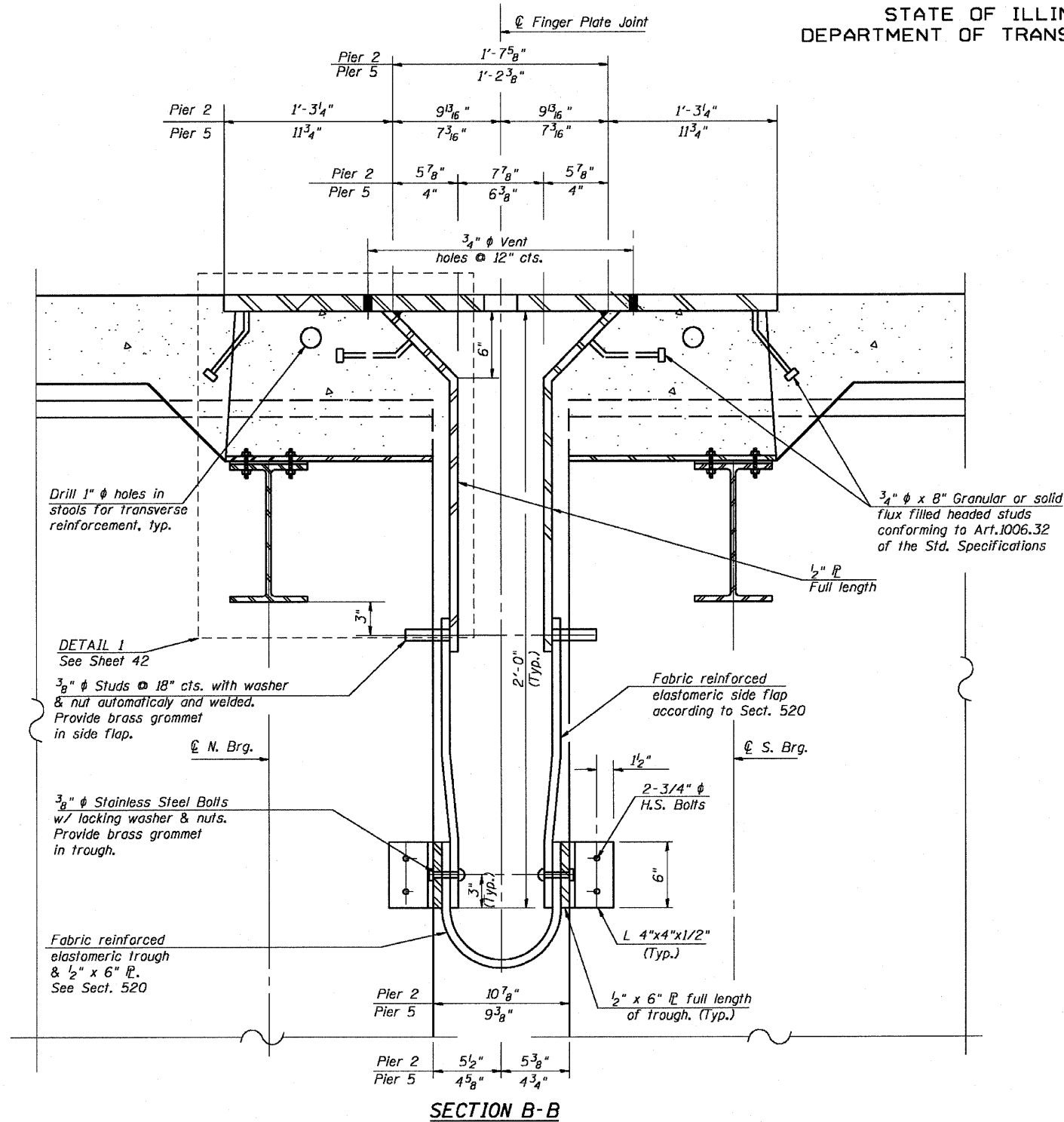
STATE OF ILLINOIS  
DEPARTMENT OF TRANSPORTATION



F.A.P. ROUTE NO.	SECTION	COUNTY	TOTAL SHEETS	SHEET NO.
786	109 BR	La Salle	351	241
FED. ROAD DIST. NO. 7	ILLINOIS	FED. AID PROJECT-		

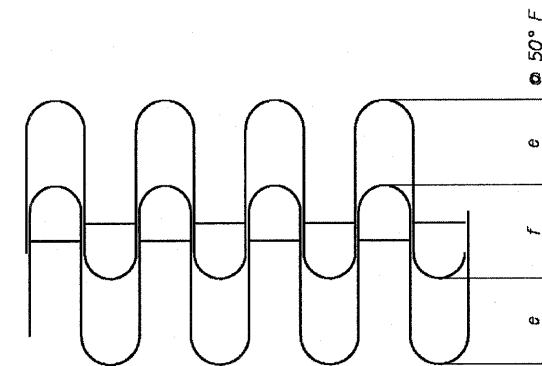
SHEET NO. 41  
89 SHEETS

Contract # 66607



**FLAME CUTTING DIAGRAM**

Cut from  $\bar{P}$  3" x 3'-8 1/2" x 37'-2 1/2" (Pier 2)  
Cut from  $\bar{P}$  2" x 2'-10" x 37'-2 1/2" (Pier 5)



**FINGER PLATE SETTING DIAGRAM**

Notes:

1. Work this sheet with Sheets 39, 40 & 42.
2. M 270 Grade 50W steel shall be used for the finger plates and attachments.
3. Finger plate expansion joints shall be assembled in their final relative position with the ends in place for shop inspection and acceptance.

**TABLE OF VARIABLES**

LOCATION	a	b	c	d	e	f
Pier 2	1'-0 1/2"	1'-8 1/4"	1'-0 1/4"	3'-8 3/4"	5 1/8"	6 3/4"
Pier 5	8 3/4"	1'-4 1/2"	8 3/4"	2'-10"	4 1/8"	4 7/8"

DESIGNED - CLS
CHECKED - DEV
DRAWN - JHR
CHECKED -

**FINGER PLATE EXP. JT. DETAILS 1  
AT PIERS 2 & 5  
IL. 170 F.A.P. 786 OVER  
ILLINOIS RIVER AT SENECA  
PUBLIC WATERS  
LA SALLE COUNTY, SECTION 109 BR  
STATION 79+04.42  
STRUCTURE NO. 050-0246**