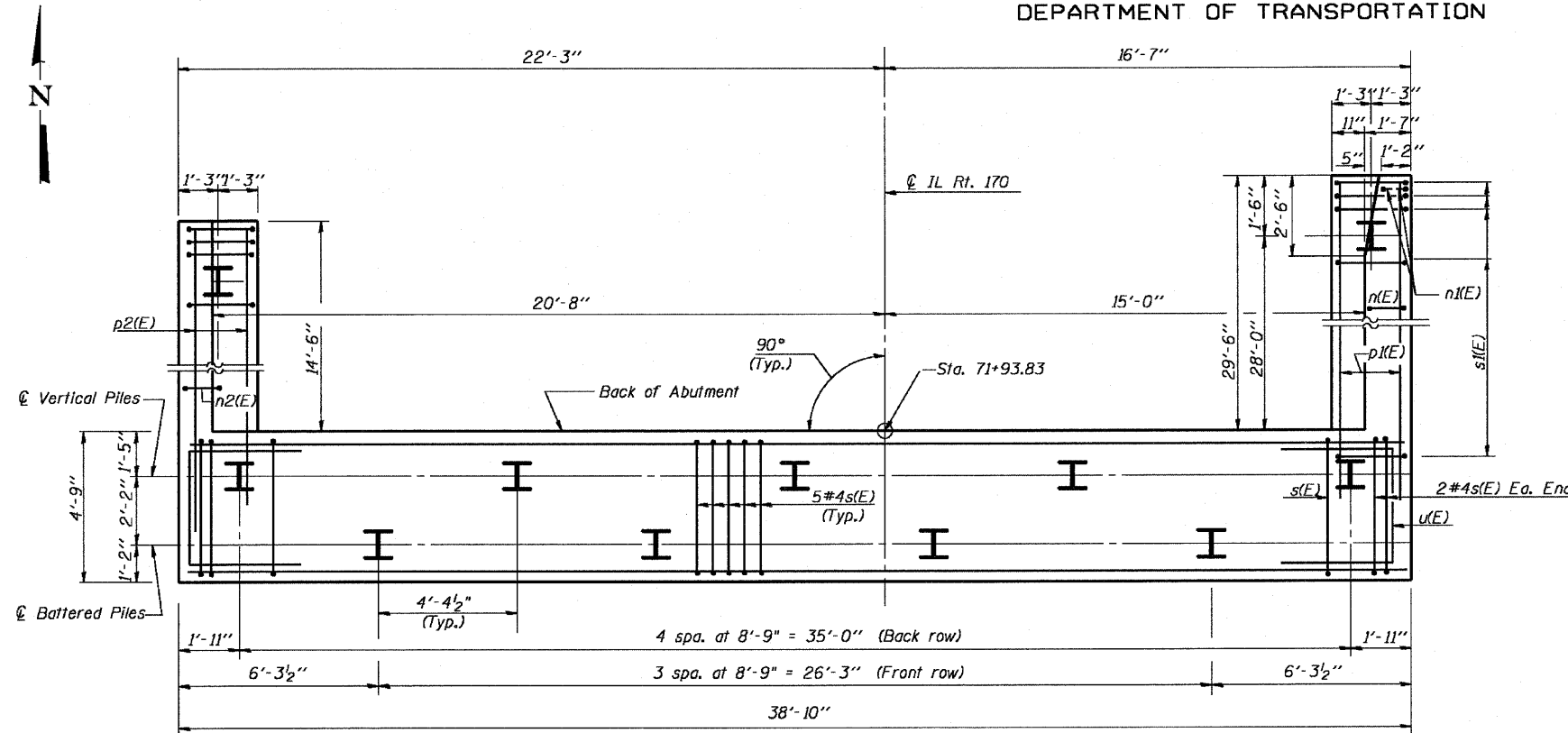
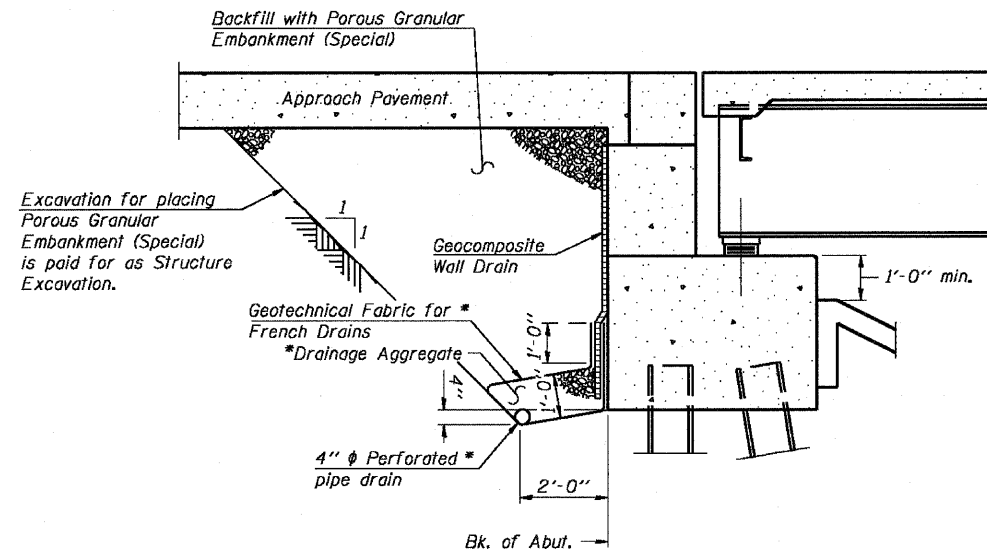


Contract # 66607



PLAN-PILE CAP



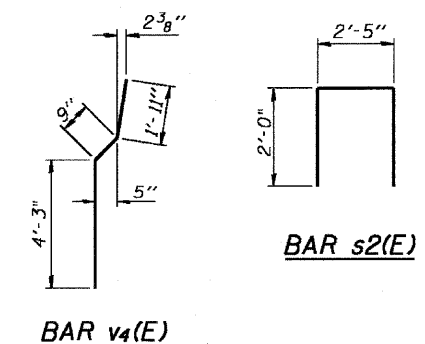
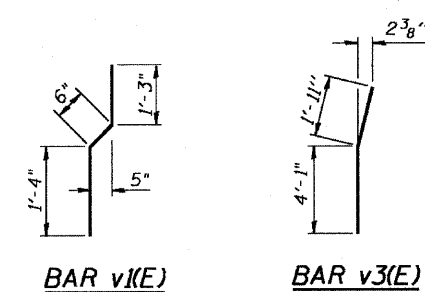
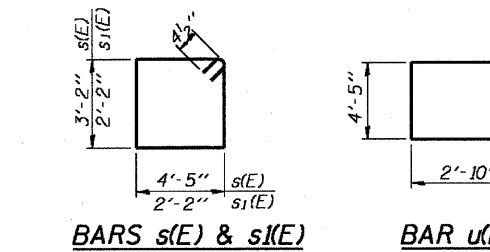
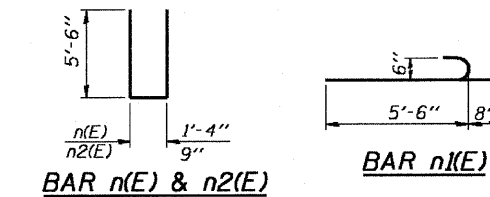
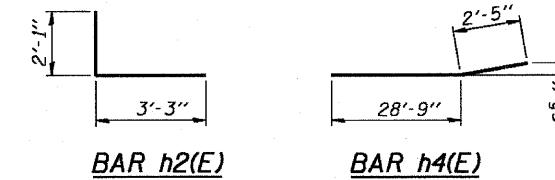
SECTION THRU ABUTMENT

(Showing Backfill and Drainage System)

* Included in the cost of Pipe Underdrains for Structures.

Note:
All drainage system components shall extend to 2'-0" from the end of each wingwall except an outlet pipe shall extend until intersecting with the side slope. The pipes shall drain into concrete headwalls. (See Article 601.05 of the Standard Specifications and Highway Standard 60110).

DESIGNED - RJC
CHECKED - CLS
DRAWN - JHR
CHECKED - RJC



**N. ABUTMENT
BILL OF MATERIAL**

Bar	No.	Size	Length	Shape
n(E)	12	#5	35'-6"	—
h2(E)	4	#6	35'-10"	—
h3(E)	13	#4	5'-4"	—
h4(E)	9	#4	31'-2"	—
h5(E)	3	#5	6'-3"	—
h6(E)	12	#5	16'-2"	—
n(E)	29	#6	12'-4"	—
n1(E)	6	#6	6'-2"	—
n2(E)	17	#6	11'-9"	—
p(E)	8	#7	38'-6"	—
p1(E)	6	#7	32'-6"	—
p2(E)	6	#7	17'-6"	—
s(E)	44	#4	15'-11"	—
s1(E)	49	#4	9'-5"	—
s2(E)	6	#5	6'-5"	—
u(E)	8	#6	10'-1"	—
v(E)	36	#5	3'-0"	—
v1(E)	36	#4	3'-1"	—
v2(E)	36	#4	8'-4"	—
v3(E)	3	#6	6'-0"	—
v4(E)	29	#6	7'-7"	—
v5(E)	32	#6	7'-7"	—
v6(E)	17	#6	11'-1"	—

Structure Excavation	Cu. Yd.	173
Concrete Structures	Cu. Yd.	62
Reinforcement Bars, Epoxy Coated	Pound	5940
Furnishing Steel Piles HP 12x74	Foot	474
Driving Piles	Foot	474
Test Piles	Each	1
Porous Granular Embankment (Special)	Cu. Yd.	104
Pipe Underdrains for Structure	L.F.	122
Geocomposite Wall Drain	Sq. Ft.	729
Pile Shoes	EA.	11
Bar Splicer (E) for #5 Bar	EA.	36

Reinforcement bars designated (E) shall be epoxy coated.

PILE DATA

Type: HP12x74 with Pile Shoes
Nominal Req'd Bearing = 589K
Allowable Resistance Available = 156K
Est. Length: 47
No. Required: 10
No. Test Piles: 1

NORTH ABUTMENT DETAILS 1

**IL. 170 F.A.P. 786 OVER
ILLINOIS RIVER AT SENECA
PUBLIC WATERS
LA SALLE COUNTY, SECTION 109 BR
STATION 79+04.42
STRUCTURE NO. 050-0246**