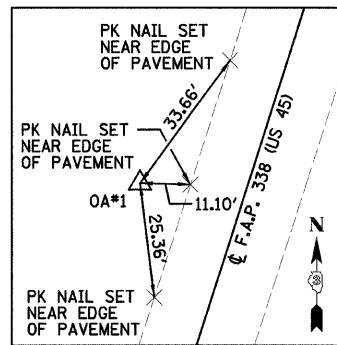
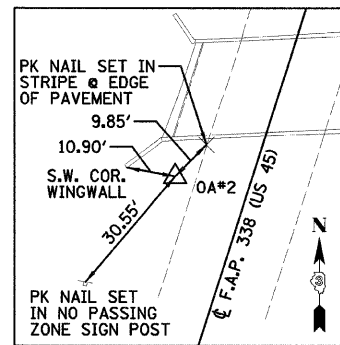


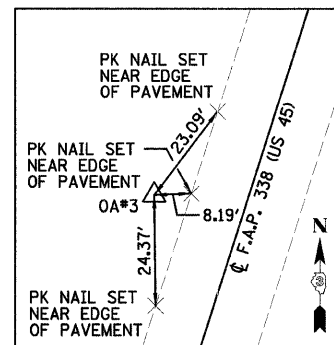
F.A.P. RTE.	SECTION	COUNTY	TOTAL SHEETS	SHEET NO.
338	33 BR-1	IROQUOIS	27	7
STA.		TO STA.		
FED. ROAD DIST. NO.	ILLINOIS	FED. AID PROJECT		



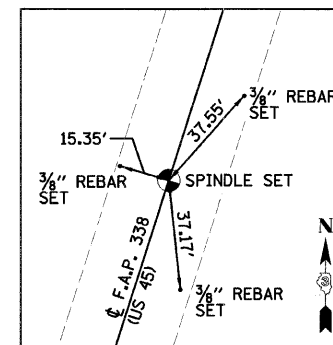
U.S. 45
 STA 2366+12.65, 22.75' RT
 NORTHING 1399249.990
 EASTING 1055887.219



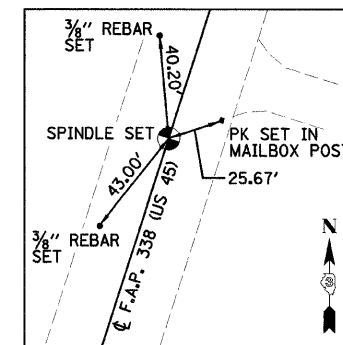
U.S. 45
 STA 2373+16.36, 16.25' RT
 NORTHING 1398577.870
 EASTING 1055678.672



U.S. 45
 STA 2378+41.85, 19.95' RT
 NORTHING 1398078.606
 EASTING 1055514.816



U.S. 45
 STA 2365+00.00, 0.00' RT/LT
 NORTHING 1399350.327
 EASTING 1055943.255



U.S. 45
 STA 2380+00.00, 0.00' RT/LT
 NORTHING 1397921.870
 EASTING 1055485.534

BENCHMARK OA*1
 STA 2366+12.65, 22.75' RT
 ELEV=767.11
 BAR SET FLUSH, ±11.0'
 WEST OF WEST EDGE OF
 PAVEMENT

BENCHMARK OA*2
 STA 2373+16.36, 16.25' RT
 ELEV=755.05
 BAR SET FLUSH, S.W. QUAD.
 OF BRIDGE ±4.5' WEST OF
 WEST EDGE OF PAVEMENT

BENCHMARK OA*3
 STA 2378+41.85, 19.95' RT
 ELEV=767.80
 BAR SET FLUSH, ±7.5'
 WEST OF WEST EDGE OF
 PAVEMENT

REVISIONS	
NAME	DATE

ILLINOIS DEPARTMENT OF TRANSPORTATION
 SURVEY TIES AND BENCHMARKS
 F.A.P. 338 (US 45)
 OVER A DITCH
 SECTION 33 BR-1
 IROQUOIS COUNTY

DATE: 12/07/07
 DRAWN BY: DJM
 CHECKED BY: MSW