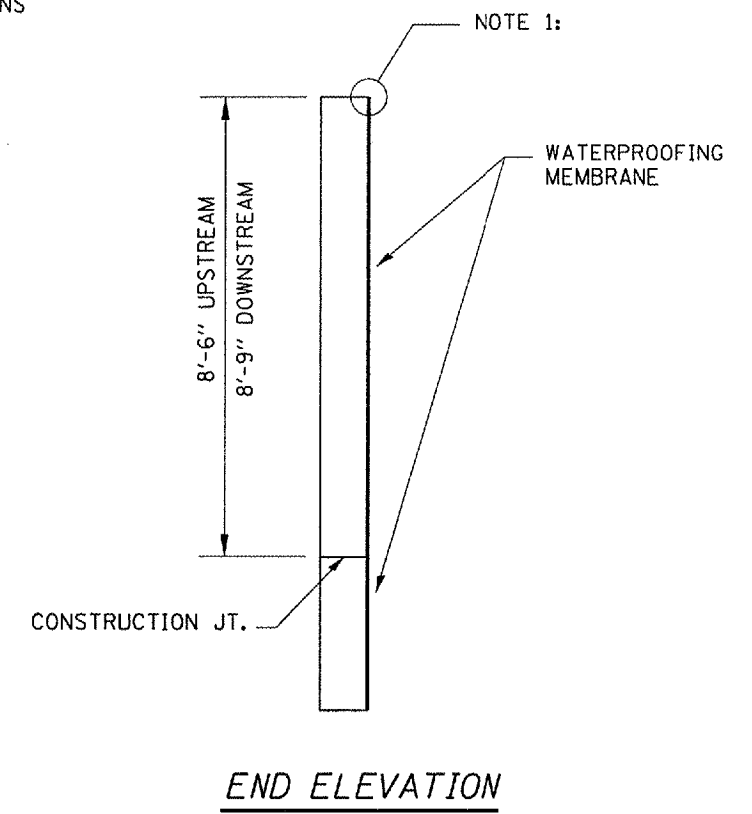
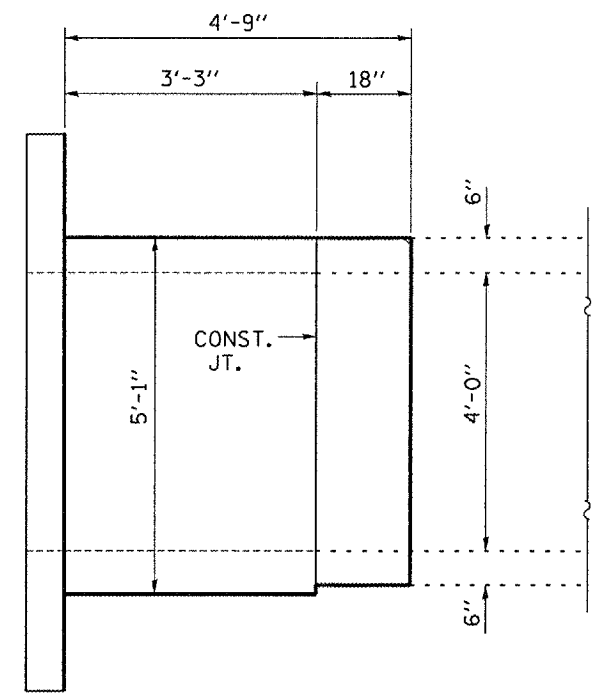


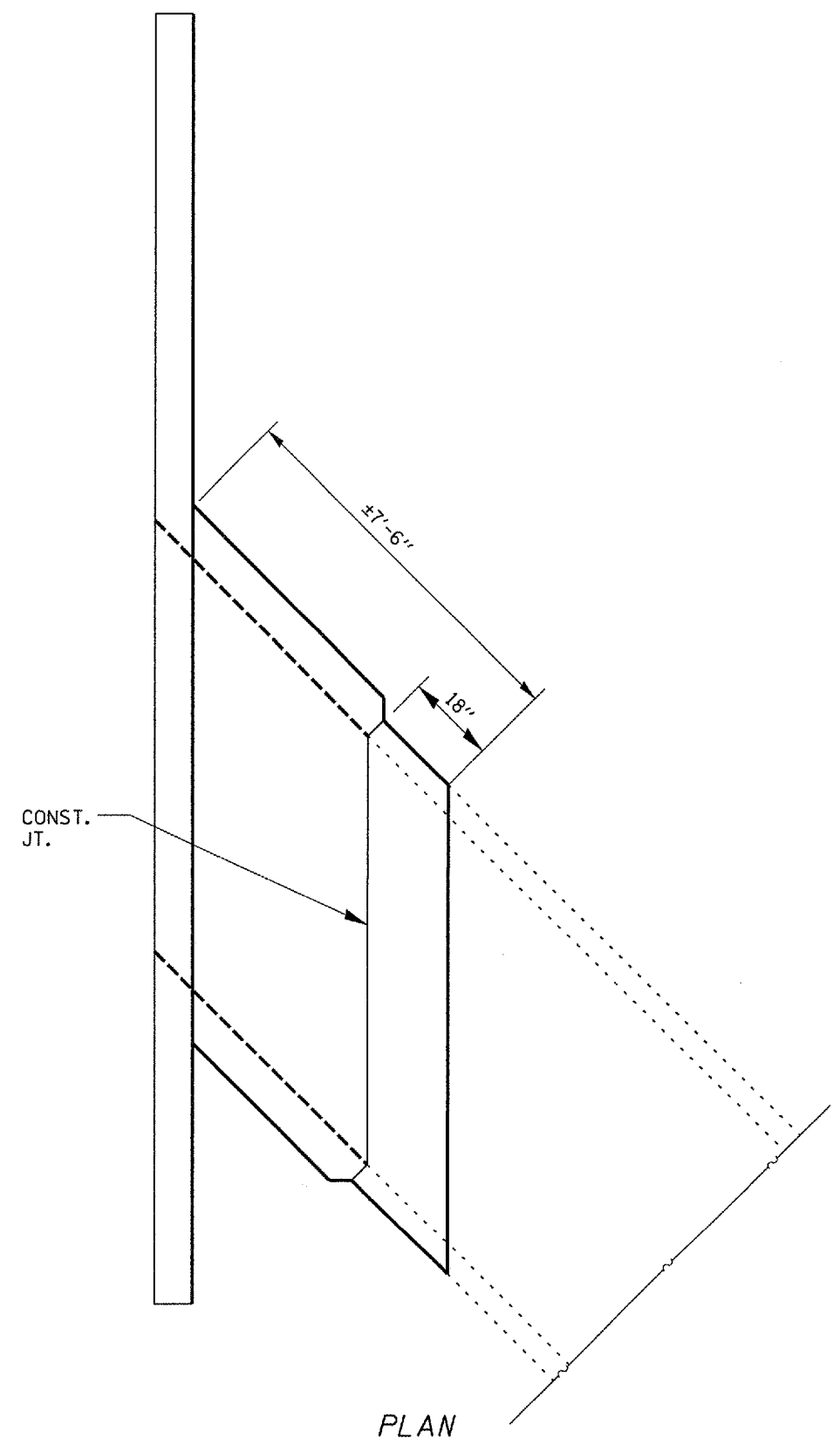
NOTE 1: SEAL JOINT PER MANUFACTURER'S RECOMENDATIONS



END ELEVATION



SIDE ELEVATION



PLAN

DOWNSTREAM END SHOWN  
UPSTREAM END SIMILIAR

**BILL OF MATERIAL  
UPSTREAM**

SHEET WATERPROOFING	SQ. YD.	32
MEMBRANE SYSTEM		

**BILL OF MATERIAL  
DOWNSTREAM**

SHEET WATERPROOFING	SQ. YD.	35
MEMBRANE SYSTEM		

NOTES:

THE EXPOSED SURFACES AS INDICATED SHALL BE PROTECTED BY THE WATERPROOFING MEMBRANE AS PER THE MANUFACTURER'S RECOMENDATIONS.

A MANUFACTURER'S REPRESENTATIVE SHALL BE ON SITE DURING THE INSTALLATION OF THE WATERPROOFING MEMBRANE TO PROVIDE TECHNICAL SUPPORT WHEN REQUIRED. ALL COST INCURRED DUE TO THE ON-SITE REPRESENTATIVE SHALL NOT BE PAID FOR SEPARATELY BUT SHALL BE INCLUDED IN THE UNIT COST OF THE WATERPROOFING MEMBRANE WORK.

THE CONTRACTOR SHALL INSTALL THE WATERPROOFING MEMBRANE ACCORDING TO THE MANUFACTURER'S RECOMMENDATIONS, PLAN DETAILS AND AS DIRECTED BY THE ENGINEER.

FAP ROUTE 316 (IL 26)  
SECTION (114)I  
BUREAU COUNTY  
STA. 1061+80  
S.N. 006-2515

FILE NAME =	USER NAME = woodshankr1	DESIGNED - RON WOODSHANK	REVISED -	<b>STATE OF ILLINOIS DEPARTMENT OF TRANSPORTATION</b>	<b>SHEET WATERPROOFING</b>	F.A.P. RTE.	SECTION	COUNTY	TOTAL SHEETS	SHEET NO.	
os\projects\main\88\lan314\details.dgn		DRAWN - RON WOODSHANK	REVISED -			316	(114)I	BUREAU	14	13	
	PLOT SCALE = 1/8" = 1'-0"	CHECKED -	REVISED -			CONTRACT NO. 66729					
	PLOT DATE = Dec 12, 2007 - 07:42:58 AM	DATE -	REVISED -			FED. ROAD DIST. NO. - ILLINOIS					
				SCALE: _____		SHEET NO. 1 OF 6 SHEETS		STA. 1061+00 TO STA. 1063+00			