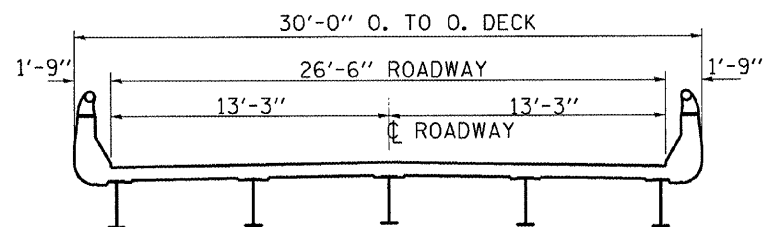


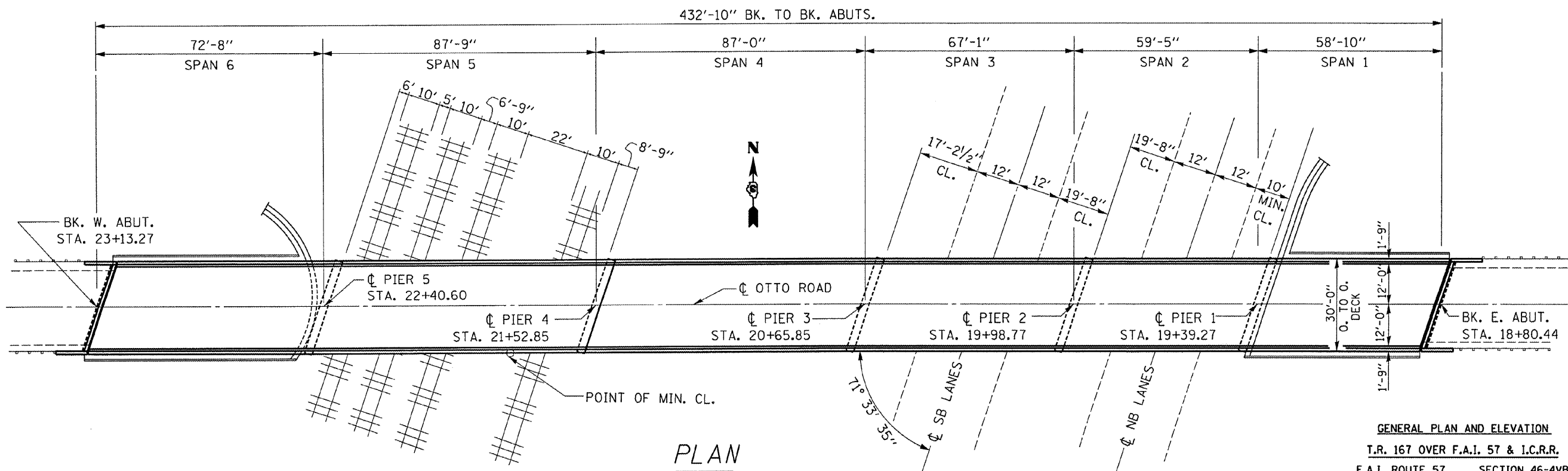
ELEVATION



CROSS SECTION

TOTAL BILL OF MATERIALS
S.N. 046-0089

ITEM		TOTAL
CLEANING AND PAINTING STEEL BRIDGE NO. 2	L SUM	1
CONTAINMENT AND DISPOSAL OF LEAD PAINT	L SUM	1
CLEANING RESIDUES NO. 2		
BRIDGE CLEANING AND PAINTING WARRANTY NO. 2	L SUM	1



PLAN

GENERAL PLAN AND ELEVATION
T.R. 167 OVER F.A.I. 57 & I.C.R.R.
F.A.I. ROUTE 57 SECTION 46-4VB
KANKAKEE COUNTY
STA. 547+89.82
S.N. 046-0089

FILE NAME =	USER NAME = woodshankr1	DESIGNED - RON WOODSHANK	REVISED -
c:\projects\bridgepaint_08\046-0081 & 8	dgn	DRAWN - RON WOODSHANK	REVISED -
PLOT SCALE = 206.8056' / IN.	CHECKED -	REVISED -	REVISED -
PLOT DATE = Dec 26, 2007 - 10:48:39 AM	DATE -	REVISED -	REVISED -

STATE OF ILLINOIS
DEPARTMENT OF TRANSPORTATION

PLAN AND ELEVATION - S.N. 046-0089

SCALE: SHEET NO. 10 OF 12 SHEETS

F.A.I. RTE. 57	SECTION 46(4)VB,4B1BP	COUNTY KANKAKEE	TOTAL SHEETS 12	SHEET NO. 10
FED. ROAD DIST. NO. ILLINOIS			CONTRACT NO. 66738	