

RTE.	SECTION	COUNTY	TOTAL SHEETS	SHEET NO.
SBI 7C	(13 & 14)RS	BUREAU	8	1
FED. ROAD DIST. NO.	ILLINOIS	CONTRACT NO.	66761	

**STATE OF ILLINOIS**  
**DEPARTMENT OF TRANSPORTATION**  
**DIVISION OF HIGHWAYS**  
**PROPOSED**  
**HIGHWAY PLANS**

**INDEX OF SHEETS**

- 1 COVER SHEET
- 2 GENERAL NOTES
- 3 SUMMARY OF QUANTITIES
- 4-5 TYPICAL SECTIONS
- 6 SCHEDULES
- 7 PROJECT LAYOUT
- 8 PAVEMENT MARKING DETAIL

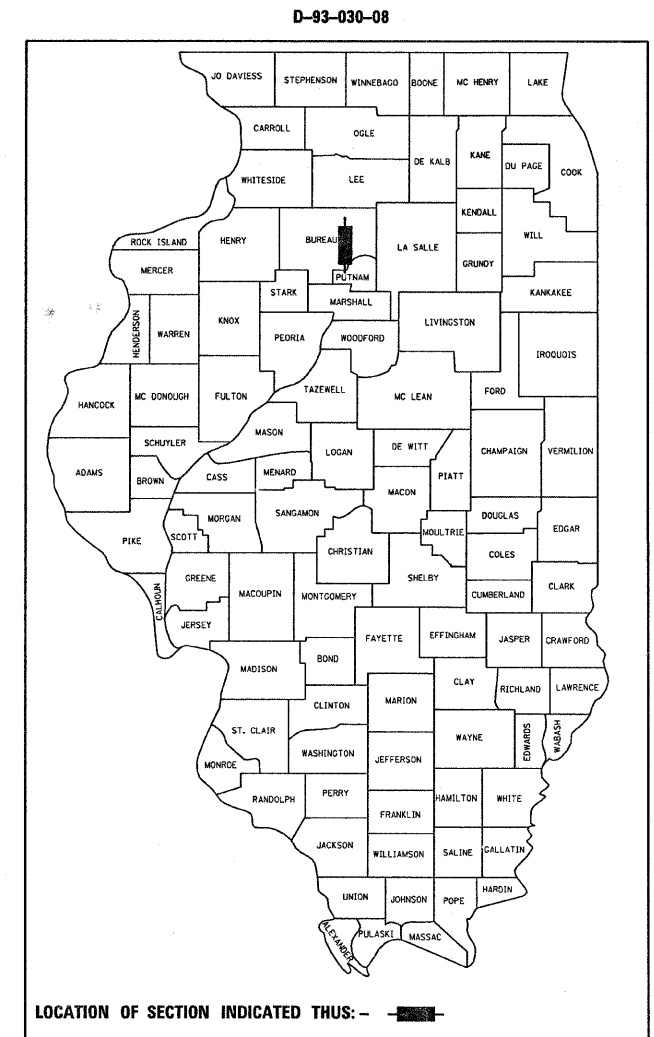
**STANDARDS**

- 000001-05 STANDARD SYMBOLS, ABBREVIATIONS AND PATTERNS
- 667101 PERMANENT SURVEY MARKERS
- 701301-02 LANE CLOSURE, 2L, 2W, SHORT TIME OPERATIONS
- 701306-01 LANE CLOSURE, 2L, 2W, SLOW MOVING OPERATIONS DAY ONLY, FOR SPEEDS ≥ 45 MPH
- 701311-02 LANE CLOSURE, 2L, 2W, MOVING OPERATIONS - DAY ONLY
- 701901 TRAFFIC CONTROL DEVICES
- 780001-01 TYPICAL PAVEMENT MARKINGS
- 781001-02 TYPICAL APPLICATIONS RAISED REFLECTIVE PAVEMENT MARKERS

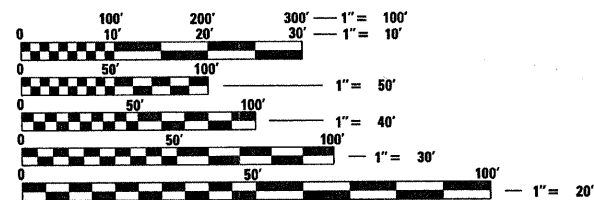
**SBI 7C DEPUE SPUR**  
**SECTION (13 & 14)RS**

**BUREAU COUNTY**

**C - 93 - 053 - 08**  
**CAPE SEAL RESURFACING FROM**  
**US 6 TO IL 29 NEAR DEPUE**



MICROFILMED \_\_\_\_\_  
 REEL NUMBER \_\_\_\_\_  
 AWARDED \_\_\_\_\_  
 RESIDENT ENGINEER \_\_\_\_\_  
 AS BUILT CHANGES WERE MADE  
 ON THE FOLLOWING SHEETS \_\_\_\_\_



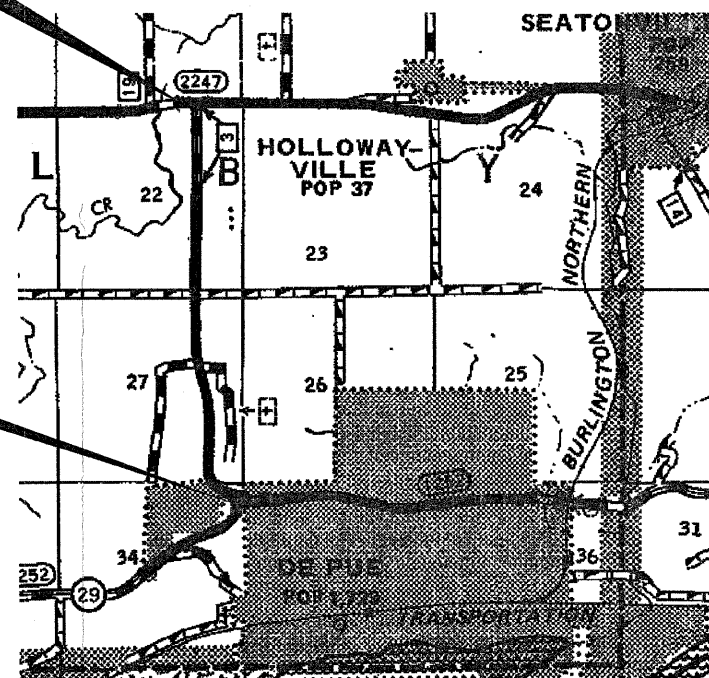
FULL SIZE PLANS HAVE BEEN PREPARED USING STANDARD ENGINEERING SCALES. REDUCED SIZED PLANS WILL NOT CONFORM TO STANDARD SCALES. IN MAKING MEASUREMENTS ON REDUCED PLANS, THE ABOVE SCALES MAY BE USED.

J.U.L.I.E.  
 JOINT UTILITY LOCATION INFORMATION FOR EXCAVATION  
 1-800-892-0123  
 OR 811

**PROJECT ENGINEER: JOE KANNEL**  
**UNIT CHIEF: NATHAN SELL /MICHELE LINDEMANN**  
 DISTRICT 3 NO. (815) 434-6131  
**CONTRACT NO. 66761**

**BEGIN IMPROVEMENT**  
**STA 0+12**

**END IMPROVEMENT**  
**STA 120+74**



GROSS LENGTH = 12,062 FT. = 2.284 MI.  
 NET LENGTH = 12,062 FT. = 2.284 MI.

**FUNCTIONAL CLASSIFICATION**  
**RURAL MAJOR COLLECTOR**  
 2007 ADT = 1194

STATE OF ILLINOIS  
 DEPARTMENT OF TRANSPORTATION  
 DIVISION OF HIGHWAYS

SUBMITTED 12/13 20 07

*George F. Ryan*  
 DEPUTY DIRECTOR OF HIGHWAYS, REGION ENGINEER  
 February 1, 20 08

*Eric E. Harsh*  
 ENGINEER OF DESIGN AND ENVIRONMENT  
 February 1, 20 08

*Christine M. Reed*  
 DIRECTOR OF HIGHWAYS, CHIEF ENGINEER

**PRINTED BY THE AUTHORITY**  
**OF THE STATE OF ILLINOIS**

PLOT DATE = Dec 11, 2007 - 01:27:08 PM  
 FILE NAME = c:\projects\ed03008\ed03008\plansheets.dgn  
 PLOT SCALE = 47.82617 / IN.  
 USER NAME = carpenter.dj