

| RTE. | SECTION | COUNTY | TOTAL SHEETS | SHEET NO. |
|---------------------|-------------|--------------|--------------|-----------|
| SBI 7C | (13 & 14)RS | BUREAU | 8 | 1 |
| FED. ROAD DIST. NO. | ILLINOIS | CONTRACT NO. | 66761 | |

STATE OF ILLINOIS
DEPARTMENT OF TRANSPORTATION
DIVISION OF HIGHWAYS
PROPOSED
HIGHWAY PLANS

SBI 7C DEPUE SPUR
SECTION (13 & 14)RS

BUREAU COUNTY

C - 93 - 053 - 08
CAPE SEAL RESURFACING FROM
US 6 TO IL 29 NEAR DEPUE

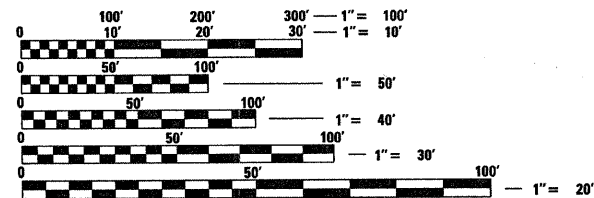
INDEX OF SHEETS

- 1 COVER SHEET
- 2 GENERAL NOTES
- 3 SUMMARY OF QUANTITIES
- 4-5 TYPICAL SECTIONS
- 6 SCHEDULES
- 7 PROJECT LAYOUT
- 8 PAVEMENT MARKING DETAIL

STANDARDS

- 000001-05 STANDARD SYMBOLS, ABBREVIATIONS AND PATTERNS
- 667101 PERMANENT SURVEY MARKERS
- 701301-02 LANE CLOSURE, 2L, 2W, SHORT TIME OPERATIONS
- 701306-01 LANE CLOSURE, 2L, 2W, SLOW MOVING OPERATIONS DAY ONLY, FOR SPEEDS ≥ 45 MPH
- 701311-02 LANE CLOSURE, 2L, 2W, MOVING OPERATIONS - DAY ONLY
- 701901 TRAFFIC CONTROL DEVICES
- 780001-01 TYPICAL PAVEMENT MARKINGS
- 781001-02 TYPICAL APPLICATIONS RAISED REFLECTIVE PAVEMENT MARKERS

MICROFILMED _____
 REEL NUMBER _____
 AWARDED _____
 RESIDENT ENGINEER _____
 AS BUILT CHANGES WERE MADE
 ON THE FOLLOWING SHEETS _____



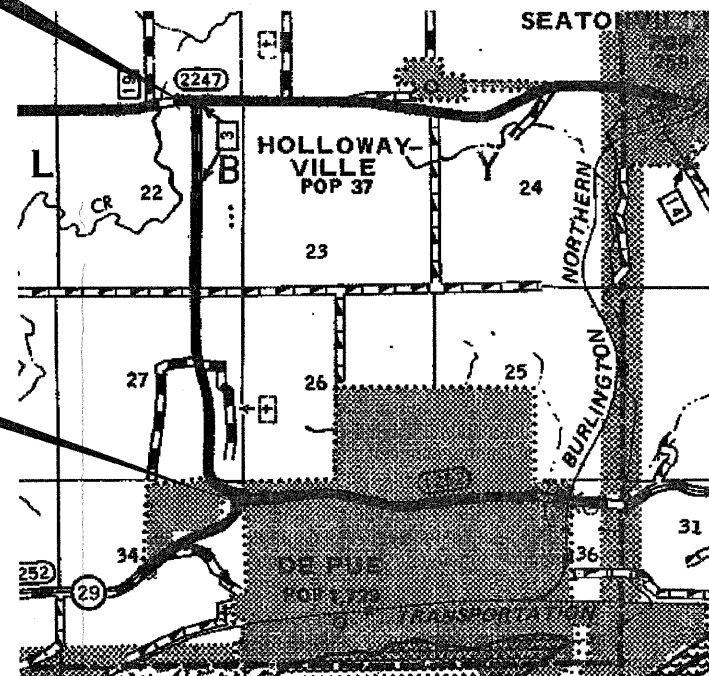
FULL SIZE PLANS HAVE BEEN PREPARED USING STANDARD ENGINEERING SCALES. REDUCED SIZED PLANS WILL NOT CONFORM TO STANDARD SCALES. IN MAKING MEASUREMENTS ON REDUCED PLANS, THE ABOVE SCALES MAY BE USED.

J.U.L.I.E.
 JOINT UTILITY LOCATION INFORMATION FOR EXCAVATION
 1-800-892-0123
 OR 811

PROJECT ENGINEER: JOE KANNEL
UNIT CHIEF: NATHAN SELL /MICHELE LINDEMANN
 DISTRICT 3 NO. (815) 434-6131
CONTRACT NO. 66761

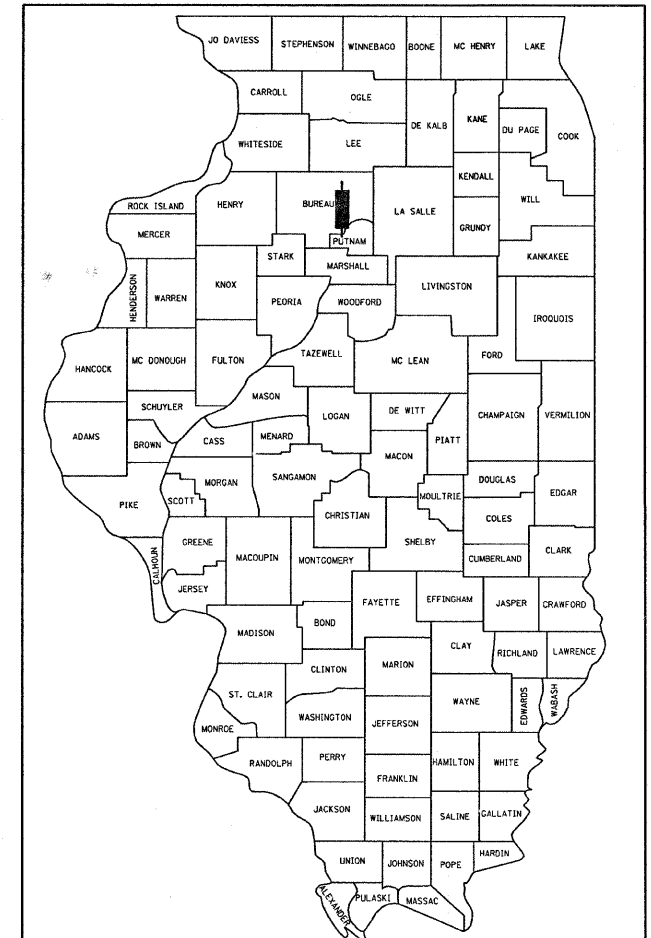
BEGIN IMPROVEMENT
STA 0+12

END IMPROVEMENT
STA 120+74



GROSS LENGTH = 12,062 FT. = 2.284 MI.
NET LENGTH = 12,062 FT. = 2.284 MI.

D-93-030-08



LOCATION OF SECTION INDICATED THUS: — ■ —

FUNCTIONAL CLASSIFICATION
RURAL MAJOR COLLECTOR
2007 ADT = 1194

STATE OF ILLINOIS
 DEPARTMENT OF TRANSPORTATION
 DIVISION OF HIGHWAYS

SUBMITTED 12/13 20 07

George F. Ryan
 DEPUTY DIRECTOR OF HIGHWAYS, REGION ENGINEER
 February 1, 20 08

Eric E. Haran
 ENGINEER OF DESIGN AND ENVIRONMENT
 February 1, 20 08

Christine M. Reed
 DIRECTOR OF HIGHWAYS, CHIEF ENGINEER

PRINTED BY THE AUTHORITY
OF THE STATE OF ILLINOIS

PLOT DATE = Dec 11, 2007 - 01:27:08 PM
 FILE NAME = c:\projects\ed03008\01\isheets.dgn
 PLOT SCALE = 47.82617 / IN.
 USER NAME = carpenter.dj

GENERAL NOTES

CAPE SEALING THROUGH INTERSECTIONS AND AT THE ENDS OF THE PROJECT SHALL HAVE THE EDGES TAPERED/FEATHERED OUT TWO TO THREE FEET BEYOND THE EDGE OF THE MAT. THE COST FOR TAPERS SHALL BE INCLUDED IN THE CONTRACT UNIT PRICE FOR CAPE SEAL, WITH PAY LIMITS WHERE CAPE SEALING ENDS.

THE AGGREGATE FOR THE A-1 SURFACE TREATMENT (THE FIRST PASS OF CAPE SEALING) SHALL BE CA 16 COURSE AGGREGATE CONFORMING TO ARTICLE 1004.01(G).

THE CONTRACTOR SHALL DEVISE AND SUBMIT A JOINT PLAN THAT MEETS THE APPROVAL OF THE ENGINEER.

THE ENGINEER WILL BE THE SOLE JUDGE CONCERNING CURING TIME FOR THE VARIOUS BITUMINOUS LIFTS.

ON EXISTING PAVEMENT WHICH MAY BE SUPERELEVATED, THE NEW BITUMINOUS PAVEMENT SHALL BE BUILT WITH THE SAME SUPERELEVATION UNLESS NEW SUPERELEVATION RATES ARE GIVEN ON THE PLANS.

ANY REFERENCE TO A STANDARD IN THESE PLANS SHALL BE INTERPRETED TO MEAN THE EDITION AS INDICATED BY THE SUBNUMBER SHOWN IN THE LIST OF STANDARDS INCLUDED IN THESE PLANS.

THE FOLLOWING RATES OF APPLICATION HAVE BEEN USED IN CALCULATING PLAN QUANTITIES:

| | | |
|--------------------------------------|----|---------------------------|
| MICROSURFACING, SINGLE PASS, TYPE II | 24 | LBS / SQ YD |
| SHORT TERM PAVEMENT MARKING | 10 | FT /100 FT OF APPLICATION |

STATE OF ILLINOIS
DEPARTMENT OF TRANSPORTATION
DISTRICT THREE

PREPARED BY: *[Signature]*
DISTRICT STUDIES & PLANS ENGINEER

DATE: 12.13.07

EXAMINED BY: *[Signature]*
DISTRICT CONSTRUCTION ENGINEER

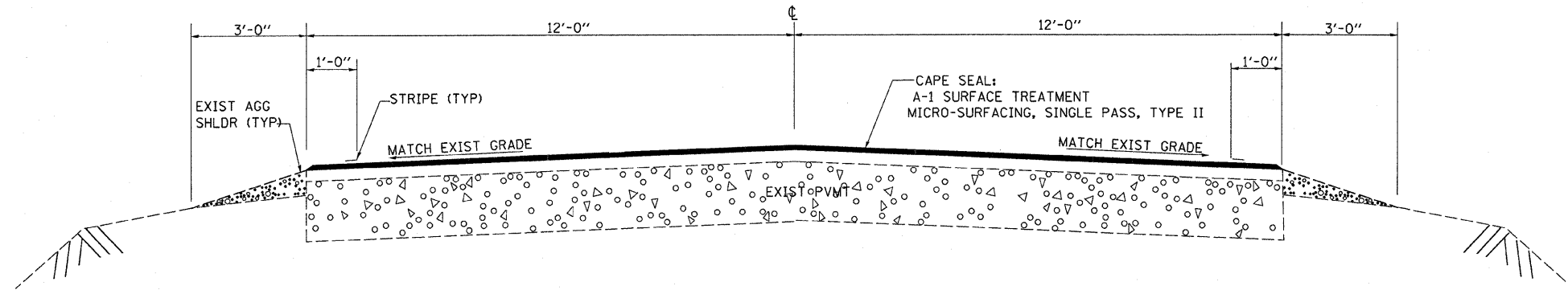
[Signature]
DISTRICT MATERIALS ENGINEER

[Signature]
DISTRICT OPERATIONS ENGINEER

| | | | | | | | | | | | |
|--|--|----------------|---------------|---|----------------------|---|-----------------------------|--------------------------|-----------------|--------------|--|
| FILE NAME = c:\projects\ed03008\allsheets.dgn | USER NAME = carpenterdj | DESIGNED - ___ | REVISED - ___ | STATE OF ILLINOIS DEPARTMENT OF TRANSPORTATION | GENERAL NOTES | SBI RTE. | SECTION | COUNTY | TOTAL SHEETS | SHEET NO. | |
| | PLOT SCALE = 47.8261' / IN. | DRAWN - ___ | REVISED - ___ | | | 7C | (13 & 14)RS | BUREAU | 8 | 2 | |
| | PLOT DATE = Dec 11, 2007 - 01:26:52 PM | CHECKED - ___ | REVISED - ___ | | | CONTRACT NO. 66761 | | | | | |
| | | DATE - _____ | REVISED - ___ | | | FED. ROAD DIST. NO. [ILLINOIS] FED. AID PROJECT | | | | | |
| | | | | | | SCALE: _____ | SHEET NO. ___ OF ___ SHEETS | STA. _____ TO STA. _____ | | | |

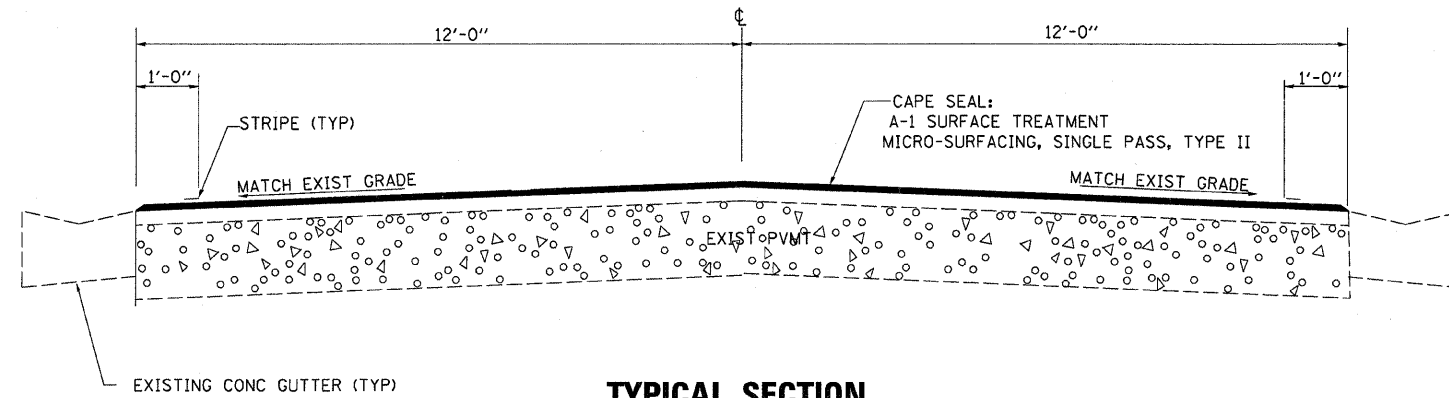
| SUMMARY OF QUANTITIES | | | | 100% STATE |
|-----------------------|---|-------|----------------|------------------|
| CODE NO. | CONSTRUCTION CODE TYPE: ITEM | UNIT | TOTAL QUANTITY | I000 |
| | | | | ROADWAY QUANTITY |
| 45100200 | CRACK FILLING | POUND | 630 | 630 |
| 67100100 | MOBILIZATION | L SUM | 1 | 1 |
| 70100460 | TRAFFIC CONTROL AND PROTECTION, STANDARD 701306 | L SUM | 1 | 1 |
| 70300100 | SHORT-TERM PAVEMENT MARKING | FOOT | 1246 | 1246 |
| 70301000 | WORK ZONE PAVEMENT MARKING REMOVAL | SQ FT | 415 | 415 |
| * 78001110 | PAINT PAVEMENT MARKING - LINE 4" | FOOT | 40847 | 40847 |
| * 78001130 | PAINT PAVEMENT MARKING - LINE 6" | FOOT | 1240 | 1240 |
| * 78100100 | RAISED REFLECTIVE PAVEMENT MARKER | EACH | 156 | 156 |
| 78100215 | TEMPORARY FLEXIBLE PAVEMENT MARKER | EACH | 622 | 622 |
| X0324951 | CAPE SEAL | SQ YD | 37599 | 37599 |

* SPECIALTY ITEM



TYPICAL SECTION

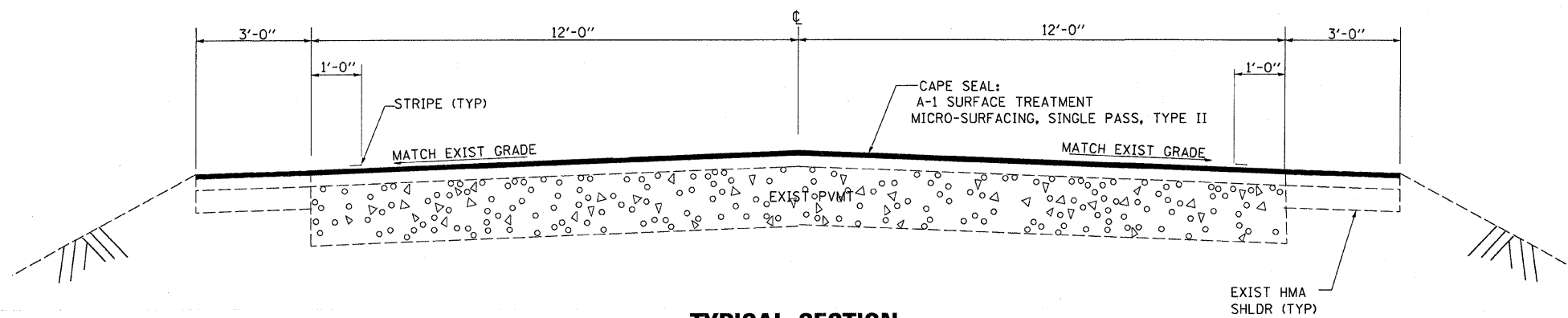
0+12 TO 73+10
 105+25 TO 120+74
 DEPUE SPUR S TO IL 29 S CONNECTOR



TYPICAL SECTION

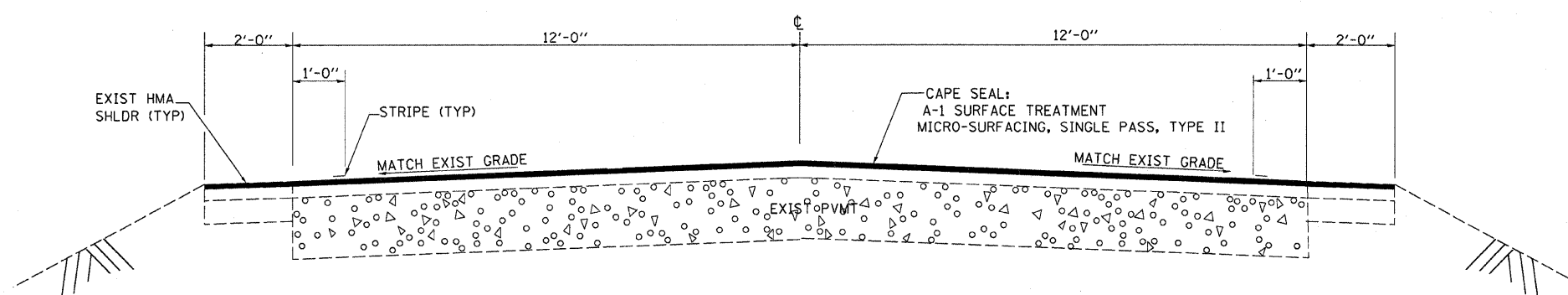
73+10 TO 79+20

| | | | | | | | | | | | |
|--|--|------------|-----------|---|-----------------------------|--------------------------|---|-------------|--------|-----------------|--------------|
| FILE NAME = c:\projects\ed03008\allsheets.dgn | USER NAME = carpenterdj | DESIGNED - | REVISED - | STATE OF ILLINOIS DEPARTMENT OF TRANSPORTATION | TYPICAL SECTIONS | | SBI RTE. | SECTION | COUNTY | TOTAL SHEETS | SHEET NO. |
| | PLOT SCALE = 47.8261' / IN. | DRAWN - | REVISED - | | | | TC | (13 & 14)RS | BUREAU | 8 | 4 |
| | PLOT DATE = Dec 11, 2007 - 01:26:19 PM | CHECKED - | REVISED - | | | | CONTRACT NO. 66761 | | | | |
| | DATE - | REVISED - | | SCALE: _____ | SHEET NO. ___ OF ___ SHEETS | STA. _____ TO STA. _____ | FED. ROAD DIST. NO. - ILLINOIS FED. AID PROJECT | | | | |



TYPICAL SECTION

79+20 TO 104+60



TYPICAL SECTION

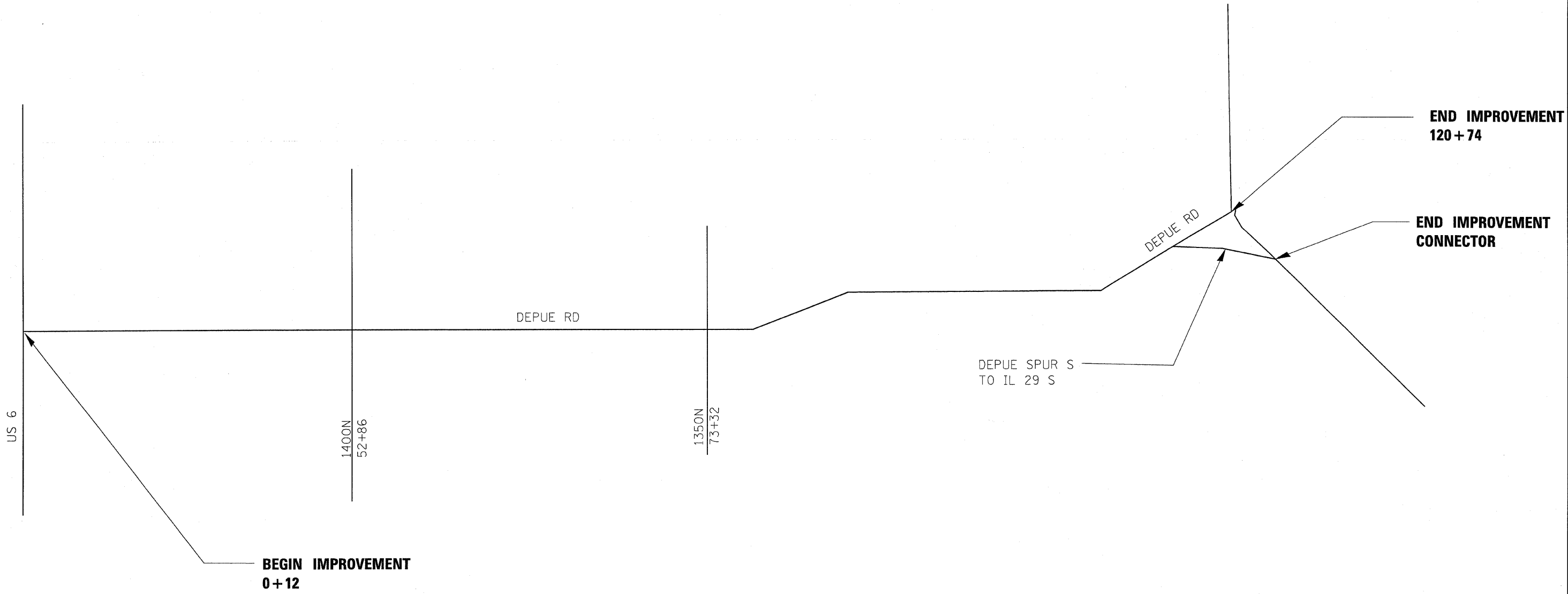
104+60 TO 105+25

| | | | | | | | | | | | | |
|---|--|------------|-----------|---|---|--------------------|--|---|-------------|--------|-----------------|--------------|
| FILE NAME = o:\projects\ed03008\allshets.dgn | USER NAME = carpanterdj | DESIGNED - | REVISED - | STATE OF ILLINOIS DEPARTMENT OF TRANSPORTATION | TYPICAL SECTIONS | | | SBI RTE. | SECTION | COUNTY | TOTAL SHEETS | SHEET NO. |
| | PLOT SCALE = 47.8261' / IN. | DRAWN - | REVISED - | | | | | 7C | (13 & 14)RS | BUREAU | 8 | 5 |
| | PLOT DATE = Dec 11, 2007 - 01:26:05 PM | CHECKED - | REVISED - | | SCALE: _____ SHEET NO. ___ OF ___ SHEETS STA. _____ TO STA. _____ | | | FED. ROAD DIST. NO. - ILLINOIS FED. AID PROJECT | | | | |
| | DATE - | REVISED - | | | | CONTRACT NO. 66761 | | | | | | |

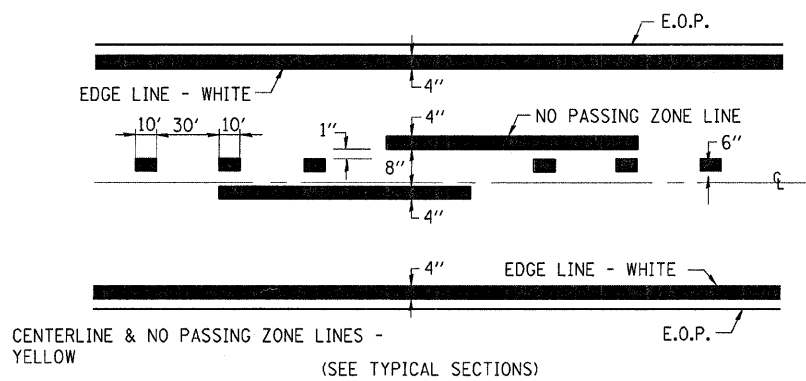
| RESURFACING SCHEDULE | | | | |
|----------------------|-------------|--------|----------------|---------------|
| LOCATION | DESCRIPTION | LENGTH | CAPE SEAL | CRACK FILLING |
| | | | SQ YD | POUND |
| 0+12 TO 73+10 | | 7298 | 20019.3 | 350 |
| 73+10 TO 79+20 | | 610 | 1626.7 | 29 |
| 79+20 TO 104+60 | | 2565 | 8550 | 154 |
| 104+60 TO 105+25 | | 65 | 202.2 | 4 |
| 105+25 TO 120+74 | | 1549 | 5008.7 | 74 |
| DEPUE RD S TO 29 S | CONNECTOR | 386 | 2192 | 19 |
| | | | | |
| TOTAL | | | 37598.9 | 630 |

| PAVEMENT MARKING SCHEDULE | | | | | | | | | |
|---------------------------|-------------|--------|-----------------|--------------|-----------------|------------------------|-------------------------|-----------------------------|------------------------|
| LOCATION | DESCRIPTION | LENGTH | PAINT PVMT MARK | | PAINT PVMT MARK | TEMP FLEX PVMT MARKERS | SHORT TERM PVMT MARKING | WORK ZONE PVMT MARK REMOVAL | RAISED REF PVMT MARKER |
| | | | WHITE 4" | YELLOW 4" | YELLOW 6" | EACH | FOOT | SQ FT | EACH |
| | | | FOOT | FOOT | FOOT | | | | |
| 0+12 TO 26+79 | | 2667 | 5334 | 4319 | 230 | 133 | 267 | 89 | 33 |
| 26+79 TO 59+56 | | 3277 | 6554 | 0 | 820 | 164 | 328 | 109 | 41 |
| 59+56 TO 72+69 | | 1313 | 2626 | 1862 | 190 | 66 | 131 | 44 | 16 |
| 72+68 TO 73+58 | | 90 | 0 | 0 | 0 | 5 | 9 | 3 | 1 |
| 73+58 TO 114+05 | | 4047 | 8094 | 8094 | 0 | 202 | 405 | 135 | 51 |
| 114+05 TO 114+65 | | 60 | 60 | 0 | 0 | 3 | 6 | 2 | 1 |
| 114+65 TO 120+74 | | 609 | 1218 | 1080 | 0 | 30 | 61 | 20 | 8 |
| S DEPUE RD TO S 29 | CONNECTOR | 386 | 834 | 772 | 0 | 19 | 39 | 13 | 5 |
| | | | | | | | | | |
| SUBTOTAL | | | 24720 | 16127 | | | | | |
| TOTAL | | | 40847 | 1240 | 622 | 1246 | 415 | 156 | |

NOTE: NO PASSING ZONES SHALL BE REPLACED



| | | | | | | | | | | | | |
|--|--|----------------|---------------|---|-----------------------|--------------|-----------------------------|--------------------------|---|--------|-----------------|--------------|
| FILE NAME = c:\projects\ed03008\allsheets.dgn | USER NAME = carpenterdj | DESIGNED - --- | REVISED - --- | STATE OF ILLINOIS DEPARTMENT OF TRANSPORTATION | PROJECT LAYOUT | | | SBI RTE. | SECTION | COUNTY | TOTAL SHEETS | SHEET NO. |
| | PLOT SCALE = 47.8261' / IN. | DRAWN - --- | REVISED - --- | | | | | 7C | (13 & 14)RS | BUREAU | 8 | 7 |
| | PLOT DATE = Dec 11, 2007 - 01:25:50 PM | CHECKED - --- | REVISED - --- | | REVISED - --- | SCALE: _____ | SHEET NO. ___ OF ___ SHEETS | STA. _____ TO STA. _____ | FED. ROAD DIST. NO. _ ILLINOIS FED. AID PROJECT | | | |
| | | | | | | | CONTRACT NO. 66761 | | | | | |



PAVEMENT MARKING

| | | | | | | | | | | |
|--|-----------------------------|----------------|---------------|---|--------------------------------|-------------------|-----------------------------|--------------------------|---|-------------------|
| FILE NAME = c:\projects\ed03008\allsheets.dgn | USER NAME = carpenterdj | DESIGNED - --- | REVISED - --- | STATE OF ILLINOIS DEPARTMENT OF TRANSPORTATION | PAVEMENT MARKING DETAIL | SBI RTE. 7C | SECTION (13 & 14)RS | COUNTY BUREAU | TOTAL SHEETS 8 | SHEET NO. 8 |
| | PLOT SCALE = 47.8261' / IN. | CHECKED - --- | REVISED - --- | | | SCALE: _____ | SHEET NO. ___ OF ___ SHEETS | STA. _____ TO STA. _____ | FED. ROAD DIST. NO. _____ ILLINOIS FED. AID PROJECT | |
| PLOT DATE = Dec 11, 2007 - 01:25:33 PM | DATE - _____ | REVISED - --- | REVISED - --- | CONTRACT NO. 66761 | | | | | | |