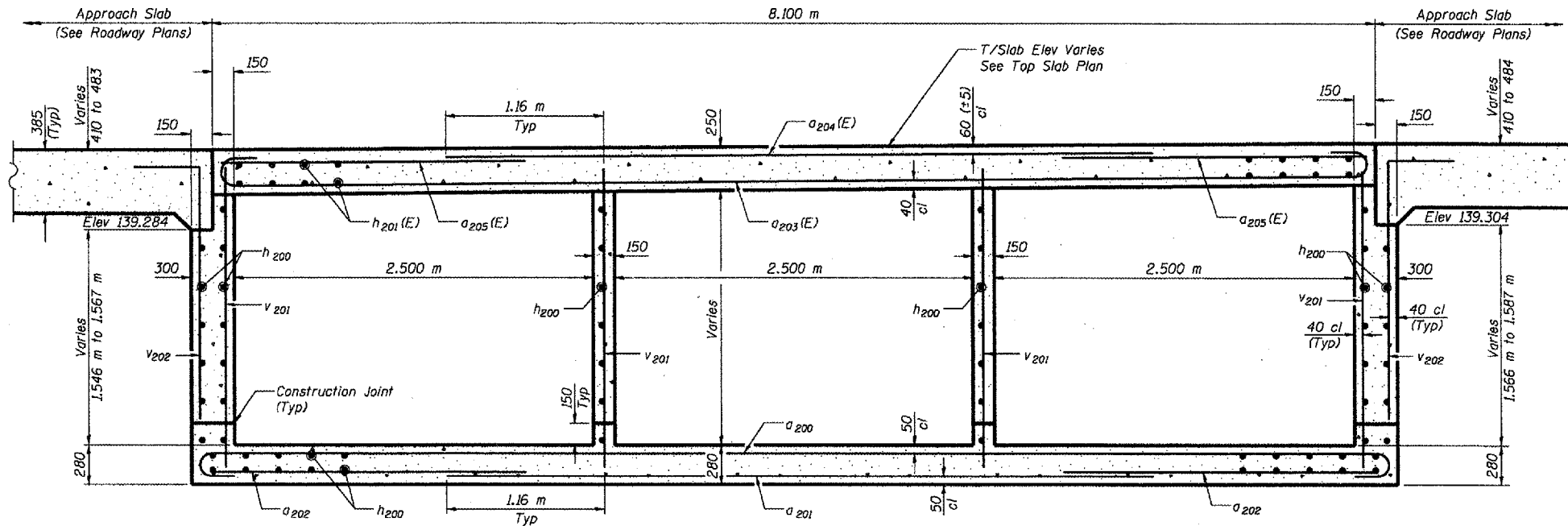


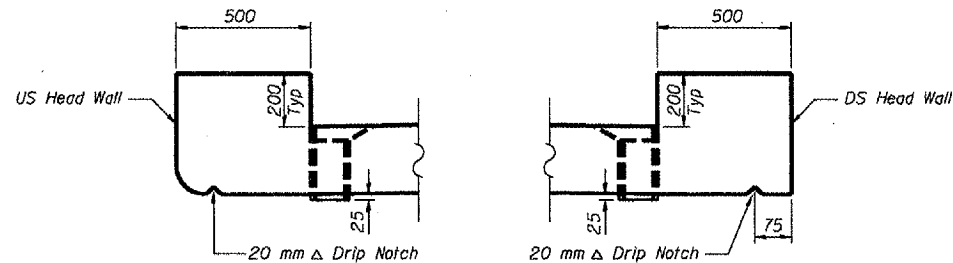
STATE OF ILLINOIS
DEPARTMENT OF TRANSPORTATION

ROUTE NO.	SECTION	COUNTY	SHEET	SHEET	SHEET NO. 2
F.A.P. 317	448(B)R	PEORIA	31	19	9 SHEETS
FED. ROAD DIST. NO. 7	ILLINOIS	FED. AID PROJECT	Contract No. 68217		



CROSS SECTION

(Looking South - Dimensions at Right L's)



AT UPSTREAM END

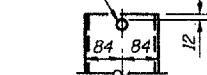
AT DOWNSTREAM END

DRAIN DETAIL

NOTE:

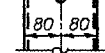
Floor drains need not be painted. Fiberglass pipe shall conform to ASTM D 2996, with short-time rupture strength hoop tensile stress of 200 MPa minimum.

12 mm φ x 200 mm Fiberglass Reinforce Plastic Rebar

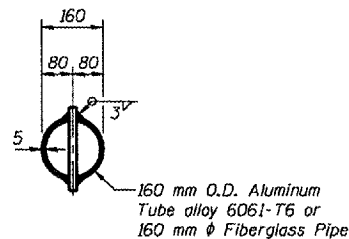


FIBERGLASS PIPE

Fill slot with weld 12 mm φ x 200 mm Aluminum Bar ASTM B 211M alloy 6061-T6

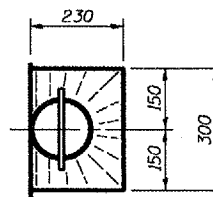


ALUMINUM TUBE



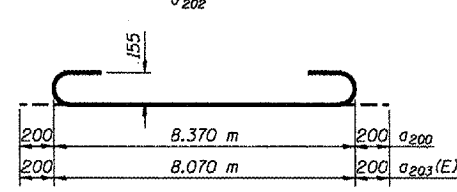
TOP PLAN

(Showing Aluminum Tube)

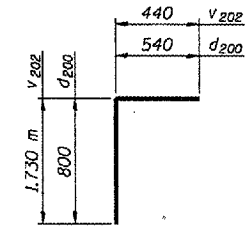


TOP PLAN

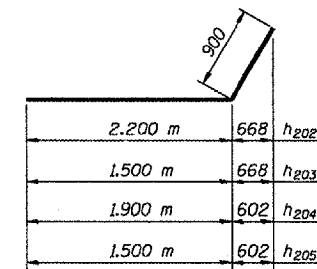
FLOOR DRAIN DETAILS



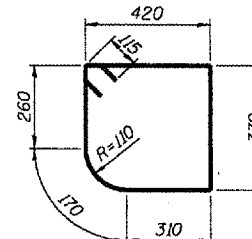
BARS a200 & a203(E)



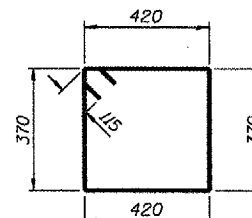
BARS d200 & v202



BARS h202, h203, h204 & h205



BAR s200(E)



BAR s201(E)

BILL OF MATERIAL

Bar	No.	Size	Length (m)	Shape
a200	74	#19	8.77	—
a201	72	#19	5.00	—
a202	72	#16	2.35	—
a203 (E)	65	#19	8.47	—
a204 (E)	65	#19	5.00	—
a205 (E)	66	#16	2.35	—
d200	54	#13	1.34	—
h200	96	#16	10.58	—
h201 (E)	54	#16	10.58	—
h202	16	#16	3.10	—
h203	20	#16	2.40	—
h204	16	#16	2.80	—
h205	20	#16	2.40	—
h206 (E)	12	#19	8.36	—
s200 (E)	53	#13	1.76	—
s201 (E)	53	#13	1.81	—
v201	144	#13	2.17	—
v202	72	#13	2.17	—
v203	16	#13	2.98	—
Concrete Box Culverts		m ³	74.0	
Reinforcement Bars		kg	4,970	
Reinforcement Bars, Epoxy Coated		kg	3,500	
Floor Drains		Each	4	

Reinforcement bars designated (E) shall be epoxy coated.

NOTE:

Work this sheet with sheets 4, 5 and 6.

MIN BAR LAP

- #13 bars = 440
- #16 bars = 550
- #19 bars = 670

DESIGNED	BC
CHECKED	DSE
DRAWN	RD
CHECKED	DSE
DATE	AUGUST 31, 2004

Welds File Registration No. 04-00533

Stanley Consultants Inc.
850 West Higgins Road, Suite 130, Chicago, Illinois 6063-2800
www.stanleygroup.com

CULVERT DETAILS
WHEELER ROAD OVER
DRY RUN CREEK
FAP RTE 317 SECTION (448)BR
PEORIA COUNTY
STA 30+168.363
STRUCTURE NUMBER 072-2034

*****FILENAME*****