

F.A.P. RTE.	SECTION	COUNTY	TOTAL SHEETS	SHEET NO.
685	(118B)I	McDONOUGH	11	1

71
12

D-94-002-08



LOCATION OF SECTION INDICATED THUS: - [black box] -

PROJECT CONSISTS OF BEAM BRACING OF (4) PPC BEAMS ON STRUCTURE (SN.055-0012) CARRYING IL.9 OVER LITTLE CREEK, WEST CITY LIMITS OF BLANDINSVILLE.

STATE OF ILLINOIS
DEPARTMENT OF TRANSPORTATION
DIVISION OF HIGHWAYS

SUBMITTED *Dec 19 20 07*

[Signature]
DEPUTY DIRECTOR OF HIGHWAYS, REGION ENGINEER

February 1, 20 08
Eric E. Harms
ENGINEER OF DESIGN AND ENVIRONMENT

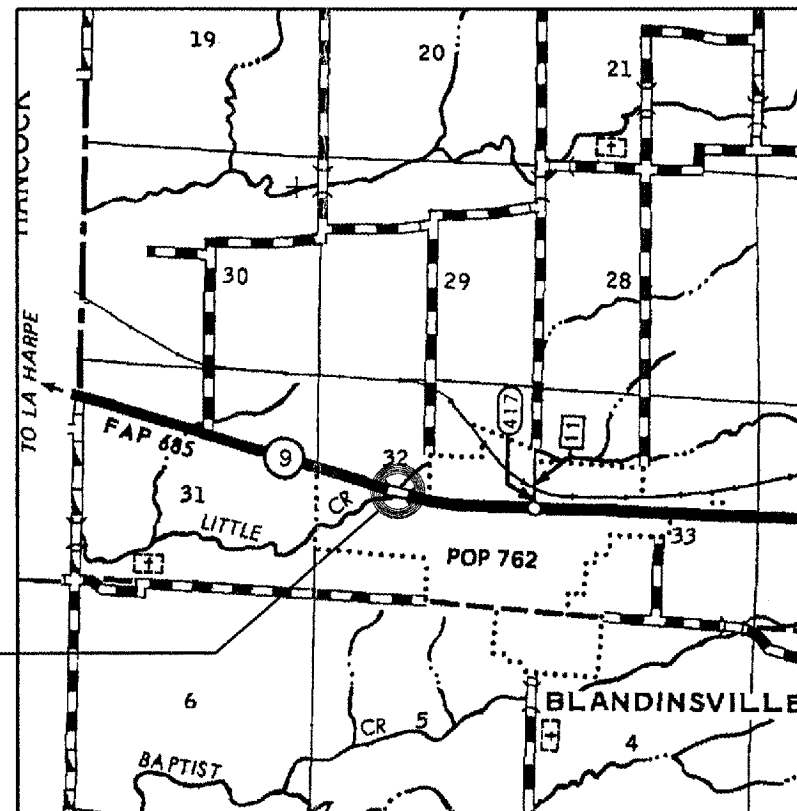
February 1, 20 08
Christine M. Reed
DIRECTOR OF HIGHWAYS, CHIEF ENGINEER

PRINTED BY THE AUTHORITY
OF THE STATE OF ILLINOIS

STATE OF ILLINOIS
DEPARTMENT OF TRANSPORTATION
DIVISION OF HIGHWAYS

**PROPOSED
HIGHWAY PLANS**

FAP 685 (IL 9)
SECTION (118B)I
McDONOUGH COUNTY
C-94-001-08



LOCATION MAP

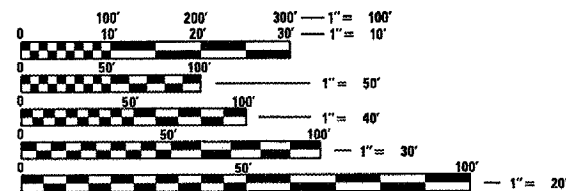
SN.055-0012
Section (118B)I

INDEX OF SHEETS:

- 1. COVER SHEET
- 2. GENERAL NOTES
- 3. SUMMARY OF QUANTITIES
- 4. TYPICAL SECTIONS
- 5. SCHEDULE OF QUANTITIES
- 6-7. PLAT-SHEETS
- 8. GENERAL LAYOUT
- 9. TRAFFIC CONTROL
- 10-11A GENERAL PLAN & ELEVATION, REPAIR DETAILS

STANDARDS:

- 701001-01 701901
- 701006-02
- 701201-02



FULL SIZE PLANS HAVE BEEN PREPARED USING STANDARD ENGINEERING SCALES. REDUCED SIZED PLANS WILL NOT CONFORM TO STANDARD SCALES. IN MAKING MEASUREMENTS ON REDUCED PLANS, THE ABOVE SCALES MAY BE USED.

J.U.L.I.E.
JOINT UTILITY LOCATION INFORMATION FOR EXCAVATION
1-800-892-0123

CONTRACT NO. 68765 CAT. NO. 033614-00D

DESIGNER: CLARK JONES
PHONE: (309)671-3452

PROJECT ENGINEER: JIM MILLER
PHONE: (309)671-3451

F.A.P. SECTION	COUNTY	TOTAL SHEETS	SHEET NO.
685 (118BII)	McDONOUGH	11	3
STA. 79+67.92 TO STA. 80+06.08		FED. ROAD DIST. NO. 4 ILLINOIS FED. AID PROJECT	

SUMMARY OF QUANTITIES

100% STATE SAFETY - 2A
McDonough

CODE NO.	ITEM	UNIT	RURAL	TOTAL
* 25100630	EROSION CONTROL BLANKET	SQYD	355	355
50200100	STRUCTURE EXCAVATION	CUYD	7	7
50500405	FURNISHING AND ERECTING STRUCTURAL STEEL	POUND	16,700	16,700
67100100	MOBILIZATION	LSUM	1	1
70100450	TRAFFIC CONTROL AND PROTECTION, STANDARD 701201	LSUM	1	1

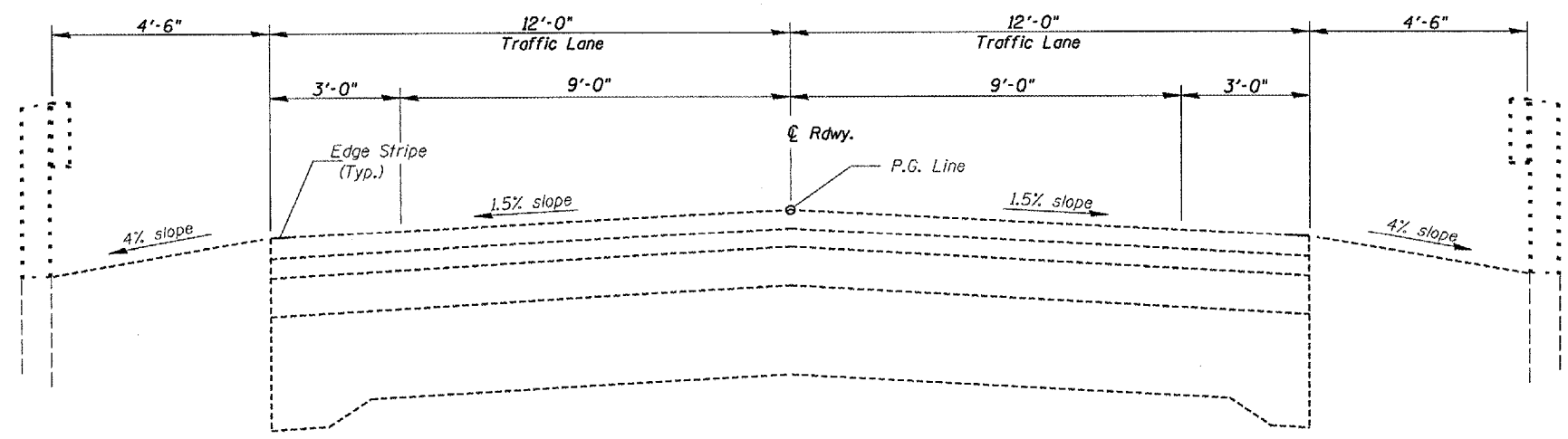
* Seeding of minor areas shall be included in the cost of Erosion Control Blanket.

D:\PROJECTS\68765\68765\SUMMARY\68765\SUMMARY.dwg 08/08/07 10:52:00 AM

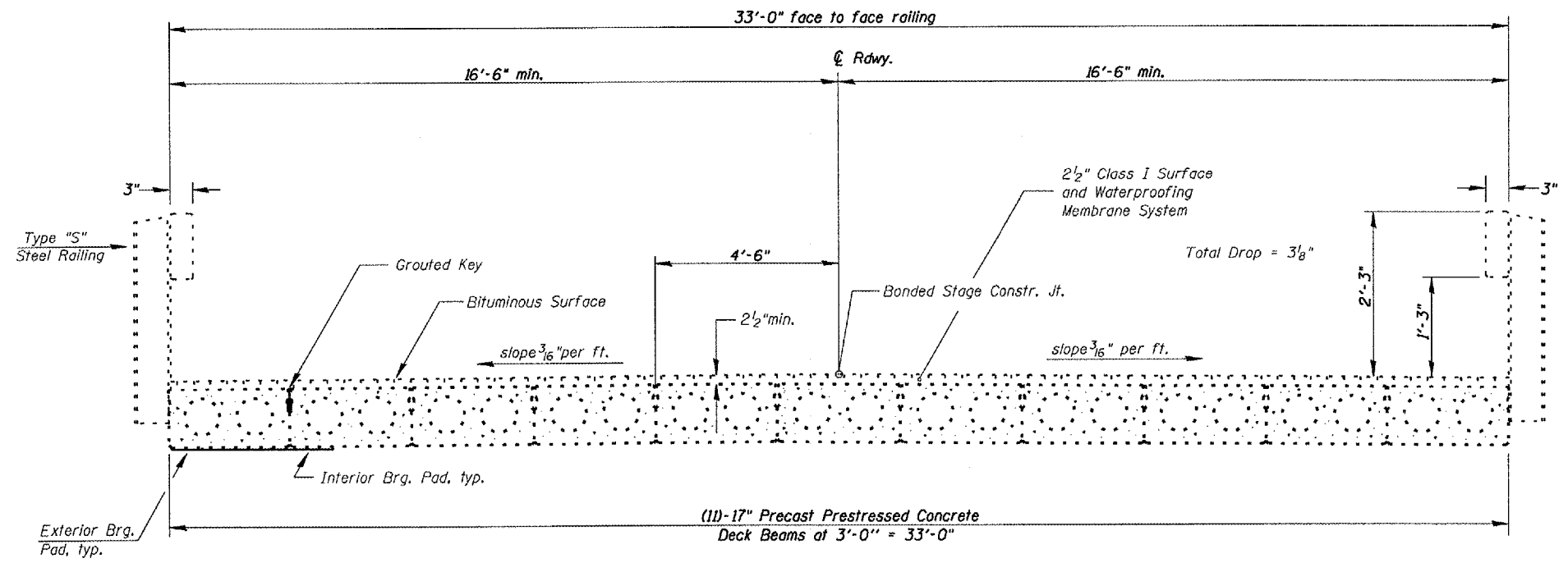
REVISIONS	
NAME	DATE
CEJ	08/08/07

ILLINOIS DEPARTMENT OF TRANSPORTATION
SUMMARY OF QUANTITIES
SCALE: VERT. DRAWN BY CEJ
 HORIZ. CHECKED BY
DATE 07-02-2007

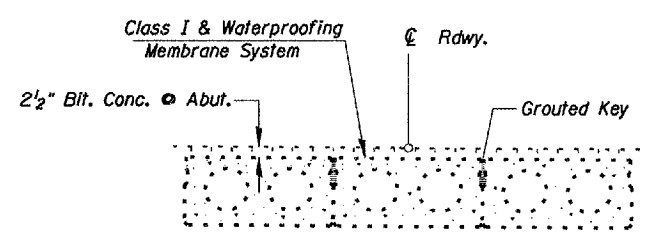
F.A.P. RTE.	SECTION	COUNTY	TOTAL SHEETS	SHEET NO.
685	(11881)	MCDONOUGH	11	4
STA. 79+67.92		TO STA. 80+06.08		
FED. ROAD DIST. NO. 4		ILLINOIS FED. AID PROJECT		



APPROACH ROADWAY SECTION



BRIDGE CROSS SECTION
(Looking West)



CLASS I DETAIL & WATERPROOFING TREATMENT

PLOT DATE = 04/15/03
 PLOT SCALE = 1/8" = 1'-0"
 REFERENCE = BREF

SN.055-0012 IL.9
over LITTLE CRK.

REVISIONS	
NAME	DATE

ILLINOIS DEPARTMENT OF TRANSPORTATION

TYPICAL SECTIONS

SCALE: VERT. DRAWN BY CEJ
 HORIZ. CHECKED BY
 DATE 07-03-2007

F.A.P. RTE.	SECTION	COUNTY	TOTAL SHEETS	SHEET NO.
685	(118B)I	MCDONOUGH	11	5
STA. 79+67.92		TO STA. 80+06.08		
FED. ROAD DIST. NO. 4		ILLINOIS FED. AID PROJECT		

SCHEDULE OF QUANTITIES

MOBILIZATION SCHEDULE

LOCATION	UNIT	QUANTITY
<i>Jobsite</i>	<i>LSUM</i>	<i>1.0</i>

T.C.& P STANDARD 701201

LOCATION	UNIT	QUANTITY
<i>Project Limits</i>	<i>LSUM</i>	<i>1.0</i>

FURNISH & ERECT STRUCTURAL STEEL

LOCATION	UNIT	QUANTITY
<i>Under Existing Superstructure</i>	<i>POUND</i>	<i>14,800</i>

EROSION CONTROL BLANKET

LOCATION	UNIT	QUANTITY
<i>Jobsite Embankment & R.O.W.</i>	<i>SQYD</i>	<i>355</i>

PLOT DATE: 04/24/06-20-07
 FILE NAME: #7FILE185A\GEN\DRAF\ASTDPL\MS\SQUAD1\ABRIDG\Repr\Contract\Emergenc\PRCS\Repr\AS68752_S0685-8883_1087\over\Popa\Crk.dgn
 PLOT SCALE: #SCALE#
 REFERENCE: #REF#

REVISIONS	
NAME	DATE

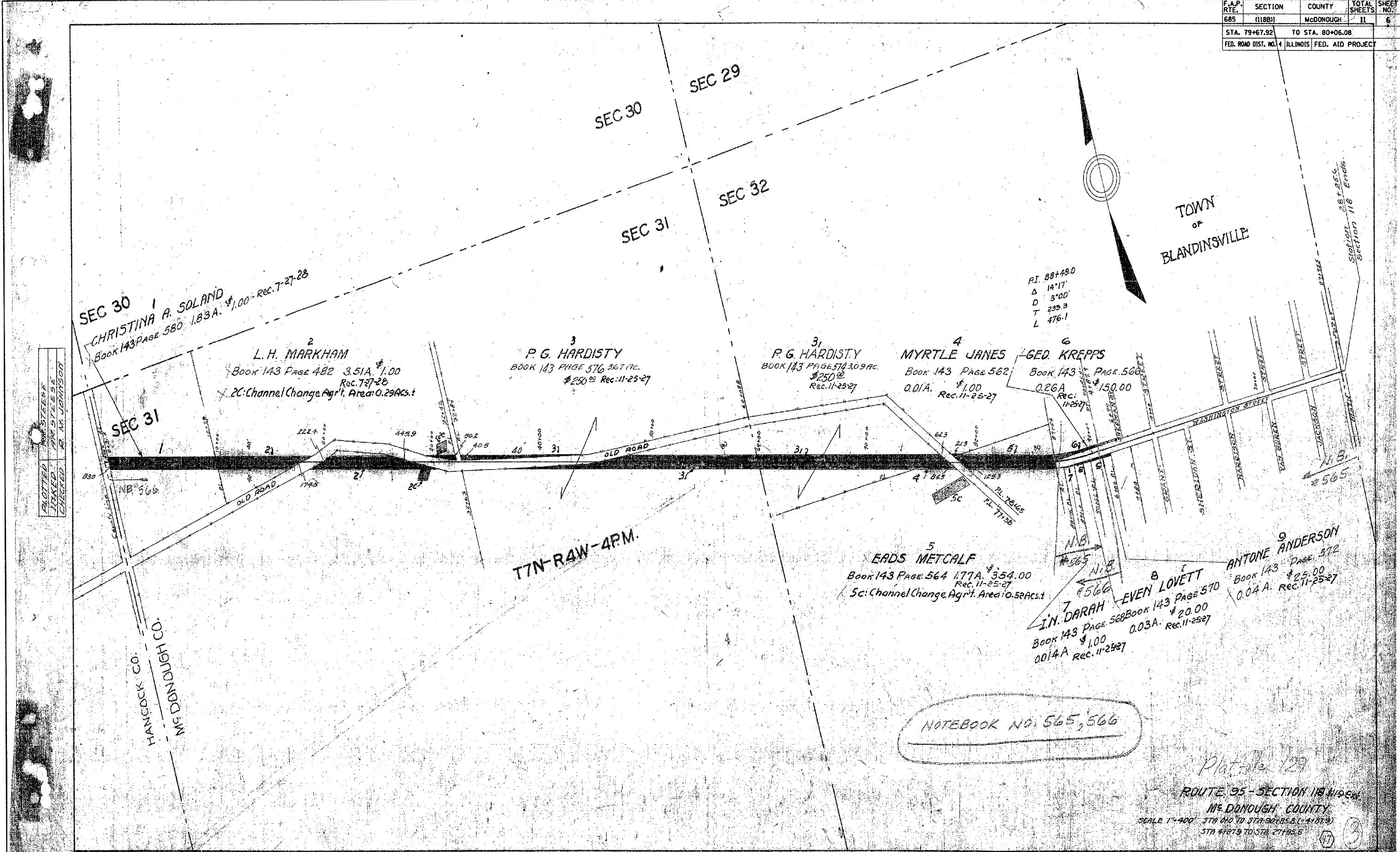
ILLINOIS DEPARTMENT OF TRANSPORTATION

SCHEDULE OF QUANTITIES

SCALE: VERT.
HORIZ.
DATE 09-02-2007

DRAWN BY CEJ
CHECKED BY

F.A.P. RTE.	SECTION	COUNTY	TOTAL SHEETS	SHEET NO.
685	(118B)	MCDONOUGH	11	6
STA. 79+67.92		TO STA. 80+06.08		
FED. ROAD DIST. NO. 4		ILLINOIS FED. AID PROJECT		



P.I. 88+49.0
 Δ 14°17'
 D 3°00'
 T 235.3
 L 476.1

SEC 30
 1
 CHRISTINA A. SOLAND
 Book 143 Page 580 1.83A. \$1.00 Rec. 7-27-28

2
 L. H. MARKHAM
 Book 143 Page 482 3.51A. \$1.00
 Rec. 7-27-28
 2C: Channel Change Agr't. Area: 0.29 Acs.

3
 P. G. HARDISTY
 BOOK 143 PAGE 576 367 AC.
 \$250.00 Rec. 11-25-27

3
 P. G. HARDISTY
 BOOK 143 PAGE 574 30.9 AC.
 \$250.00 Rec. 11-25-27

4
 MYRTLE JANES
 Book 143 Page 562
 O.D.I.A. \$1.00
 Rec. 11-25-27

6
 GED. KREPPS
 Book 143 Page 566
 0.26A \$150.00
 Rec. 11-25-27

5
 EADS METCALF
 Book 143 Page 564 1.77A. \$354.00
 Rec. 11-25-27
 5c: Channel Change Agr't. Area: 0.52 Acs.

7
 J.N. DARAH
 Book 143 Page 568
 0.014A \$1.00
 Rec. 11-25-27

8
 EVEN LOVETT
 Book 143 Page 570
 0.03A. \$20.00
 Rec. 11-25-27

9
 ANTONE ANDERSON
 Book 143 Page 572
 \$25.00
 0.04 A. Rec. 11-25-27

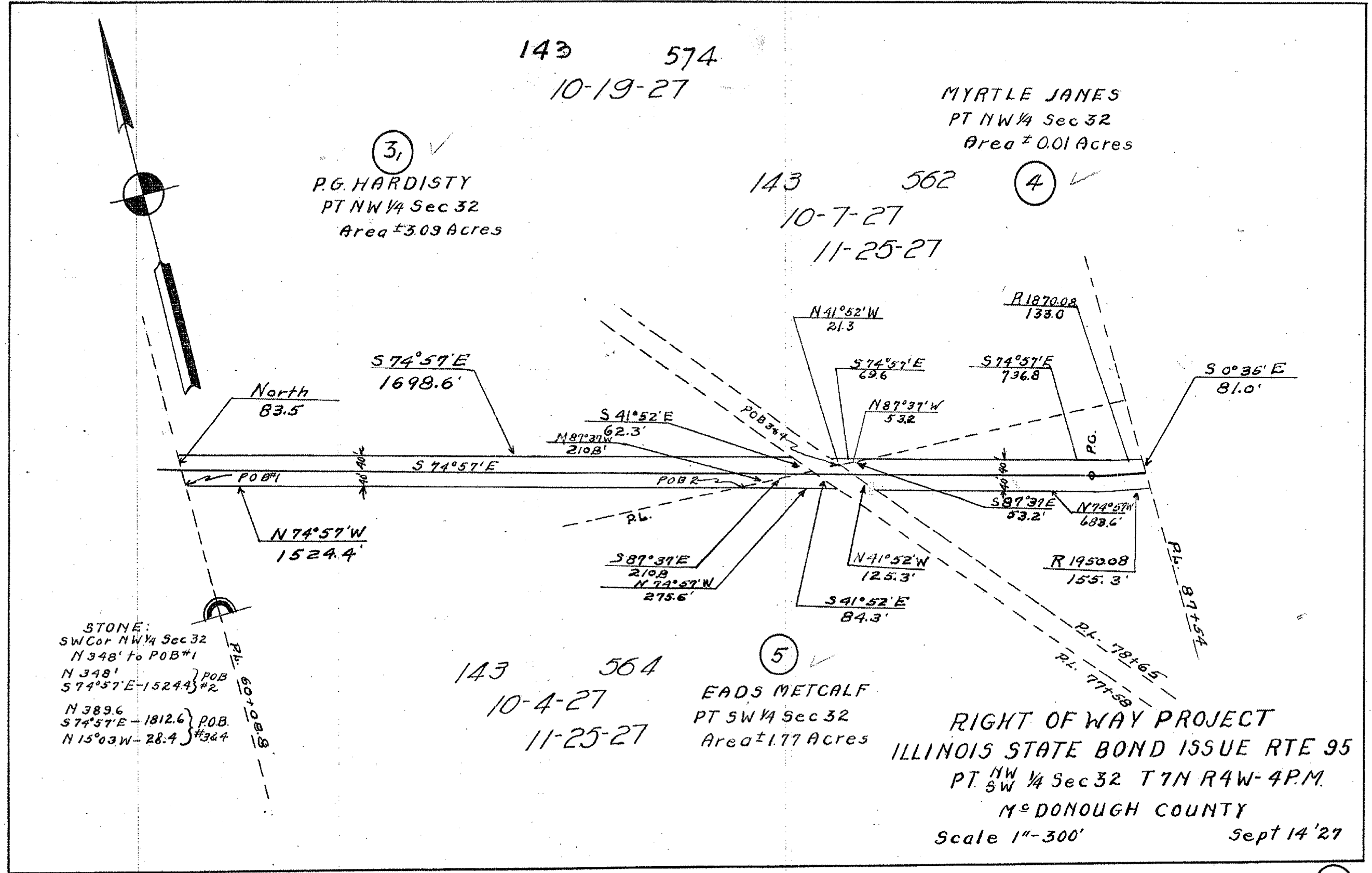
NOTEBOOK NO. 565, 566

Plat. 127
 ROUTE 95 - SECTION 118 N 118 E
 MCDONOUGH COUNTY
 SCALE 1" = 400' STA 79+00 TO STA 80+06.08 (4187.3)
 STA 4187.9 TO STA 4195.6

PLOT DATE : 08/28/05-07
 FILE NAME : \\S:\GIS\PROJECTS\118\118D\118D\CONTRACTS\Emergency\118\118E\118E.dgn
 USER : MRE

PLOTTED BY STEVE
 CHECKED BY M. JOHNSON

F.A.P. RTE.	SECTION	COUNTY	TOTAL SHEETS	SHEET NO.
685	(118B)	MCDONOUGH	11	7
STA. 79+67.92 TO STA. 80+06.08				
FED. ROAD DIST. NO. 4		ILLINOIS	FED. AID PROJECT	



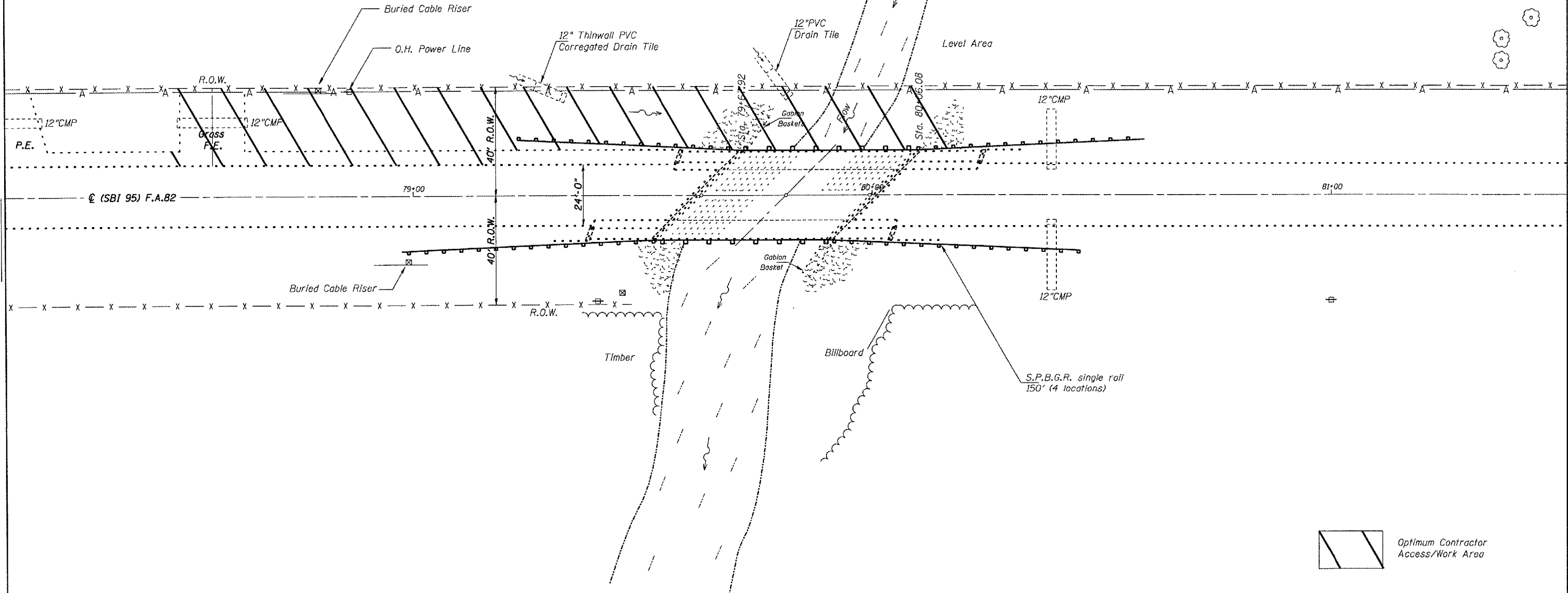
ROUTE 95 Sec 119 Ext.


PLOT DATE: 09-14-27
 USER: J. L. HARRIS
 SCALE: 1"=300'
 REF:

F.A.P. RTE.	SECTION	COUNTY	TOTAL SHEETS	SHEET NO.
685	118B11	McDONOUGH	11	8
STA. 79+67.92		TO STA. 80+06.08		
FED. ROAD DIST. NO. 4 ILLINOIS FED. AID PROJECT				

BENCH MARK: CHISELED SQUARE IN S.W. WINGWALL - ELEVATION = 100.00

T7N- R4W- 4th P.M.
SECTION 32



 Optimum Contractor Access/Work Area

SN.055-0012 IL.9
over LITTLE CRK.

NOTES

When it is necessary for the Contractor to place and store materials and equipment on State owned R.O.W. the appearance and condition of the affected sod area shall be left as it was found and according to the discretion of the Engineer. All necessary work and Seeding Minor Areas shall be included in cost of Erosion Control Blanket. See section 107 of the Standard Specifications for requirements concerning Contractor access and protection & preservation of the natural area and waterway at and around the project.

REVISIONS	
NAME	DATE

ILLINOIS DEPARTMENT OF TRANSPORTATION

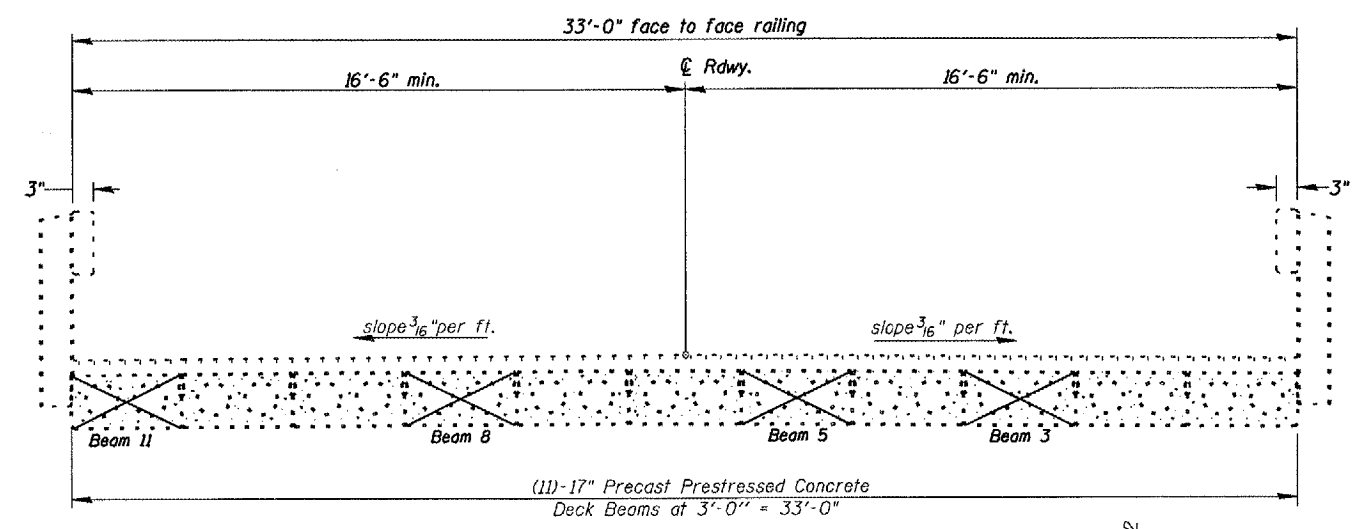
GENERAL LAYOUT

SCALE: VERT.
HORIZ.
DATE 08-09-2007

DRAWN BY CEJ
CHECKED BY

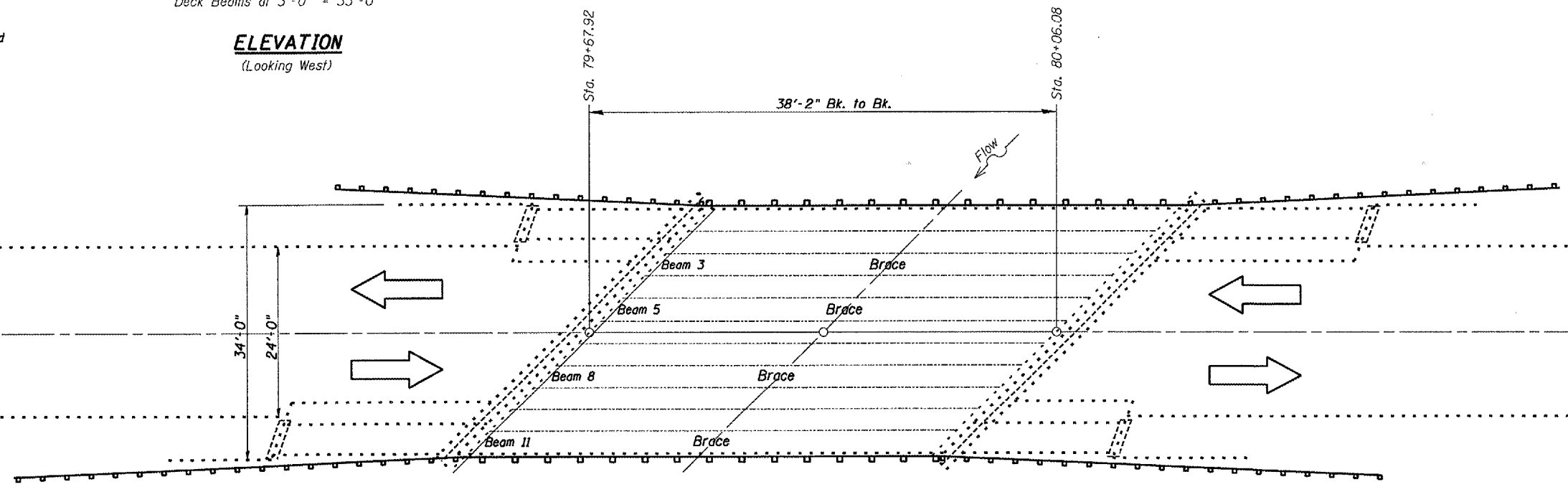
PLOT DATE : 08/09/07
 FILE NAME : I:\FILES\GEN\DRAWING\TSDA\PLUS\SQUAD\1\BRIDGE\CONTRACT\EMERGENCY\PCB\asmt\papa\68765_S118B11.dgn
 PLOT SCALE : AS SHOWN
 REFERENCE : #REF#

F.A.P. RTE.	SECTION	COUNTY	TOTAL SHEETS	SHEET NO.
685	(118B)I	McDONOUGH	11	9
STA. 79+67.92		TO STA. 80+06.08		
FED. ROAD DIST. NO. 4 ILLINOIS FED. AID PROJECT				



PPC Deck Beams to be Braced

ELEVATION
(Looking West)



PLAN

PLOT DATE = 08/10/07
 FILE NAME = #FILEL\68765\DRG\71\STD\PLUS\SDU\41\BRIDGE\CONTRACT\EMERGENCY\PC\Beam\ppair\68765_SIN05-0012_IL_9overLittleCrk.dwg
 PLOTTER = HPGL
 PLOT SCALE = 1/8"=1'-0"
 REFERENCE = REF

NOTES
 Refer to Highway Standard 701201 in conjunction with this sheet for exact placement of traffic management devices and other clarifications as construction is proposed with the use of this standard.

SN.055-0012 IL.9
 over LITTLE CRK.

REVISIONS	
NAME	DATE

ILLINOIS DEPARTMENT OF TRANSPORTATION

TRAFFIC CONTROL

VERT. SCALE: 1/8"=1'-0"
 HORIZ. SCALE: 1/8"=1'-0"
 DATE: 08-10-2007

DRAWN BY: CEJ
 CHECKED BY:

STATE OF ILLINOIS
DEPARTMENT OF TRANSPORTATION

ROUTE NO.	SECTION	COUNTY	TOTAL SHEETS	SHEET NO.
FAP 685	-	McDonough	11	10
FED. ROAD DIST. NO. 7	ALIGNMENT	FED. AID PROJECT		

Contract # 68765

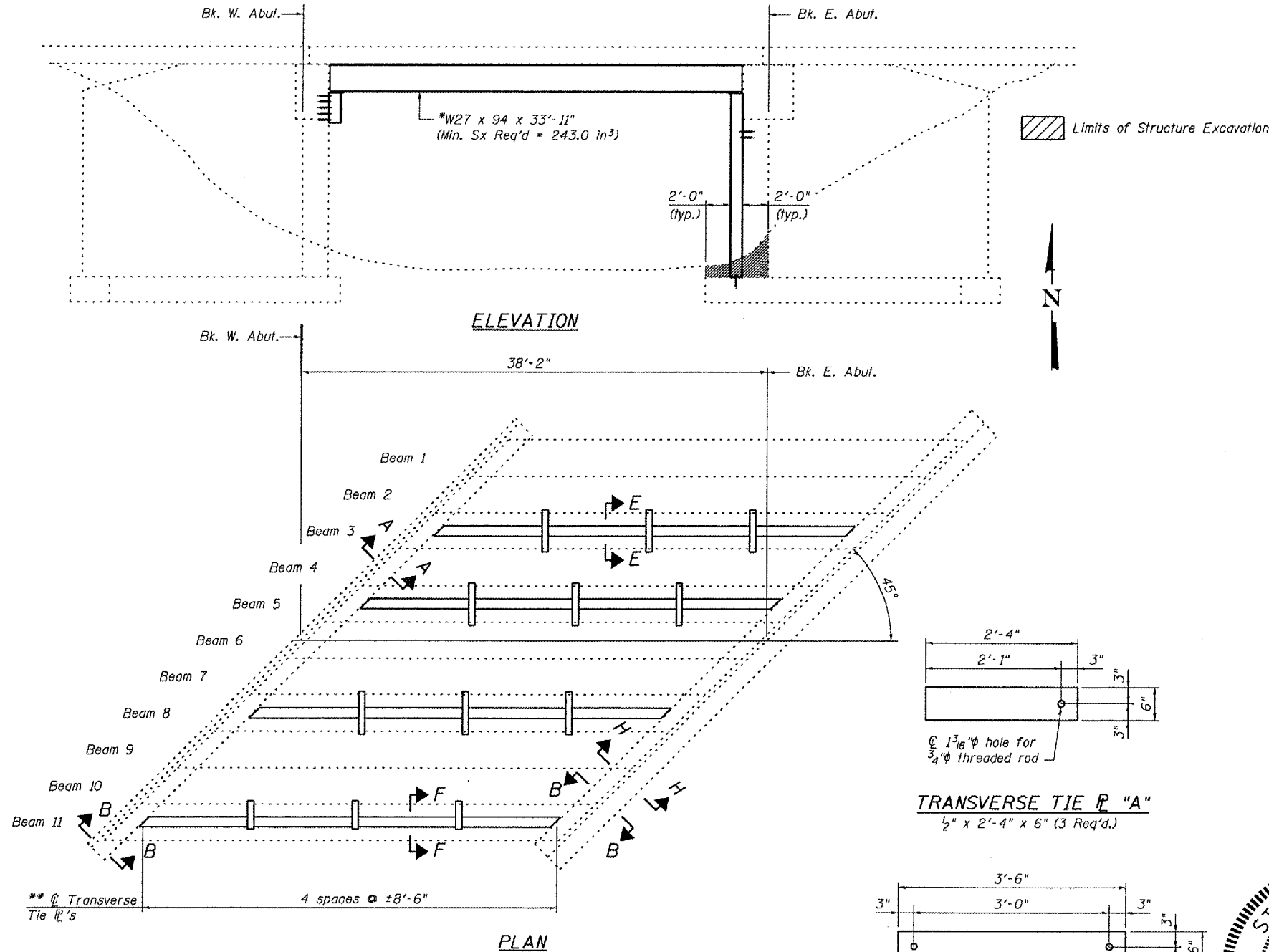
*Contractor is to verify beam length prior to ordering material. Other sections meeting the section modulus requirements shown may be allowed subject to approval by the Bureau of Bridges and Structures.

** ϕ Transverse tie \bar{P} 's (3 per span). Place additional shims at midpoints between tie \bar{P} 's. Securely weld shims to top flange of support beam. Minimum shim size is 6" x flange width. Spacing may be adjusted to miss adjacent transverse tie \bar{P} 's.

GENERAL NOTES

All structural steel shall conform to AASHTO Classification M-270 Gr. 36, unless otherwise noted.
Plan dimensions and details relative to existing plans are subject to routine variations. The Contractor shall field verify existing dimensions and details affecting new construction and make necessary approved adjustments prior to construction or ordering of materials. Such variations shall not be cause for additional compensation for a change in scope of the work, however, the Contractor will be paid for the quantity actually furnished based upon the unit price bid for the work.
See Section 584 of the Standard Specifications for Epoxy Grouting of Threaded Rods; Min. embedment 9".
The cost of epoxy grouting threaded rods shall be included with Furnishing and Erecting Structural Steel.
The contractor is advised that the existing PPC Deck Beams are in a deteriorated condition with reduced load carrying capacity. It is the contractor's responsibility to account for the condition of the beams when developing construction procedures.
If the contractor's procedure for placement of beams involves placement of cranes or other heavy equipment on the bridge, a detailed procedure shall be submitted to the Engineer for approval. The procedure shall include calculations, prepared and sealed by an Illinois Licensed Structural Engineer, verifying that the equipment and procedure used will not overstress the existing beams. To distribute load to multiple beams and protect the existing surface, in all cases a double layer mat of heavy timbers shall be used at all times under crane tracks or wheels and any outriggers in the down position. If necessary, shims shall be used under the crane mat to ensure uniform contact with the underlying beams.
Any dewatering required for the installation of the support columns shall be included in the unit cost for Structure Excavation.

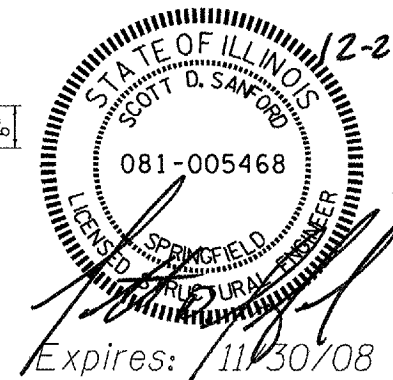
Contractor has the option of using used steel. See Special Provision.



TOTAL BILL OF MATERIAL

ITEM	UNIT	QUANTITY
Furnishing and Erecting Structural Steel	Pound	16,700
Structure Excavation	Cu. Yd.	7

DESIGNED	CMV
CHECKED	SDS
DRAWN	DLH
CHECKED	CMV



GENERAL PLAN AND ELEVATION
REPAIR DETAILS
FAP RTE 685 / IL RTE 9
OVER LITTLE CREEK
McDONOUGH COUNTY
S.N. 055-0012

Operator: cvallmer

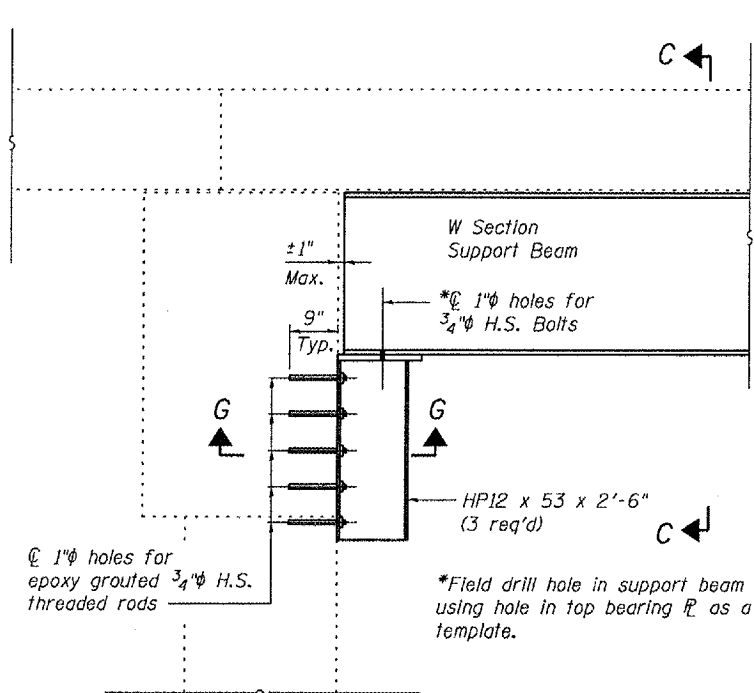
Date: 12/20/2007

Filename: L:\Jobs\IDOT BBS\8727 BBS Various Various\6727.09\CADD_Struct\N. 055-0012\N.S.N. 055-0012_rev 1.dgn

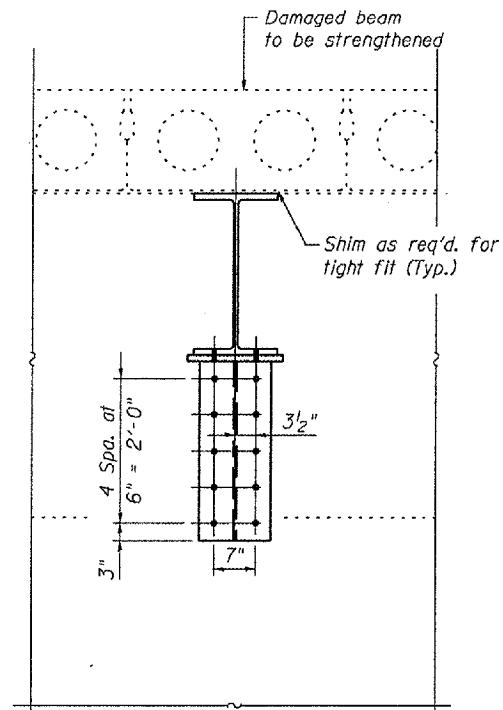
STATE OF ILLINOIS
DEPARTMENT OF TRANSPORTATION

ROUTE NO.	SECTION	COUNTY	TOTAL SHEETS	SHEET NO.	SHEET NO. 2 3 SHEETS
FAP 685		McDonough	11	11	
FED. ROAD DIST. NO. 7		ILLINOIS	FED. AID PROJECT		

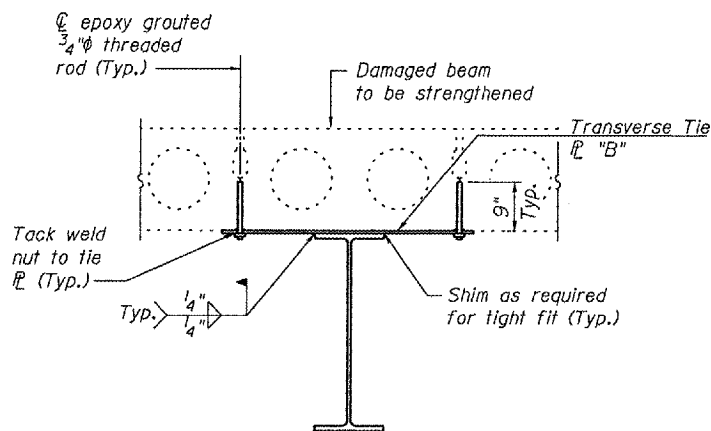
Contract # 68765



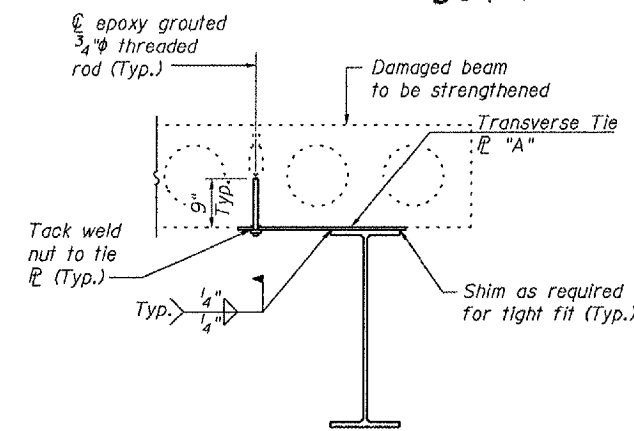
SECTION A-A
(Beams 3, 5 and 8 @ West Abut. Only)



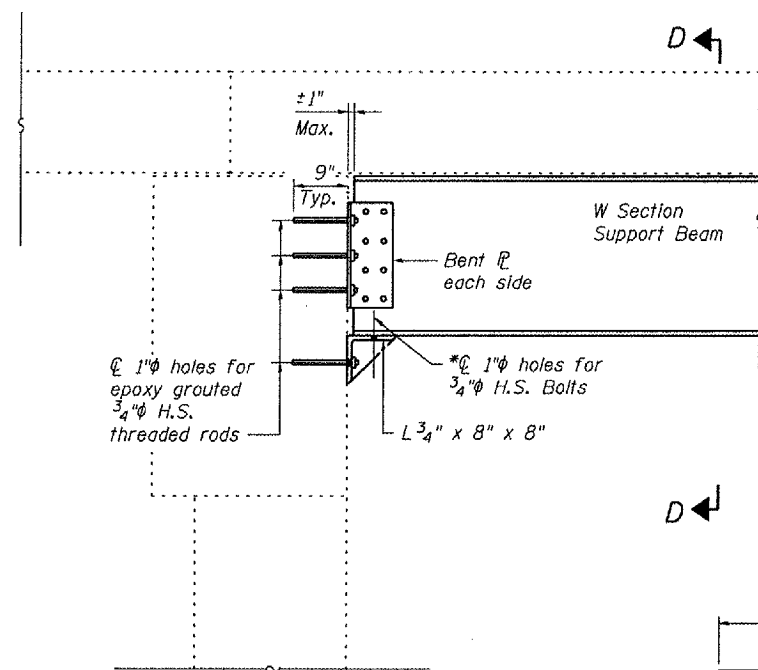
SECTION C-C



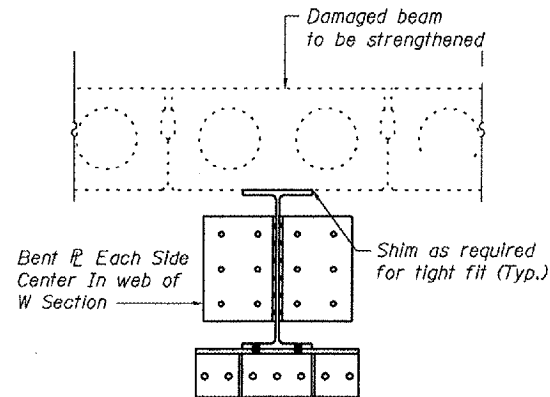
SECTION E-E



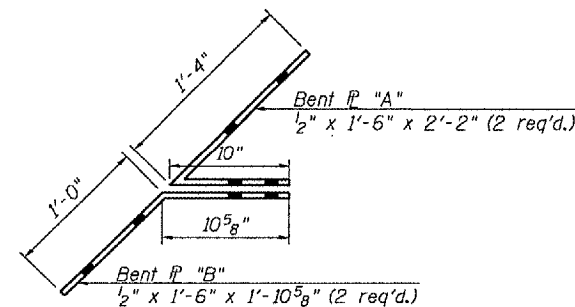
SECTION F-F



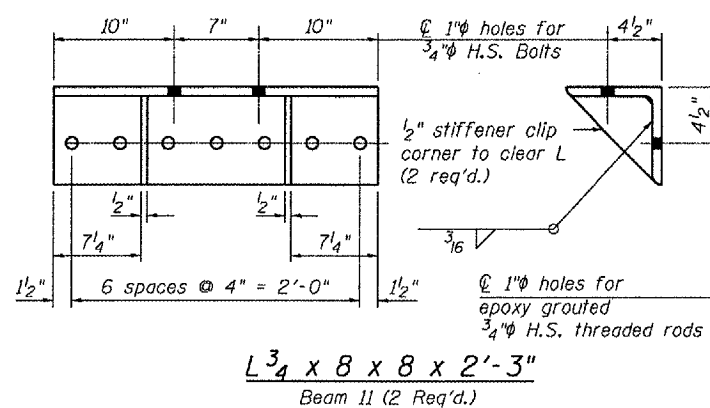
SECTION B-B
(Beam 11 Only)



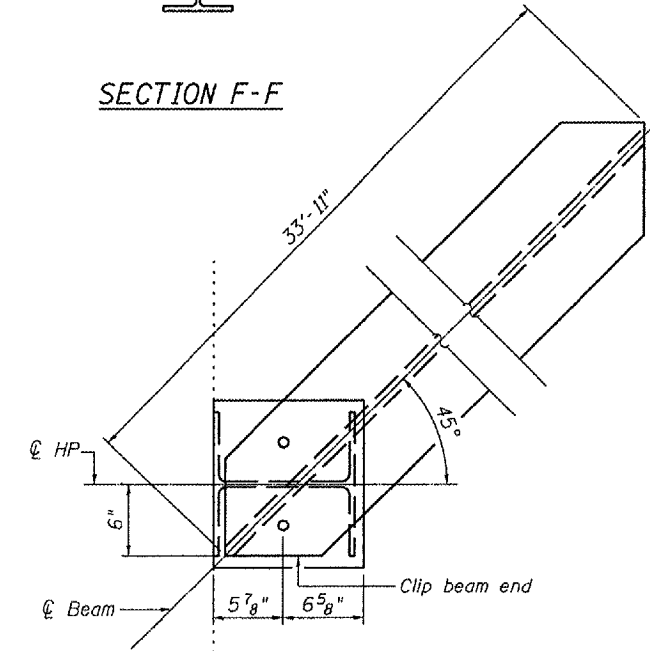
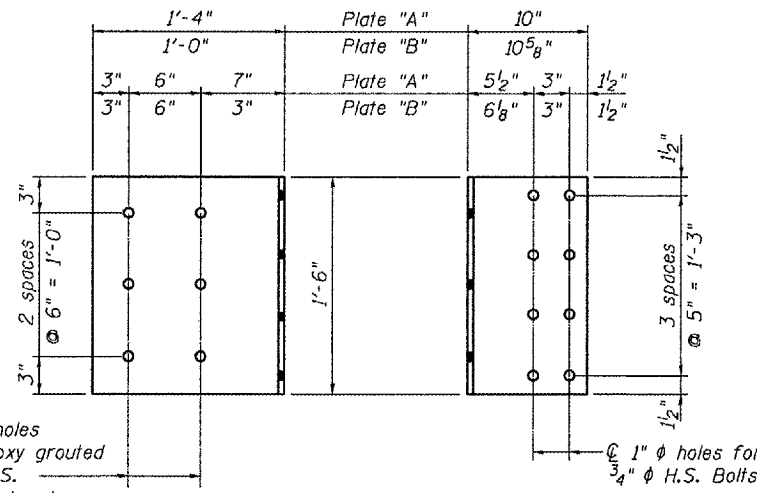
SECTION D-D
(Beam 11 Only)



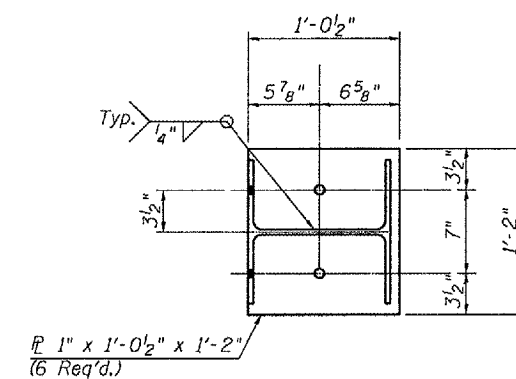
BENT PLATE DETAIL



L 3/4 x 8 x 8 x 2'-3"
Beam 11 (2 Req'd.)



SUPPORT BEAM END DETAIL



SECTION G-G

DESIGNED	CMV
CHECKED	SDS
DRAWN	DLH
CHECKED	CMV

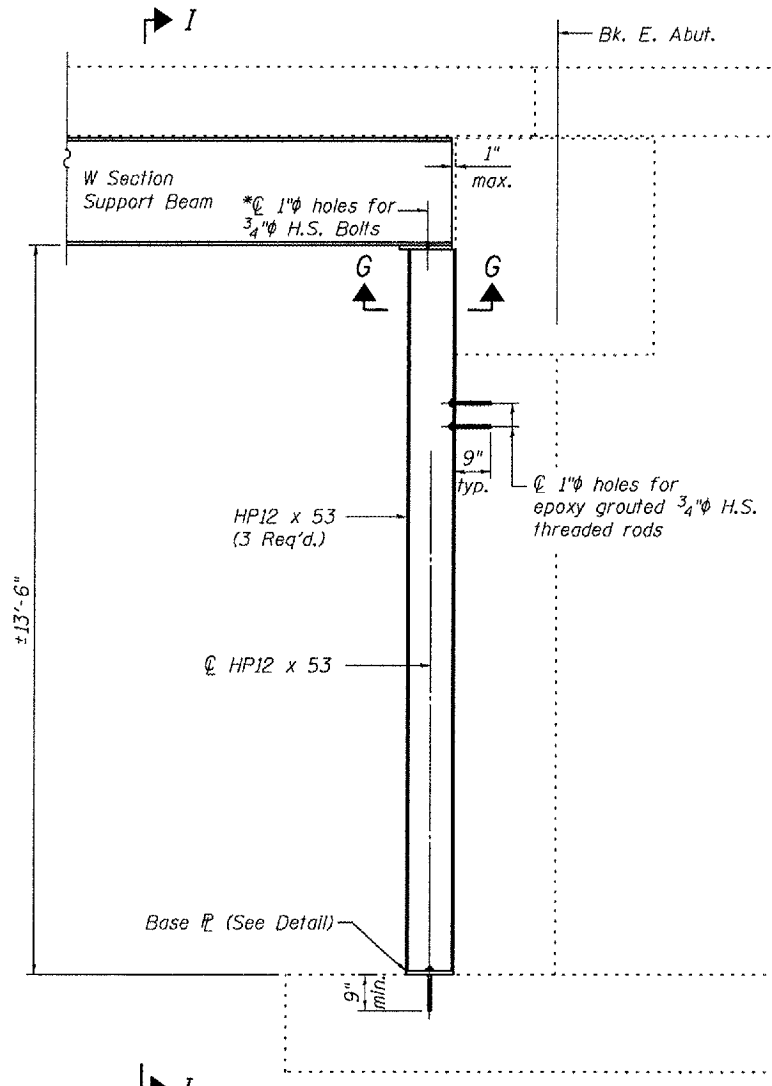
WHKS & CO.
ENGINEERS PLANNERS LAND SURVEYORS
MASON CITY, IOWA DUBUQUE, IOWA AMES, IOWA
E. DUBUQUE, ILLINOIS SPRINGFIELD, ILLINOIS ROCHESTER, MINNESOTA

REPAIR DETAILS
FAP RTE 685 / IL RTE 9
OVER LITTLE CREEK
McDONOUGH COUNTY
S.N. 055-0012

STATE OF ILLINOIS
DEPARTMENT OF TRANSPORTATION

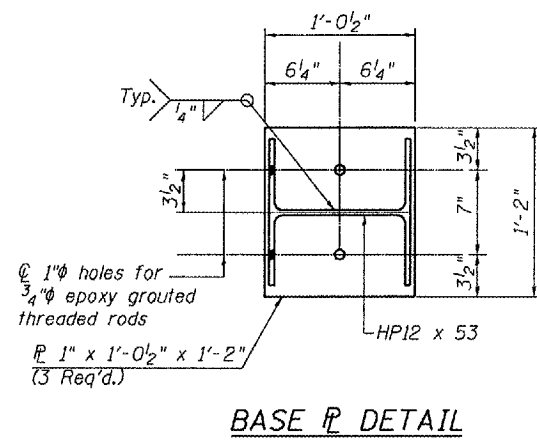
ROUTE NO.	SECTION	COUNTY	DIST.	POST	SHEET NO.
FAP 685	-	McDonough	11	11A	3
FED. ROAD DIST. NO. 7		ILLINOIS		FED. AID PROJECT	

Contract # 68765

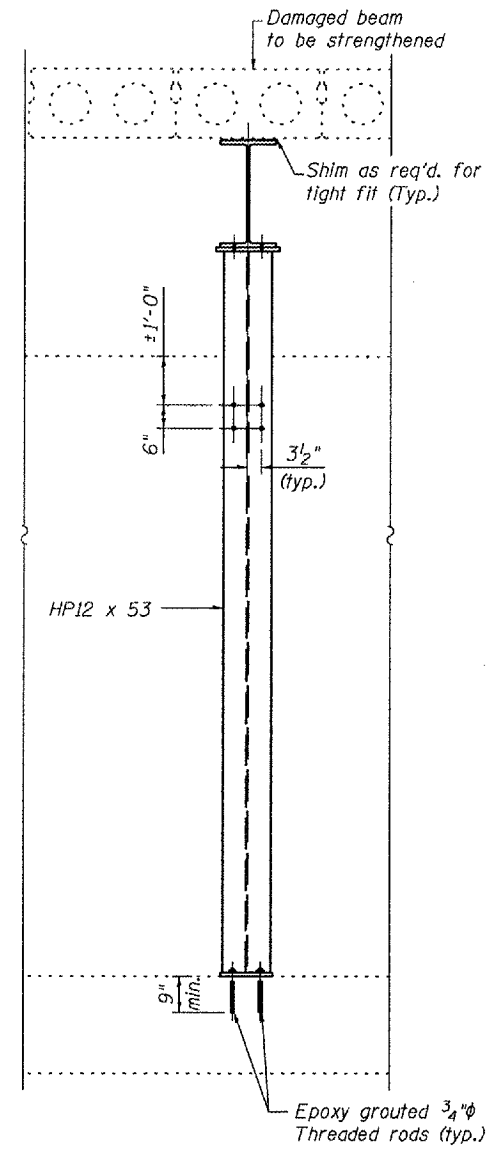


* Field drill hole in support beam using hole in top \bar{r} as a template.

SECTION H-H
(Beams 3, 5 & 8 @ E. Abut. only)



BASE PLATE DETAIL



SECTION I-I

DESIGNED	CMV
CHECKED	SDS
DRAWN	DLH
CHECKED	CMV

WHKS & CO.
ENGINEERS PLANNERS LAND SURVEYORS
MASON CITY, IOWA DUBUQUE, IOWA AMES, IOWA
E. DUBUQUE, ILLINOIS SPRINGFIELD, ILLINOIS ROCHESTER, MINNESOTA

REPAIR DETAILS
FAP RTE 685 / IL RTE 9
OVER LITTLE CREEK
McDONOUGH COUNTY
S.N. 055-0012