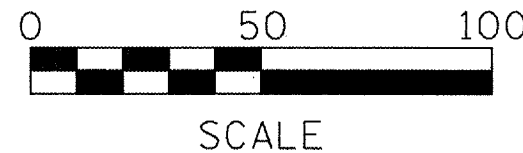
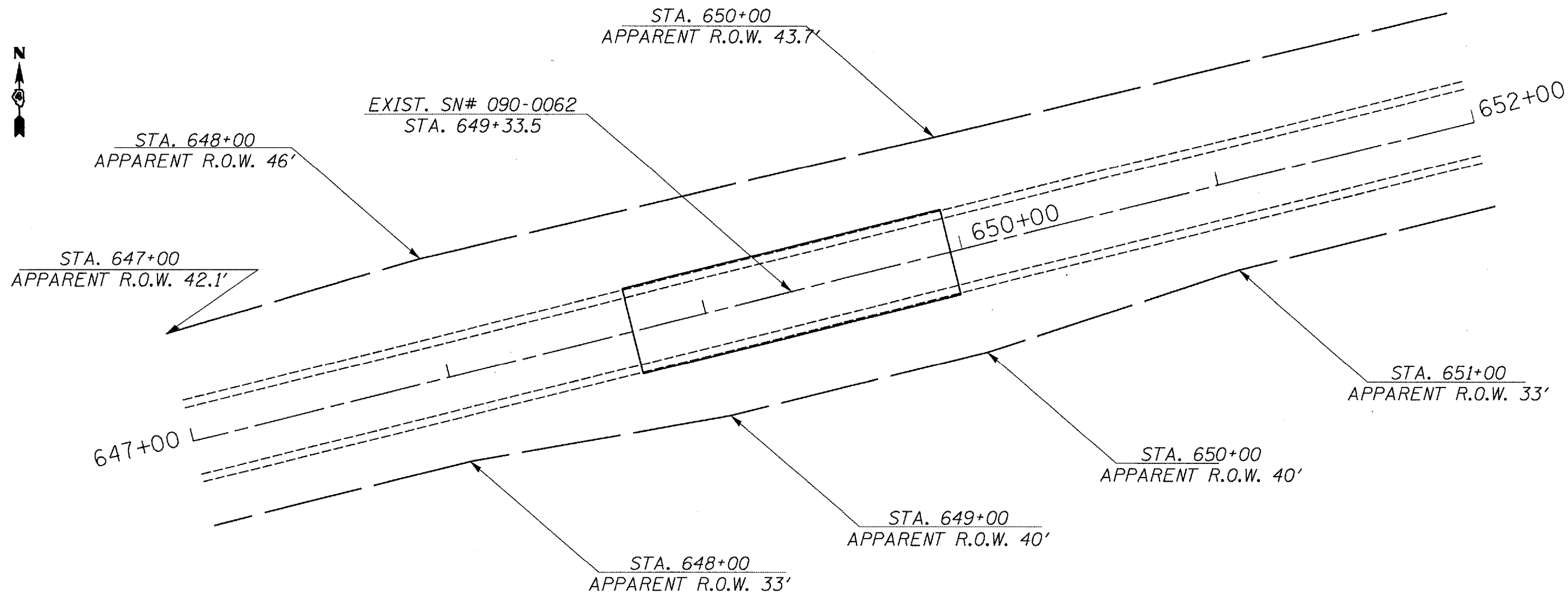


CONTRACTOR ACCESS

No easements have been obtained for this Project.
 Apparent R.O.W. is shown below for information only.
 Limited R.O.W. and Access exist. It is anticipated the Contractor will perform the majority of the work from the Roadway/Bridge surface. The Contractor should note the special requirements for Construction and Engineering listed in the General Notes of the Structures plans. One lane of traffic shall be maintained at all times using Traffic Control and Protection, Standard 701201.



FILE NAME =	USER NAME = jacknw	DESIGNED -	REVISED -	STATE OF ILLINOIS DEPARTMENT OF TRANSPORTATION	CONTRACTOR ACCESS	F.A.P. RTE. 693	SECTION (1198R)	COUNTY TAZEWELL	TOTAL SHEETS 7	SHEET NO. 5	
S:\GEN\DRAWING\STD&PLNS\SOQUAD10\Emergency	Bridge Repair Contracts\19bridge\plan\81.dwg	DRAWN -	REVISED -			SCALE: 50	STA. 647+00 TO STA. 652+00	FED. ROAD DIST. NO.	IL 9	FED. AID PROJECT	CONTRACT NO. 68776
	PLOT SCALE = 41.4828 "/ IN.	CHECKED -	REVISED -								
	PLOT DATE = 12/21/2007	DATE -	REVISED -								