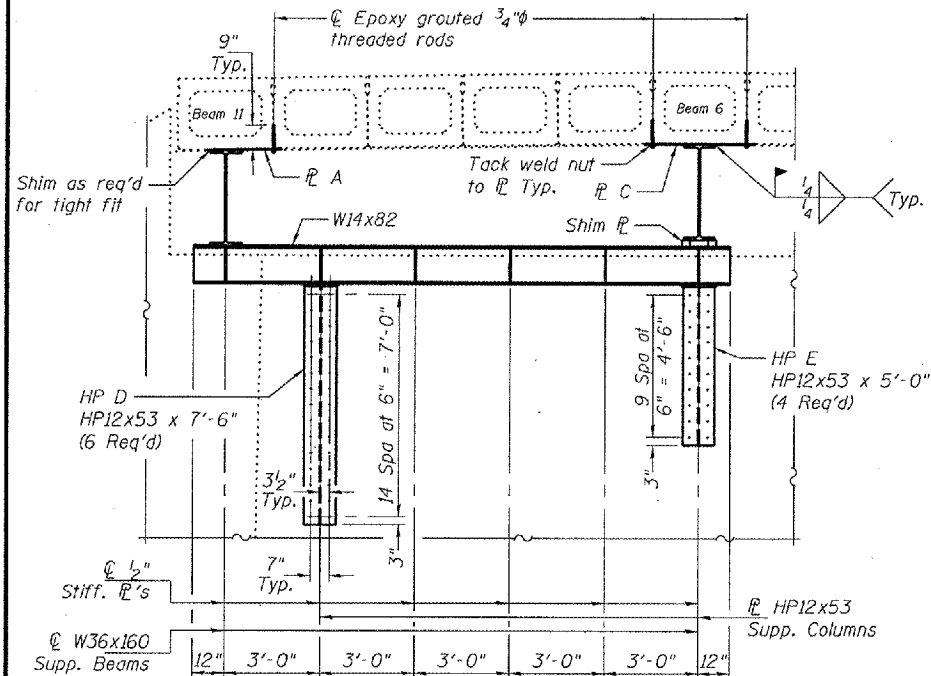


STATE OF ILLINOIS  
DEPARTMENT OF TRANSPORTATION

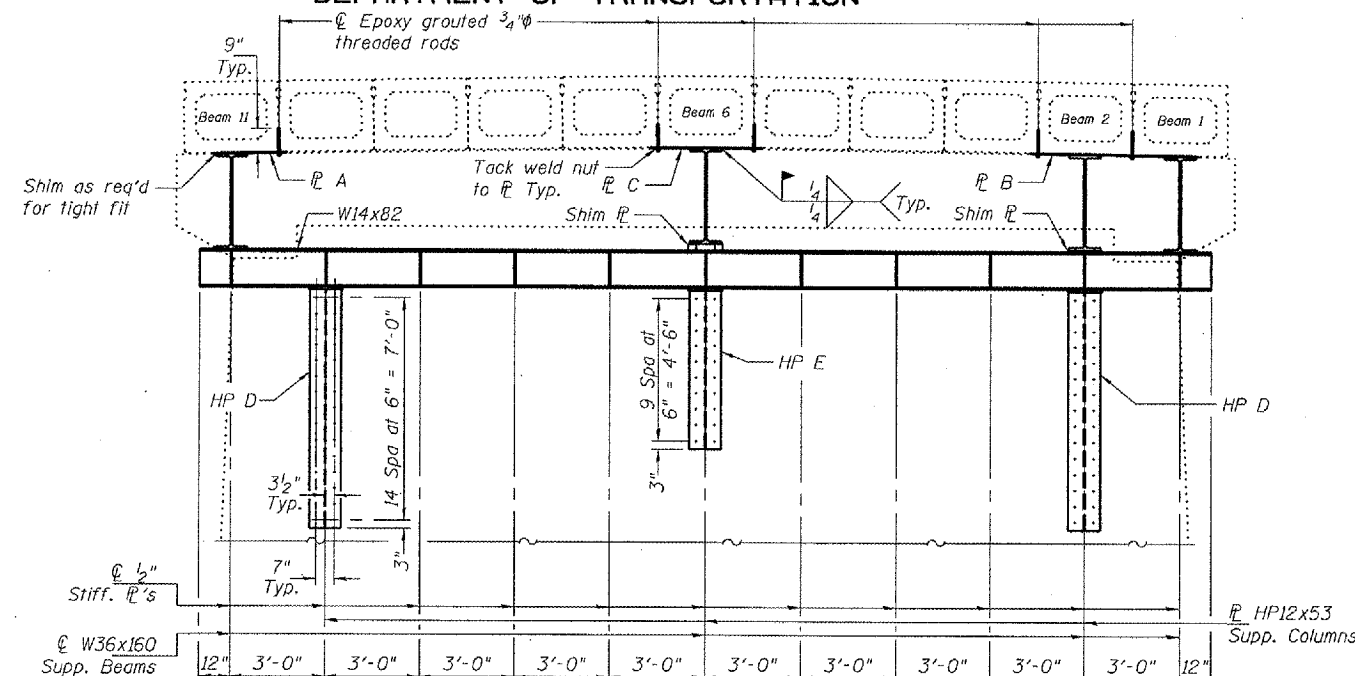
|                       |          |                  |              |           |
|-----------------------|----------|------------------|--------------|-----------|
| ROUTE NO.             | SECTION  | COUNTY           | TOTAL SHEETS | SHEET NO. |
|                       |          | Tozawell         | 7            | 7         |
| FED. ROAD DIST. NO. 7 | ILLINOIS | FED. AID PROJECT |              |           |

Contract Number: 72B78

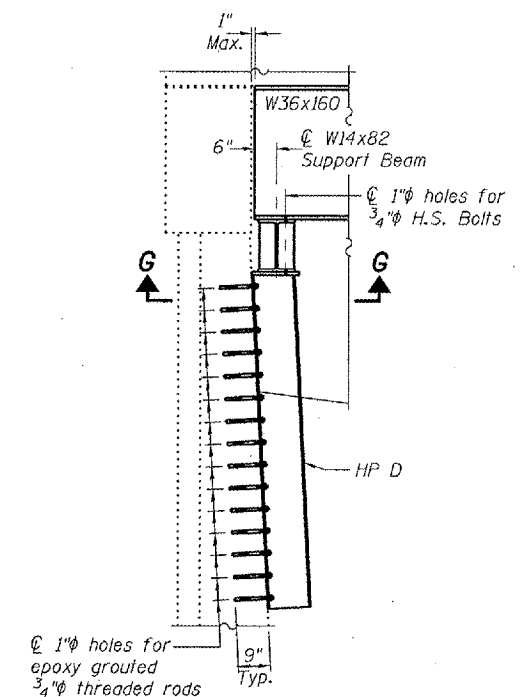
SHEET NO. 2  
2 SHEETS



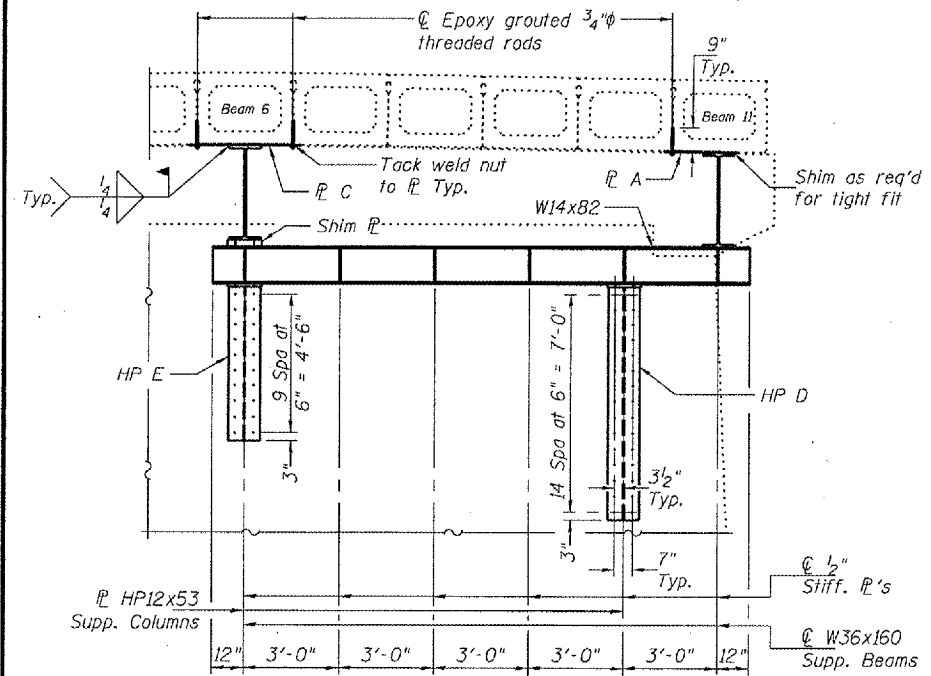
SECTION A-A



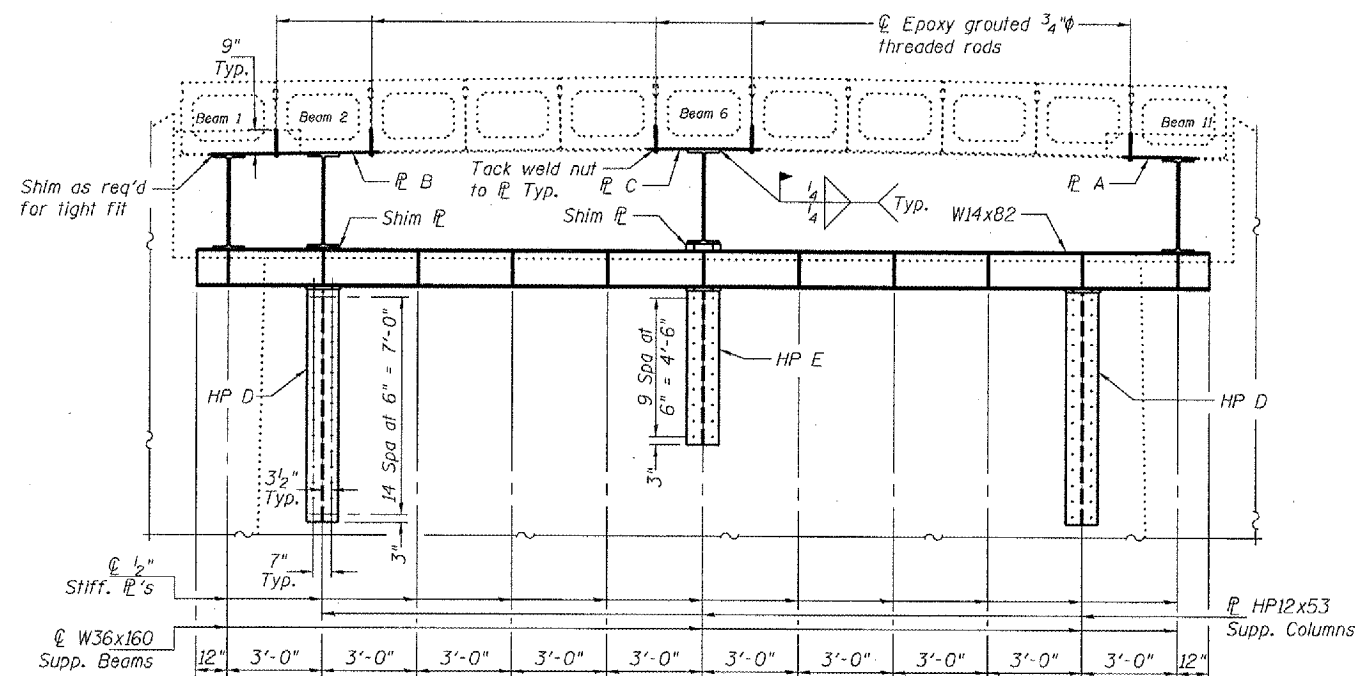
SECTION C-C



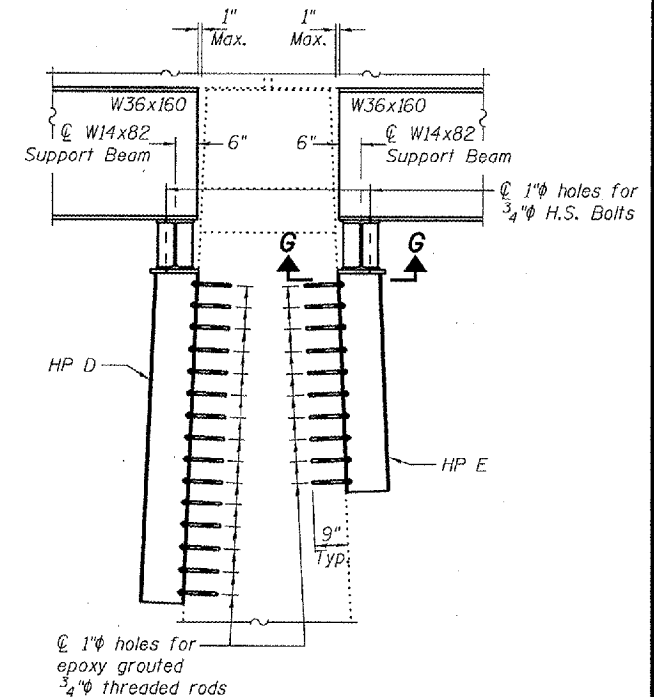
SECTION E-E



SECTION B-B



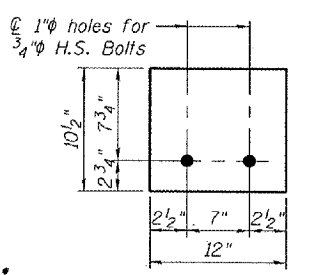
SECTION D-D



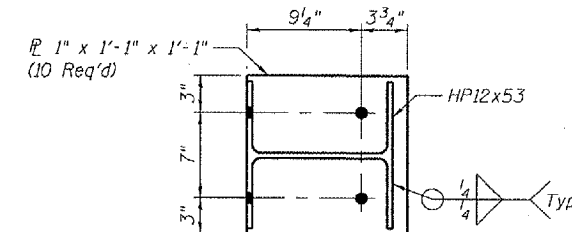
SECTION F-F

SHIM R THICKNESS

| Deck Beam | Span | Thickness |
|-----------|------|-----------|
| 6         | 1    | 2 1/2"    |
| 2         | 2    | 9/16"     |
| 6         | 2    | 2 1/2"    |



TYPICAL SHIM



SECTION G-G

|          |                  |
|----------|------------------|
| DESIGNED | A.T.H.           |
| CHECKED  | A.J.B.           |
| DRAWN    | Drew Christopher |
| CHECKED  | A.T.H. A.J.B.    |

January 3, 2008  
EXAMINED *Carl Henry*  
ENGINEER OF STRUCTURAL SERVICES  
PASSED *Ralph E. Anderson*  
ENGINEER OF BRIDGES AND STRUCTURES

SUPPORT DETAILS  
F.A. RT. 164  
TAZEWELL COUNTY  
SN 090-0062