

F.A.P. RTE.	SECTION	COUNTY	TOTAL SHEETS	SHEET NO.
693	(119BR)I	TAZEWELL	7	1
FED. ROAD DIST. NO.	IL 9	CONTRACT NO. 68776		

STATE OF ILLINOIS
DEPARTMENT OF TRANSPORTATION

DIVISION OF HIGHWAYS
**PROPOSED
HIGHWAY PLANS**

FAP ROUTE 693 (IL 9)
SECTION (119BR)I

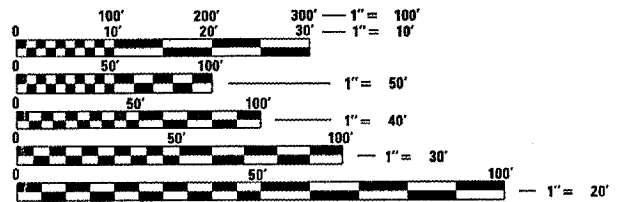
EMERGENCY BRIDGE REPAIRS
TAZEWELL COUNTY
C-94-013-08

- INDEX OF SHEETS**
1. COVER SHEET
 2. GENERAL NOTES
 3. SUMMARY OF QUANTITIES
 4. TYPICAL SECTION
 5. CONTRACTOR ACCESS
 - 6.-7. STRUCTURE PLANS
HIGHWAY STANDARDS

- LIST OF STANDARDS**
- 000001-05
 - 001001-01
 - 280001-04
 - 701006-02
 - 701011-01
 - 701201-02
 - 701301-02
 - 701901

DESIGN DESIGNATION

MINOR ARTERIAL
ADT = 3700 (2005)
SU = 175
MU = 175

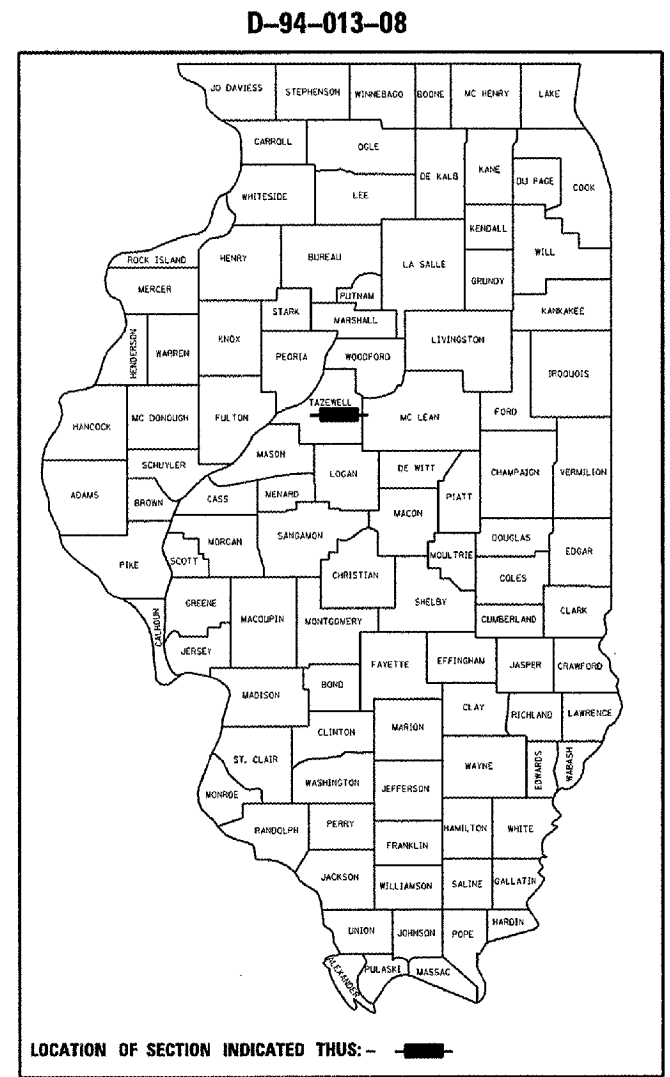


FULL SIZE PLANS HAVE BEEN PREPARED USING STANDARD ENGINEERING SCALES. REDUCED SIZED PLANS WILL NOT CONFORM TO STANDARD SCALES. IN MAKING MEASUREMENTS ON REDUCED PLANS, THE ABOVE SCALES MAY BE USED.

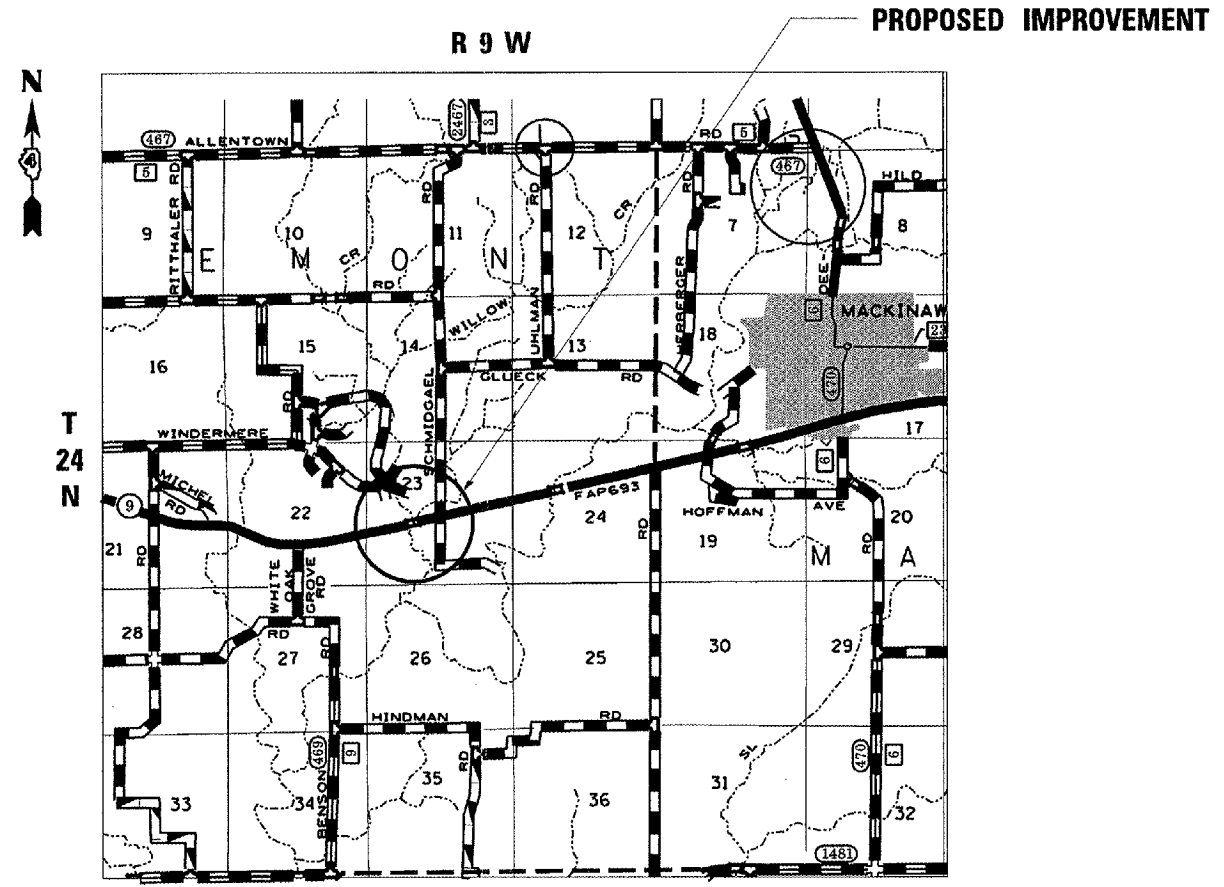
J.U.L.I.E.
JOINT UTILITY LOCATION INFORMATION FOR EXCAVATION
1-800-892-0123
OR 811

SQUAD LEADER NICHOLAS JACK
CONTRACT NO. 68776
CATALOG NO. 033640-000

GROSS LENGTH OF PROJECT = 124 FEET
NET LENGTH OF PROJECT = 124 FEET



DESCRIPTION:
EMERGENCY BRIDGE REPAIRS BRACING 6 BEAMS ON STRUCTURE CARRYING IL 9 OVER MUD CREEK (S.N. 090-0062), 2.5 MILES WEST OF MACKINAW STA. 649 + 33.5



STATE OF ILLINOIS
DEPARTMENT OF TRANSPORTATION
DIVISION OF HIGHWAYS

SUBMITTED DEC 19 20 07

[Signature]
DEPUTY DIRECTOR OF HIGHWAYS, REGION ENGINEER

February 1, 20 08
[Signature]
ENGINEER OF DESIGN AND ENVIRONMENT

Interim
February 1, 20 08
[Signature]
DIRECTOR OF HIGHWAYS, CHIEF ENGINEER

PRINTED BY THE AUTHORITY
OF THE STATE OF ILLINOIS

GENERAL NOTES

Plan dimensions and details relative to existing structure have been taken from existing plans and are subject to nominal construction variations. It shall be the Contractor's responsibility to verify such dimensions and details in the field and make necessary approved adjustments prior to construction or ordering of materials. Such variations shall not be cause for additional compensation for a change in the scope of the work, however, the Contractor will be paid for the quantity actually furnished at the unit price bid for the work.

ENVIRONMENTAL REVIEWS

Prior to the use of any proposed borrow areas, use areas (temporary access roads, detours, run-arounds, etc.) and/or waste areas, the Contractor shall file the required environmental resource request surveys according to Section 107.22 of the Standard Specifications. These surveys are required in order for the Department to conduct cultural and biological resource surveys for the proposed site.

Prior to any waste materials being removed from the construction site the required environmental resource surveys will need to be obtained and filed by the Contractor. Excess waste products removed from the construction site shall be disposed of as required in Section 202.03 of the Standard Specifications.

Any protruding metal bars shall be removed prior to the disposal of broken concrete at approved disposal sites.

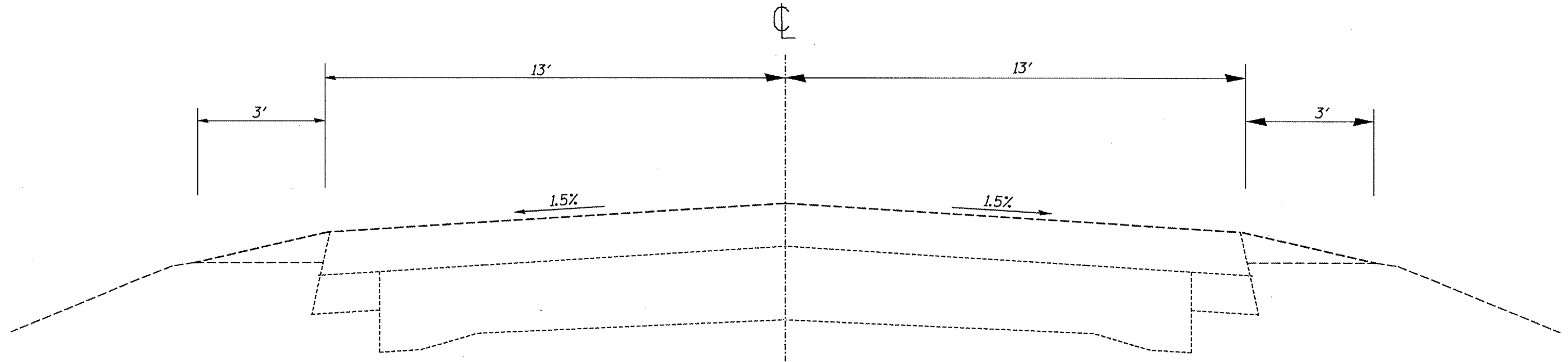
The required environmental resource documentation shall include the following:

- * BDE Form 2289 (Environmental Survey Request)
- * A location map showing the size limits and location of the use area
- * Signed property owner agreement form-D4 P10100
- * Color photographs depicting the use area
- * Borrow Area Entry Agreement form-D4 P10101

Please note that a minimum of two weeks shall be allowed for the District to obtain the required environmental clearances.

FILE NAME =	USER NAME = Jackrw	DESIGNED -	REVISED -	STATE OF ILLINOIS DEPARTMENT OF TRANSPORTATION	GENERAL NOTES	F.A.P. RTE.	SECTION	COUNTY	TOTAL SHEETS	SHEET NO.	
S:\GEN\DRIFT\STD&PLNS\SQUAD10\Emergency	Bridge Repair Contracts\119\bridge\plan01.dgn	DRAWN -	REVISED -			693	(119BR)	TAZEWELL	7	2	
PLOT SCALE = 100.0000' / IN.	CHECKED -	REVISED -	CONTRACT NO. 68776								
PLOT DATE = 12/21/2007	DATE -	REVISED -	FED. ROAD DIST. NO. IL 9 FED. AID PROJECT								

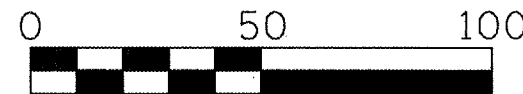
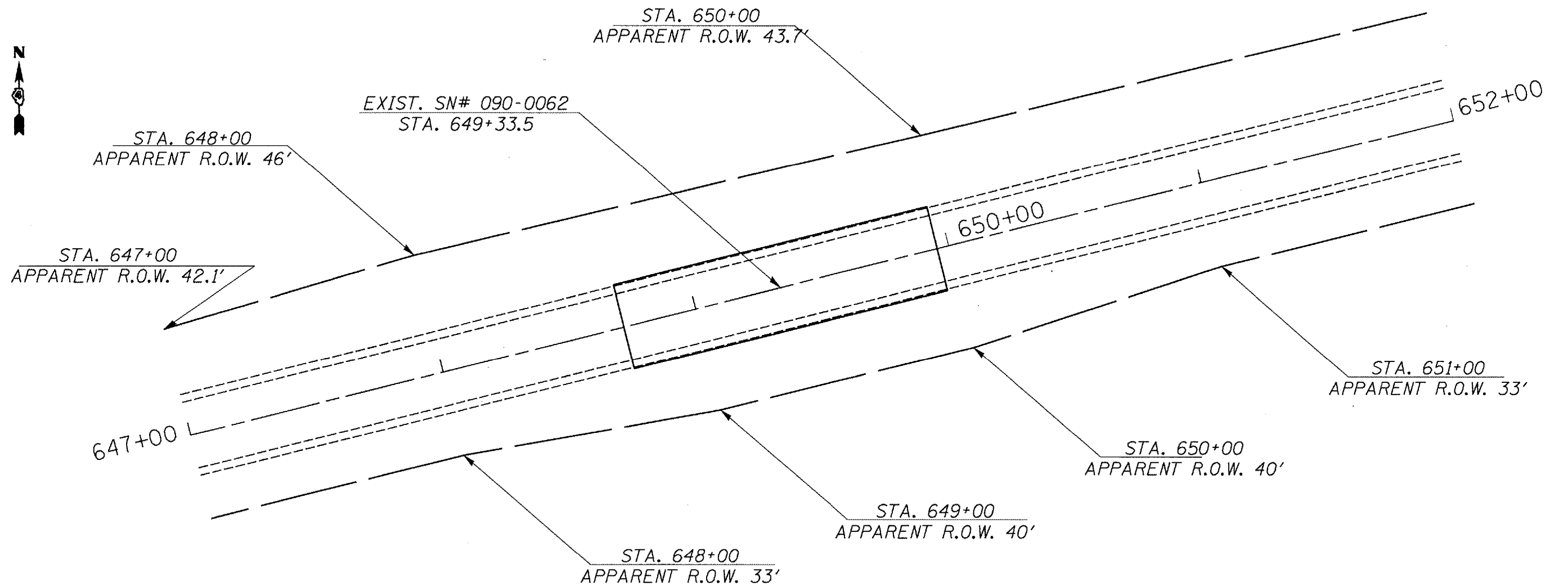
TYPICAL SECTION



FILE NAME =	USER NAME = jacknw	DESIGNED -	REVISED -	STATE OF ILLINOIS DEPARTMENT OF TRANSPORTATION	TYPICAL SECTION		F.A.P. RTE.	SECTION	COUNTY	TOTAL SHEETS	SHEET NO.
S:\GEN\DRAWING\STD&PLNS\SQUAD10\Emergency Bridge Repair Contracts\119\bridge\plan01.dwg	PLOT SCALE = 100.0000' / IN.	DRAWN -	REVISED -				693	(119BR)I	TAZEWELL	7	4
PLOT DATE = 12/21/2007	DATE -	CHECKED -	REVISED -		SCALE: NONE		STA.	TO STA.	CONTRACT NO. 68776		
									FED. ROAD DIST. NO. IL 9 FED. AID PROJECT		

CONTRACTOR ACCESS

No easements have been obtained for this Project.
 Apparent R.O.W. is shown below for information only.
 Limited R.O.W. and Access exist. It is anticipated the Contractor will perform the majority of the work from the Roadway/Bridge surface. The Contractor should note the special requirements for Construction and Engineering listed in the General Notes of the Structures plans. One lane of traffic shall be maintained at all times using Traffic Control and Protection, Standard 701201.



SCALE

FILE NAME =	USER NAME = jacknw	DESIGNED -	REVISED -	STATE OF ILLINOIS DEPARTMENT OF TRANSPORTATION	CONTRACTOR ACCESS	F.A.P. RTE. 693	SECTION (1198R)	COUNTY TAZEWELL	TOTAL SHEETS 7	SHEET NO. 5	
S:\GEN\DRAWING\STD&PLNS\SO\AD10\Emergency	Bridge Repair Contracts\19bridge\plan\81.d	DRAWN -	REVISED -			SCALE: 50	STA. 647+00 TO STA. 652+00	FED. ROAD DIST. NO.	IL 9	FED. AID PROJECT	CONTRACT NO. 68776
		CHECKED -	REVISED -								
		DATE -	REVISED -								

STATE OF ILLINOIS
DEPARTMENT OF TRANSPORTATION

ROUTE NO.	SECTION	COUNTY	SHEET NO.	SHEET
		Tazewell	7	6
FED. ROAD DIST. NO. 7		ILLINOIS	FED. AID PROJECT	

SHEET NO. 1
2 SHEETS

Contract Number: 72B78

GENERAL NOTES

All structural steel shall conform to AASHTO Classification M-270 Gr. 36, unless otherwise noted.

Plan dimensions and details relative to existing plans are subject to routine variations. The Contractor shall field verify existing dimensions and details affecting new construction and make necessary approved adjustments prior to construction or ordering of materials. Such variations shall not be cause for additional compensation for a change in scope of the work, however, the Contractor will be paid for the quantity actually furnished based upon the unit price bid for the work.

The contractor is advised that the existing PPC Deck Beams are in a deteriorated condition with reduced load carrying capacity. It is the contractor's responsibility to account for the condition of the beams when developing construction procedures.

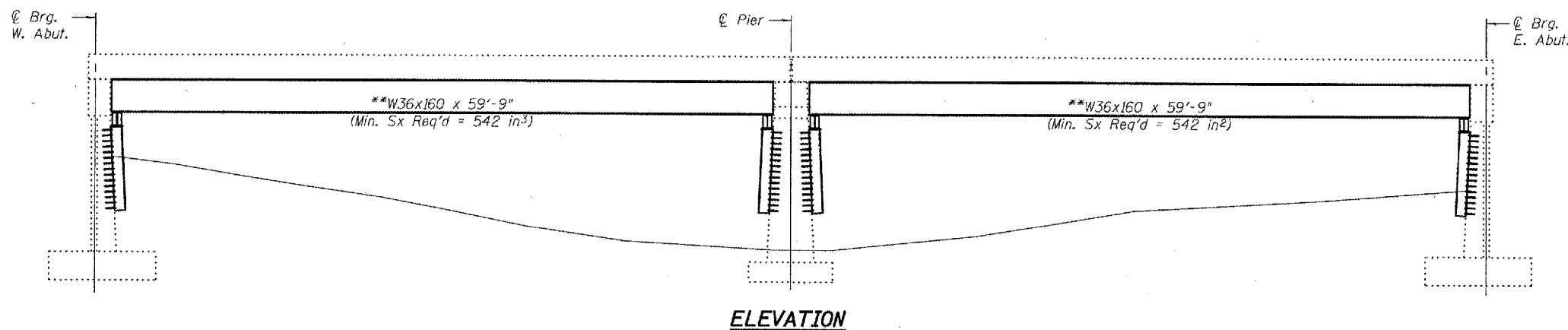
See Section 584 of the Standard Specifications for Epoxy Grouting of Threaded Rods; Minimum embedment 9".

If the contractor's procedure for placement of beams involves placement of cranes or other heavy equipment on the bridge, a detailed procedure shall be submitted to the Engineer for approval. The procedure shall include calculations, prepared and sealed by an Illinois Licensed Structural Engineer, verifying that the equipment and procedure used will not overstress the existing beams. To distribute load to multiple beams and protect the existing surface, in all cases a double layer mat of heavy timbers shall be used at all times under crane tracks or wheels and any outriggers in the down position. If necessary, shims shall be used under the crane mat to ensure uniform contact with the underlying beams.

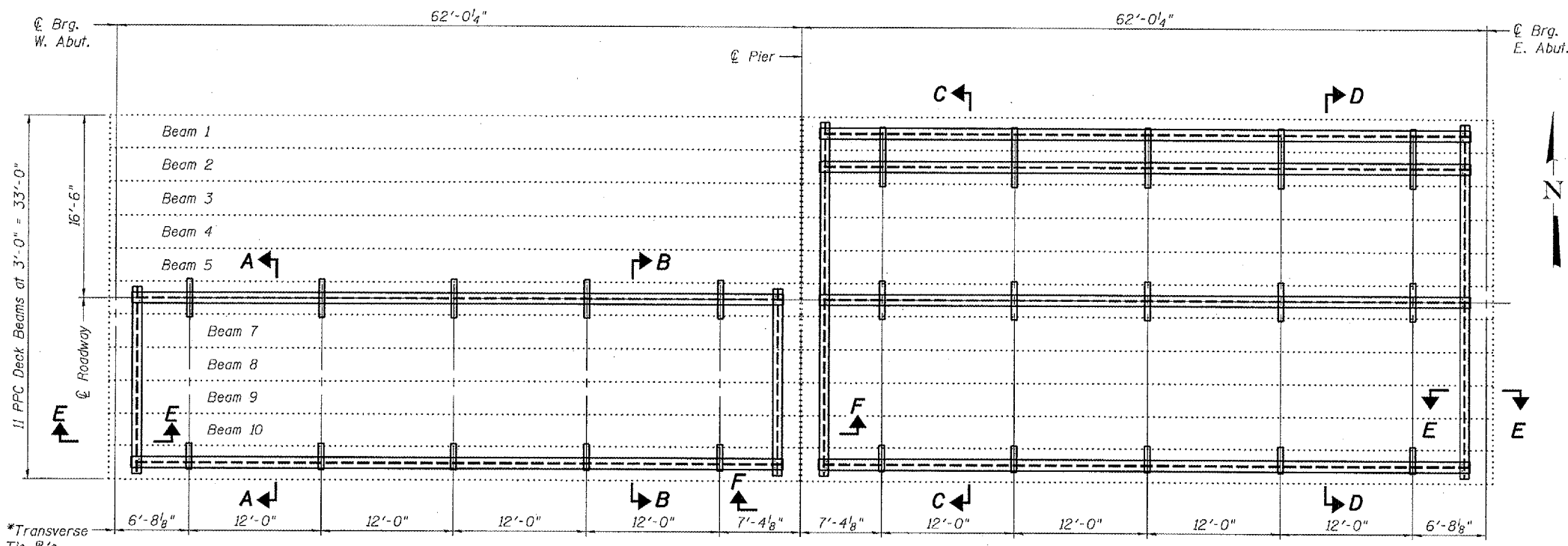
The cost of epoxy grouting threaded rods on the pier cap, abutments and beams shall be included with Furnishing and Erecting Structural Steel.

The Contractor has the option of using used steel. See Special Provisions..

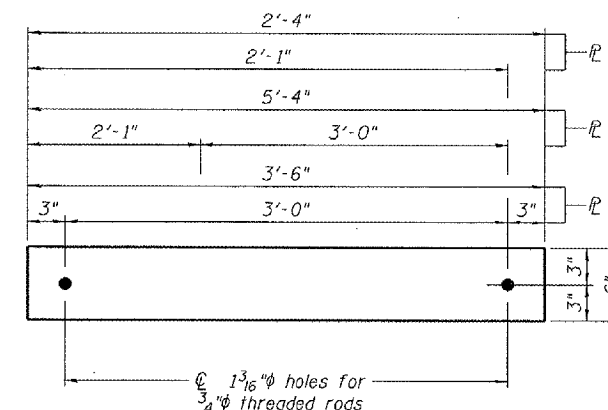
The cost of excavation required to set piles on footings shall be included with Furnishing and Erecting Structural Steel.



ELEVATION



PLAN



TRANSVERSE TIE R'S

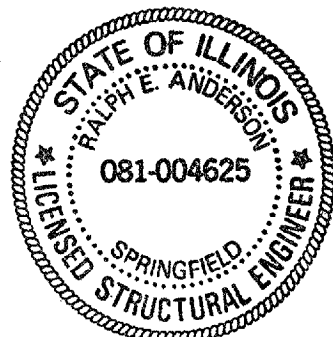
- R A 1/2" x 2'-4" x 6" (10 Req'd)
- R B 1/2" x 5'-4" x 6" (5 Req'd)
- R C 1/2" x 3'-6" x 6" (10 Req'd)



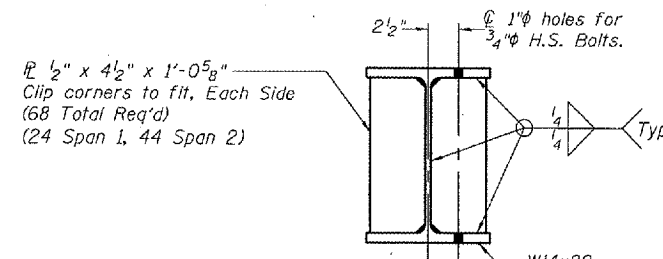
TYPICAL TOP OF HP SLOPE CUT AT ABUTMENTS **TYPICAL TOP OF HP SLOPE CUT AT PIER**

DESIGNED	Adrian S. Hoffmayer
CHECKED	[Signature]
DRAWN	[Signature]
CHECKED	AT+ ABB

EXAMINED	[Signature]	January 3, 2008
PASSED	[Signature]	



*R Transverse tie R's (5 per span). Place additional shims at midpoints between tie R's. Securely weld shims to top flange of support beam. Minimum shim size is 6" x flange width.
**Contractor is to verify beam length prior to ordering material. Other sections meeting the section modulus requirements shown may be allowed subject to approval by the Bureau of Bridges and Structures. Maximum Girder depth = 36". No additional payment will be allowed if the contractor chooses a heavier steel section than the one specified in the plans



TYPICAL CROSS SUPPORT BEAM SECTION

TOTAL BILL OF MATERIAL

ITEM	UNIT	QUANTITY
Furnishing and Erecting Structural Steel	Pound	71720

PLAN AND ELEVATION
F.A. RT. 164
TAZEWELL COUNTY
SN 090-0062

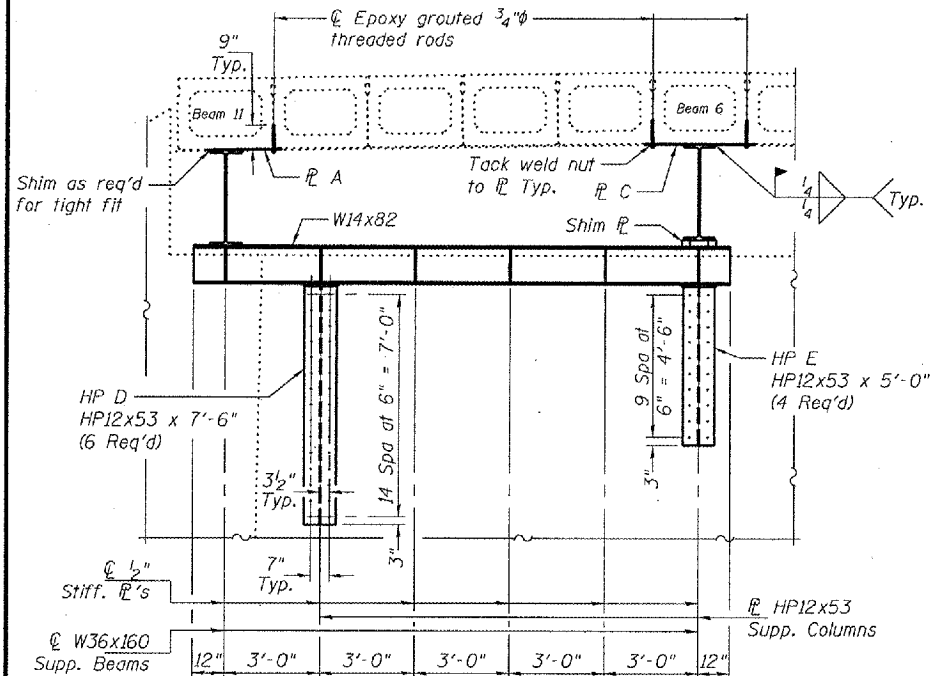
Expires: November 30, 2008

STATE OF ILLINOIS
DEPARTMENT OF TRANSPORTATION

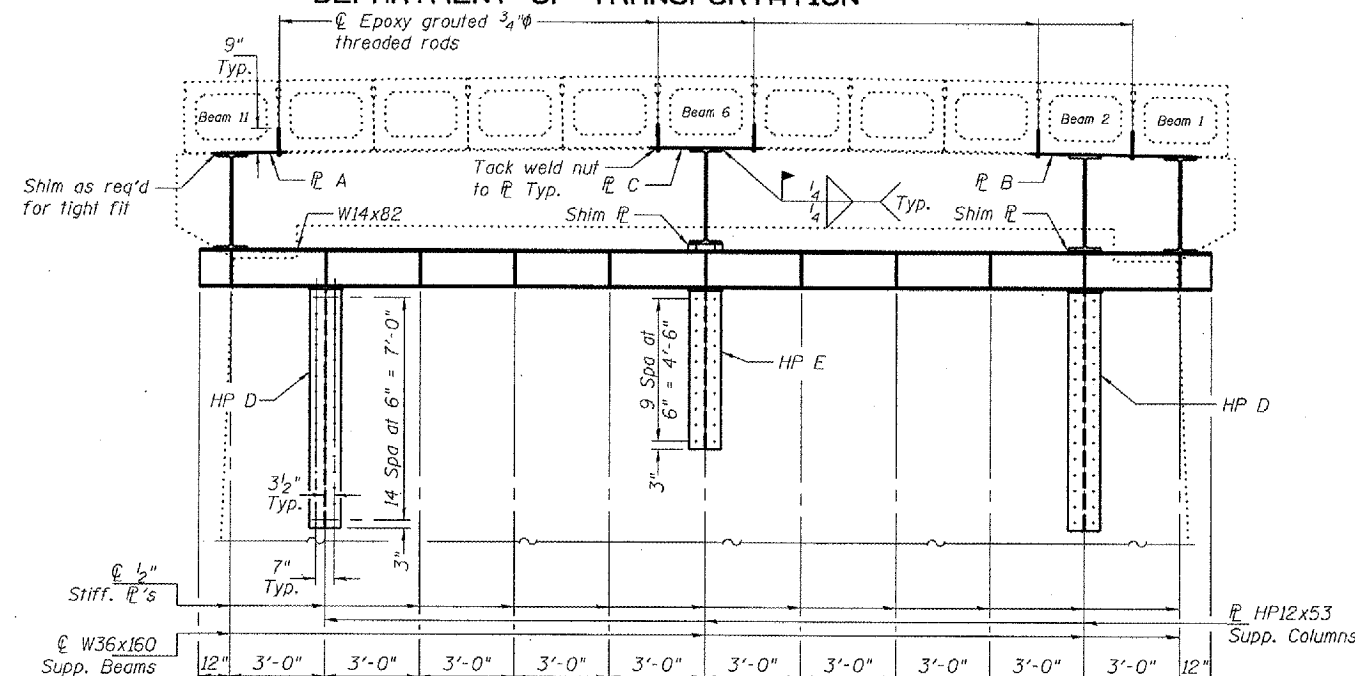
ROUTE NO.	SECTION	COUNTY	TOTAL SHEETS	SHEET
		Tozawell	7	7
FED. ROAD DIST. NO. 7	ILLINOIS	FED. AID PROJECT		

SHEET NO. 2
2 SHEETS

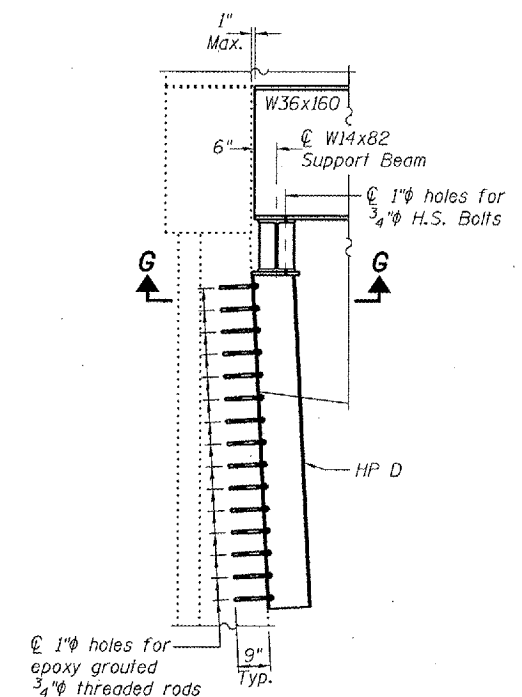
Contract Number: 72B78



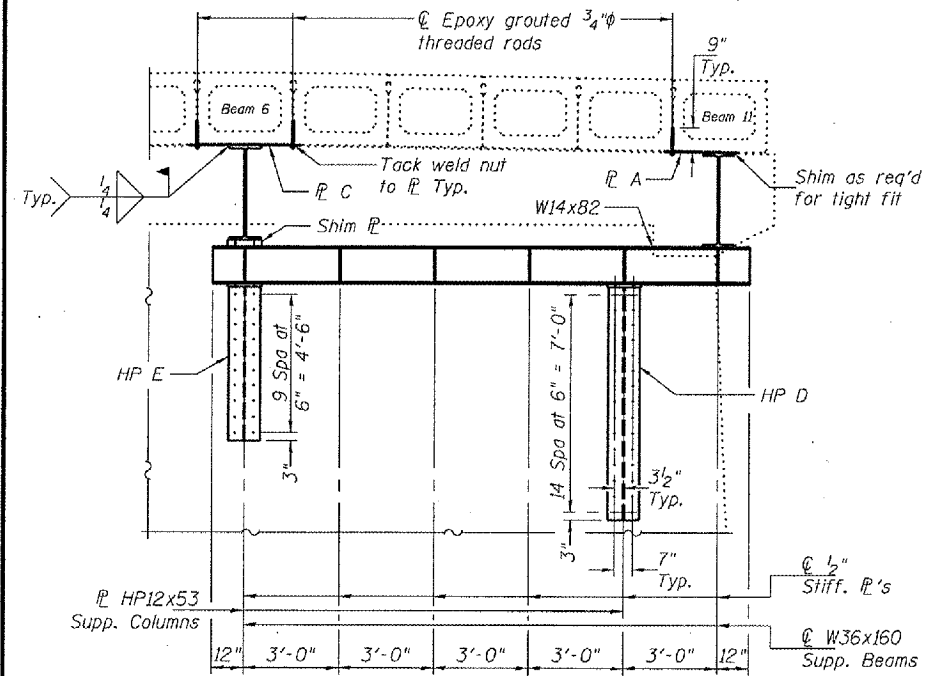
SECTION A-A



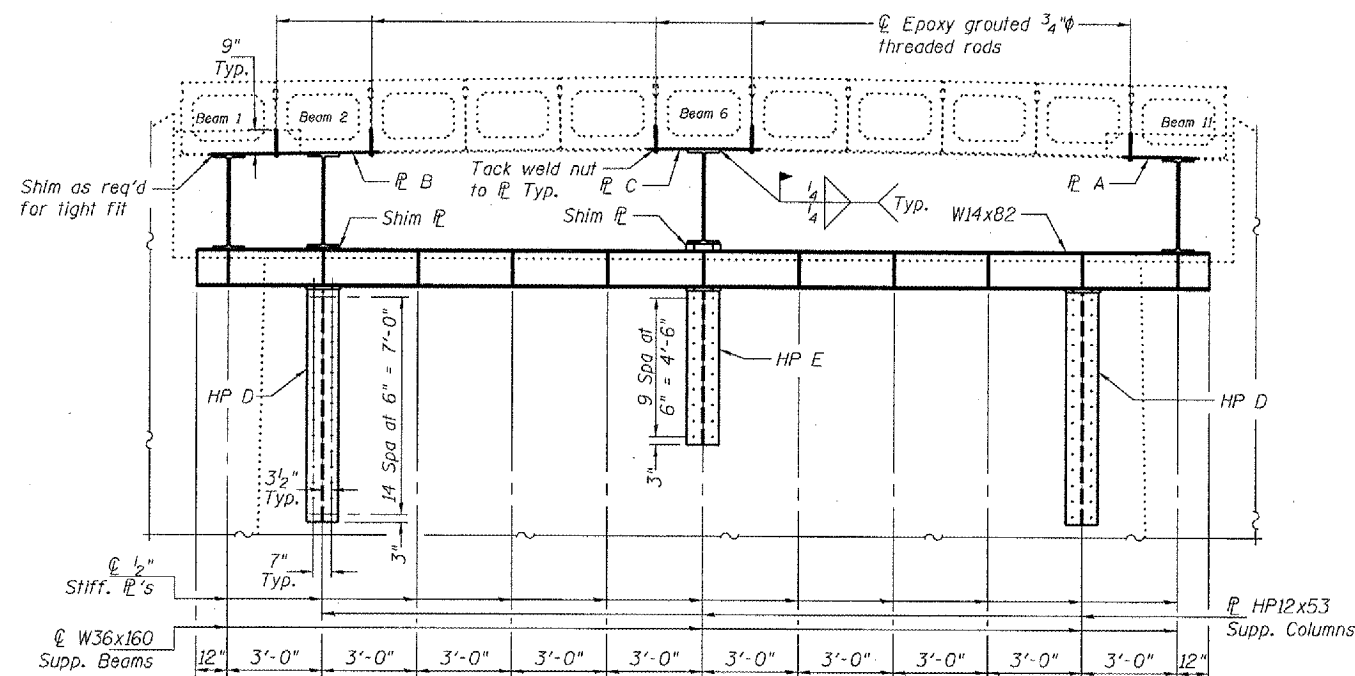
SECTION C-C



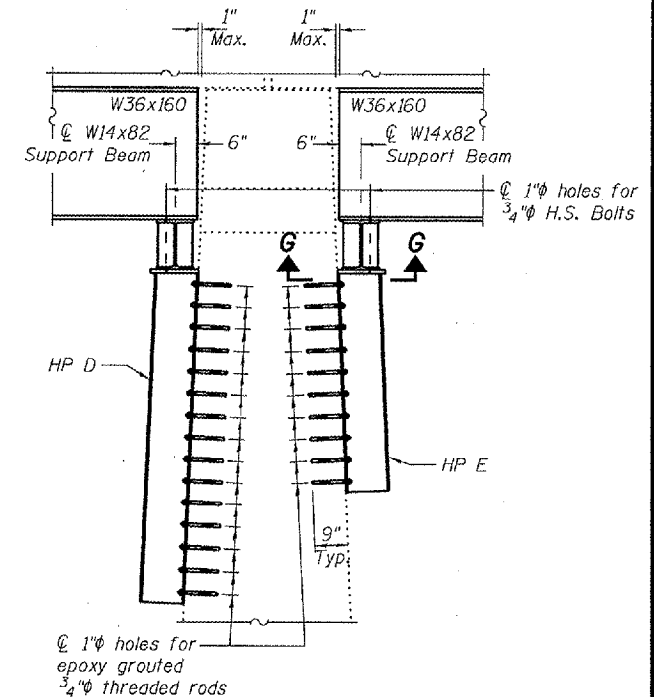
SECTION E-E



SECTION B-B



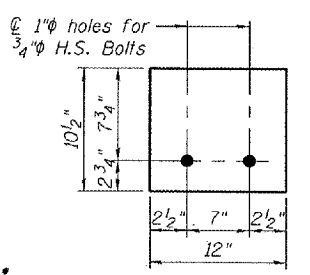
SECTION D-D



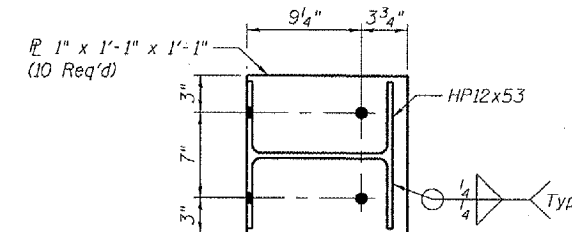
SECTION F-F

SHIM PLATE THICKNESS

Deck Beam	Span	Thickness
6	1	2 1/2"
2	2	9/16"
6	2	2 1/2"



TYPICAL SHIM



SECTION G-G

DESIGNED	A.T.H.
CHECKED	A.J.B.
DRAWN	Drew Christopher
CHECKED	A.T.H. A.J.B.

January 3, 2008
EXAMINED
PASSED
ENGINEER OF STRUCTURAL SERVICES
ENGINEER OF BRIDGES AND STRUCTURES

SUPPORT DETAILS
F.A. RT. 164
TAZEWELL COUNTY
SN 090-0062