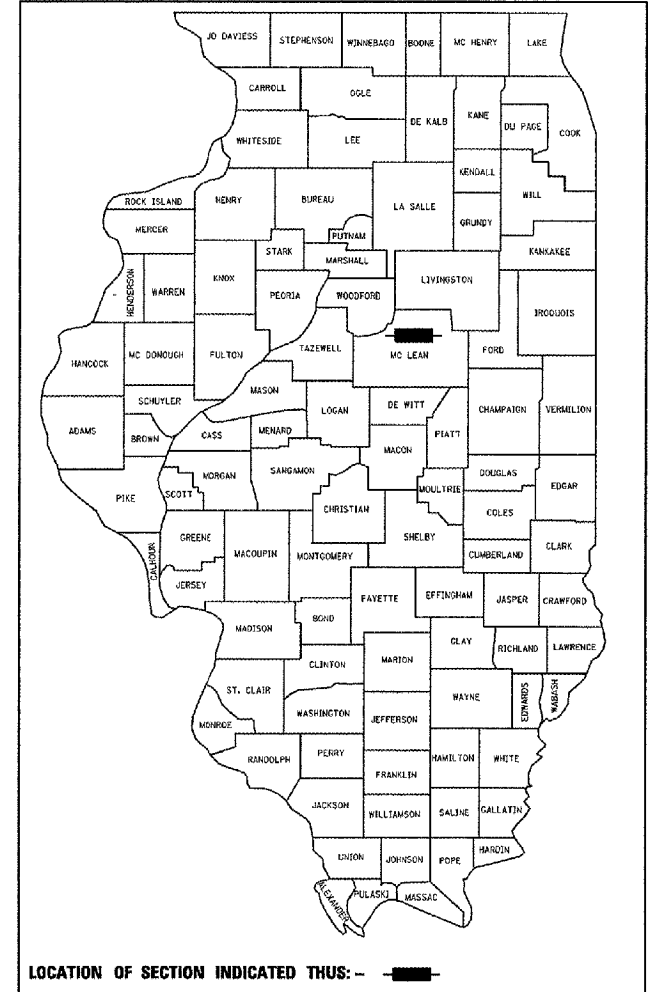


F.A.P. RTE.	SECTION	COUNTY	TOTAL SHEETS	SHEET NO.
693	(21BR-3)BR	McLEAN	23	1
FED. ROAD DIST. NO.	ILLINOIS	CONTRACT NO.	70610	

STATE OF ILLINOIS
DEPARTMENT OF TRANSPORTATION
DIVISION OF HIGHWAYS

PLANS FOR PROPOSED HIGHWAY IMPROVEMENT

D-95-124-06



ADT = 1,800 (2006); 2,100 (2016)
 %SU = 4.4 (2006)
 %MU = 4.4 (2006)
 TOWNSHIP: ARROWSMITH
 FUNCTIONAL CLASSIFICATION:
 MINOR ARTERIAL, (NON-URBAN)

INDEX OF SHEETS

1	TITLE SHEET
2	GENERAL NOTES
3	SUMMARY OF QUANTITIES
4	TYPICAL SECTIONS
5	SCHEDULE OF QUANTITIES
6	PLAN & PROFILE
7-11	ROADWAY DETAILS
12-18	STRUCTURE DETAILS
19-23	CROSS SECTIONS

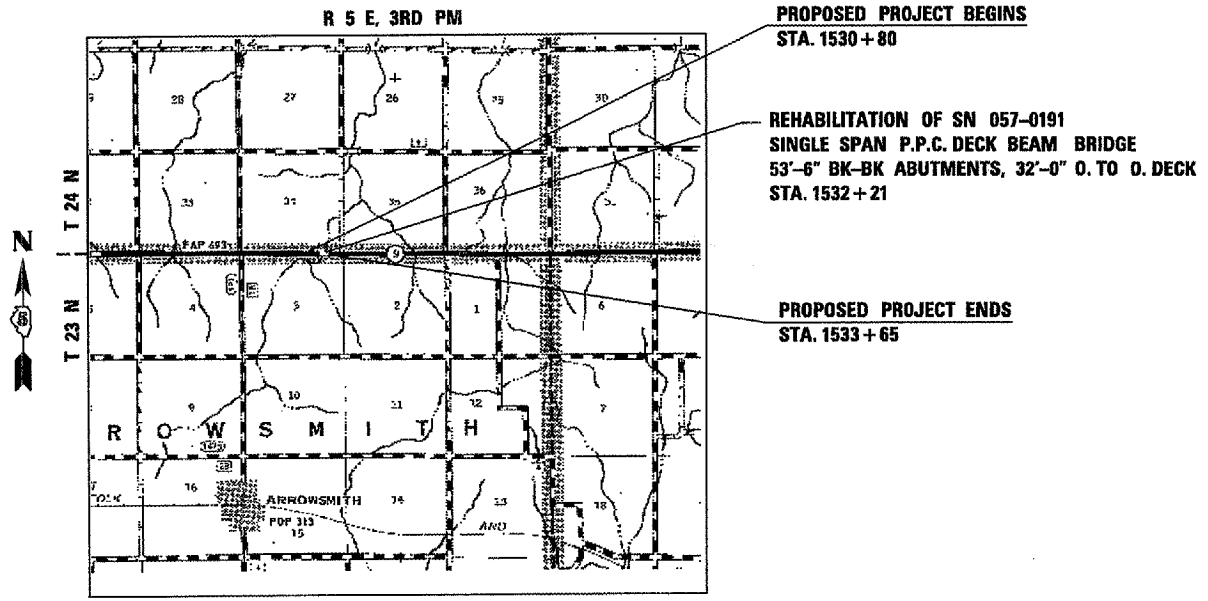
LIST OF ILLINOIS DOT HIGHWAY STANDARDS

000001-05	STANDARD SYMBOLS, ABBREVIATIONS, AND PATTERNS
001001-01	AREAS OF REINFORCEMENT BARS
001006	DECIMAL OF AN INCH AND OF A FOOT
482011-03	HMA SHOULDER STRIPS/SHOULDERS WITH RESURFACING OR WIDENING AND RESURFACING PROJECTS
515001-02	NAME PLATE FOR BRIDGES
630001-07	STEEL PLATE BEAM GUARDRAIL
631032-03	TRAFFIC BARRIER TERMINAL, TYPE 6 A
635006-02	REFLECTOR AND TERMINAL MARKER PLACEMENT
635011-01	REFLECTOR MARKER AND MOUNTING DETAILS
701001-01	OFF-ROAD OPERATIONS, 2L, 2W, MORE THAN 15' AWAY
701006-02	OFF-ROAD OPERATIONS, 2L, 2W, 15' TO 24' FROM PAVEMENT EDGE
701301-02	LANE CLOSURE, 2L, 2W, SHORT TIME OPERATIONS
701311-02	LANE CLOSURE, 2L, 2W, MOVING OPERATIONS DAY ONLY
701901	TRAFFIC CONTROL DEVICES
780001-01	TYPICAL PAVEMENT MARKINGS

F.A.P. ROUTE 693 (IL RTE 9)
SECTION (21BR-3)BR
PROJECT: ACBHF-0693 (063)

BRIDGE SUPERSTRUCTURE REPLACEMENT BRAYS CREEK 0.8 MI. E. OF ARROWSMITH RD. McLEAN COUNTY

C-95-124-06

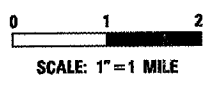


PROPOSED PROJECT BEGINS
STA. 1530+80

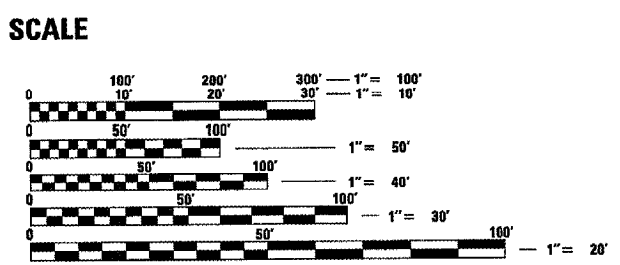
REHABILITATION OF SN 057-0191
SINGLE SPAN P.P.C. DECK BEAM BRIDGE
53'-6" BK-BK ABUTMENTS, 32'-0" O. TO O. DECK
STA. 1532+21

PROPOSED PROJECT ENDS
STA. 1533+65

LOCATION MAP



TOTAL AND NET LENGTH OF PROJECT = 285 FT. = 0.054 MI.



FULL SIZE PLANS HAVE BEEN PREPARED USING STANDARD ENGINEERING SCALES. REDUCED SIZED PLANS WILL NOT CONFORM TO STANDARD SCALES. IN MAKING MEASUREMENTS ON REDUCED PLANS, THE ABOVE SCALES MAY BE USED.

J.U.L.E.
JOINT UTILITY LOCATION INFORMATION FOR EXCAVATION
1-800-892-0123
OR 811



M. Silvester 12-12-07
MARTIN SILVESTER, P.E.
LICENSE EXP. DATE 11-30-09

STATE OF ILLINOIS
DEPARTMENT OF TRANSPORTATION
DIVISION OF HIGHWAYS

SUBMITTED *DEC 20 07*

Eric E. Harms
DEPUTY DIRECTOR OF HIGHWAYS, REGION ENGINEER
February 1, 2008
ENGINEER OF DESIGN AND ENVIRONMENT

Christine M. Reed
February 1, 2008
DIRECTOR OF HIGHWAYS, CHIEF ENGINEER

**PRINTED BY THE AUTHORITY
OF THE STATE OF ILLINOIS**

CONTRACT NO. 70610

PROJECT ENGINEER: KENSIL GARNETT
CONSULTANT LIAISON CONTACT: NANCY FASIG
CONSULTANT: THE UPCHURCH GROUP, INC.