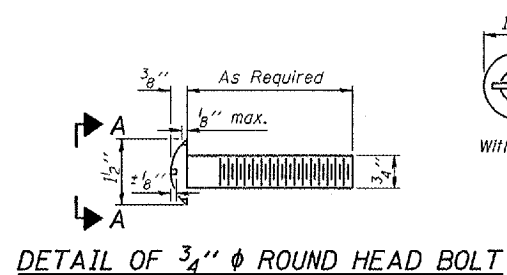
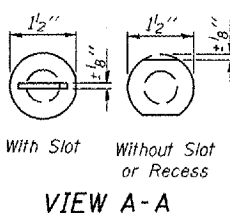


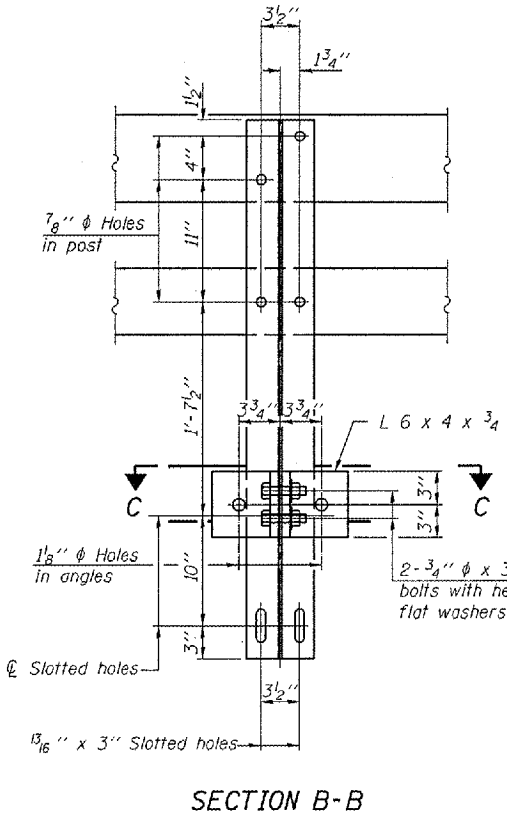
ROUTE NO.	SECTION	COUNTY	SHEETS	SHEET	SHEET NO. 5 7 SHEETS
693	(2)BR-3)BR	McLean	23	16	
FED. ROAD DIST. NO. 7	STATE	FED. AID PROJECT			



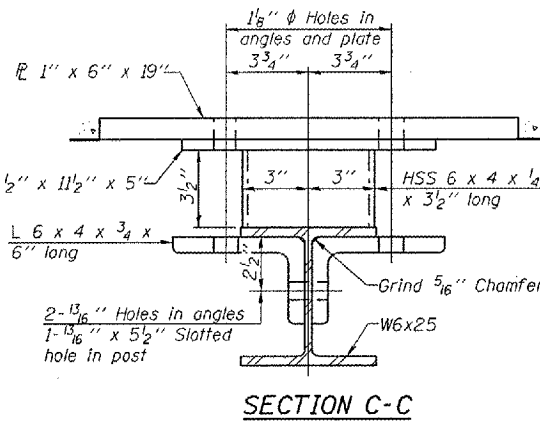
DETAIL OF 3/4"  $\phi$  ROUND HEAD BOLT



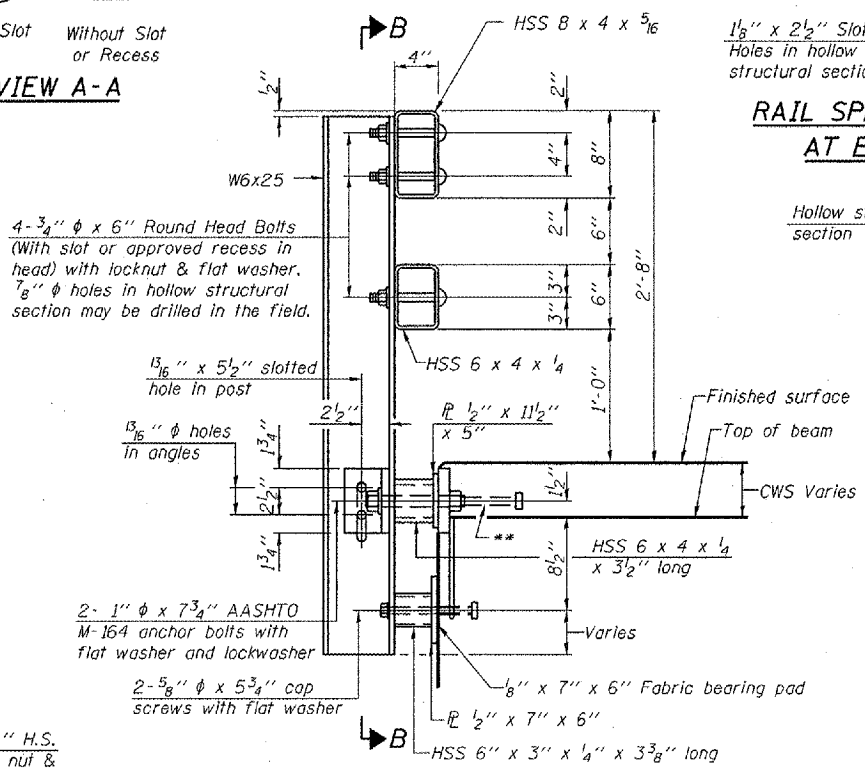
VIEW A-A



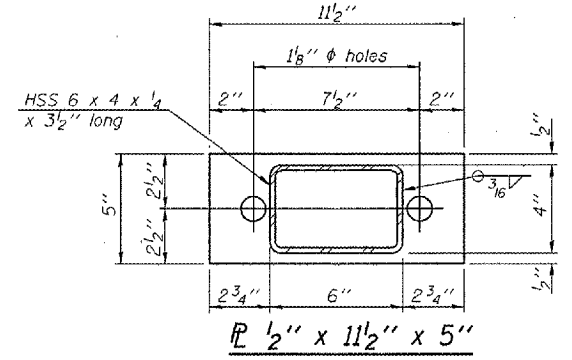
SECTION B-B



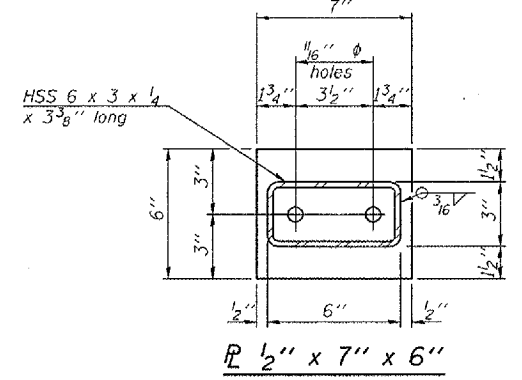
SECTION C-C



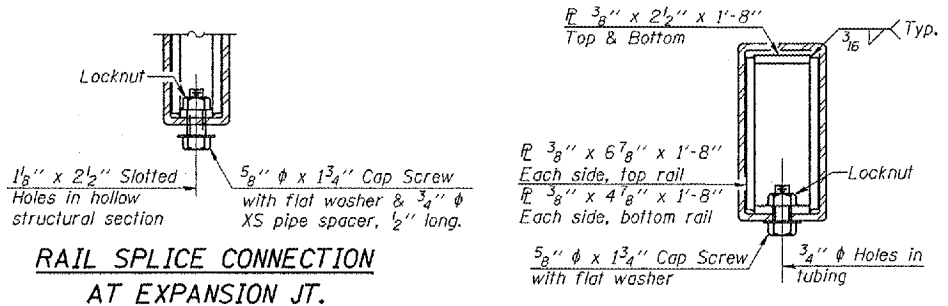
SECTION AT RAIL POST



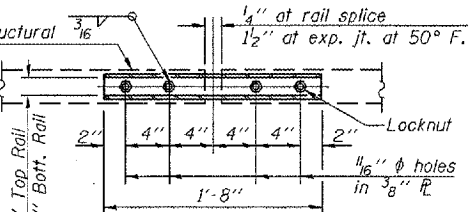
PLAN-BOTT. SPLICE P TYPICAL



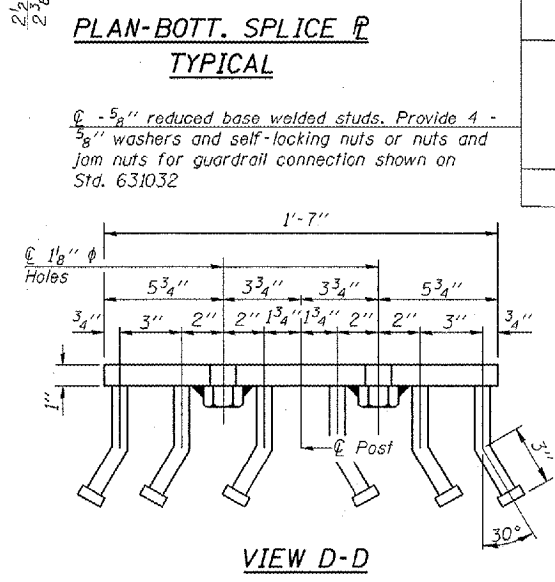
ANCHOR DEVICE



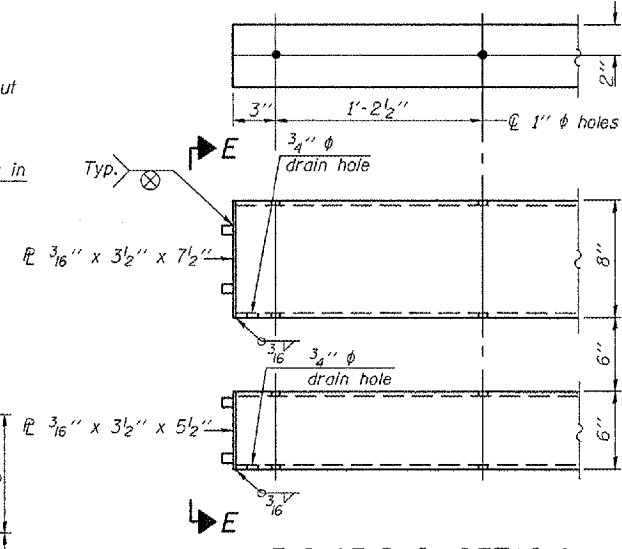
RAIL SPLICE CONNECTION AT EXPANSION JT.



SECTION AT RAIL SPLICE



VIEW D-D



END OF RAIL DETAILS

Notes:  
 All field drilled holes shall be coated with an approved zinc rich paint before erection.  
 For multi-span bridges, sufficient 1/4" x 6" x 1'-2" galvanized steel shims shall be provided to align rail between adjacent spans. Cost included with Steel Railing, Type SM.  
 Steel rail elements shall be galvanized according to Article 509.05 of the Standard Specifications.  
 \*\*The studs of the anchor devices shall be placed below the top reinforcement bars and the outermost longitudinal reinforcement bar shall be placed directly above the studs of the rail post anchor device.

BILL OF MATERIAL

Item	Unit	Quantity
Steel Railing, Type SM	Foot	104

REVISIONS	
NAME	DATE

ILLINOIS DEPARTMENT OF TRANSPORTATION  
 STEEL RAILING, TYPE SM  
 IL RTE. 9 OVER BRAYS CREEK  
 FAP 693 SECTION (2)BR-3)BR  
 McLEAN COUNTY  
 STA. 1532+21 STR. NO. 057-0191  
 SCALE: VERT. HORIZ. DATE DATE  
 DRAWN BY RMH  
 CHECKED BY MJS

\*Threaded areas shall be plugged or blocked off during casting of beam. Galvanized after fabrication.

THE PROJ. ENGINEER'S APPROVAL IS NECESSARY FOR THE PROCEEDING WITH THIS DRAWING.

R-34CWS

9-3-07

(6'-3" Maximum Post Spacing) (5" minimum to 7 1/2" maximum CWS thickness)