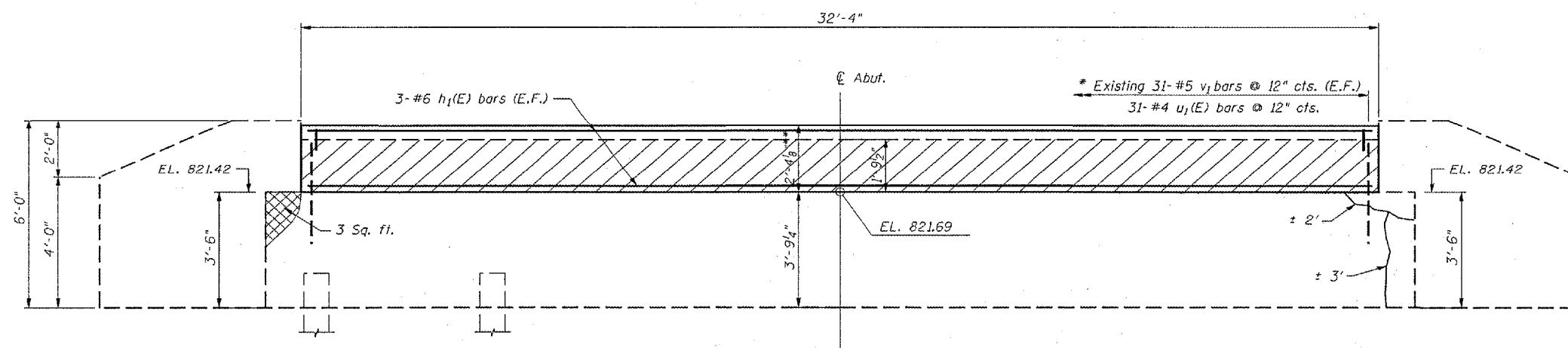
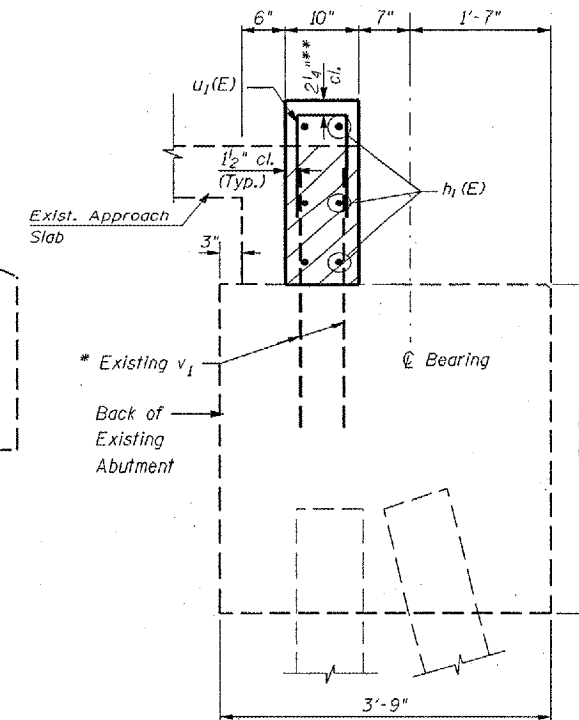


ROUTE NO.	SECTION	COUNTY	TOTAL SHEETS	SHEET NO.
693	(2)IBR- (3)BR	McLean	23	18
FED. ROAD DIST. NO. 7		ILLINOIS	FED. AID PROJECT	7 SHEETS



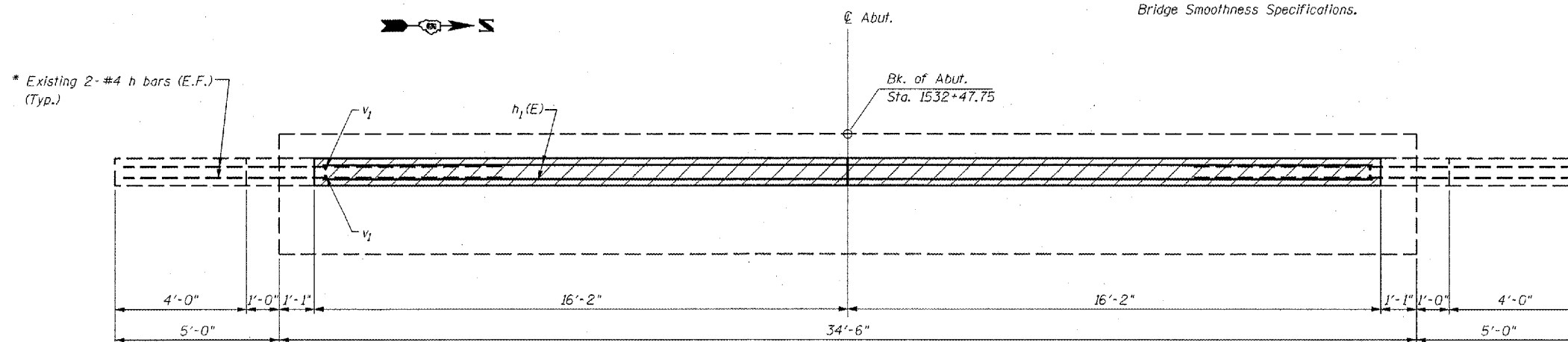
**ELEVATION**



**SECTION THRU ABUTMENT**

\* Existing Reinforcement extending into new construction shall be cleaned, straightened and incorporated into the new construction. Cost included with Concrete Removal.

\*\* Before Grinding according to Bridge Smoothness Specifications.



**PLAN**

**BILL OF MATERIAL**

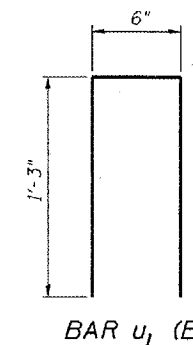
Bar	No.	Size	Length	Shape
h <sub>1</sub> (E)	6	#6	32'-0"	—
u <sub>1</sub> (E)	31	#4	3'-0"	□
Concrete Removal			Cu. Yd.	1.8
Concrete Superstructure			Cu. Yd.	2.3
Reinforcement Bars, Epoxy Coated			Pound	350
Epoxy Crack Injection			Foot	5
Structural Repair of Concrete (Depth equal to or less than 5")			Sq. Ft.	3

Note:

- Hatched areas Indicate Concrete Removal.
- Burn or cut the existing dowel rods flush with existing bearing seat. Grind the existing dowel rods smooth and seal with epoxy. The cost of this work shall be included with "Removal of Existing Superstructures"

**LEGEND**

- Structural repair of Concrete (Depth equal to or less than 5")
- Epoxy Crack Injection (Crack widths shown are approx. 1/16" to 1/8" in width)



**BAR u<sub>1</sub> (E)**

REVISIONS	
NAME	DATE

ILLINOIS DEPARTMENT OF TRANSPORTATION  
**WEST ABUTMENT**  
**IL RTE. 9 OVER BRAYS CREEK**  
**FAP 693 SECTION (2)IBR-(3)BR**  
**McLEAN COUNTY**  
**STA. 1532+21 STR. NO. 057-019I**

SCALE: VERT. \_\_\_\_\_  
 HORIZ. \_\_\_\_\_  
 DATE \_\_\_\_\_

DRAWN BY RMH  
 CHECKED BY MJS

TUG PROJ. # 1000000  
 DATE 1/27/2007 4:15 PM  
 FILE 000000